

CITY OF HILLSBORO

PARK AND TRAIL IMPROVEMENTS



TABLE OF CONTENTS

Overview.....	2
Trail Improvements.....	4
Park Improvements.....	6
Hammer & Klopfeisch Park Concept	
Northeastern Spur Trail Head Concept	
Recommendations.....	8
Implementation	12



ACKNOWLEDGEMENTS

City of Hillsboro Staff and Common Council

Mayor Gregory Kubarski
City Administrator Adam Sonntag

Alder Mark Lankey, Randy Seeley,
Darrow Novy, Mike Clark,
R. Dale Jones, Pat Moen,
Tom Hotek, Liz Parish

MSA Professional Services, Inc.

Team Leader Rob Uphoff
Planner/ Landscape Designer Sarah McDonald
Planner/Urban Designer, AICP Stephen Tremlett

OVERVIEW

INTRODUCTION

This plan provides a vision for future improvements of the Hillsboro's trail and park system, focusing on connections to, and amenities for, users of the Hillsboro State Bike Trail. More specifically, this plan provides recommendations and conceptual layouts for bicycle/pedestrian facilities from Northeastern Spur Trailhead (which is part of the Hillsboro State Bike Trail) to Field Veteran's Memorial Park, and suggests park improvements for the Hammer & Klopfeisch Park and Northeastern Spur Trail Head. Further planning, design, engineering and budgetary evaluation will be necessary prior to implementing the recommended improvements.

OVERRIDING GOAL

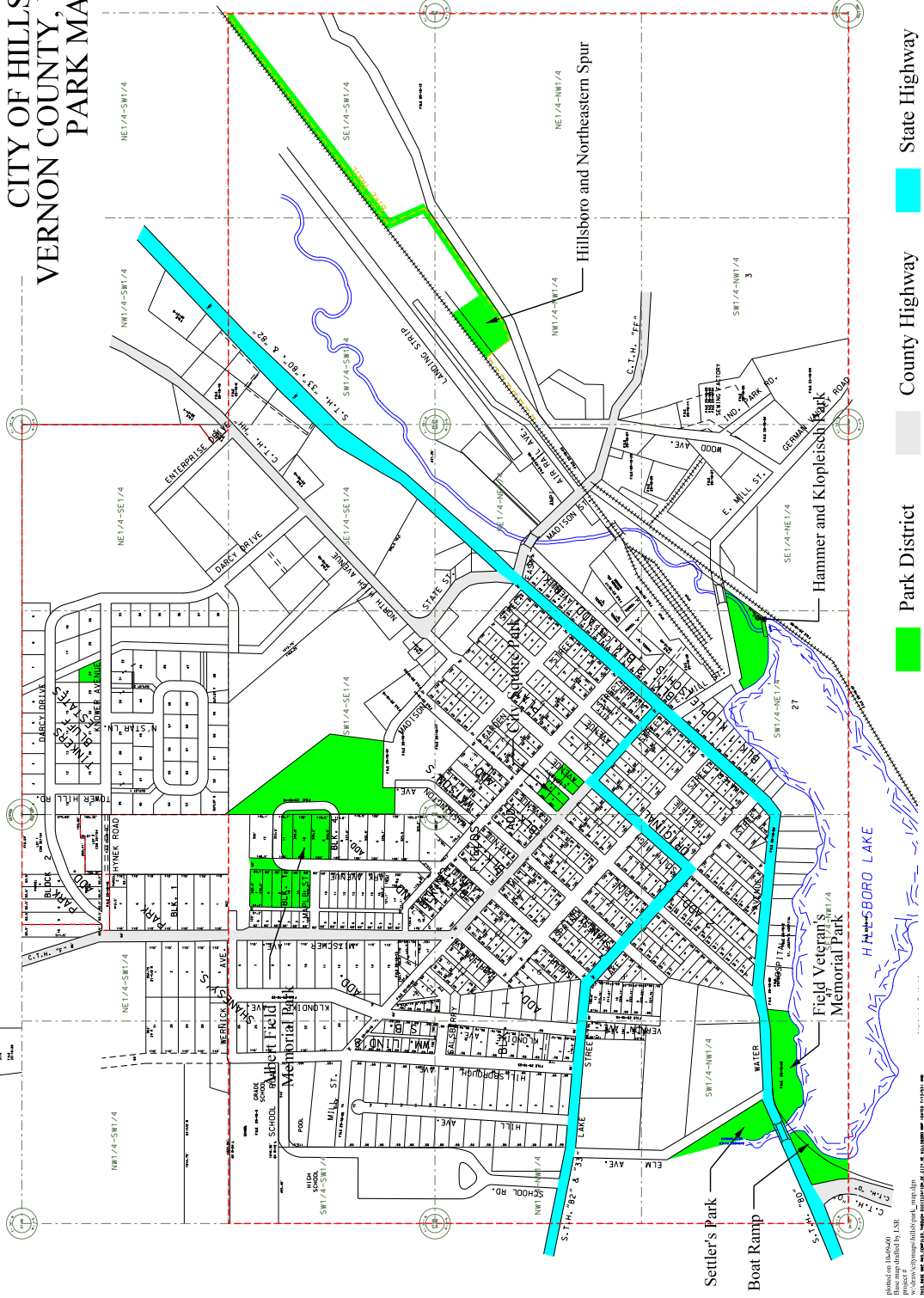
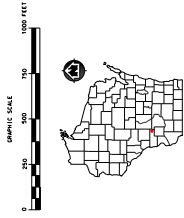
Enhance tourism related spending in Hillsboro by improving Hammer & Klopfeisch Park and connecting the regional bike path system to the existing parks and downtown.

COMMUNITY PARK PROFILE

The City of Hillsboro is located on the border of Vernon County in the heart of Wisconsin's Driftless area. As of the 2010 census 1,417 call Hillsboro home. Hillsboro currently has (6) City Parks: Settler's Park, Hammer & Klopfeisch Park, Field Veteran's Park, Hillsboro and Northeastern Spur and Albert Field Memorial Park. The *City of Hillsboro Park Map* (on the next page) provides the locations of these parks. The next column provides a description of each of the parks to be connected by this Plan's recommendations.

- ▶ **Settler's Park** is located north of Water Avenue across from Field Veteran's Park. It is largely undeveloped and is dedicated to the early settler's of Hillsboro, including the Cheyenne Valley Reserve. A historical marker on site denotes it's historical significance as the home of the African American Settlers of the Cheyenne Valley.
- ▶ **Field Veteran's Memorial Park** is located on the north west side of Hillsboro Lake, along Water Avenue. This is Hillsboro's most developed park and provides several pavilions, a gazebo a handicap-accessible pier and restroom facilities. A boat launch adjacent to the park provides recreational boating and additional fishing opportunities.
- ▶ **Hammer & Klopfeisch Park** is located on the north east side of Hillsboro Lake, along E. Mills Street (adjacent to the Hillsboro Reservoir Dam). The park consists mostly of open space with a few specimen shade trees, a pavilion and a paved fire pit. See the *Park Improvements and Recommendations* sections for planned improvements.
- ▶ **The Northeastern Spur Trailhead** is a trailhead for the Hillsboro State Trail, and is located just south of the Joshua Sanford Field Airport along Air Rail Avenue. The site consists of a paved asphalt parking area, restroom facilities, an information kiosk and some directional trail signage. See the *Park Improvements and Recommendations* sections for planned improvements.

CITY OF HILLSBORO VERNON COUNTY, WISCONSIN PARK MAP



- Park District
- County Highway
- State Highway

Printed on Recycled Paper
This map printed by NSR
© 2013 MSA
All rights reserved. No part of this publication may be reproduced without the prior written permission of MSA.

TRAIL IMPROVEMENTS

Off Road Bike Lane



Asphalt multi-use trail (off road from northeastern spur and Hammer & Klopleisch off road segment)

Bridge Crossing



Enhanced Crosswalks



Bicycle Parking



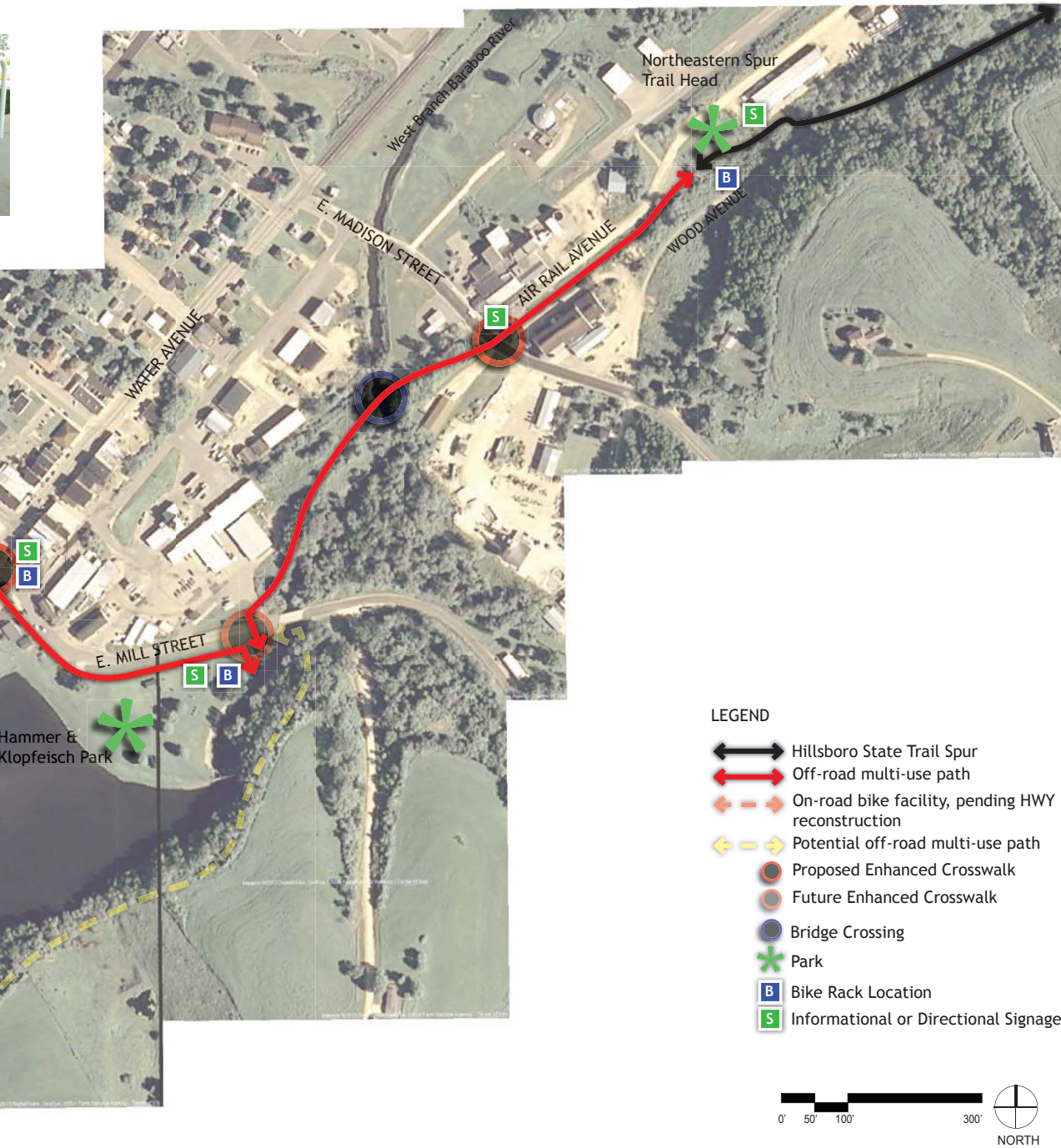
Provide racks that allow to lock up both frame and bike tires



HILLSBORO TRAIL SYSTEM

The plan above illustrates a series of existing and proposed bike/pedestrian facilities that could provide a continuous trail route from the Hillsboro State Trail to Field Veteran's Memorial Park. The proposed route was selected based on several factors, including overall safety of the route, ease of navigation and cost of construction. The design is broken down into three segments, as shown in the map above and described within.

- 1) Initially a 8-ft multi-use path would be constructed from the Northeast Spur Trailhead to Water Avenue (shown above by a solid red line). The trail would built on the south side of Air Rail Avenue (via ROW), cross E. Madison Street, continue off road adjacent to the West Branch Baraboo River, cross the river via a proposed pedestrian bridge, continue off-road adjacent the Cenex Coop, and then cross E.



Mill Street into Hammer & Klopfeisch Park. This trail would be extended north from the park to downtown along an off-road multi-use path on the south side of E. Mill Street.

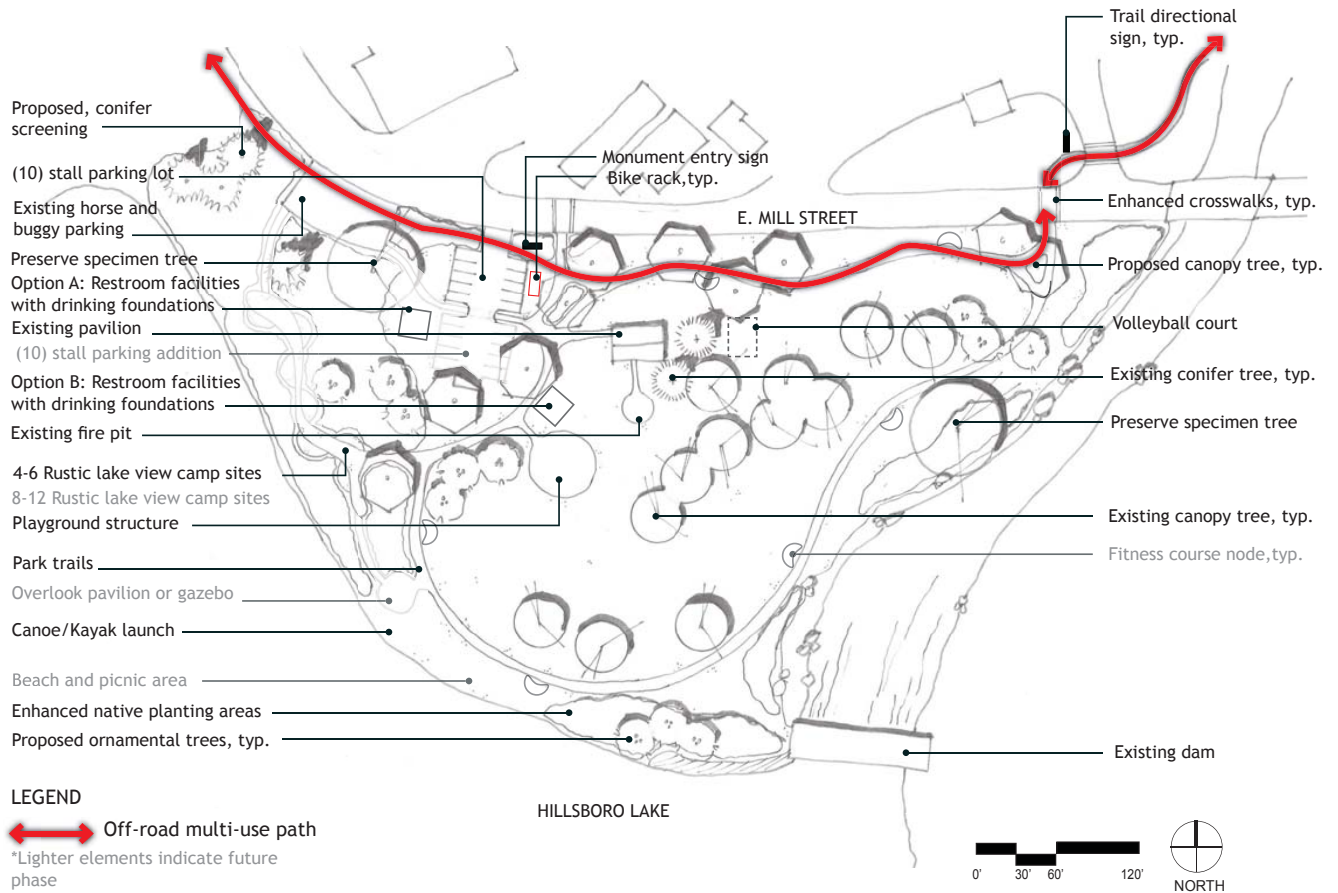
2) A marked on-road bike facility (e.g. bike lane or shared bike/parking lane) would be constructed when WIS 80 gets reconstructed. This will connect the multiuse path at Madison Ave to CTH Q and the existing boat launch

(shown above by a dashed red line).

3) Long-term an additional off-road multi-use path could be constructed along the south side of Hillsboro Lake (shown as a dashed yellow line), creating a continuous loop around the lake. However, the existing terrain could prove challenging to develop, both in terms of engineering and cost.

See the *Recommendations* section for improvement details.

PARK IMPROVEMENTS



Hammer & Klopfeisch Park Character Images



Trail directional signage



Playground



Native plantings



Fitness and stretching equipment



HAMMER & KLOPFESCH PARK

The unique site features and scenic beauty of Hammer & Klopfeisch Park lent to the development of the concept plan. The design aims to improve the overall function and quality of the park, while increasing opportunities for passive and active recreation.

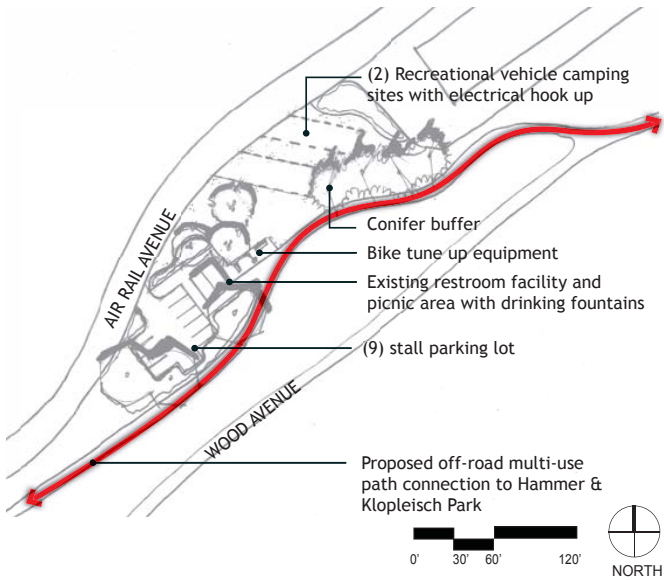
Proposed improvements to the site include:

- ▶ providing more opportunities for longer term use by providing restroom facilities and rustic camp sites;
- ▶ creating opportunities for play and exercise;
- ▶ increasing and enhancing pedestrian and bicycle circulation; and
- ▶ enhancing wildlife habitats and views.

See the *Recommendations* section for detailed information on park improvements.

NORTHEASTERN SPUR TRAIL HEAD

The trail head provides a unique opportunity to draw cyclists into the City of Hillsboro and provide them with information on where to access services and unique sites within the area.



Northwestern Spur Trail Head Character Images



Bike tune up equipment

Proposed improvements to the site include :

- ▶ reconfiguring the existing parking lot to provide for safe access to cyclists, vehicles and pedestrians;
- ▶ improving landscape aesthetic;
- ▶ providing two (2) spaces for recreational vehicle camping with electrical hooks ups; and
- ▶ adding a bike tune up station.

See the *Recommendations* section for detailed information on detailed park improvements.

RECOMMENDATIONS

The City of Hillsboro would like to see improvements to existing park facilities and expansion of the trail system to link City parks and downtown. It should be noted that some of the actions may require considerable cooperation with others, including the citizens of Hillsboro, local civic and business associations, neighboring municipalities, Vernon County, and State agencies. In nearly every case, more detailed planning, engineering, study, budgeting, and/or discussion will be necessary before acquiring land or constructing the recreational facilities.

The recommendations of this plan are divided into three major sections:

- (1) Bike/Trail facilities,
- (2) Existing Park facilities, and
- (3) Other recommendations.

Many of the specific recommendations discussed in each section are identified in the *Trail and Park Improvement Maps*. Acquisition projects will be implemented through donation, dedication, purchase, or a combination of all three. See the *Implementation* section (on page 12-13) for suggested completion timeframes and general cost ranges.

RECREATIONAL TRAILS

The *Trail Improvement and Park Improvement Maps* identify a number of potential on- and off-road bike/trail facilities. The proposed on-road bike facilities would be implemented in the future, pending the reconstruction of the highway. However, the proposed recreational off-road trails could be developed as land and funding becomes available.

ON-ROAD BICYCLE FACILITIES

The City should create a network of on-street bicycle facilities, connecting important social, civic and economic destinations within the community. *The Trail Improvements Map* proposes creating a bicycle route that would link existing and proposed City parks with the downtown and the Hillsboro State Trail. The City should consider creating additional bike routes within the community, installing signage and markings (if located on heavily traveled roadway).

1. Provide on-road bike facility on Water Avenue from E. Mill Street to CTH Q, and enhanced crosswalks at Mill Street, Elm Avenue and CTH Q.

1A. Provide bike racks and directional signage at key locations (see the *Trail Improvements Map*).

OFF-ROAD RECREATIONAL TRAILS

The *Park Improvement Map* proposes creating a number of recreational trails within the City. The proposed trails are either within the City's right-of-way, on private property (via easement), or within City parkland. Most trails are anticipated to be developed with a limestone or asphalt base; opportunities should be explored to create ADA compatible trails.

2. Extend trail from Northeastern Spur Trail head off road to Hammer & Klopfeisch Park.

2A. Obtain 20' (min.) Right of Way, placing the trail on the inside of the existing power lines. This creates a buffer for biker safety and will provide an area for landscaping. The trail would cross E. Madison and follow the abandoned rail line.

2B. Obtain easements to follow the abandoned rail line along the West Branch of the Baraboo River and pass through the south side of the Cenex Co-op property.

2C. Provide a bridge across the West Branch of the Baraboo River. Remnants of an existing railroad bridge currently remain in the location for the proposed bicycle bridge crossing, which should reduce the cost of construction.

2D. Provide 10'-12' asphalt trail, if funded, connecting the Northeastern Spur Trail Head with Hammer & Klopfeisch Park.

2F. Provide two (2) enhanced crosswalks: 1) crossing the drive for the Cenex property and 2) crossing E. Mill Street into the Hammer & Klopfeisch Park. Crosswalks should be marked and signed on both the trail and the street (warning

of up-coming road crossing).

2G. Provide 10'-12' trail along the park edge and along E. Mill Street to the intersection with Water Avenue.

2H. Provide bicycle racks and directional signage. Provide an inverted U-shaped bike racks at the intersection of Water Avenue/E. Mill Street and E. Madison/Air Rail Avenue, so users can easily access downtown. Additional bicycle racks should be installed along Water Avenue.



EXISTING PARK FACILITIES

While adding new park facilities is important to enhancing the City's park system, the City is also committed to maintaining existing parks in satisfactory condition and providing sufficient funding for operations. Such maintenance and operations include:

- Maintaining and replacing existing facilities and equipment (as needed),
- Maintaining or improving the landscape features within existing parks in good condition,
- Providing sufficient resources in support of recreational programs, and
- Maintaining a safe and accessible environment at all City parks.

At the time this plan was created, concept plans illustrating park facility recommendations were only created for Hammer & Klopfeisch Park and the Northeastern Spur Trail Head. The City should consider creating similar site plans for the remainder of their parks.

HAMMER & KLOPFESCH PARK

- 1. Install a small parking lot (approx. 20 stalls).** Parking provides order to the site and ease of access to the trail. Handicap stall(s) should be provided to allow easy access for all users.
- 2. Install 8-12 rustic camp sites.** Providing camp sites for visitors in a scenic location can provide a revenue source for park maintenance and future improvements. The sites should be designed to provide views of the lake, while still providing some privacy from E. Mill Street.
- 3. Install restroom facilities.** Restroom facilities can be a determining factor in park use and longevity of said use. Providing users with restroom and drinking facilities will allow users to stay for longer periods of time and will support a wider range of opportunities and events.
- 4. Install play structure.** Providing playground facilities will make the park a destination for families with children. When selections are made for play equipment consider not only cost but age range (5-12 years caters to the majority of children) and ADA accessibility.
- 5. Install looped trail system.** Provide designated trails to improve access, as well as physical and recreational opportunities. The trail will provide better connectivity to key elements and allows the user to be in control of their own experience. ADA compliant paths should be 5'-8' wide and should be constructed of concrete asphalt or crushed limestone or granite.
- 6. Install volleyball court.** A sand volleyball court creates opportunity to support picnicking related activities for group play. A volleyball court is an inexpensive way to provide sports on site.
- 7. Install overlook pavilion or gazebo.** Field Veteran's Memorial park has several iconic pavilion structures. Providing an overlook with a gazebo on site ties the parks together and provides further amenities and comforts to visitors.

RECOMMENDATIONS

8. **Install kayak/canoe launch.** A kayak/canoe launch provides water recreational opportunities not present on this side of the lake (a boat launch is available on the west side of the lake).
9. **Enhance native planting areas and provide more trees.** Add a diversity of native plants in key places to enhance aesthetics, reduce maintenance associated with mowing and provide habitat for wildlife. Native shade, conifer and ornamental trees should be used in association with shrubs, perennials and seed mixes.
10. **Install beach on lake and provide picnic area.** Providing a beach will allow for safe and easy access to the water for residents and visitors.
11. **Preserve existing specimen trees.** There are few mature trees on site that are in excellent quality and should be preserved if healthy.
12. **Install monument sign.** Provide an approved park sign along E. Mill at the parking lot entry.
13. **Provide bike racks.** Bike racks should be added to key locations to encourage and facilitate bicycle transportation within the park and park system. Bike racks should be located near the proposed parking lot and park trail entry points. If bike racks are not provided, users may be forced to lock up around trees and sign posts (potentially damages them). U-shaped racks are the preferred style as it allows bicyclists the ability to lock up both the tire and the frame of the bike.
14. **Add recycling and trash receptacles.** These improvements support many activities within the park and also facilitate keeping the grounds clean.
15. **Add benches in key locations.**
16. **Install fitness course along path.** Providing fitness course stations along a looped path creates a workout opportunity and encourages healthy living.
17. **Update existing horse and buggy parking with a new fence.**

NORTHEASTERN SPUR TRAIL HEAD

1. **Install improved parking lot.** The current parking lot configuration does not optimize parking and is not well defined. A new lot (as shown) will optimize the space and provide more parking. A handicap stall should be included in the design.
2. **Extend existing trail to Hammer & Klopfeisch park. (see Recreational Trails section)** This further supports the goal of connecting the state trail to Hillsboro attractions.
3. **Provide drinking fountains.** Drinking water is an amenity that campers and cyclists desire.
4. **Provide bike tune up equipment.** Providing a bike tune up station creates a unique opportunity for people traveling on the trail to take a moment to fill up their tires, adjust their seat or fix a flat.
5. **Provide picnic area with tables and recycling/trash receptacles.** These improvements support many activities within the park and also facilitate keeping the grounds clean.
6. **Provide two (2) recreational vehicle (RV) parking spots with electrical hook-ups.** Providing RV sites will allow visitors to use the trail head as a home base and experience Hillsboro parks and recreation for an extended period.
7. **Enhance landscaping.** Add a diversity of native plants in key places (around restroom, parking lot and to screen RV parking) to enhance aesthetics, reduce maintenance associated with mowing and provide habitat for wildlife. Native shade, conifer and ornamental trees should be used in association with shrubs, perennials and seed mixes.

OTHER RECOMMENDATIONS

PROMOTE AWARENESS OF LOCAL RESOURCES

Promote awareness of local parks and historical and natural resources (as well as businesses).

Steps to be considered:

1. **Install interpretive signage and historical markers.** Incorporating interpretive signage and historical markers can promote awareness of natural vegetation, geology, park founders, and other historical events.
2. **Install information kiosks at community parks.** Informational kiosks can help to promote existing City businesses and upcoming community festivals.
3. **Install bicycle and trail maps at City parks.** Where bicycle or pedestrian trails enter or exit City parks, install maps indicating the entire trail network.
4. **Ensure that local streets provide sufficient signage to direct tourists to community parks.**

BEST MANAGEMENT PRACTICES (BMPs) & SUSTAINABILITY MEASURES

Promote BMP and sustainable measures within the City's Park System. Below are some measures to be considered.

1. **Preserve or enhance wetland and floodplain areas within the City.** Wetlands and floodplains provide a natural means of filtering pollutants and controlling erosion and flooding. Ensuring their protection to the fullest extent will help protect water quality in regional waterways.
2. **Install rain gardens and other retention and filtering features in public parks.** Rain gardens function as natural stormwater retention facilities and are an inexpensive alternative for reducing runoff and pollution.
3. **Only use native plant and tree species within City parks.** Native plants are recommended because they generally do not require fertilizer, and are more tolerant of local climate, soils, and water conditions.

4. **Provide trash and recycling receptacles at all City Parks.**
5. **Replace existing light fixtures with high-efficiency LED lighting.**
6. **Install additional bike racks at all City parks.**
7. **Add outdoor public art or flower gardens to enhance local parks.**
8. **As a first resort, consider using local vendors within a 50-mile radius of Hillsboro for recreational supplies/equipment.** This action step will help to promote local economy.

(ADA) ACCESSIBILITY AUDIT

The City should conduct an Accessibility Audit of existing park facilities for compliance with the 2010 ADA Standards. The audit will identify those park facilities, buildings, and routes which are not accessible. Since the City does not employ more than 50 individuals a Transition Plan is not acquired; however, it is good practice to create one in order to guide decisions regarding a plan for corrective work.

IMPLEMENTATION

ACTION PLAN SUMMARY

This document is intended to help the City of Hillsboro implement the desired vision for the trail and park system. The Action Plan provides a guide to help the City implement this Plan's recommended projects in a tangible and timely manner. Completing the recommendations in phases will, in time, create a system with outstanding views, character, recreational opportunities and a comprehensive trail system that will allow it to become a tourist destination.

COMPLETION DATE

The estimated timeframe for completing each project can be found on the following page. The timeframes are separated into three categories (short, mid and long term) based on the following factors:

- ▶ ***Ease of implementation.*** Certain projects may require additional design and construction services.
- ▶ ***Coordination.*** Both the opportunity and need to coordinate with other park improvements.
- ▶ ***Expected cost.*** Projects with higher costs are likely to take longer to implement, as funds and/or grants become available.

Since mid- and long term projects may require detailed design work and/or permitting, the City may begin actively working toward the completion of these projects in advance of the suggested completion date.

COST ESTIMATES

The Action Plan (on the next page) also provides cost ranges for each recommendation. These costs are preliminary estimates that can aid the City during their annual budgeting process and in filling out grant applications. The final costs may be higher or lower dependent on the final design and engineering, selection of specific materials, vendors, and timing of the project. Additionally, some recommendations will require additional design services prior to implementation (e.g. electrical improvements, landscape design, and playground equipment). To reduce initial costs, certain recommendations may be modified or partially implemented.

Potential funding sources include:

- ▶ General fund
- ▶ Program/park fees
- ▶ Donations
- ▶ Tax Increment Financing
- ▶ WisDOT Community Sensitive Design Funds
- ▶ Fund-raising
- ▶ State and Federal Grants

ACTION	SHORT-TERM 2013-2015	MID-TERM 2016-2020	LONG-TERM 2020+	ESTIMATED COST*
Hammer & Klopfeisch Park				
1a Install a small asphalt parking lot (10)				\$10,000-20,000
1b Expand existing asphalt parking lot to 20 total stalls (add 10)				\$10,000-20,000
2a Install 4-6 rustic camp sites				\$10,000-15,000
2b Expand existing camp site by adding 4-6 more camp sites				\$10,000-15,000
3 Install restroom facilities with drinking fountains				\$30,000-100,000
4 Install play structure				\$30,000- \$75,000
5 Install looped asphalt trail system				\$10,000-\$20,000
6 Install volleyball court				\$2,000-4,000
7 Install overlook pavilion or gazebo				\$10,000-\$50,000
8 Install ADA kayak/canoe launch				\$14,000-25,000
9 Enhance native planting areas and provide more trees		~on going~		Varies
10 Install beach on lake and provide picnic area				\$3,000-\$6,000
11 Preserve existing specimen trees.		~on going~		\$0
12 Provide bike racks				\$500-\$1,200 (each)
13 Provide recycling and trash receptacles				\$1,000-3,000 (each)
14 Add benches in key locations				\$400- \$1,500 (each)
15 Install fitness course along path				\$500-\$3,000 per station
16 Update existing horse and buggy parking with a new fence				\$1,000-2,500
Hillsboro Northeastern Spur Trail Head				
1 Install improved parking lot				\$8,000-15,000
2 Extend trail to Hammer & Klopfeisch Park (See Trails)				
3 Provide drinking fountain(s)				\$800 each, plus water hook ups
4 Provide bike tune up equipment				\$1,500-\$2,000
5 Provide picnic area with tables and recycling/trash receptacles				\$1,000-3,000 (each)
6 Provide (2) RV parking spots with electrical hook ups				\$3,000-\$5,000
7 Enhance landscaping		~on going~		Varies
Trails				
1 Provide on road bike lanes on Water Avenue from E. Mill Street to Hwy 80				Varies
1a Provide bicycle racks				\$500-\$1,200 (each)
2 Extend trail from Northeastern Spur Trail Head, off road to Hammer & Klopfeisch Park				Varies
2a Obtain 20'+ right of way, place trail on inside of existing power lines				Varies, \$2,500 legal fees
2b Obtain an easement (or permission) to follow the abandoned rail line and to pass through the south side of the Cenex Co-op				Varies
2c Provide bridge over Baraboo River				\$130,000-160,000
2d Provide 8'-10' asphalt trail				\$42,000-\$56,000
2f Provide (2) safe crosswalks				\$1,000-2,500 (each)
2g Provide 8' asphalt trail along E. Mill Street to the intersection with Water Avenue				\$7,000-9,000
2h Provide bicycle racks				\$500-\$1,200 (each)
Signage				
1 Create a comprehensive designed, signage package				Varies
2 Add gateway/entry features at park entrances				\$10,000-\$50,000
3 Add pedestrian and bicycle trail directional signage				\$250-\$500 (each)

*Demolition, excavation and turf restoration costs not included in trail construction costs.

IMPLEMENTATION

GRANT PROGRAMS

Grant Programs are an important source of funding to offset local costs. The Wisconsin Department of Natural Resources provides a great deal of aid for park and natural resource based projects. Funding levels, deadlines, program criteria and objectives are routinely modified. Potential grant sources are listed below.

Funding Programs by Category	Maximum Award	Application Date	Granting Agency
<p>Knowles-Nelson Stewardship Program The stewardship program was established in 1989 to preserve Wisconsin's most significant land and water resources for future generations and to provide the land base and recreational facilities needed for quality outdoor experiences.</p> <p>These goals are achieved by acquiring land and easements for conservation and recreation purposes, developing and improving recreational facilities and restoring wildlife habitat.</p>	50% local match required	1-May	DNR
<p>Aids for Acquisition and Development of Local Parks (ADLP)</p> <p>Helps to buy land for easements and develop or renovate local park and recreation area facilities for nature-based outdoor recreational purposes (e.g. trails, fishing access and park support facilities.)</p>	50% local match required	1-May	DNR
<p>Urban Green Space (UGS)</p> <p>Helps to Buy land or easements in urban or urbanizing area to preserve the scenic and ecological values of natural open spaces for nature based outdoor recreation, including non-commercial gardening</p>	50% local match required	1-May	DNR
<p>Urban Rivers (UR)</p> <p>Helps to buy land on or adjacent to river flowing through urban or urbanizing areas to preserve or restore the scenic and environmental values of nature-based recreation</p>	50% local match required	1-May	DNR
<p>Recreational Trails Program Grant</p> <p>Eligible projects include: maintenance and restoration of existing trails, development and rehabilitation of trailside and trailhead facilities and trail linkages, construction of new trails and acquisitions of easements on property for trails.</p> <p>May only be used on trail which have been identified in or which furthered a specific goal of a local, county or state trail plan included on reference in a statewide comprehensive outdoor recreation plan required by the federal LAWCON.</p>	Up to 50% of the total projects costs of a recreational trail project. Payments are reimbursements on costs incurred after project approval.	1-May	DNR

Funding Programs by Category	Maximum Award	Application Date	Granting Agency
<p>Urban Forestry</p> <p>Provides technical service and financial assistance to communities for developing urban forestry programs. Priorities include:</p> <ol style="list-style-type: none"> 1) Communities needing to develop an urban forestry plan 2) Communities needing worker training and 3) Communities needing to conduct a street tree inventory. <p>Eligible projects include 1) Undertaking street tree inventories; 2) Training for Village Tree workers; 3) developing urban open space programs; 4) Developing urban forestry plans; 5) Developing a tree ordinance; 6) Developing a public awareness program; 7) Tree planting and maintenance</p>	<p>50% local match required</p> <p>Grants range from \$1,000 to \$25,000</p>	<p>1-May</p> <p>1-Oct</p>	<p>DNR</p> <p>DNR</p>
<p>Lake Protection and Classifications Grants</p> <p>Designed to assist lake users, lake communities and local governments as they undertake projects to protect and restore lakes and their ecosystems. Eligible projects include</p> <p>Purchase of property or a conservation easement Restoration of wetlands Development of local regulations or ordinances</p> <p>lake classification projects that allow counties to design and implement local land and water management programs that are tailored to specific classes of lakes in response to various development and recreational use pressures (these grants are limited to \$50,000).</p> <p>Lake protection projects recommended in a DNR-approved plan including watershed management, lake restoration, diagnostic feasibility studies, or any other projects that will protect or improve lakes.</p>	<p>25% local match required</p> <p>\$200,000 maximum per project</p>	<p>1-May</p>	<p>DNR</p>
<p>Recreational Boating Facilities Grant</p> <p>Construction of capital improvements to provide safe recreational boating facilities and for feasibility studies related to the development of safe recreational facilities.</p> <p>Also includes purchase of navigations aids, dredging of channels of waterways, and chemically treating Eurasian water milfoil.</p>	<p>50% local match required</p>	<p>Established quarterly</p>	<p>DNR</p>



MSA
PROFESSIONAL SERVICES