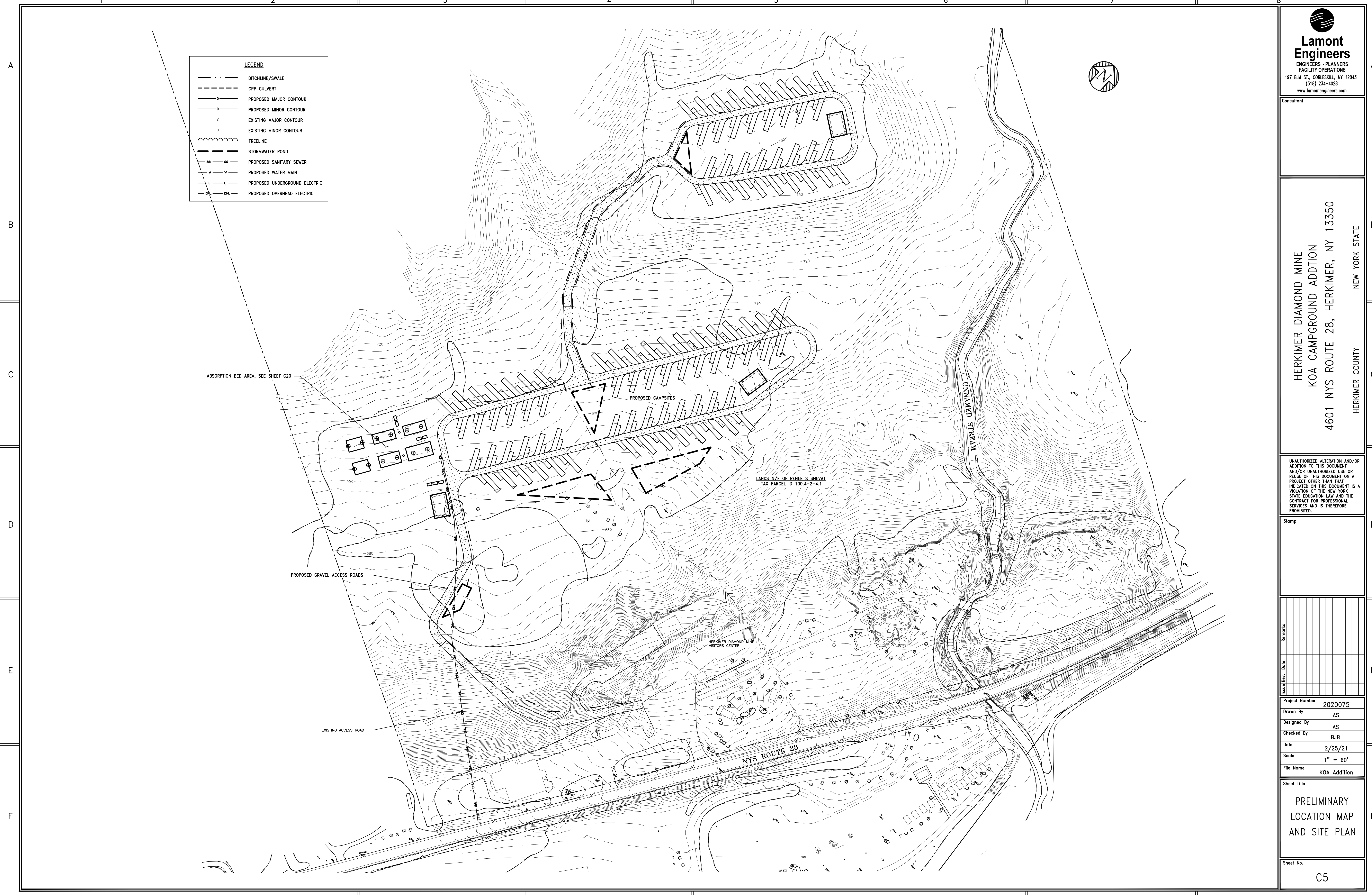


LEGEND	
- - - -	DITCHLINE/SWALE
- - - -	CPP CULVERT
—○—	PROPOSED MAJOR CONTOUR
—○—	PROPOSED MINOR CONTOUR
—○—	EXISTING MAJOR CONTOUR
—○—	EXISTING MINOR CONTOUR
~~~~~	TREELINE
=====	STORMWATER POND
—SS—	PROPOSED SANITARY SEWER
—V—V—	PROPOSED WATER MAIN
—E—E—	PROPOSED UNDERGROUND ELECTRIC
—OH—	PROPOSED OVERHEAD ELECTRIC



  
**Lamont Engineers**  
 ENGINEERS - PLANNERS  
 FACILITY OPERATIONS  
 197 ELM ST., COBLESKILL, NY 12043  
 (518) 234-4028  
 www.lamontengineers.com

Consultant

HERKIMER DIAMOND MINE  
 KOA CAMPGROUND ADDITION  
 4601 NYS ROUTE 28, HERKIMER, NY 13350  
 HERKIMER COUNTY NEW YORK STATE

UNAUTHORIZED ALTERATION AND/OR  
 ADDITION TO THIS DOCUMENT  
 AND/OR UNAUTHORIZED USE OR  
 REUSE OF THIS DOCUMENT ON A  
 PROJECT OTHER THAN THAT  
 INDICATED ON THIS DOCUMENT IS A  
 VIOLATION OF THE NEW YORK  
 STATE EDUCATION LAW AND THE  
 CONTRACT FOR PROFESSIONAL  
 SERVICES AND IS THEREFORE  
 PROHIBITED.

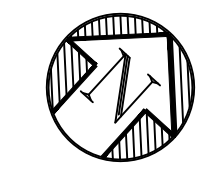
Stamp

Issue	Rev.	Date	Remarks

Project Number	2020075
Drawn By	AS
Designed By	AS
Checked By	BJB
Date	2/25/21
Scale	1" = 60'
File Name	KOA Addition

Sheet Title  
**PRELIMINARY  
 LOCATION MAP  
 AND SITE PLAN**

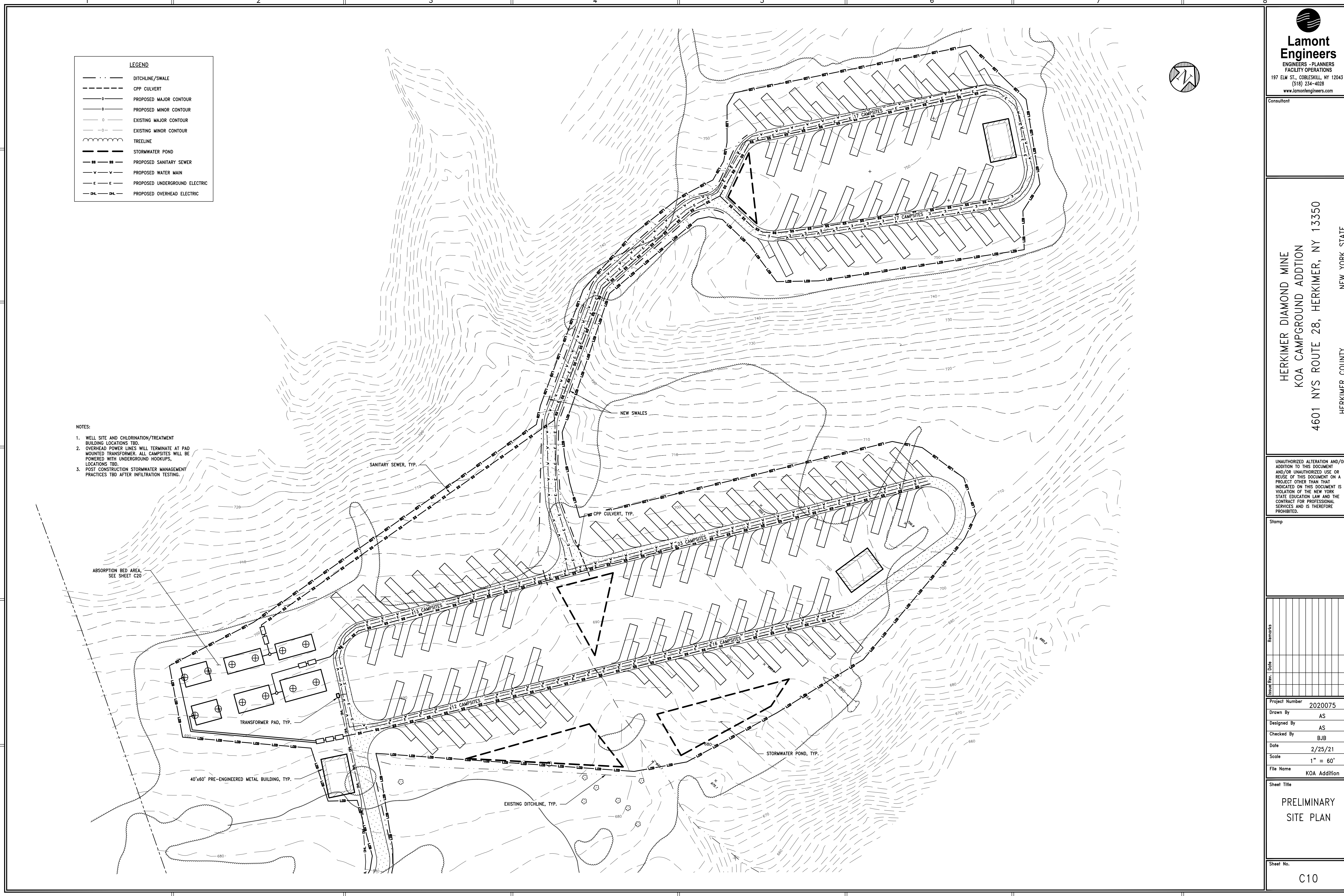
Sheet No.  
**C5**



**LEGEND**

---	DITCHLINE/SWALE
- - -	CPP CULVERT
—○—	PROPOSED MAJOR CONTOUR
—○—	PROPOSED MINOR CONTOUR
—○—	EXISTING MAJOR CONTOUR
—○—	EXISTING MINOR CONTOUR
~ ~ ~	TREELINE
—	STORMWATER POND
—SS—	PROPOSED SANITARY SEWER
—V—	PROPOSED WATER MAIN
—E—	PROPOSED UNDERGROUND ELECTRIC
—DL—	PROPOSED OVERHEAD ELECTRIC

- NOTES:**
1. WELL SITE AND CHLORINATION/TREATMENT BUILDING LOCATIONS TBD.
  2. OVERHEAD POWER LINES WILL TERMINATE AT PAD MOUNTED TRANSFORMER. ALL CAMPSITES WILL BE POWERED WITH UNDERGROUND HOOKUPS. LOCATIONS TBD.
  3. POST CONSTRUCTION STORMWATER MANAGEMENT PRACTICES TBD AFTER INFILTRATION TESTING.



**Lamont Engineers**  
 ENGINEERS - PLANNERS  
 FACILITY OPERATIONS  
 197 ELM ST., COBLESKILL, NY 12043  
 (518) 234-4028  
 www.lamontengineers.com

Consultant

HERKIMER DIAMOND MINE  
 KOA CAMPGROUND ADDITION  
 4601 NYS ROUTE 28, HERKIMER, NY 13350  
 HERKIMER COUNTY NEW YORK STATE

UNAUTHORIZED ALTERATION AND/OR ADDITION TO THIS DOCUMENT AND/OR UNAUTHORIZED USE OR REUSE OF THIS DOCUMENT ON A PROJECT OTHER THAN THAT INDICATED ON THIS DOCUMENT IS A VIOLATION OF THE NEW YORK STATE EDUCATION LAW AND THE CONTRACT FOR PROFESSIONAL SERVICES AND IS THEREFORE PROHIBITED.

Stamp

Issue Rev.	Date	Remarks

Project Number 2020075  
 Drawn By AS  
 Designed By AS  
 Checked By BJB  
 Date 2/25/21  
 Scale 1" = 60'  
 File Name KOA Addition

Sheet Title  
**PRELIMINARY SITE PLAN**

Sheet No.  
**C10**

P:\P\2020\2020075\KOA Add\DWG\C10.dwg, C:\Users\lamont\OneDrive\Documents\2020075\KOA Add\DWG\C10.dwg

Consultant

HERKIMER DIAMOND MINE  
 KOA CAMPGROUND ADDITION  
 4601 NYS ROUTE 28, HERKIMER, NY 13350  
 HERKIMER COUNTY NEW YORK STATE

UNAUTHORIZED ALTERATION AND/OR ADDITION TO THIS DOCUMENT AND/OR UNAUTHORIZED USE OR REUSE OF THIS DOCUMENT ON A PROJECT OTHER THAN THAT INDICATED ON THIS DOCUMENT IS A VIOLATION OF THE NEW YORK STATE EDUCATION LAW AND THE CONTRACT FOR PROFESSIONAL SERVICES AND IS THEREFORE PROHIBITED.

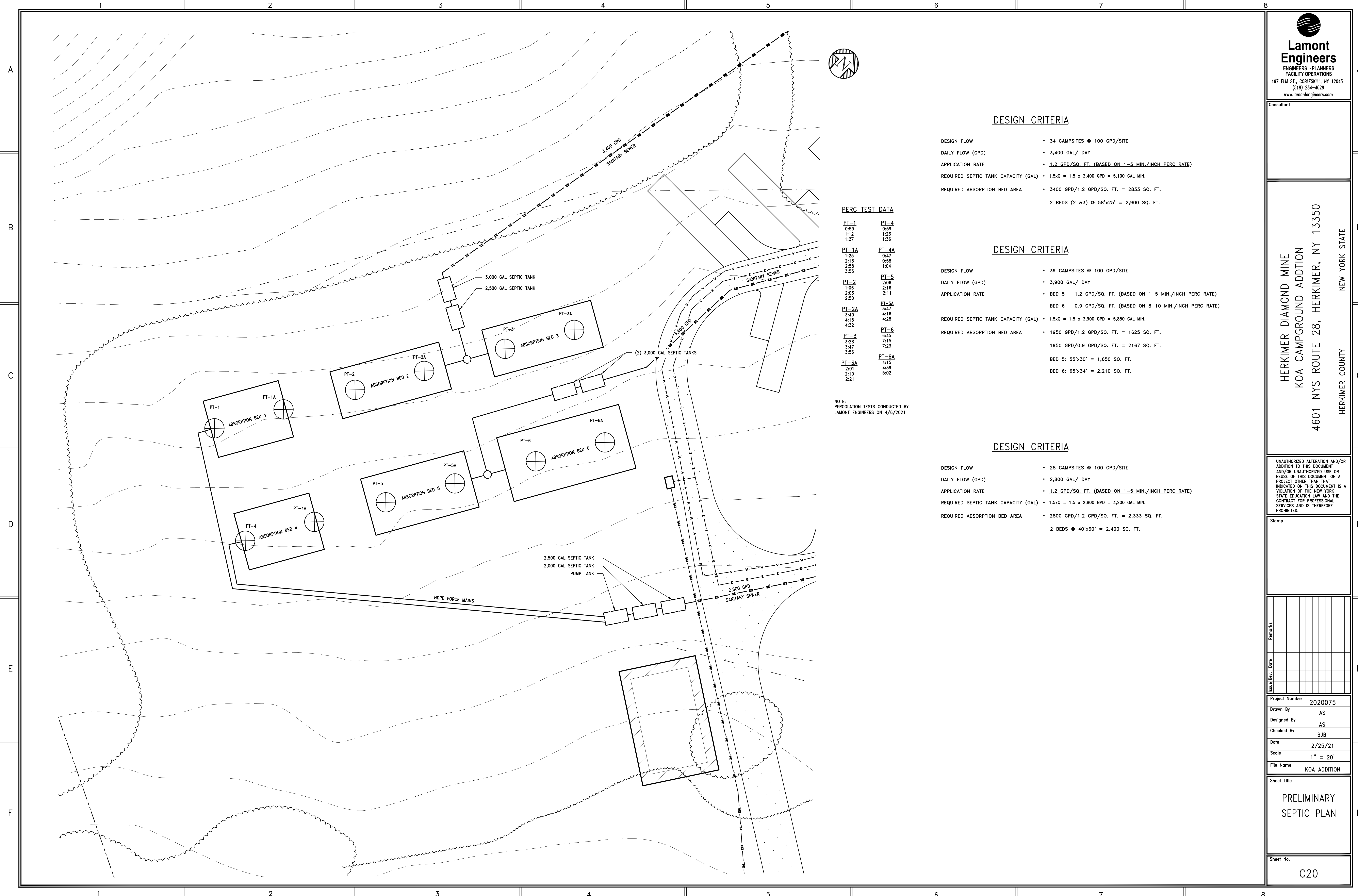
Stamp

Issue Rev.	Date	Remarks

Project Number	2020075
Drawn By	AS
Designed By	AS
Checked By	BJB
Date	2/25/21
Scale	1" = 20'
File Name	KOA ADDITION

Sheet Title  
**PRELIMINARY SEPTIC PLAN**

Sheet No.  
**C20**



**PERC TEST DATA**

PT-1 0:59 1:12 1:27	PT-4 0:59 1:23 1:36
PT-1A 1:25 2:18 2:58 3:55	PT-4A 0:47 0:58 1:04
PT-2 1:06 2:03 2:50	PT-5 2:06 2:16 2:11
PT-2A 3:40 4:15 4:32	PT-5A 3:47 4:16 4:28
PT-3 3:28 3:47 3:56	PT-6 6:45 7:15 7:23
PT-3A 2:01 2:10 2:21	PT-6A 4:15 4:39 5:02

NOTE: PERCOLATION TESTS CONDUCTED BY LAMONT ENGINEERS ON 4/6/2021

**DESIGN CRITERIA**

- DESIGN FLOW • 34 CAMPSITES @ 100 GPD/SITE
- DAILY FLOW (GPD) • 3,400 GAL/ DAY
- APPLICATION RATE • 1.2 GPD/SQ. FT. (BASED ON 1-5 MIN./INCH PERC RATE)
- REQUIRED SEPTIC TANK CAPACITY (GAL) •  $1.5 \times Q = 1.5 \times 3,400 \text{ GPD} = 5,100 \text{ GAL MIN.}$
- REQUIRED ABSORPTION BED AREA •  $3400 \text{ GPD} / 1.2 \text{ GPD/SQ. FT.} = 2833 \text{ SQ. FT.}$   
 2 BEDS (2 &3) @  $58' \times 25' = 2,900 \text{ SQ. FT.}$

**DESIGN CRITERIA**

- DESIGN FLOW • 39 CAMPSITES @ 100 GPD/SITE
- DAILY FLOW (GPD) • 3,900 GAL/ DAY
- APPLICATION RATE • BED 5 - 1.2 GPD/SQ. FT. (BASED ON 1-5 MIN./INCH PERC RATE)  
 BED 6 - 0.9 GPD/SQ. FT. (BASED ON 8-10 MIN./INCH PERC RATE)
- REQUIRED SEPTIC TANK CAPACITY (GAL) •  $1.5 \times Q = 1.5 \times 3,900 \text{ GPD} = 5,850 \text{ GAL MIN.}$
- REQUIRED ABSORPTION BED AREA •  $1950 \text{ GPD} / 1.2 \text{ GPD/SQ. FT.} = 1625 \text{ SQ. FT.}$   
 $1950 \text{ GPD} / 0.9 \text{ GPD/SQ. FT.} = 2167 \text{ SQ. FT.}$   
 BED 5:  $55' \times 30' = 1,650 \text{ SQ. FT.}$   
 BED 6:  $65' \times 34' = 2,210 \text{ SQ. FT.}$

**DESIGN CRITERIA**

- DESIGN FLOW • 28 CAMPSITES @ 100 GPD/SITE
- DAILY FLOW (GPD) • 2,800 GAL/ DAY
- APPLICATION RATE • 1.2 GPD/SQ. FT. (BASED ON 1-5 MIN./INCH PERC RATE)
- REQUIRED SEPTIC TANK CAPACITY (GAL) •  $1.5 \times Q = 1.5 \times 2,800 \text{ GPD} = 4,200 \text{ GAL MIN.}$
- REQUIRED ABSORPTION BED AREA •  $2800 \text{ GPD} / 1.2 \text{ GPD/SQ. FT.} = 2,333 \text{ SQ. FT.}$   
 2 BEDS @  $40' \times 30' = 2,400 \text{ SQ. FT.}$