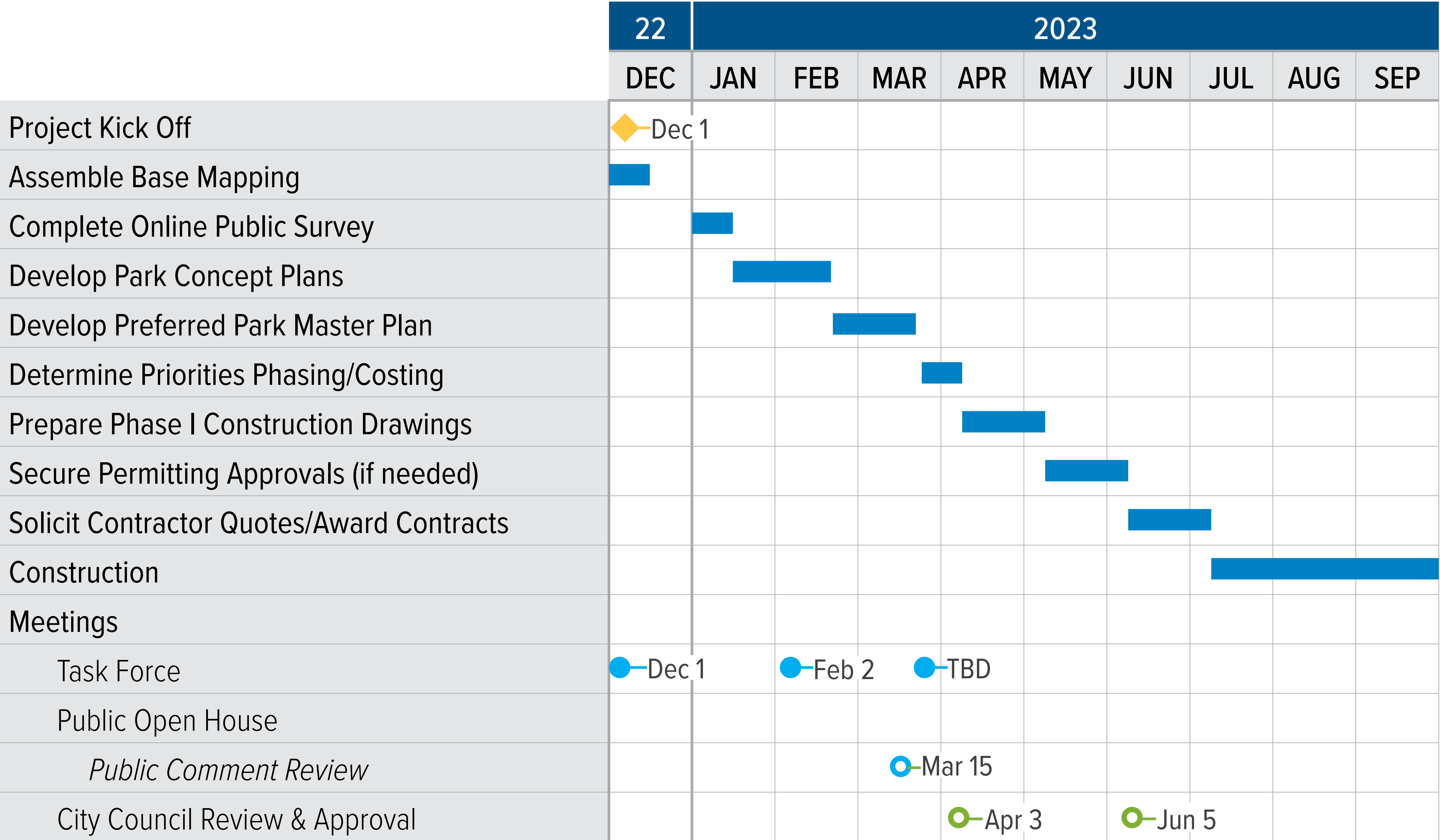


PROJECT PURPOSE

The City of Medicine Lake is undertaking this master planning effort for Jevne Park to guide short- and long- term improvements over the next ten years. Outcomes of this master planning process will help determine priorities and funding needs for improvements to ensure the park will continue to meet the recreational needs of the community. Recommendations will also be developed for improving the quality and integration of natural resources in the park to make it a more sustainable public land resource for the City and its residents.

PROJECT SCHEDULE



PROJECT OVERVIEW



WE WANT TO HEAR FROM YOU!

What do you like about this concept? Comment on sticky note and place on plan.

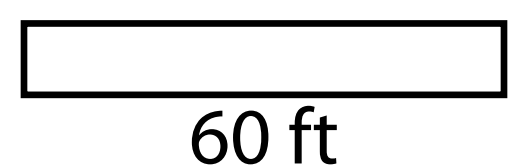
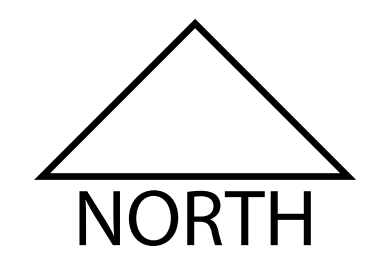


- Concept A Highlights**
- ❶ Centrally Located Picnic Pavilion
 - ❷ Centrally Located Play Areas
 - ❸ New Pickle Ball Court Adjacent to Existing Tennis Court
 - ❹ New Half-Court Basketball Adjacent to Sand Beach Volleyball
 - ❺ New Shoot Around 8' High Hoop (for younger kids)
 - ❻ Trail Circulation Through Middle of Park
 - ❼ 180' of Boardwalk Trail Through Wetland Complex
 - ❽ Pull in Parking Spaces
 - ❾ Perennial Garden Planting Area Adjacent to Picnic Shelter
 - ❿ Restored Wetland and Habitat Area

CONCEPT A

Jevne Park Master Plan - City of Medicine Lake

March 15, 2023



WE WANT TO HEAR FROM YOU!

What do you like about this concept? Comment on sticky note and place on plan.



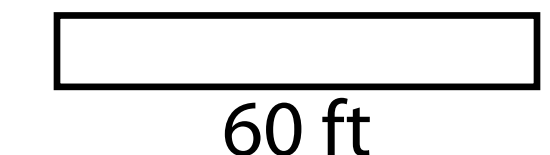
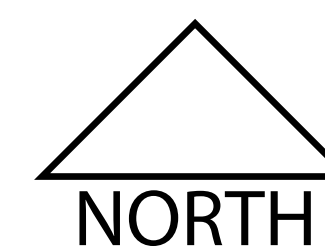
Concept B Highlights

- 1 Centrally Located Picnic Pavilion
- 2 Play Areas Located along SW Corner of Park
- 3 Existing Half-Court Basketball to Remain
- 4 Existing Tennis and Pickleball Court to Remain
- 5 Perennial Garden and Soft Surface Strolling Path Adjacent to Future Mitigation Area
- 6 Native Vegetation Buffer Along Perimeter Edge of Park
- 7 Internal Trail Loop Circulation
- 8 140' of Boardwalk Crossing Through Wetland Complex
- 9 Pull In Parking Spaces
- 10 Restored Wetland and Habitat Area

CONCEPT B

Jevne Park Master Plan - City of Medicine Lake

March 15, 2023



WE WANT TO HEAR FROM YOU!

What do you like about this concept? Comment on sticky note and place on plan.



- Perennial Flower Entry Feature with Public Art
- 30'-0" Picnic Pavilion
- Attached Patio Space
- Natural Play Feature
- Play Containers (Play Equipment TBD)

- Pull In Parking
- 6'-0" Wide Trail Circulation
- Existing Concrete Pad

- New Full Court Basketball
- Parallel Parking
- New Pickleball Courts

- Existing Pull In Parking
- Existing Sand Volleyball Court
- Native Vegetation Buffer
- Restore Wetland and Habitat Complex

- Multi-Purpose Community Gathering Open Lawn Space
- Maintain Drainage Way to Wetland Complex

- Native Vegetation Buffer
- Boardwalk Crossing

Park Entrance Sign Feature


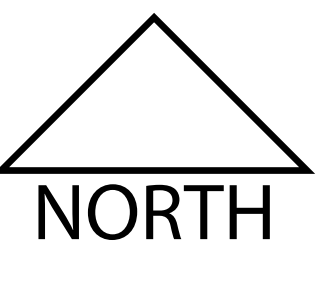
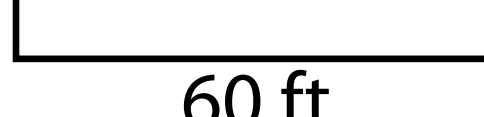
Concept C Highlights

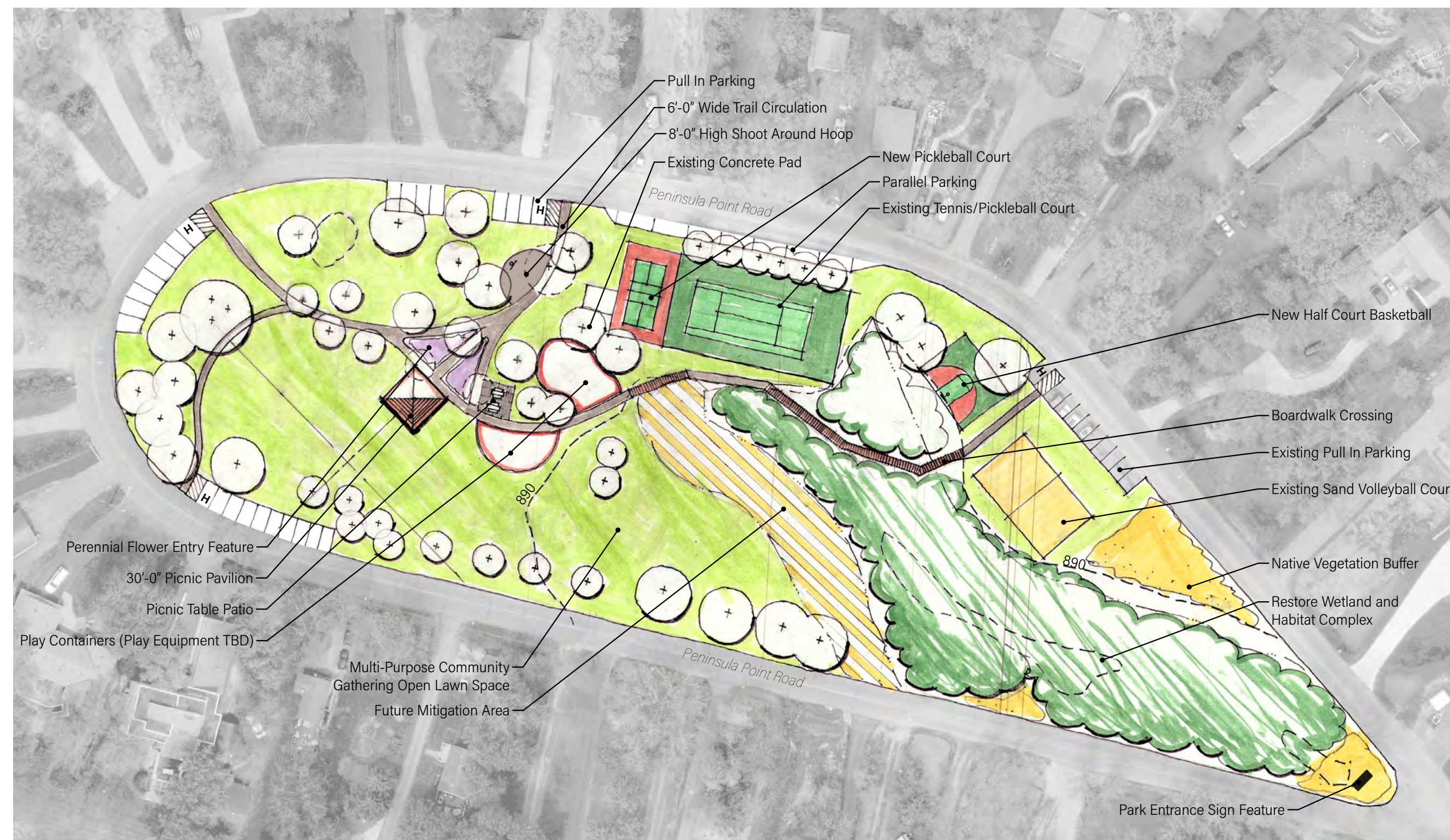
- 1 Centrally Located Pavilion Shelter
- 2 Patio Space Adjacent With Pavilion Shelter
- 3 Play Areas Located on West Edge of Park Property
- 4 New Full Court Basketball
- 5 Two Pickleball Courts
- 6 Trail Circulation Through Middle of Park
- 7 250' of Boardwalk Crossing Through Wetland Complex
- 8 Perennial Planting Feature at Trail Intersection
- 9 Pull In Parking Spaces
- 10 Restored Wetland and Habitat Complex

CONCEPT C

Jevne Park Master Plan - City of Medicine Lake

March 15, 2023

SRF   



CONCEPT A



CONCEPT B



CONCEPT C

PARK AMENITY SITE LOCATION SURVEY

Each park concept locates park amenities in different locations. What location of each park amenity do you like best? Place one dot per park amenity.

PARK AMENITY	CONCEPT A	CONCEPT B	CONCEPT C
PICNIC PAVILION			
PLAYGROUND			
COURT LAYOUT			
TRAIL CIRCULATION			
MULTI-PURPOSE OPEN LAWN SPACE			
NATIVE VEGETATION			
PERENNIAL PLANTING FEATURE			

PARK AMENITY PRIORITY SURVEY

Place numbered dot next to your top three park amenities you would like to see implemented in the park.

PARK AMENITY	PARK AMENITY PRIORITY
PICNIC PAVILION	
PLAYGROUND	
FULL COURT BASKETBALL	
HALF COURT BASKETBALL	
PICKLEBALL COURT	
TENNIS COURT	
COMBINED TENNIS & PICKLEBALL COURT	
TRAIL CIRCULATION	
MULTI-PURPOSE OPEN LAWN SPACE	
NATIVE VEGETATION	
PERENNIAL PLANTING FEATURE	

PARK AMENITY LOCATION AND PRIORITY SURVEY

POTENTIAL PARK AMENITY CHARACTER SURVEY

Place dot on park amenity precedent image you like best. Place a maximum of 3 dots.



Community Fire Pit



Nature-Based Public Art



Corn Hole



Intersecting Gable Roof



Clerestory Hip Roof



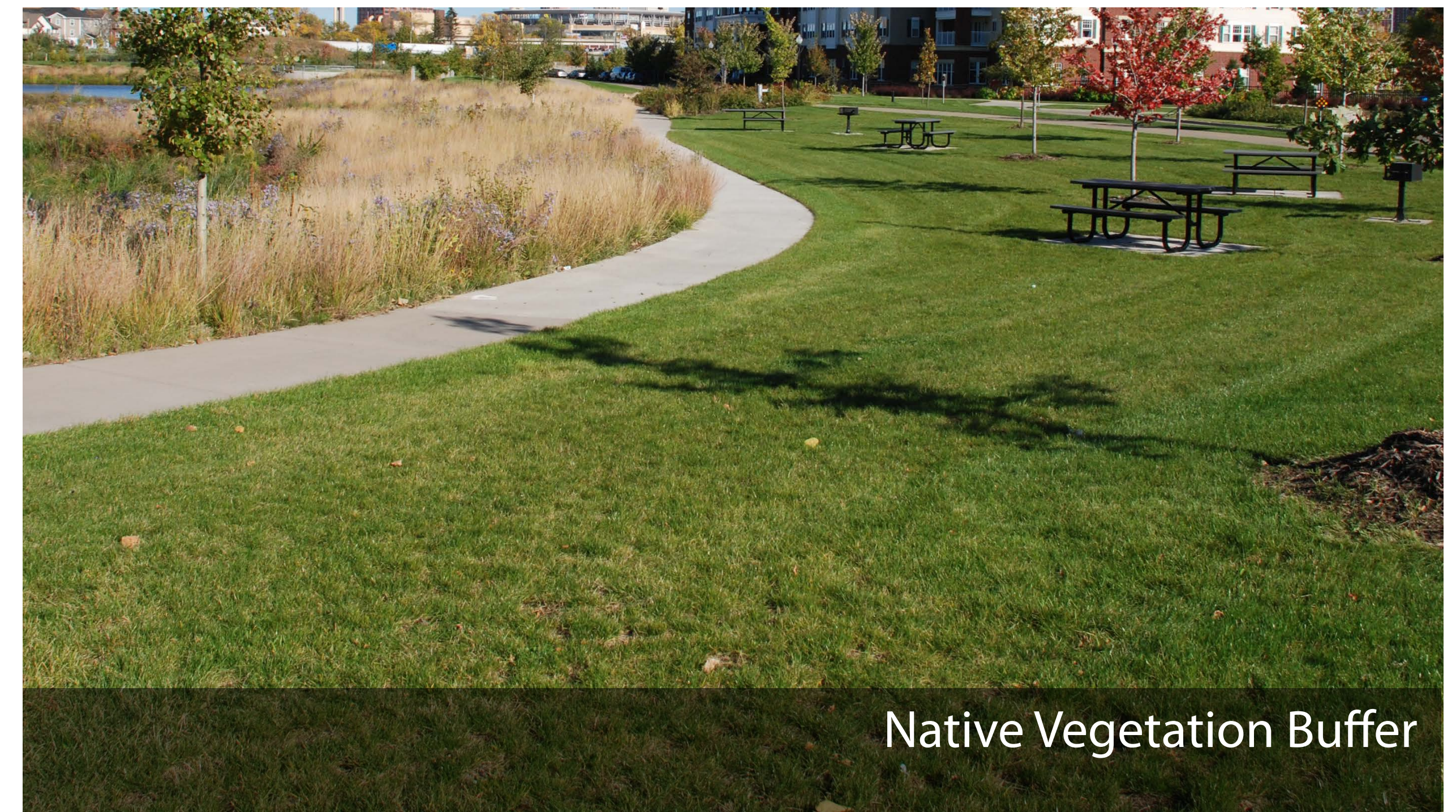
Shelter with Grill



Wetland Boardwalk



Perennial Gardens



Native Vegetation Buffer

PRECEDENT IMAGERY

Jevne Park Master Plan - City of Medicine Lake

March 15, 2023



POTENTIAL PLAYGROUND CHARACTER SURVEY

Place dot on playground precedent image you like best. Place a maximum of 3 dots.



Nature-Based Play Structure



Nature-Based Play Structures



Mini Tower Play Structure



Saucer Swing



Natural Play Climbing Structure



Sand Play



Net Climbing



Hammocks



Bolder Scrambles

PRECEDENT IMAGERY

Jevne Park Master Plan - City of Medicine Lake

March 15, 2023

