



# City of Medicine Lake

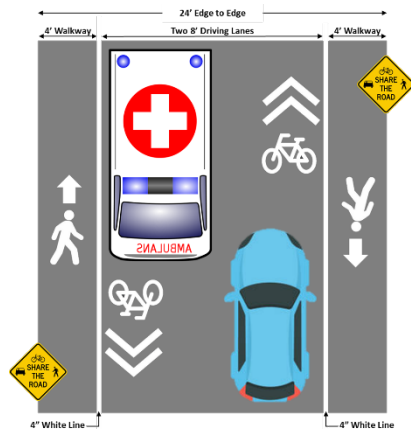
10609 South Shore Drive • Medicine Lake, Minnesota 55441 • (763)542-9701

Hello neighbors!

Medicine Lake is a very special place, and our streets are a key aspect of our neighborly vibe. Our streets are where we wave hello as we drive by; stop to chat as we go for a walk; and our children ride their bikes to the park. But, with only 24 feet in width, no sidewalks, and hundreds of people in motion every day, our streets are busy - and sometimes dangerous.

## Share The Road

At most city council meetings, we hear stories of a person nearly struck by a vehicle, a careless driver going way too fast, or a parked vehicle blocking traffic. The concept of “Share the Road” is more than a street sign, it’s a key imperative for our city. We must make changes that will improve the safety of our streets for everyone – motorists, bicyclists, and pedestrians.



## Complete Streets are for everyone...

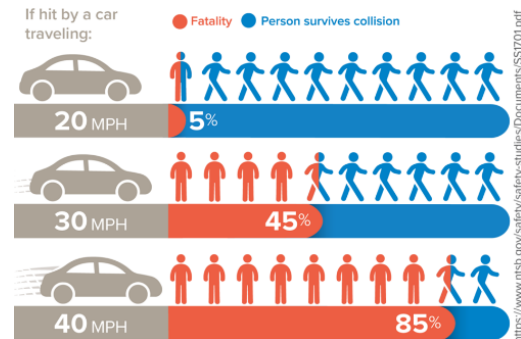
With road construction being at least a year away, we will utilize this pre-construction period to implement changes this May. We are using Complete Street concepts, which is an approach to planning, designing, building, operating, and maintaining streets that enables safe access for all pedestrians, bicyclists, and motorists.

We will have 4-foot dedicated walkways on both sides of the road. This provides for two 8-foot-wide driving lanes, which will safely accommodate two oncoming vehicles traveling at slow speeds. In situations where motorists need more room, they will carefully encroach on the pedestrian walkway.

Please review the opposite side of this letter for more details.

## Please drive 20 MPH...

Our 20 MPH speed limit is an essential aspect of street safety. We must hold ourselves accountable for driving slowly to keep our streets safe for everyone. We’ve also asked our County Sheriff to increase their enforcement of our 20 MPH law. This is all about safety. A study by the National Traffic Safety Board indicates that when a pedestrian is hit by a car, the fatality rate is 5% at 20 MPH, 45% at 30MPH, and a devastating 85% at 40 MPH.



This new Complete Street plan has been fine-tuned over several years, dozens of meetings, and many hours of careful consideration. I’m grateful to so many people in our city and our team of talented engineers for their excellent work in creating this plan. I’m also grateful to our citizens for embracing change and supporting the safety efforts that are guiding this new street design. Please be a source of positivity as we all work together to increase the safety and accessibility of our city for everyone.

Kindest regards,

Chris Heim  
Mayor, City of Medicine Lake

# MEDICINE LAKE CITY-WIDE TRAFFIC IMPROVEMENTS

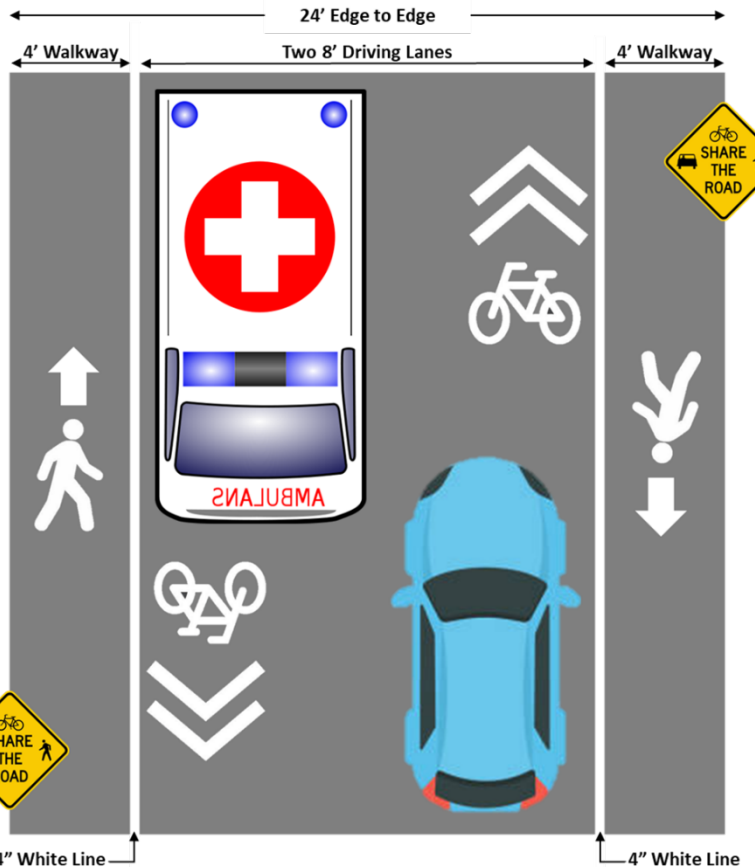
## WHAT TO EXPECT

Two 8-foot-wide driving lanes and two 4-foot-wide walkways. The striping and signage changes will begin in early May and will take approximately three consecutive days to complete.

New features will include:

- Removal of the yellow center stripe
- Striping for 4-foot-wide walking area
- Pedestrian symbols and walking-direction arrows
- Bicycle symbols and biking-direction arrows
- Crosswalk markings at intersections
- New signs throughout the city
- Pylons for Gateway Entrance (see below)

**Note: New street signs will be reused when the new roads are constructed in the future**



### PLEASE DRIVE 20 MPH

In addition to the striping and signage changes, the city has requested that the County Sheriff provide additional speed enforcement to help eliminate excessive speeding.



### SHARE THE ROAD SIGNS

These new signs confirm bicyclists should use the driving lane and remind motorists that biking is permissible in the driving area of the street. Signs will be placed at the entrance of Peninsula Road and at various points in the city.



### STREET MARKINGS

- Pedestrian: 4-foot-wide walkway with arrow indicating to walk toward oncoming traffic.
- Bicycle: Bicyclists share the road with motorists and travel in the same direction.
- Crosswalk: Road and bike path intersections for pedestrians to walk

### GATEWAY ENTRANCE/NECK DOWN

When the new road is constructed, a colored concrete median will provide a decorative visual cue to slow traffic at the entrance of the city.

For the current striping and signage project, small pylons will be anchored into the street to visually identify this future median. This will help the city observe the benefits of this new feature before road construction.

