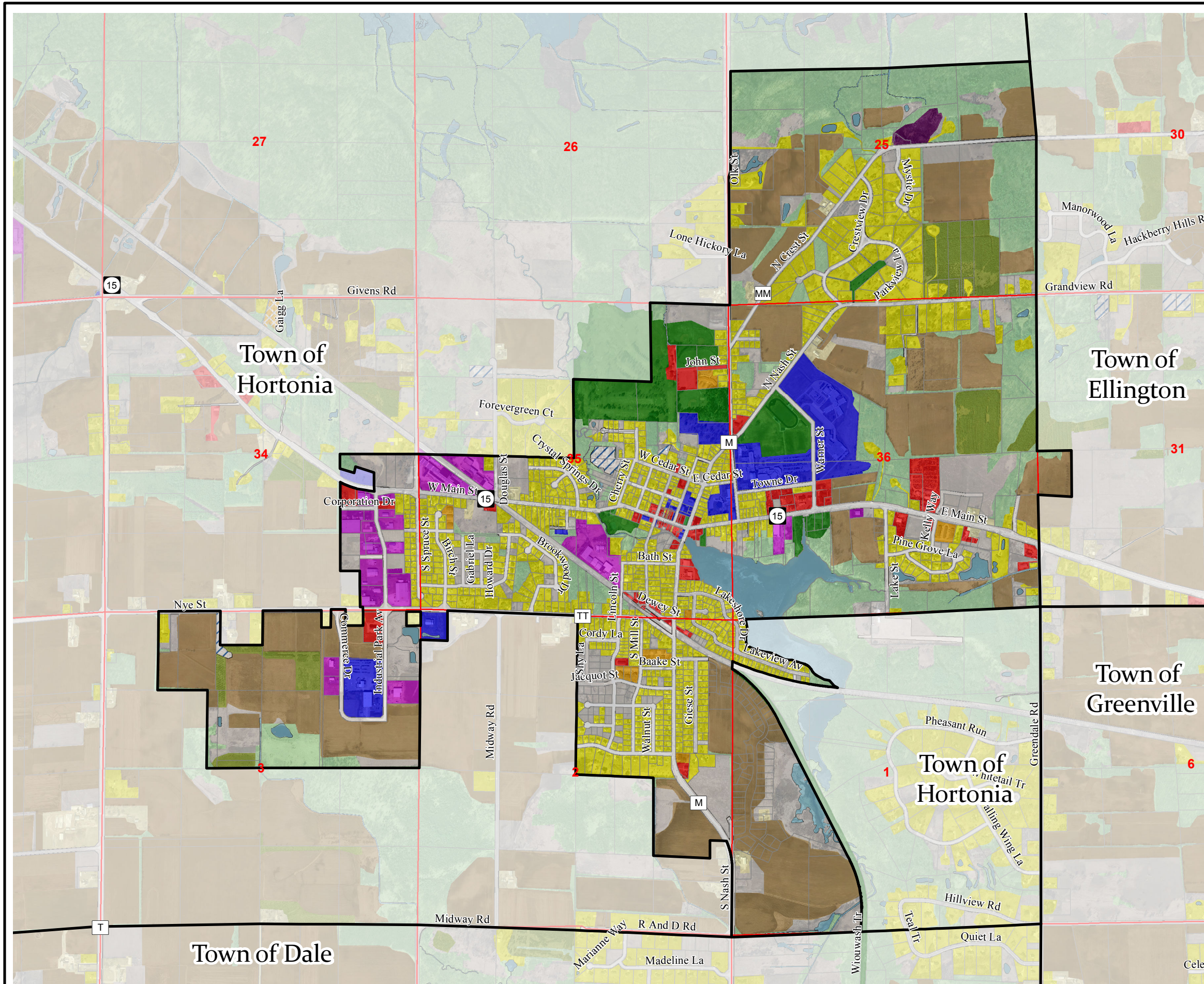
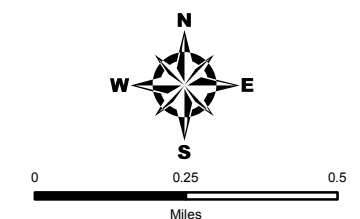


Exhibit 5-1 Village of Hortonville 2010 Existing Land Use



- Municipal Boundary
- Single Family Residential
- Farmsteads
- Multi-Family
- Mobile Home Parks
- Commercial
- Industrial
- Quarries
- Institutional Facilities
- Transportation
- Utilities/Communications
- Non-Irrigated Cropland
- Recreational Facilities
- Planted Woodlands
- General Woodlands
- Open Other Land
- Water
- PLSS Sections



Source:
Land Use Created by ECWRPC 2003, Updated 2013
Digital Data provided by Outagamie County 2010

This data was created for use by the East Central Wisconsin Regional Planning Commission Geographic Information System. Any other use/application of this information is the responsibility of the user and such use/application is at their own risk. East Central Wisconsin Regional Planning Commission disclaims all liability regarding fitness of the information for any use other than for East Central Wisconsin Regional Planning Commission business.

Prepared By
EAST CENTRAL WISCONSIN
REGIONAL PLANNING COMMISSION
APRIL 17, 2014