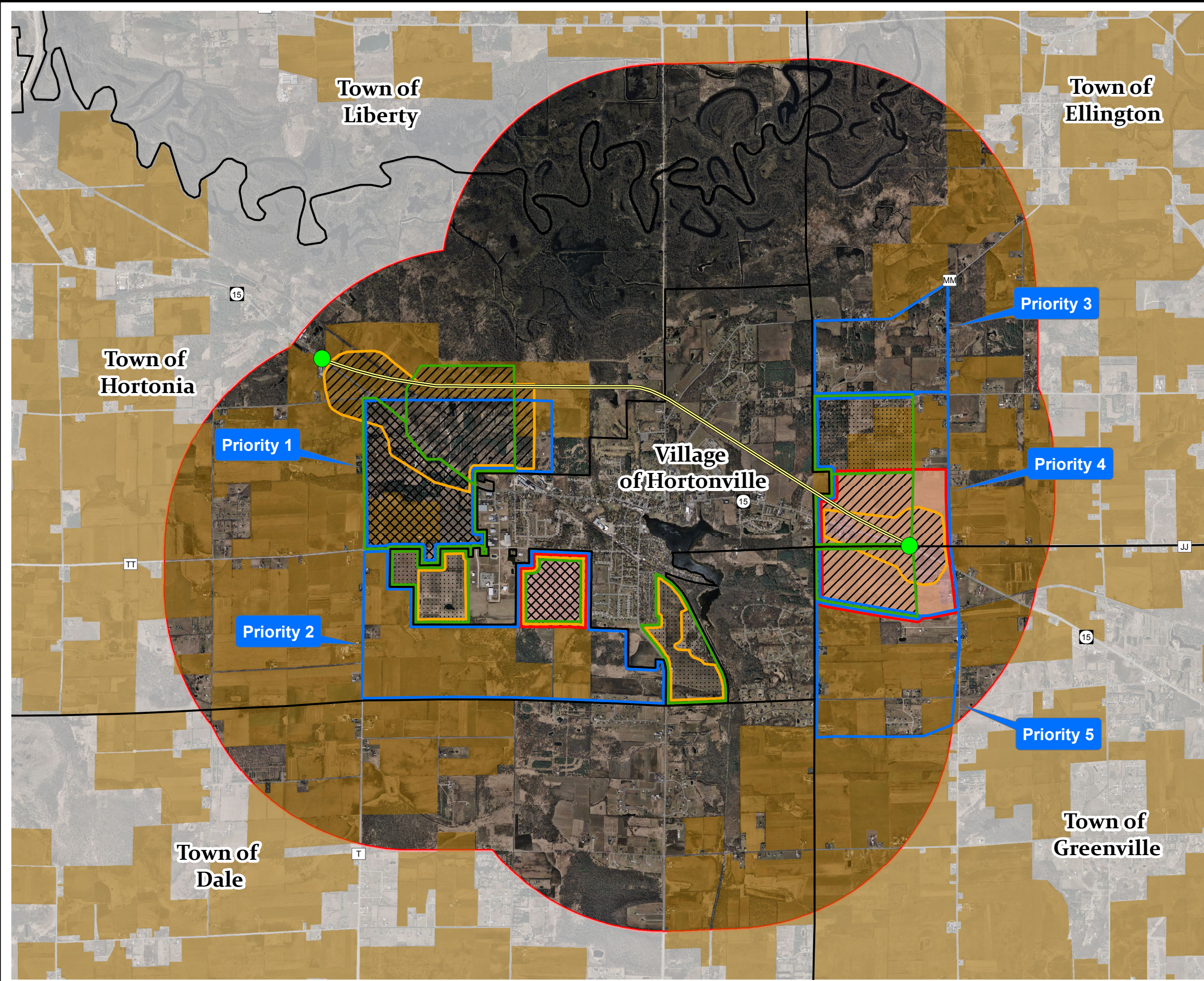
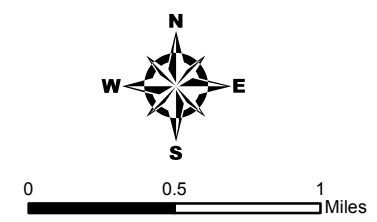


Exhibit 6 Village of Hortonville Future Development 1.5 Mile Municipal Buffer



- Planned Roundabout/Signal
 - Highway 15 Bypass
 - Municipal Boundary
 - Group 1
 - Group 2 (Priorities)
 - Group 3 (Future Annexations)
 - Group 4
- Future Land Use**
- Commercial/Industrial
 - Mixed
 - Residential
 - Future Annexations
 - Farmland Preservation
 - 1.5 Mile Buffer



Source:
Future Land Use Created by ECWRPC 2013
Digital Data Provided by Outagamie County 2010

This data was created for use by the East Central Wisconsin Regional Planning Commission Geographic Information System. Any other use/application of this information is the responsibility of the user and such use/application is at their own risk. East Central Wisconsin Regional Planning Commission disclaims all liability regarding fitness of the information for any use other than for East Central Wisconsin Regional Planning Commission business.