

Town of Quincy

Solid Waste & Recycling Updates

Christine Miller
(608) 339-9178
Christine.Miller@co.adams.wi.us

- Trucks passing each other on route
- Drivers backing up customer driveways
 - Extreme safety issue
 - Liability for property damage
 - Constantly getting stuck
- Few pickups with a lot of miles = high costs
 - 18 customers in Rome
 - 15 customers in Monroe
- Discontinuing out-of-county residential collection
 - Over weighing our trucks
 - Concentrate in Adams Co services

Stretched too thin...

- 25 options for garbage
- 25 options for recycling
- Over 1900 invoices/month
 - Paper
 - Time
 - Postage

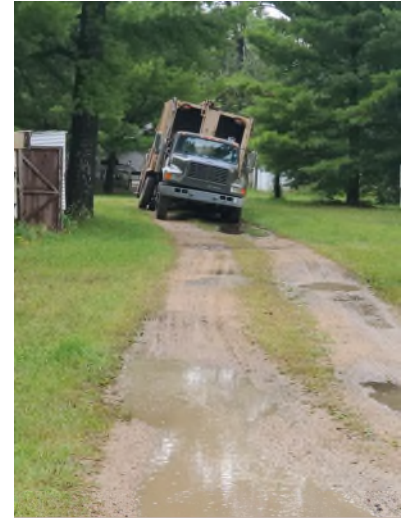
Adams County Landfill & Recycling In-County Collection Prices							
Curbside Collection - Garbage & Recycling							Option 1
Weekly garbage (5 bags/week) & Monthly Recycling: Both for \$38.00/month							
Garbage - Container Collection							
CONTAINER SIZE	Size	FREQUENCY				EXTRA PICK-UP	
		1 X month	every other week	1 X week	2 X week	On Scheduled Day	On Off Day
	95 gallon	\$12.25	\$21.50	\$39.25	\$74.75	\$9.00	\$24.25
	1 cubic yard	\$ 19.50	\$ 32.25	\$ 57.00	\$ 107.25	\$ 12.65	\$27.50
	2 cubic yard	\$ 27.00	\$ 44.75	\$ 80.25	\$ 151.50	\$ 17.50	\$32.25
	4 cubic yard	\$ 38.00	\$ 57.25	\$ 101.50	\$ 187.00	\$ 21.50	\$35.75
	6 cubic yard	\$ 46.50	\$ 71.00	\$ 121.25	\$ 220.75	\$ 24.75	\$38.50
	8 cubic yard	\$ 54.00	\$ 82.00	\$ 139.00	\$ 253.00	\$ 28.50	\$42.25
Recycling - Container Collection							
CONTAINER SIZE	Size	FREQUENCY				EXTRA PICK-UP	
		1 X month	every other week	1 X week	2 X week	On Scheduled Day	On Off Day
	90 gallon	\$ 11.25	\$ 18.00	\$ 32.00	\$ 60.25	\$ 7.50	\$24.75
	1 cubic yard	\$ 17.50	\$ 28.75	\$ 49.25	\$ 91.50	\$ 10.75	\$27.50
	2 cubic yard	\$ 23.25	\$ 36.75	\$ 65.50	\$ 121.25	\$ 14.25	\$30.50
	4 cubic yard	\$ 29.75	\$ 44.25	\$ 70.75	\$ 128.75	\$ 14.25	\$30.50
	6 cubic yard	\$ 35.25	\$ 49.50	\$ 77.75	\$ 133.50	\$ 14.25	\$30.50
	8 cubic yard	\$ 39.25	\$ 53.00	\$ 80.50	\$ 137.25	\$ 14.25	\$30.50

Subscription vs Contracted

- Subscription Service
 - Insecure
 - Inefficient
 - Expensive
- Contracted Service
 - Increased security
 - More efficient
 - Less expensive
 - Greater customer service
 - Less confusion
 - Allows for automated collection (carts)
 - The larger the contract the lower the costs



A Need for Change



Revised Services – 2 Options!!!

- Hours researching our existing routing software
- More time entering customer base into sample software
- Weekly meetings with drivers brainstorming & problem solving

Adams County Residential Curbside Collection Services		
Curbside Service	Set Out Style	Price per Month
Option 1	Weekly Garbage (all material must fit inside cart w/lid closed)	\$38.00
	Bi-weekly Recycling (all material must fit inside cart w/lid closed)	
Option 2	Bagged Gabbage (5 bag limit)	\$36.00
	Reusble Containers (No limit - containers provided by customer)	

All material must be placed at the edged of the driveway or at the roadside by 6:00 am on collection day

Short Term Solutions

Weekly Garbage – Biweekly Recycling Service

- Increase in recycling tonnages
- Decrease in landfill tonnages – save air space
- Increased customer service
- Happier employees/drivers
- Consistent with industry norms



Long Term Considerations

Curbside Carted Collection for ALL Adams Communities

- Contracts with municipalities for collection services
 - Lower prices to residents (\$12.55/month in Jackson)
 - Improved collection fleet
 - Improved routing
 - Improved education

- 95 gallon garbage & recycling carts to be provided
 - Easy to use
 - Holds large amounts of material
 - Keeps litter and pests under control
 - Improves customer service

Recycling Program Modifications

No Bagged Recycling

- Bagged recycling causes maintenance issues at the recycling facility
- Place all recycling in a reusable container or tote
- Reusable containers cannot be over 33 gallons in size & weigh more than 30 lbs when set out for collection
- Do NOT bundle & tie or bag any materials
- Use brown paper bags to keep items from blowing on windy days



Future Department Goals

- Updating the 1989 Recycling Ordinance
- Reorganizing our drop off area
- Updating municipal and commercial dumpster signage
- Increasing our commercial waste accounts
- Secure contracts with other haulers to bring MSW & SSR
- Increase Hazardous Waste Collections
 - From once every other
 - To several each year
- Provide more public educational opportunities
 - Presentations
 - Tours
 - Advertising

Questions?

Christine Miller

(608) 339-9178

Christine.Miller@co.adams.wi.us

