



# 2024

## Fall/Winter Newsletter

### Important Dates

**October 5<sup>th</sup>:** Citywide Resident Clean-Up Day - 7:45 a.m. - 10:45 a.m.

**October 12<sup>th</sup>:** Fall Fest: Motley Fair Grounds - 2:00 p.m. to 10:00 p.m. Hosted by MCEO.

**October 31<sup>st</sup>:** Trunk or Treat. 6 p.m. – 9 p.m. Hosted by Motley United Methodist Community Church.

**October 31<sup>st</sup>:** Delinquent utility accounts must be paid in full to avoid certification to the county.

**November 5<sup>th</sup>:** Election Day: Motley City Hall – polls open 7a.m. to 8p.m.

**November 11<sup>th</sup>:** Veteran's Day: City Hall closed

**November 28<sup>th</sup> & 29<sup>th</sup>:** Thanksgiving: City Hall closed

**November 29<sup>th</sup>:** Last day to payoff special assessments without interest for 2024

**December 7<sup>th</sup>:** Lunch with Santa, hosted by the Lion's

**December 9<sup>th</sup>:** Truth in Taxation Meeting – 6:30 p.m. at City Hall

**December 15<sup>th</sup>:** Christmas lighting contest. Beginning at dusk. Hosted by the Lion's and MCEO.

**December 24<sup>th</sup> & 25<sup>th</sup>:** Observance of Christmas: City Hall closed

**January 1<sup>st</sup>:** Observance of New Year's Day: City Hall closed

**January 20<sup>th</sup>:** Observance of Martin Luther King, Jr. Day: City Hall closed

**February 17<sup>th</sup>:** Observance of President's Day: City Hall closed

*Regular City Council Meetings: 2nd Monday of every month, 5:30pm, City Hall*

*Planning Commission Meetings: 3rd Monday of every month, 4pm, City Hall*

***\*P & Z now holds office hours at City Hall, Mondays 2p-4p\****

### From the desk of the mayor:

*Happy Fall residents of Motley! We have been working hard to get information out to you as best we can through our newly updated website, our Facebook page, and the newsletters. We are excited to offer the citywide Fall clean-up again this year! Please refer to the attached information page on items that can and can't be dropped off. Reminder that this is an election year so we want to see everyone out voting on November 5th!*

*- Pat O'Regan, Mayor*



### FROM THE ADMINISTRATIVE OFFICE:

- 1.) \$ .50 will be added starting December to utility billing for updating our water billing system. Fees will show an added \$.25 under water and \$.25 under sewer. Watch for updated information for autopayments with upgrade.
- 2.) \$1.00 service fee has been added to all recycling accounts due to increase in disposal fees for Long Prairie Sanitation.
- 3.) Watch our website and Facebook page for upcoming information on the City's comprehensive plan to adopt in 2025. Comp plans are intended to guide a community's vision for future growth. This is a year-long planning process and we want community involvement and ideas. The first meeting should take place the end of January, early February.

***\*\*REMINDER - you can pay utility bills on-line on our website at [www.cityofmotley.com](http://www.cityofmotley.com) \*\****



## TIPS FROM CHIEF YODER:

### Watch out for scams!



1. **Phishing:** Use of deceptive emails or text messages to trick people into revealing personal information.
2. **Fake antivirus software:** Scammers create fake security programs to steal sensitive data.
3. **Easy money and fast scam:** Fraudsters promise quick wealth in exchange for fees.
4. **Fake shopping websites and Form-jacking:** Scammers create fake online stores or steal payment information from legitimate sites.
5. **Tech support scam:** Scammers pose as tech support to gain access to computers. Never give any personal information to anyone over the phone or via the internet. Use caution when you receive any of these types of calls. If unsure, personally call your bank, credit card, or organizational source they say they are from.



## FROM FIRE CHIEF OLSON:

### Preparing for Winter:

1. Make sure you have fresh batteries and have tested your smoke alarms and carbon monoxide detectors.
2. If you use a space heater, always ensure a minimum of 3ft of space around the heater. Do not place near a curtain or in a place a blanket or other fabric item can fall on it and always turn off before going to bed.
3. For wood burning fireplace, hire a professional to clean and inspect. The National Fire Protection Association recommends cleaning annually if you use it frequently as soot and creosote can build up and become flammable.
4. Leaves and pine needles can be a fire risk outdoors. Prune trees and rake leaves, especially around recreational fire pits, and keep a hose handy when having a fire.
5. Extension cord use should be **temporary** and should NEVER be used with a heat-producing appliance. If plugging in a heat-producing item, only plug in one at a time. (ex: coffee maker, space heater, etc.)
6. Reminder that dried out fresh Christmas trees are very flammable. Dispose of them safely after the holiday season.

## COMMUNITY EVENTS

### October 12<sup>th</sup> - Fall Fest 2024:



Will be held at the Motley Fairgrounds. More details to come on the MCEO Facebook page

### October 31<sup>st</sup>:



Trunk or Treat will be at Motley Methodist Church 4 – 6 pm. All residents are invited to set up in the parking lot to hand out treats. Also look for pumpkins in the windows of participating businesses. They will hand out candy on Halloween from 4pm – 6 pm

### Sunday's October – April 2025:

Bar Bingo at Ten-Hi at 1pm Sunday's, hosted by the Lion's. Starting at \$1,000 for 46#s or less



### December 7<sup>th</sup>:

Lunch with Santa, hosted by the Lion's. Watch for information on our website and Facebook page for time and location. **\*Watch for information on dropping off letters to Santa!\***

### December 15<sup>th</sup>:



Christmas lighting contest, hosted by the Lion's and MCEO. Have your house lit and ready for display at dusk.

### Rest of the year:

Motley United Methodist Church is hosting FREE Community Breakfasts on the last Saturday of each month from 9 am -10:30 am through the rest of the year.





## From Public Works:



**HYDRANT FLUSHING:** We will be doing our annual fire hydrant flushing throughout October. You may notice some decreased water pressure or coloration during this time.

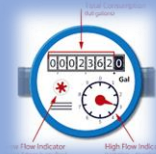
**WINTER PARKING:** Be mindful of garbage cans and parked vehicles during forecasted significant snowfall. If you have no alternative, coordinate with neighbors and park on the same side of the street. It is very difficult for the plow trucks to zig-zag through the streets.

**CITY HALL SIGN:** We know the sign needs repair, but there are other issues needing to be addressed (handicap parking/building access, etc.) that will require grade and elevation changes around the building. We will be correcting these issues along with the next street project so we can coordinate it into one project to save time and money. We plan to start the design phase next fall, with construction to start the Spring of 2027 to coincide with the replacement of the railroad crossing on 1st Ave. The sign will be repaired at that time.

**MANDATORY WATER METER REPLACEMENT:** We have been running into instances where the meter isn't accessible. Work on getting that opened up so we can finish this as soon as possible. Replacement of the meter is mandatory, takes about 25-45 minutes at no cost to the homeowner. The meter is usually located in the lower level or utility room. Public works will need to gain entry to your home or business to access the meter. Landlords, please let your tenants know that it is ok for us to change the meter without first contacting you. Thank You to those of you that have allowed us to complete your meter change on short notice!

### Important notes:

- The area around your water meter must be clear and accessible.
- Your water service will be temporarily interrupted during the installation. *(It is helpful if both valves are functional for installation. To repair defective valves, you can schedule a plumber or make the repairs yourself. The valves and all plumbing in the home are the responsibility of the homeowner. The city is not liable for repairs of defective valves or plumbing).*
- We will make every effort to re-insulate meters under trailer houses or outdoors, but it is ultimately be the homeowner's responsibility to make sure that the meter is protected from freezing. The cost to replace a frozen meter is roughly \$200.
- If we have not been to your home yet, please make sure we have current contact information. You can email [publicworks@cityofmotelley.com](mailto:publicworks@cityofmotelley.com) or call 218-352-6649. Please include your name, address and a good contact number. Water may have to be disconnected if you do not comply with this replacement installation.



**ICE SKATING RINK:** If the weather cooperates, we plan on flooding the tennis court to have the skating rink open as soon as it is cold enough. We will keep you updated on the website and Facebook pages throughout the season. The warming house will once again have donated skates and a music player. Be mindful of music content and volume while enjoying the rink so we may continue to have this available for use.

**SLEDDING HILL:** Weather permitting, the sledding hill will be open, west of the water tower.



# Upcoming Events



**October – April 2025:** Sunday Bar Bingo at Ten-Hi, 1p.m. Starting at \$1,000 for 46# or less.



**December 7<sup>th</sup>:** Lunch with Santa – TBD. Watch the City of Motley's Facebook Page and Website for more information



**December 15<sup>th</sup>:** Holiday Lights Judging Day. Judges will be driving around starting at dusk until completed. Cash Prizes! Winners will be posted on the City's Facebook page and Website. Brought to you by the Lion's and the Motley Community Events Organization (MCEO).

**3 Categories:** Best Use of Lights – Best Business – Most Creative



*Want to join the Lion's? Meetings are held the 2<sup>nd</sup> Thursday of the month at Brick's at 6 p.m.*



# Citywide Cleanup Day

## Saturday, October 5th, 2024

CITY RESIDENTS may haul your items to the City maintenance garage at 196 Eledredge St W. from 7:45-10:45 a.m. Please only bring items that are listed as acceptable below. **Items on the Not Accepted list will be turned away.**

If you would like to arrange a pickup, contact City Hall at 218-352-6200 or stop in with your completed slip (below). Cost for pickup is \$15 (or \$5 for senior citizens and disabled residents). Charges include *one load only* – additional trips will require an additional charge. **Pickup charges must be paid in advance\*** at City Hall or online at:

<https://www.govpaynow.com//gps/user/plc/a0013n>

**\*No refunds will be issued after a pickup is paid for, even if service isn't utilized.**

*\*Commercial properties: please limit the number of items dropped off to help keep costs down for our residents.*

### ACCEPTED FREE:

- Small Home appliances (incl: stoves, fridges/freezers, dishwashers, microwaves, washers/dryers, etc.)
- Computer towers, routers, cell phones, and laptops
- Scrap iron
- Rubbish, chairs (excluding recliners), storm doors, etc. and any non-construction debris.
- 3 car tires (**without rims**) per household

**ACCEPTED WITH CHARGE:** *can be paid at <https://www.govpaynow.com//gps/user/plc/a0013n>.*

Please note what you are paying for as best you can with payment.

Televisions & computer monitors	\$20
Printers, VCRs, etc	\$10
Fluorescent bulbs	\$1
Car tires (up to 20"), additional	\$4
Car tires (up to 20"), on rims	\$6
Tires R17 thru 01920	\$9
Semi-truck tires	\$13
Tractor tires	\$22
Couches, loveseats, mattresses, box springs, 2" thick mattress topper, toilets, recliners	\$2
Sulfur dioxide or ammonia gas (RV) refrigerators	\$75

**NOT ACCEPTED:** paint, construction/demolition materials (including carpet), hazardous waste.

**ACCEPTED FREE ANYTIME (at compost site, located at end of Main Street East):** Leaves (leaves being picked up must be bagged), branches less than 4" in diameter, branches larger than 4" in diameter must be de-limbed and cut in 4' – 6' lengths. Must be separated as follows: Pile 1 – grass, leaves & garden waste, Pile 2 – brush and branches with diameter of 4" or less, and Pile 3 – branches larger than 4" in diameter.

**Volunteers are needed with trucks, pickups, and/or trailers. For more information call  
City Hall at 218-352-6200 or the Public Works Department at 218-352-6649.**



*Cut here or bring to City Hall to schedule a pick-up*



Name: \_\_\_\_\_

Address: \_\_\_\_\_ Phone: \_\_\_\_\_

Please list chargeable items from your load here:

Item	Quantity	Item	Quantity

