

PHOTO LOCATION DESCRIPTION:

- PHOTO SIM 1**
 - TAKEN FROM OLD STAGE RD. NORTH OF THE SITE
 - PHOTO LOCATION ELEVATION: 963', TOWER ELEVATION: 962'
- PHOTO SIM 2**
 - TAKEN FROM SHADY WILLOW RD. EAST OF THE SITE
 - PHOTO LOCATION ELEV.: 906', TOWER ELEV.: 962',
 LOCATION OF VISIBLE HORIZON @ TREELINE, ELEV.: 922'
- PHOTO SIM 3**
 - TAKEN FROM W. UNION DANE CNTY LINE RD. SOUTH OF THE SITE.
 - PHOTO LOCATION ELEV.: 947', TOWER ELEV.: 962',
 LOCATION OF VISIBLE HORIZON @ TREELINE, ELEV.: 950'
- PHOTO SIM 4**
 - TAKEN FROM N. UNION RD. WEST OF THE SITE.
 - PHOTO LOCATION ELEV.: 958', TOWER ELEV.: 962',
 LOCATION OF VISIBLE HORIZON @ TREELINE, ELEV.: 968'
- PHOTO SIM 5**
 - TAKEN FROM USFWS LANDS OFF OF UNION RD. WEST OF THE SITE.
 - PHOTO LOCATION ELEV.: 949', TOWER ELEV.: 962',
 LOCATION OF VISIBLE HORIZON @ TREELINE, ELEV.: 973'
- PHOTO SIM 6**
 - TAKEN FROM CASARA RD. NORTH WEST OF SITE
 - SITE LOCATION FROM SIMILAR DIRECTION, BUT CLOSER THAN BAD FISH CREEK LAND.
 - PHOTO LOCATION ELEV.: 923', TOWER ELEV.: 962',
 LOCATION OF VISIBLE HORIZON @ TREELINE, ELEV.: 930'

PHOTO SIMULATION NOTES:

- THESE PHOTO SIMULATIONS ARE AN INTERPRETATION OF THE GENERAL APPEARANCE OF THE PROPOSED INSTALLATION. EACH PHOTO SIMULATION IS BASED ON THE SCALING CRITERIA OR ASSUMPTIONS IDENTIFIED
- ACTUAL PHOTOGRAPH OF AN EXISTING TOWER OF SIMILAR HEIGHT AT A SIMILAR DISTANCE HAS BEEN INCLUDED FOR COMPARISON.
- THE FINAL TOWER DESIGN AND DIMENSIONS WERE NOT AVAILABLE AT THE TIME THE PHOTO SIMULATION WAS PREPARED. THEREFORE, A TYPICAL TOWER/ANTENNA OF SIMILAR SIZE WAS UTILIZED FOR SIMULATION PURPOSES
- PHOTO SIMULATIONS WERE GENERATED USING A SIMILAR TOWER OF SIMILAR HEIGHT AT A SIMILAR DISTANCE; ARTISTIC INTERPRETATIONS UTILIZED TO ESTIMATE THE APPROXIMATE TOWER SIZE AND APPEARANCE
- THE DIFFERENCE IN ELEVATION BETWEEN THE PHOTOGRAPH LOCATION AND TOWER LOCATION HAS BEEN GENERALLY CONSIDERED
- THE TOPOGRAPHICAL FEATURES BETWEEN THE PHOTOGRAPH LOCATION INTERPRETED AS BEST AS POSSIBLE. THE VISIBILITY OF THE TOWER WILL BE DRASTICALLY REDUCED WITHIN AREAS OF MATURE VEGETATION AND VALLEYS AND INCREASED WITHIN LARGE OPEN FIELDS AND AT HIGHER ELEVATIONS

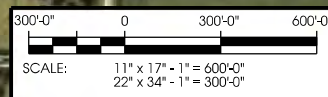


Edge Consulting Engineers, Inc.
 624 Water Street
 Profile du Soc, WI 53578
 608.644.1449 voice
 608.644.1519 fax
 www.edgeconsulting.com

PHOTO SIMULATION
WBKY FM TOWER
RUTLAND, WISCONSIN

SHEET TITLE:

PRELIMINARY CDS:	
A	SIMS- 10/19/2010
B	SIMS- 11/28/2011
C	SIMS- 03/22/2011
D	
E	
STAMPED FINALS:	
0	
1	
2	
3	
4	
DRAWN BY: JAH	
CHECKED BY: DCL	
PLOT DATE: 3/22/2011	
PROJECT #: 5080	
FILE NAME: AS-1.dgn	



SHEET NUMBER:
AS-1

I:\5080_5080_SIMS\REV\AS-1.dgn

PHOTO LOCATION DESCRIPTION:

PHOTO SIM 7
 - TAKEN FROM OLD STONE RD. NORTHEAST OF THE SITE
 NEAR BASS LAKE
 - PHOTO LOCATION ELEVATION: 878', TOWER ELEVATION: 962'
 LOCATION OF VISIBLE HORIZON @ TREELINE, ELEV.: 879'

PHOTO SIM 8
 - TAKEN FROM OAK RIDGE ROAD NORTHWEST OF THE SITE
 NEAR ANTHONY BRANCH
 - PHOTO LOCATION ELEV.: 913', TOWER ELEV.: 962'
 LOCATION OF VISIBLE HORIZON @ TREELINE, ELEV.: 922'

PHOTO SIM 9
 - TAKEN FROM HWY 138, NORTH OF THE SITE.
 NEAR ISLAND LAKE
 - PHOTO LOCATION ELEV.: 905', TOWER ELEV.: 962'

PHOTO SIM 10
 - TAKEN FROM OLD STONE RD., NORTHEAST OF THE SITE.
 NEAR BAD FISH CREEK WILDLIFE AREA
 - PHOTO LOCATION ELEV.: 874', TOWER ELEV.: 962',
 LOCATION OF VISIBLE HORIZON @ TREELINE, ELEV.: 969'



AERIAL OVERVIEW

PHOTO SIMULATION NOTES:

-THESE PHOTO SIMULATIONS ARE AN INTERPRETATION OF THE GENERAL APPEARANCE OF THE PROPOSED INSTALLATION. EACH PHOTO SIMULATION IS BASED ON THE SCALING CRITERIA OR ASSUMPTIONS IDENTIFIED

-ACTUAL PHOTOGRAPH OF AN EXISTING TOWER OF SIMILAR HEIGHT AT A SIMILAR DISTANCE HAS BEEN INCLUDED FOR COMPARISON.

-THE FINAL TOWER DESIGN AND DIMENSIONS WERE NOT AVAILABLE AT THE TIME THE PHOTO SIMULATION WAS PREPARED. THEREFORE, A TYPICAL TOWER/ANTENNA OF SIMILAR SIZE WAS UTILIZED FOR SIMULATION PURPOSES

-PHOTO SIMULATIONS WERE GENERATED USING A SIMILAR TOWER OF SIMILAR HEIGHT AT A SIMILAR DISTANCE; ARTISTIC INTERPRETATIONS UTILIZED TO ESTIMATE THE APPROXIMATE TOWER SIZE AND APPEARANCE

-THE DIFFERENCE IN ELEVATION BETWEEN THE PHOTOGRAPH LOCATION AND TOWER LOCATION HAS BEEN GENERALLY CONSIDERED

-THE TOPOGRAPHICAL FEATURES BETWEEN THE PHOTOGRAPH LOCATION INTERPRETED AS BEST AS POSSIBLE. THE VISIBILITY OF THE TOWER WILL BE DRASTICALLY REDUCED WITHIN AREAS OF MATURE VEGETATION AND VALLEYS AND INCREASED WITHIN LARGE OPEN FIELDS AND AT HIGHER ELEVATIONS



Edge Consulting Engineers, Inc.
 624 Water Street
 Profile du Soc. WI 53578
 608.644.1449 voice
 608.644.1519 fax
 www.edgeconsulting.com

PHOTO SIMULATION
WBKY FM TOWER
RUTLAND, WISCONSIN

SHEET TITLE:

PRELIMINARY CDS:	
A	SIMS- 10/19/2010
B	SIMS- 11/28/2011
C	SIMS- 03/22/2011
D	
E	

STAMPED FINALS:	
0	
1	
2	
3	
4	

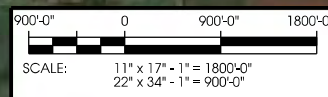
DRAWN BY:
JAH

CHECKED BY:
DCL

PLOT DATE:
3/22/2011

PROJECT #:
5080

FILE NAME:
AS-2.dgn



SHEET NUMBER:
AS-2

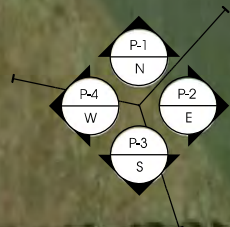
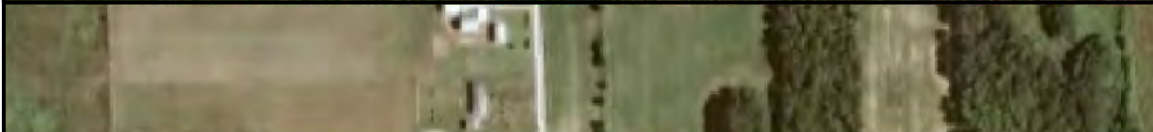
I:\5080\5080\SIMS\REV\AS-2.dgn



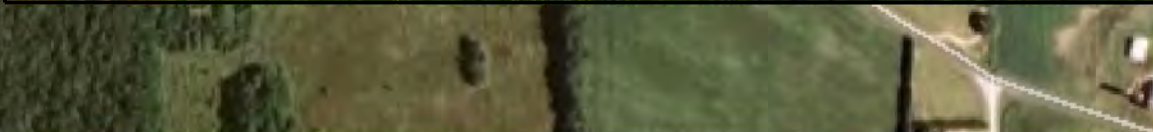
P-1
N



P-2
E



P-4
W



P-3
S



Union-Dane Rd

Casara Rd

Old Stage Rd

Edge
Consulting Engineers, Inc.
624 Water Street
Poulsbo, WA 98267
608.644.1449
608.644.1519 fax
www.edgeconsult.com

SITE PHOTOS
WBKY FM TOWER
RUTLAND, WISCONSIN

SHEET TITLE:

PRELIMINARY CDS:	
A	SIMS- 10/19/2010
B	SIMS- 11/28/2011
C	SIMS- 03/22/2011
D	
E	
STAMPED FINALS:	
0	
1	
2	
3	
4	

DRAWN BY:
JAH

CHECKED BY:
DCL

PLOT DATE:
3/22/2011

PROJECT #:
5080

FILE NAME:
P-1.dgn

SHEET NUMBER:
P-1

PHOTO SIMULATION
WBKY FM TOWER
RUTLAND, WISCONSIN



DISPLAYED 500'-0"
 GUYED TOWER



**ACTUAL PHOTO
 BEFORE PHOTO SIMULATION**

I:\5080\5080\SIMS\Plan\PS-1.dgn

SHEET TITLE:

PRELIMINARY CDS:

A	SIMS- 10/19/2010
B	SIMS- 11/28/2011
C	SIMS- 03/22/2011
D	
E	

STAMPED FINALS:

0	
1	
2	
3	
4	

DRAWN BY:

JAH

CHECKED BY:

DCL

PLOT DATE:

3/22/2011

PROJECT #:

5080

FILE NAME:

PS-Ldgn

SHEET NUMBER:

PS-1

PHOTO SIMULATION DESCRIPTION:

FOLLOWING UTILIZED FOR PHOTO SIMULATION
 -PHOTOGRAPH OF EXISTING TOWER UTILIZED FOR PHOTO SIMULATION
 -PHOTOGRAPH ESTIMATED AT APPROX. 2100' AWAY FROM TOWER LOCATION
 -REFERENCE TOWER WAS APPROX. SAME DISTANCE AWAY AS PROPOSED TOWER. (2125')
 -DISPLAYED TOWER APPROXIMATES AS 500', PROPOSED TOWER = 489'

PHOTO SIMULATION
WBKY FM TOWER
RUTLAND, WISCONSIN



**ACTUAL PHOTO
 BEFORE PHOTO SIMULATION**

I:\5080\5080\SIMS\Plan\PS-2.dgn

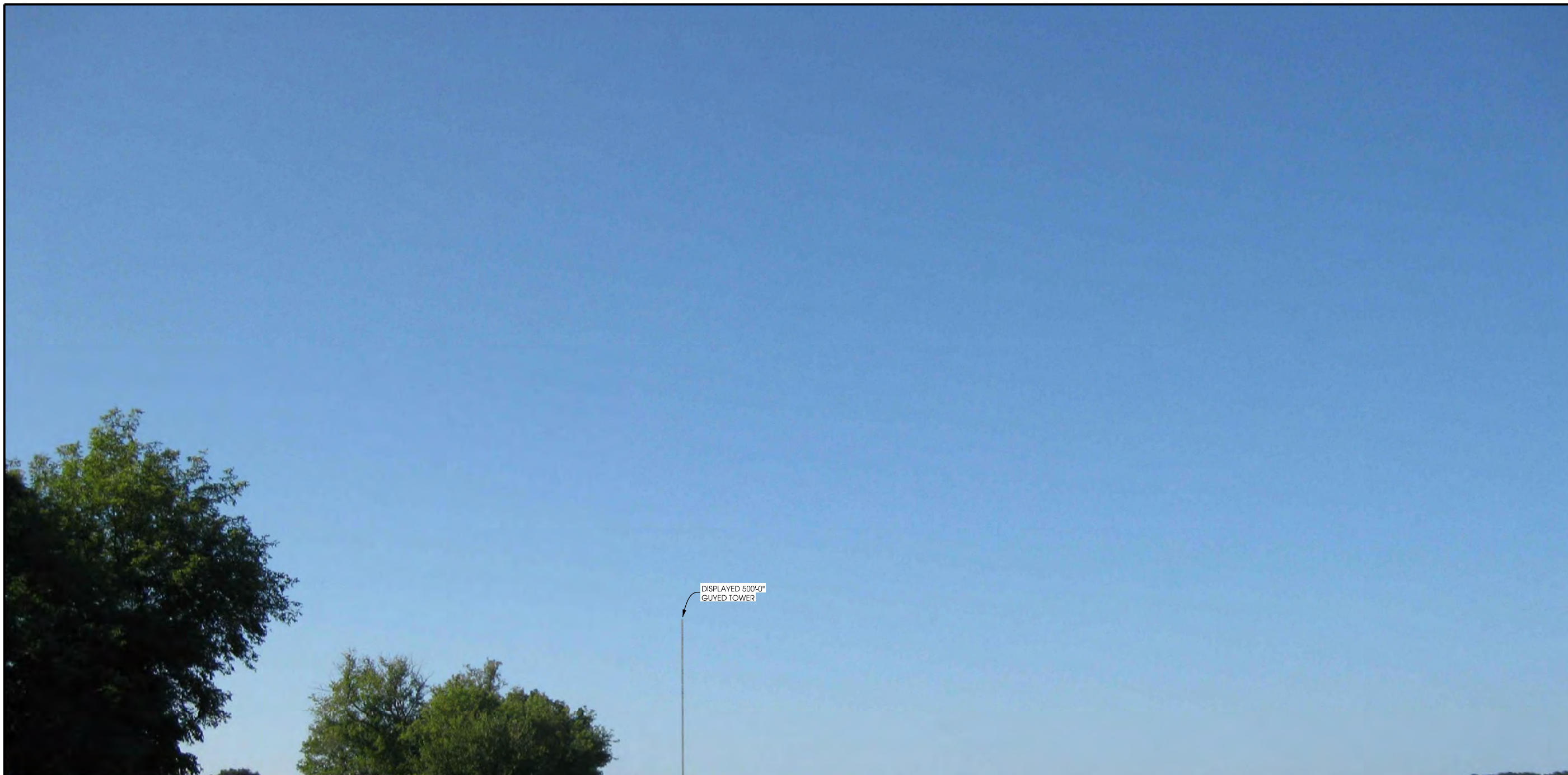
SHEET TITLE:

PRELIMINARY CDS:	
A	SIMS- 10/19/2010
B	SIMS- 11/28/2011
C	SIMS- 03/22/2011
D	
E	
STAMPED FINALS:	
0	
1	
2	
3	
4	
DRAWN BY: JAH	
CHECKED BY: DCL	
PLOT DATE: 3/22/2011	
PROJECT #: 5080	
FILE NAME: PS-2.dgn	

PHOTO SIMULATION DESCRIPTION:
 FOLLOWING UTILIZED FOR PHOTO SIMULATION
 -PHOTOGRAPH OF EXISTING TOWER UTILIZED FOR PHOTO SIMULATION
 -PHOTOGRAPH ESTIMATED AT APPROX. 3960' AWAY FROM TOWER LOCATION
 -REFERENCE TOWER WAS APPROX. SAME DISTANCE AWAY AS PROPOSED TOWER. (3952')
 -DISPLAYED TOWER APPROXIMATES AS 500', PROPOSED TOWER = 489'

SHEET NUMBER:
PS-2

PHOTO SIMULATION
WBKY FM TOWER
RUTLAND, WISCONSIN



DISPLAYED 500'-0"
 GUYED TOWER

TOWER HORIZON LINE

TREE HORIZON LINE



ACTUAL PHOTO
BEFORE PHOTO SIMULATION

I:\5080\5080\SIMS\Plot\PS-3.dgn

SHEET TITLE:

PRELIMINARY CDS:

A	SIMS- 10/19/2010
B	SIMS- 11/28/2011
C	SIMS- 03/22/2011
D	
E	

STAMPED FINALS:

0	
1	
2	
3	
4	

DRAWN BY:

JAH

CHECKED BY:

DCL

PLOT DATE:

3/22/2011

PROJECT #:

5080

FILE NAME:

PS-3.dgn

SHEET NUMBER:

PS-3

PHOTO SIMULATION DESCRIPTION:

FOLLOWING UTILIZED FOR PHOTO SIMULATION
 -PHOTOGRAPH OF EXISTING TOWER UTILIZED FOR PHOTO SIMULATION
 -PHOTOGRAPH ESTIMATED AT APPROX. 3078' AWAY FROM TOWER LOCATION
 -REFERENCE TOWER WAS CONSIDERABLY CLOSER THEN PROPOSED TOWER. (2795')
 -DISPLAYED TOWER APPROXIMATES AS 500', PROPOSED TOWER = 489'

PHOTO SIMULATION
WBKY FM TOWER
RUTLAND, WISCONSIN



ACTUAL PHOTO BEFORE PHOTO SIMULATION

DISPLAYED 500'-0"
 GUYED TOWER

HORIZON LINE

PHOTO SIMULATION DESCRIPTION:
 FOLLOWING UTILIZED FOR PHOTO SIMULATION
 -PHOTOGRAPH OF EXISTING TOWER UTILIZED FOR PHOTO SIMULATION
 -PHOTOGRAPH ESTIMATED AT APPROX. 2670' AWAY FROM TOWER LOCATION
 -REFERENCE TOWER WAS CONSIDERABLY CLOSER THEN PROPOSED TOWER. (2250')
 -DISPLAYED TOWER APPROXIMATES AS 500', PROPOSED TOWER = 489'

SHEET TITLE:

PRELIMINARY CDS:	
A	SIMS- 10/19/2010
B	SIMS- 11/28/2011
C	SIMS- 03/22/2011
D	
E	
STAMPED FINALS:	
0	
1	
2	
3	
4	
DRAWN BY: JAH	
CHECKED BY: DCL	
PLOT DATE: 3/22/2011	
PROJECT #: 5080	
FILE NAME: PS-4.dgn	

SHEET NUMBER:
PS-4

I:\5080\5080\SIMS\Plan\PS-4.dgn

PHOTO SIMULATION
WBKY FM TOWER
RUTLAND, WISCONSIN



DISPLAYED 500'-0"
 GUYED TOWER

PHOTO SIMULATION DESCRIPTION:

- FOLLOWING UTILIZED FOR PHOTO SIMULATION
- PHOTOGRAPH OF EXISTING TOWER UTILIZED FOR PHOTO SIMULATION
- PHOTOGRAPH ESTIMATED AT APPROX. 3730' AWAY FROM TOWER LOCATION
- REFERENCE TOWER WAS APPROX. SAME DISTANCE AWAY AS PROPOSED TOWER. (3750')
- DISPLAYED TOWER APPROXIMATES AS 500', PROPOSED TOWER = 489'

I:\5080\5080\SIMS\Plan\PS-5.dgn



ACTUAL PHOTO BEFORE PHOTO SIMULATION

SHEET TITLE:

PRELIMINARY CDS:	
A	SIMS- 10/19/2010
B	SIMS- 11/28/2011
C	SIMS- 03/22/2011
D	
E	
STAMPED FINALS:	
0	
1	
2	
3	
4	
DRAWN BY:	
JAH	
CHECKED BY:	
DCL	
PLOT DATE:	
3/22/2011	
PROJECT #:	
5080	
FILE NAME:	
PS-5.dgn	

SHEET NUMBER:
PS-5



**ACTUAL PHOTO
BEFORE PHOTO SIMULATION**

I:\5080\5080\SIMS\Plan\PS-6.dgn

**PHOTO SIMULATION
WBKY FM TOWER
RUTLAND, WISCONSIN**

SHEET TITLE:

PRELIMINARY CDS:	
A	SIMS- 10/19/2010
B	SIMS- 11/28/2011
C	SIMS- 03/22/2011
D	
E	
STAMPED FINALS:	
0	
1	
2	
3	
4	
DRAWN BY: JAH	
CHECKED BY: DCL	
PLOT DATE: 3/22/2011	
PROJECT #: 5080	
FILE NAME: PS-6.dgn	
SHEET NUMBER:	

PHOTO SIMULATION DESCRIPTION:
 FOLLOWING UTILIZED FOR PHOTO SIMULATION
 -PHOTOGRAPH OF EXISTING TOWER UTILIZED FOR PHOTO SIMULATION
 -PHOTOGRAPH ESTIMATED AT APPROX. 3870' AWAY FROM TOWER LOCATION
 -REFERENCE TOWER WAS APPROX. SAME DISTANCE AWAY AS PROPOSED TOWER. (3750')
 -DISPLAYED TOWER APPROXIMATES AS 500', PROPOSED TOWER = 489'

PHOTO SIMULATION
WBKY FM TOWER
RUTLAND, WISCONSIN



ACTUAL PHOTO BEFORE PHOTO SIMULATION

I:\5080\5080\SIMS\Plan\PS-7.dgn

PHOTO SIMULATION DESCRIPTION:
 FOLLOWING UTILIZED FOR PHOTO SIMULATION
 -PHOTOGRAPH OF EXISTING TOWER UTILIZED FOR PHOTO SIMULATION
 -PHOTOGRAPH ESTIMATED AT APPROX. 13750' AWAY FROM TOWER LOCATION
 -REFERENCE TOWER WAS CONSIDERABLY CLOSER THEN PROPOSED TOWER. (12975')
 -DISPLAYED TOWER APPROXIMATES AS 500', PROPOSED TOWER = 489'

SHEET TITLE:

PRELIMINARY CDS:	
A	SIMS- 10/19/2010
B	SIMS- 11/28/2011
C	SIMS- 03/22/2011
D	
E	
STAMPED FINALS:	
0	
1	
2	
3	
4	
DRAWN BY: JAH	
CHECKED BY: DCL	
PLOT DATE: 3/22/2011	
PROJECT #: 5080	
FILE NAME: PS-7.dgn	

SHEET NUMBER:
PS-7

PHOTO SIMULATION
WBKY FM TOWER
RUTLAND, WISCONSIN



**ACTUAL PHOTO
 BEFORE PHOTO SIMULATION**

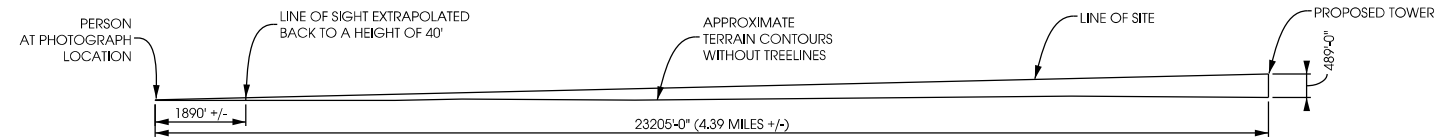
I:\5080\5080\SIMS\Plot\PS-8.dgn

SHEET TITLE:

PRELIMINARY CDS:	
A	SIMS- 10/19/2010
B	SIMS- 11/28/2011
C	SIMS- 03/22/2011
D	
E	
STAMPED FINALS:	
0	
1	
2	
3	
4	
DRAWN BY: JAH	
CHECKED BY: DCL	
PLOT DATE: 3/22/2011	
PROJECT #: 5080	
FILE NAME: PS-8.dgn	

PHOTO SIMULATION DESCRIPTION:
 FOLLOWING UTILIZED FOR PHOTO SIMULATION
 -PHOTOGRAPH OF EXISTING TOWER UTILIZED FOR PHOTO SIMULATION
 -PHOTOGRAPH ESTIMATED AT APPROX. 13800' AWAY FROM TOWER LOCATION
 -REFERENCE TOWER WAS CONSIDERABLY CLOSER THEN PROPOSED TOWER. (12975')
 -DISPLAYED TOWER APPROXIMATES AS 500', PROPOSED TOWER = 489'

SHEET NUMBER:
PS-8



BASED ON THE LINE OF SIGHT DIAGRAM, AN APPURTENANCE IN THE FOREGROUND, APPROXIMATELY 1890' FROM THE PHOTO LOCATION THAT IS 40' TALL WOULD APPEAR THE EQUIVALENT HEIGHT OF THE PROPOSED TOWER. THIS DOES NOT ACCOUNT FOR LOSS IN ACCUTENESS OF OUR TOWER IN THE BACKGROUND AND OTHER VISUAL OBSCUREMENTS OF AN OBJECT 4.39 MILES AWAY.

A
PS-9 **LINE OF SIGHT DIAGRAM**
 SCALE: 11 x 17 - 1" = 4000'-0"



ACTUAL PHOTO BEFORE PHOTO SIMULATION

PHOTO SIMULATION DESCRIPTION:
 FOLLOWING UTILIZED FOR PHOTO SIMULATION
 -PHOTOGRAPH ESTIMATED AT APPROX. 23205'
 (4.39 MILES +/-) AWAY FROM TOWER LOCATION
 -DUE TO SIGNIFICANT DISTANCE TO TOWER
 NO PHOTO SIMULATION PROVIDED.
 -SEE LINE OF SIGHT DIAGRAM FOR RELATIVE
 COMPARISON.

PHOTO SIMULATION
WBKY FM TOWER
RUTLAND, WISCONSIN

SHEET TITLE:

PRELIMINARY CDS:	
A	SIMS- 10/19/2010
B	SIMS- 11/28/2011
C	SIMS- 03/22/2011
D	
E	
STAMPED FINALS:	
0	
1	
2	
3	
4	

DRAWN BY:
 JAH

CHECKED BY:
 DCL

PLOT DATE:
 4/8/2011

PROJECT #:
 5080

FILE NAME:
 PS-9.dgn

SHEET NUMBER:

PS-9

PHOTO SIMULATION
WBKY FM TOWER
RUTLAND, WISCONSIN



**ACTUAL PHOTO
 BEFORE PHOTO SIMULATION**

DISPLAYED 500'-0"
 GUYED TOWER

HORIZON LINE

PHOTO SIMULATION DESCRIPTION:

FOLLOWING UTILIZED FOR PHOTO SIMULATION
 -PHOTOGRAPH OF EXISTING TOWER UTILIZED FOR PHOTO SIMULATION
 -PHOTOGRAPH ESTIMATED AT APPROX. 11840' AWAY FROM TOWER LOCATION
 -REFERENCE TOWER WAS CONSIDERABLY CLOSER THEN PROPOSED TOWER. (10625')
 -DISPLAYED TOWER APPROXIMATES AS 500', PROPOSED TOWER = 489'

SHEET TITLE:

PRELIMINARY CDS:

A	SIMS- 10/19/2010
B	SIMS- 11/28/2011
C	SIMS- 03/22/2011
D	
E	

STAMPED FINALS:

0	
1	
2	
3	
4	

DRAWN BY:

JAH

CHECKED BY:

DCL

PLOT DATE:

3/22/2011

PROJECT #:

5080

FILE NAME:

PS-10.dgn

SHEET NUMBER:

PS-10