



# Earth Day

## Resource Pack

# Earth



# Recycle



# Protect



# Nature



# Rubbish



# Plant



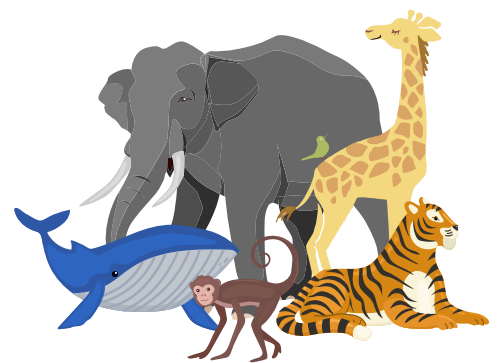
# Clean



# Garden



# Animals



# Happy Earth Day

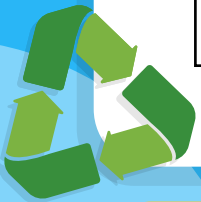
Name: \_\_\_\_\_

Date: \_\_\_\_\_

## Word Search!



E	A	R	T	H	P	O	P	F
S	I	E	E	C	U	P	L	O
O	R	C	R	N	C	L	A	R
L	A	Y	E	U	E	H	N	E
A	N	C	U	R	W	R	T	S
R	D	L	S	O	I	E	G	T
G	R	E	E	N	N	U	D	Y
C	L	E	A	N	D	S	R	D
P	R	U	B	B	I	S	H	W



EARTH  
RECYCLE  
GREEN  
FOREST

RUBBISH  
AIR  
ENERGY  
REUSE

CLEAN  
SOLAR  
PLANT  
WIND



# Earth Day Sorting Activity

Recycle, Compost, or Trash. Drag and drop the provided items and then add more of your own!

**Bad for Earth**

**Good for Earth**

Plastic bottles

Milk cartons

Fizzy drink can

Apple cores

Banana peel

Vegetable scraps

Newspaper

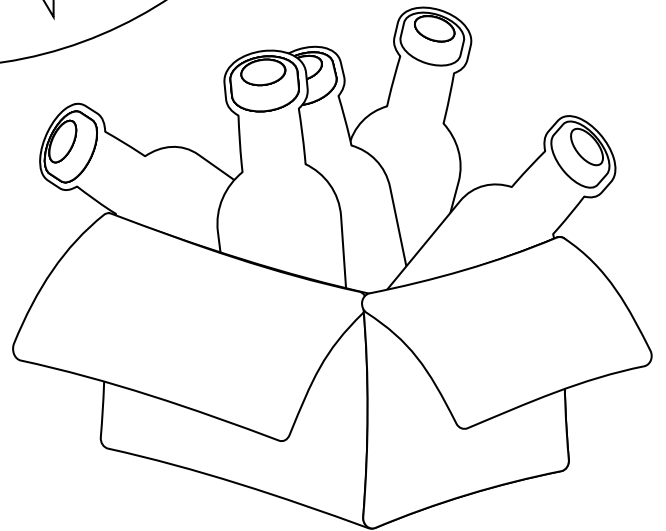
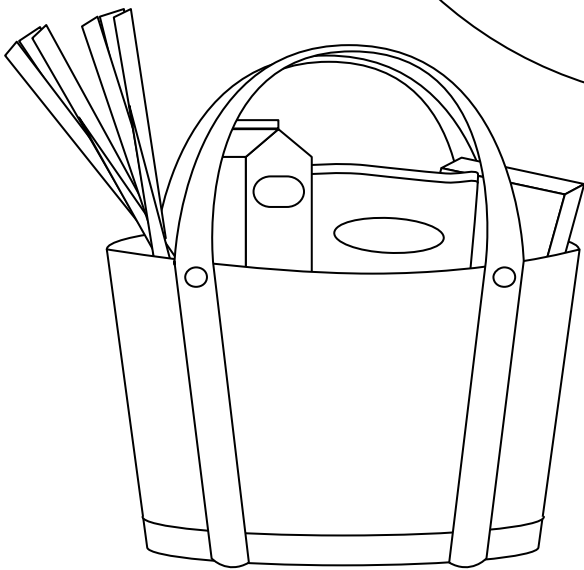
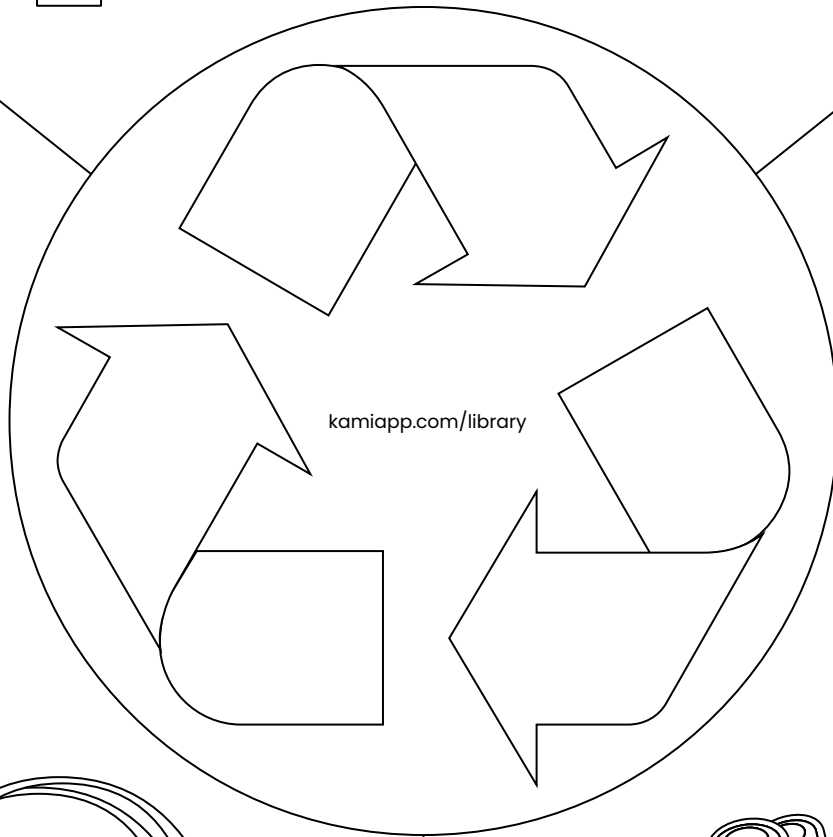
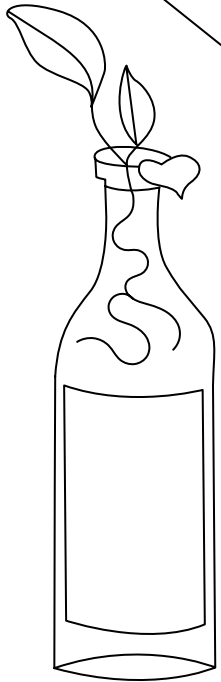
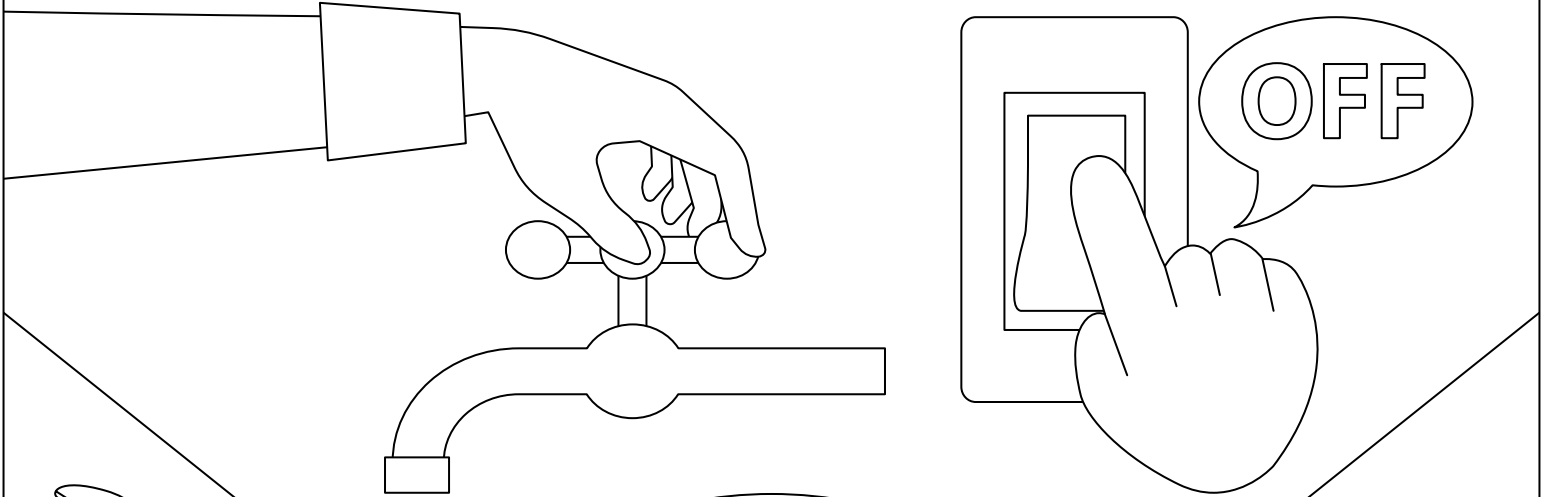
Cardboard

Magazines

Plastic bags

Plastic straws

# REDUCE



# REUSE

# RECYCLE

# Earth Day Report

What is Earth Day and what is the history behind it?

---

---

---

---

---

---

---

---

What is this year's theme and focus?

---

---

---

---

---

---

---

---

What are the biggest environment problems our planet faces today?

---

---

---

---

---

---

---

---

How can you get involved in making a difference for the Earth?

---

---

---

---

---

---

---

Use the Add Media tool  to insert a Youtube video about Earth Day. Summarise the key points of this video.

---

---

---

---

---

---

---

---

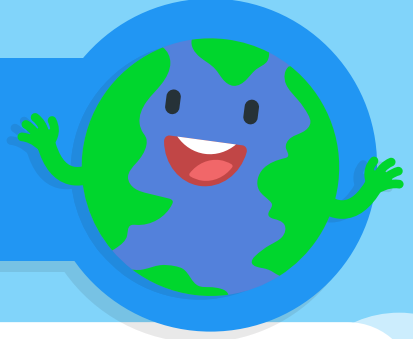
---

---



# Happy Earth Day

04.22.2024



Complete the sentences with the words provided

recycle

tap

vegetables

walk

plant

Earth

heal

bike

1. The \_\_\_\_\_ needs us.
2. We need to \_\_\_\_\_ the earth.
3. I can \_\_\_\_\_ a tree.
4. I can \_\_\_\_\_ my rubbish.
5. I can ride my \_\_\_\_\_.
6. I can \_\_\_\_\_ to school.
7. I can turn the \_\_\_\_\_ off tightly.
8. I can grow some \_\_\_\_\_.

Draw a picture of you helping to heal the Earth



# Earth Day Headband

**You will need:**

- Colouring pens
- Scissors
- Tape or glue

**Instructions:**

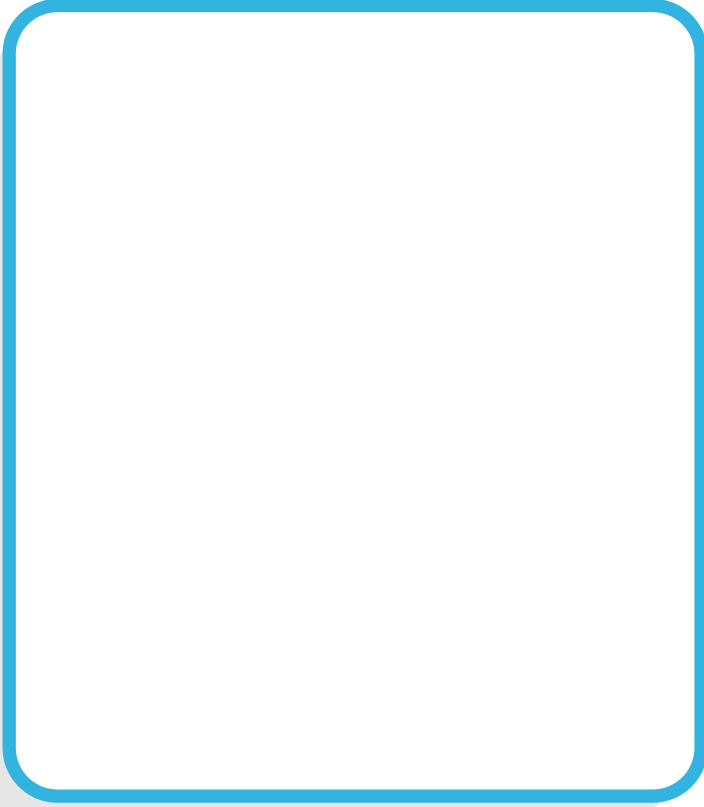
1. Colour the design as desired.
2. Cut out the template.
3. Overlap the edges of the base and tape together to complete the headband. Adjust accordingly.
4. If needed, use the second rectangle to extend the length of the headband.



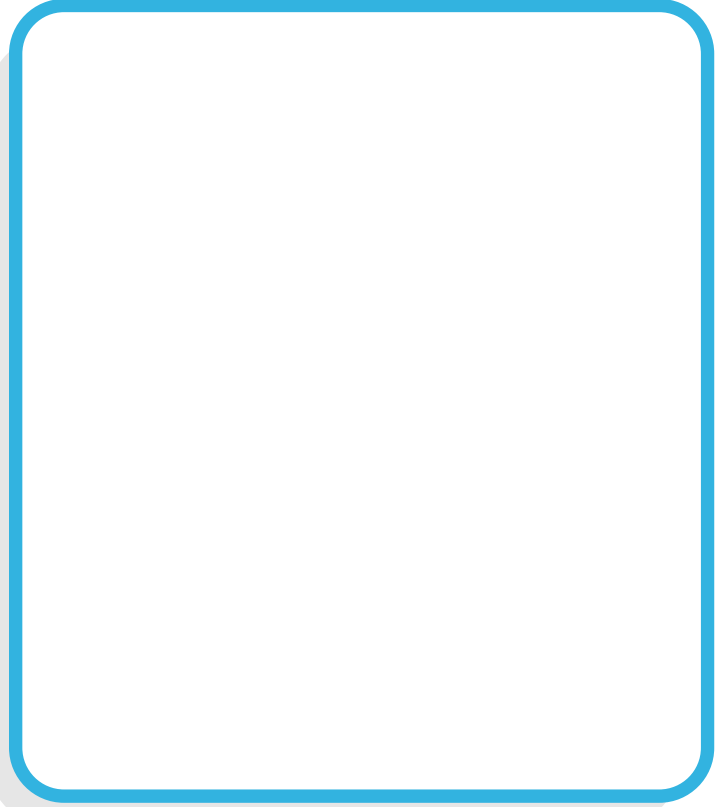
# Endangered Species

Choose an animal, research why it's in danger, discover how people are helping, and design a way to spread awareness.

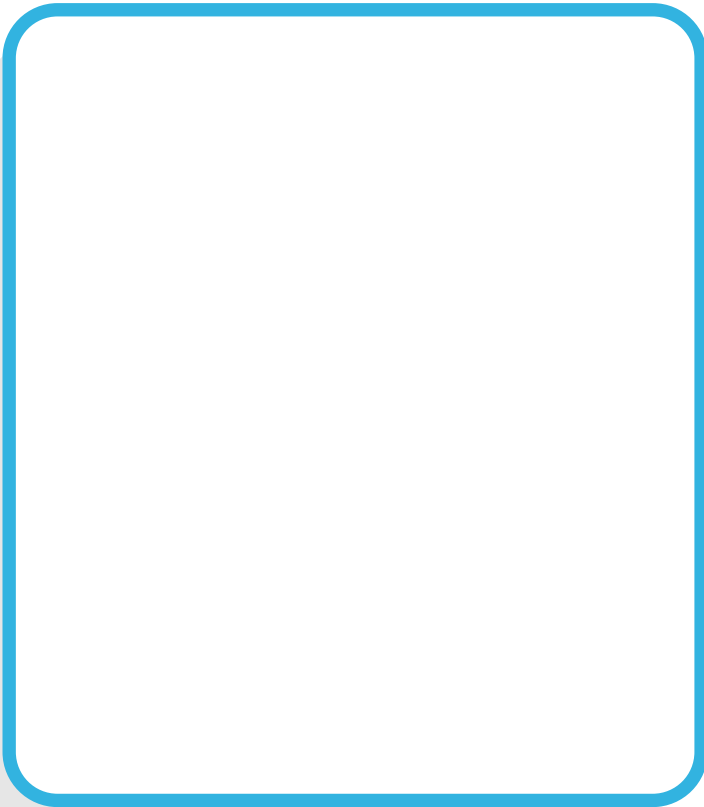
**Chosen Animal:**



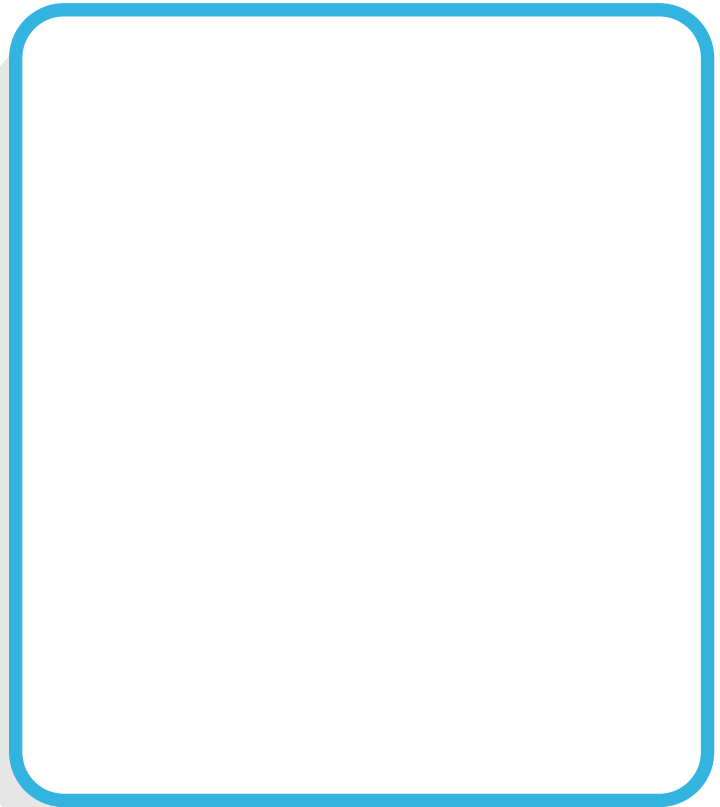
**Habitat:**



**Diet:**



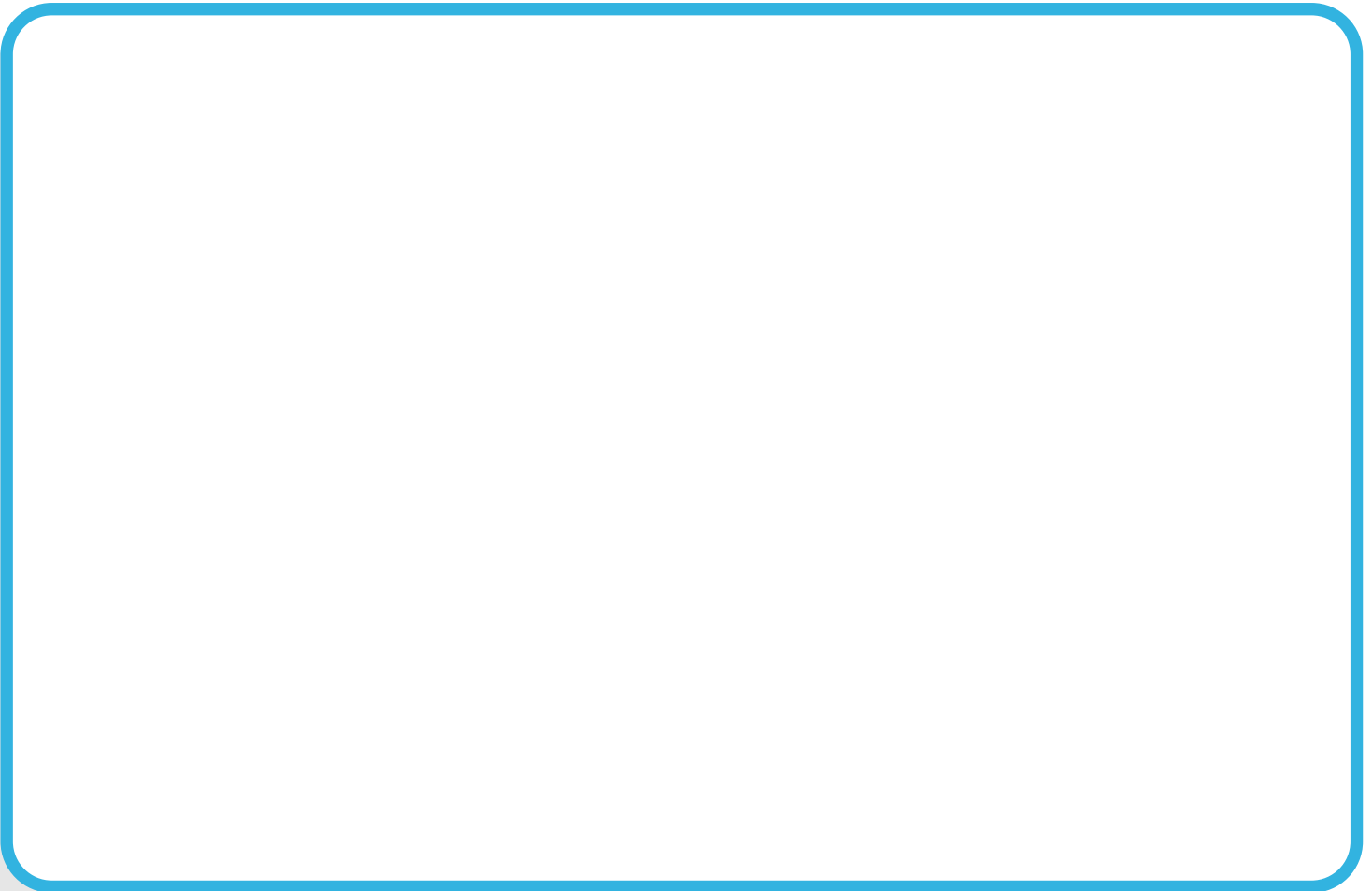
**Appearance:**



**Why is it endangered:**



**What is being done to save this animal?**



**Design a plan to spread awareness:**

# The Food Web

1) Connect the animals in the food web with arrows to show who eats whom.



2) In the right column, provide a clear and concise explanation or description for each label.

Label	Explanation
1. Producer	
2. Primary Consumer	
3. Secondary Consumer	
4. Tertiary Consumer	
5. Decomposer	
6. Predator-Prey Relationship	
7. Trophic Level	
8. Energy Flow	
9. Human Impact	

# The Life of a Tree

Trees are an important part of our planet. They provide oxygen for us to breathe, give us shade, and create homes for many animals. Trees also have a life cycle. In the spring, the tree starts to grow new leaves. The leaves are small and bright green. The tree is very busy in the spring, as it tries to make as many leaves as possible. In the summer, the leaves grow bigger and the tree makes food from the sun. This food is called glucose, and it helps the tree grow even more leaves. In the autumn, the leaves change colour and fall off the tree. This is because the tree doesn't need the leaves anymore. The leaves turn colours like yellow, orange, and red. Some trees even have purple leaves! Finally, in the winter, the tree rests and prepares for the next year. The tree is bare and looks dead, but it is really just resting. Some trees can live for hundreds of years!

1. What are some things that trees provide for us?

---

---

---

2. What happens to a tree in the spring?

---

---

---

3. What is the colour of the leaves in the spring?

---

---

---

4. What does the tree do in the summer?

---

---

---

5. Why do the leaves fall off the tree in the autumn?

---

---

---

6. What are some of the colours that leaves turn in the autumn?

---

---

---

7. What does the tree do in the winter?

---

---

---

8. Can trees live for hundreds of years?

---

---

---



# Food Web Assessment

---

Answer all questions to the best of your ability. Use diagrams or short explanations when necessary.

## 1: Multiple Choice (1 point each)

Which of the following is an example of a primary consumer?

- a) Hawk
- b) Grasshopper
- c) Snake
- d) Mushroom

The ultimate source of energy in most food webs is:

- a) Producers
- b) Detritivores
- c) The sun
- d) Top predators

A decrease in the population of a secondary consumer would likely lead to:

- a) An increase in primary consumer populations
- b) A decrease in producer populations
- c) An increase in top predator populations
- d) No change in other populations

## 2: Fill in the Blanks (2 points each)

Organisms that break down dead organic matter are known as

---

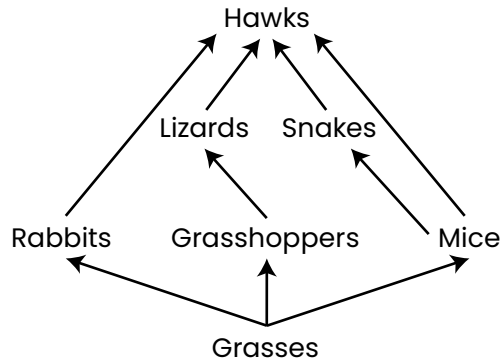
The transfer of energy from one trophic level to the next is often represented by a

---

A complex network of interconnected food chains within an ecosystem is called a

---

### 3: Diagram Analysis (5 points)



Identify the following in the food web:

One producer \_\_\_\_\_

One herbivore \_\_\_\_\_

One tertiary consumer \_\_\_\_\_

If the population of the producer increases significantly, describe the potential impact on two other organisms in the food web.

### 4: Short Answer (4 points each)

Explain the concept of biomagnification. Provide an example of how this process might affect organisms in a food web.

Discuss the differences between a food chain and a food web. Explain why a food web provides a more realistic representation of energy flow in an ecosystem.

# Earth Day Vocabulary Sheet

**WORDS:**

**DEFINITION:**

**EXAMPLE:**

Earth

Reuse

Land

Air

Recycle

# Earth Day Vocabulary Sheet

**WORDS:**

**DEFINITION:**

**EXAMPLE:**

Pollution

Paper

Reduce

Energy

Oxygen

# Earth Day Vocabulary Sheet

**WORDS:**

**DEFINITION:**

**EXAMPLE:**

Habitat

Oceans

Fossil Fuels

Tree

Environment

# The Food Web Knowledge Check

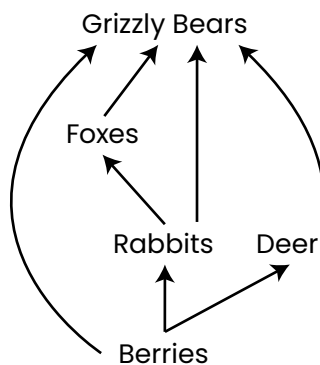
---

Which of the following is NOT a primary consumer?

- A. Grasshopper
- B. Squirrel
- C. Lion
- D. Caterpillar

What is the term for organisms that get their energy from the sun?

Which organism in this food web is an omnivore? Explain your choice.



---

Rank these organisms from lowest to highest trophic level: hawk, berries, mouse, grass.

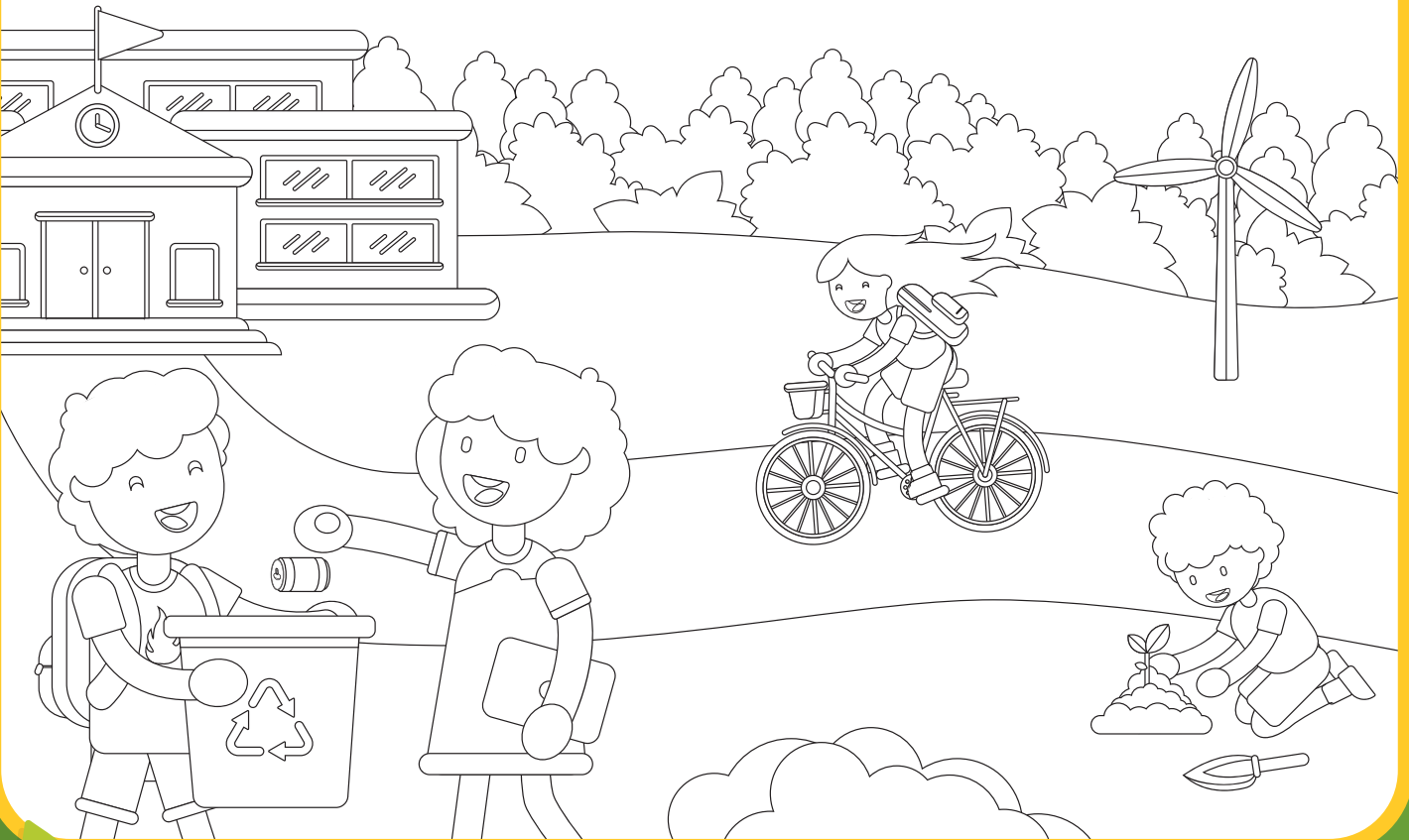
What would happen to a food web if the top predator is removed? Discuss potential short-term and long-term effects.

# Helping Planet Earth

Name:

Date:

Colour in the scene below and let your peers know how you can help Earth



I can help Earth by:

1.

2.

3.

4.

5.