



# HONOUR THE KING OF KINGS

## HONOUR CREST

CREATE YOUR OWN VERSION OF HONOUR CREST THAT YOU WOULD USE TO HONOUR THE KING OF KINGS. THEN, COMPLETE THE CROWN SEARCH AND BIBLE VERSE ACTIVITY BELOW.

CREATE YOUR HONOUR CREST

CIRCLE THE THINGS YOU CAN HONOUR GOD WITH.

- TIME
- WORSHIP
- WORDS
- TALENTS
- MONEY
- SLEEP
- PLAY
- PRAY
- HELP THE POOR

WRITE DOWN THIS WEEK'S VERSE AND SHARE WITH SOMEONE WHAT EACH PHRASE MEANS.

1 PETER 2:17 (NKJV)

HOW MANY CROWNS CAN YOU FIND?



ANSWER: 15



## DIY PAPER CROWN

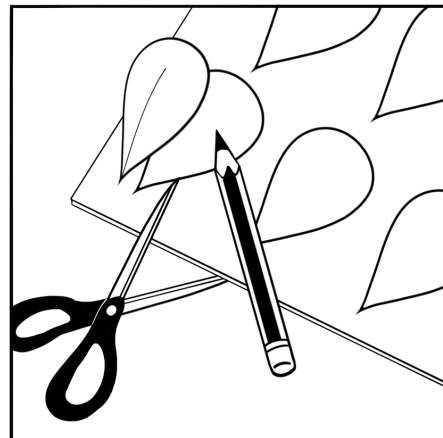
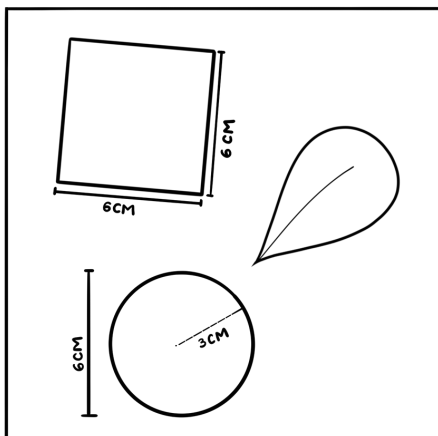
MAKE YOUR OWN PAPER CROWN BY UPCYCLING MAGAZINES, PAPER BAGS, CRAFT PAPER AND USED WRAPPING PAPER. THEN, PUT IT ON AND SHARE WITH YOUR FRIENDS HOW YOU WILL COMMIT TO HONOUR THE KING OF KINGS THIS WEEK.

### YOU WILL NEED:

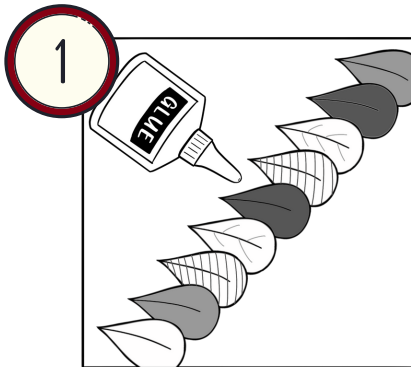
- SCISSORS AND GLUE
- HARD CARD/CARDBOARD TEMPLATE IN YOUR DESIRED SHAPE
- USED WRAPPING PAPER, OLD MAGAZINES, CRAFT PAPER, PAPER BAGS
- OPTIONAL DECORATIVE ITEMS LIKE RIBBONS, STUDS, GEMS, STICKERS

### STEPS:

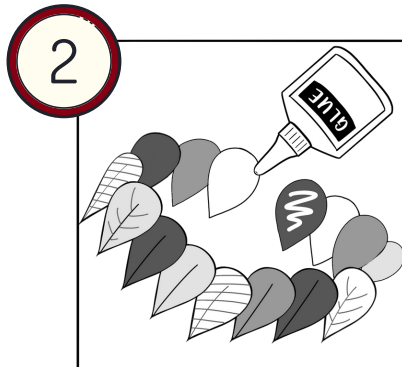
1. FIRST, MAKE YOUR CROWN TEMPLATE WITH HARD CARD/CARDBOARD IN YOUR DESIRED SHAPE SUCH AS A PERFECT 6CM X 6CM SQUARE, LEAF OR 6CM DIAMETER CIRCLE.
2. TRACE THE TEMPLATE ONTO THE UPCYCLED PAPER MATERIALS IN THE QUANTITY NEEDED TO MAKE THE CROWN WIDE ENOUGH TO FIT ON YOUR HEAD.
3. CUT THE SHAPES OUT.
4. GLUE THE SHAPES TOGETHER TO MAKE A PAPER CROWN FOLLOWING THE STEPS BELOW DEPENDING ON WHICH TYPE OF CROWN YOU WOULD LIKE TO MAKE.



**LEAF CROWN WITH LEAVES/OTHER SHAPES**

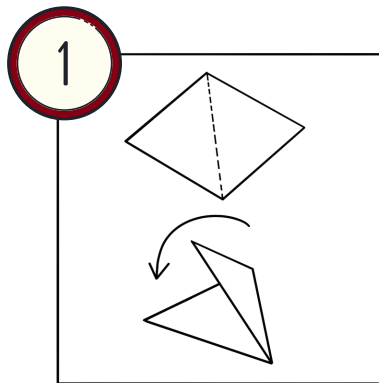


**GLUE EACH LEAF ONE BY ONE IN ONE DIRECTION.**

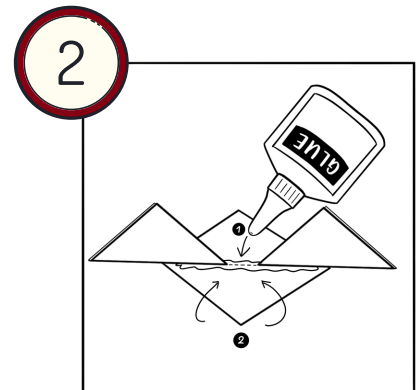


**ONCE IT REACHES A LENGTH LONG ENOUGH TO BE WRAPPED AROUND YOUR HEAD, GLUE THE EDGES TOGETHER. YOU CAN MAKE THIS CROWN WITH ANY SHAPE!**

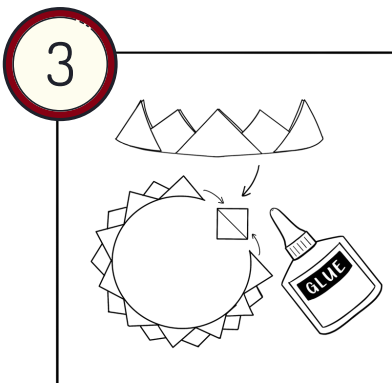
**SHARP-EDGED CROWN WITH PERFECT SQUARES**



**FOLD THE PERFECT SQUARES INTO TRIANGLES BUT DO NOT GLUE THE FOLDS TOGETHER.**



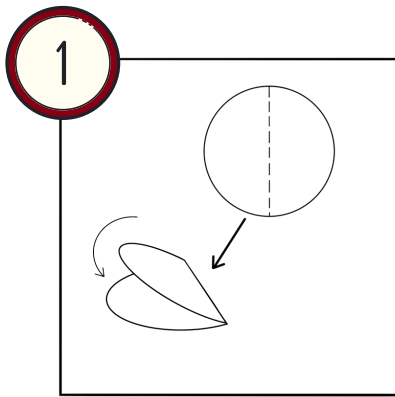
**PLACE 2 TRIANGLES SIDE BY SIDE AND ONE TRIANGLE IN THE MIDDLE FOLLOWING THE PICTORIAL GUIDE. THEN, GLUE THE MIDDLE TRIANGLE TOGETHER.**



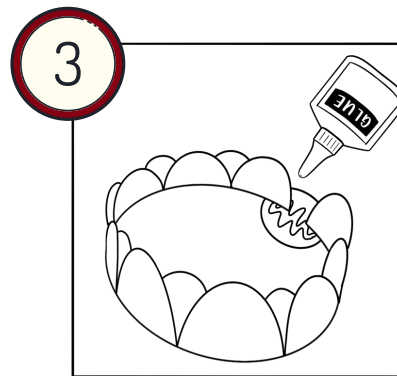
**ONCE IT REACHES THE LENGTH REQUIRED TO WRAP AROUND YOUR HEAD, GLUE THE FOLDS OF THE LAST TRIANGLE TOGETHER AND GLUE THE EDGES TOGETHER.**

**ONCE YOU HAVE 3 TRIANGLES TOGETHER, JUST KEEP ADDING TRIANGLES ONE AFTER ANOTHER IN ONE DIRECTION AND GLUING THE FOLDS TOGETHER ONE BY ONE.**

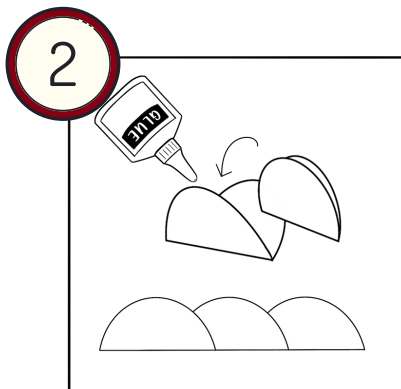
**ROUND-EDGED CROWN  
WITH CIRCLES**



**FOLD THE CIRCLES IN HALF BUT DO NOT GLUE THE FOLDS TOGETHER.**



**ONCE IT REACHES THE LENGTH REQUIRED TO WRAP AROUND YOUR HEAD, GLUE THE EDGES TOGETHER.**



**SIMILAR TO THE SHARP-EDGED CROWN, PLACE 2 HALF CIRCLES SIDE BY SIDE AND 1 HALF CIRCLE IN THE MIDDLE FOLLOWING THE PICTORIAL GUIDE.**

**GLUE THE MIDDLE HALF CIRCLE TOGETHER.**

**ONCE YOU HAVE 3 HALF CIRCLES TOGETHER, JUST KEEP ADDING HALF CIRCLES ONE AFTER ANOTHER IN ONE DIRECTION AND GLUING THE FOLDS TOGETHER ONE BY ONE.**