

**Laplitec**<sup>®</sup>  
Prestigious Italian Surface

**Inspired  
by nature**  
engineered  
for life

## INDEX

interior	02
exterior	04
Lapitec plus	06
Bio-Care technology	07
FOSSIL	08
VESUVIO	10
SATIN	12
LUX	14
applications	16
technical specifications	18
colour options	20

# The perfect example of Italian style.

**Lapitec**<sup>®</sup> is an innovative “full bodied” sintered stone. Available in large format slabs, it unites aesthetic design appeal and the superior mechanical and physical properties of porcelain with the elegance, workability, colours and typical finishes of natural stone.

**Lapitec**<sup>®</sup> is the ideal solution for architecture and design. It's Italian heritage portrays powerful contemporary design as well as a more classic appeal, overcoming structural and stylistic constraints and meeting the aesthetic sensitivity of designers.



# interior

## “FULL BODIED” EXCELLENCE

The material's technical properties and its inherent ability to be easily worked make **Lapitec**® the ideal solution for kitchen worktops, wall cladding, flooring, stairs and fireplaces. By combining the full potential of porcelain material with the colours and finishes typical of natural stone, **Lapitec**® is capable of standing out in its environment as well as providing a harmony with natural surroundings.



# exterior

THE PRODUCT ARCHITECTURE HAS BEEN WAITING FOR

Eternal and insensitive to weather and atmospheric conditions, **Lapitec**<sup>®</sup> effectively combines physical and mechanical strength with unequalled aesthetic excellence. These characteristics alongside its lightness and strength, allow the material to be used for external cladding and in both ventilated and continuous façades.

# 1. It is XXL

**Lapitec**<sup>®</sup> is produced in slabs measuring 3365x1500 mm and with calibrated thicknesses of 12, 20 or 30 mm. With 5,05 m<sup>2</sup> per slab, **Lapitec**<sup>®</sup> is the biggest sintered stone available on the market.

# 2. It is versatile

**Lapitec**<sup>®</sup> provides the most suitable and diverse solutions for construction and furnishing, with the dimensions required by designers. Being a “full bodied” material it is easy to work and can be utilized in countless applications: from internal and external cladding to pavements, from kitchen tops to ventilated façades.

# 3. It is clean

**Lapitec**<sup>®</sup> is non porous and therefore resistant to staining, mould and bacteria. **Lapitec**<sup>®</sup>'s resistance to these factors means it is easily cleaned.

# 4. It is eternal

**Lapitec**<sup>®</sup> is a product that is long lasting and completely weather proof. Every slab is resistant to acids, alkalis, deep abrasions, fire, frost and is unaffected by UV rays. It is also resistant to graffiti.

# 5. It is natural

**Lapitec**<sup>®</sup> is produced with maximum respect for both people and the environment. It is completely inert, containing no resins or petroleum derivatives.

# plus



INDOOR AND OUTDOOR  
UV STABLE – NO FADING



SCRATCH RESISTANT



ACID AND ALKALI  
RESISTANT



NON-POROUS  
AND STAIN RESISTANT



ANTIBACTERIAL



HEAT-RESISTANT

## BIO-CARE, CUTTING EDGE TECHNOLOGY FOR TIMELESS STYLE

The Bio-Care technology gives **Lapitec**<sup>®</sup> the ability to breakdown and to wash away the organic atmospheric particles which deposit on the surface with a bactericidal effect: this result is obtained by incorporating a special form of Titanium dioxide (TiO<sub>2</sub>) during the **Lapitec**<sup>®</sup> production. Titanium dioxide is a catalyst which degrades organic matter through oxidation thanks to the reaction to natural sunlight or artificial lighting (photocatalysis). Furthermore, it gives **Lapitec**<sup>®</sup> hydrophilic properties promoting a washing effect to remove the polluting particles from the surface.

This important feature allows us to define the surfaces of the **Lapitec**<sup>®</sup> as “self-cleaning” and to consider it the perfect choice for locations where you have to guarantee a high standard of cleanliness and hygiene with anti-polluting and self-cleaning properties.

# fossil

## FOSSIL: MATERIAL BEAUTY THAT DEFIES TIME

A coarser textured surface finish with a 'roughness' similar to the split face or flamed surface of natural of natural stone. "FOSSIL" is the ideal choice for both indoor and outdoor cladding and for anti-slip flooring requirements.

# ve su vio

VESUVIO:  
THE STRENGTH AND VITALITY OF VOLCANIC MAGMA

A tactile and smooth yet finely textured surface which provides anti slip properties.  
"VESUVIO" is the ideal choice for both indoor and outdoor cladding and for commercial and residential flooring.



# sa tin

SATIN:  
SOFT TO THE TOUCH AND ELEGANT AS SILK

“SATIN” is easy to clean thanks to the silky sheen. “SATIN” is the ideal choice for kitchen worktops and countertops, indoor and outdoor cladding and for commercial and residential flooring.

# lux

LUX:  
A NEW MEANING OF LUMINOSITY

The **Lapitec**® slabs in our “LUX” collection have a highly reflective polished finish radiating luminosity. “LUX” is the ideal choice for kitchen worktops, countertops, indoor and outdoor cladding.



# applications



## CLADDING APPLICATIONS

**Lapitec®** is the ideal solution for internal and external cladding requirements for both new and old buildings regardless of their size and is an "excellent" alternative to the more classic natural stone, glass, fiber cement and aluminium cladding products. Thanks to its improved resistance to flexing and its lightweight **Lapitec®** is perfect for ventilated façades as well as kitchen worktops, countertops and large suspended floors. **Lapitec®** lasts the effects of time and weather, is impact resistant and completely insensitive to UV rays and acid rain.

## BATHROOMS

**Lapitec®**'s surface is non porous, it does not absorb nor stain, it is hygienic and resistant to mould and bacteria. Additionally, it is easily cleaned with warm water and a cloth, making it ideal to be used for bathroom surfaces, showers, paving and walls.

## KITCHENS

**Lapitec®** is the ultimate solution for domestic and commercial kitchen tops. It's surface is non porous, is stain resistant, hygienic, easy to clean and has a brightness that exceeds that of gloss lacquer in purity. Thanks to its resistance and great workability it can be used for cabinets and drawers in the kitchen, without the need of supporting structures.

## SWIMMING POOLS

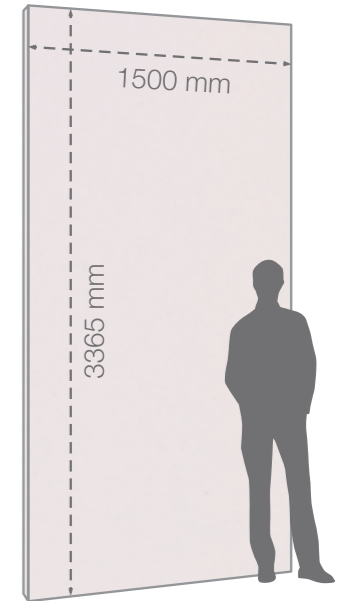
**Lapitec®** is particularly suited for luxury paving or where a stone material is required, with both antislip characteristics and resistance to heat and stains, exactly what is needed for paving and cladding pools and spas. In addition **Lapitec®** is easy to clean and entirely impervious to chromatic alterations.





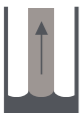
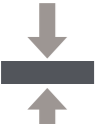

## PAVING








Thanks to its improved flexibility and 3 thickness options, **Lapitec®** is perfect for all types of paving including large format suspended floors.



# technical specifications

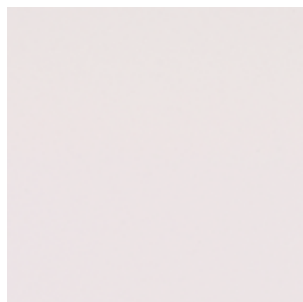


TECHNICAL SPECIFICATIONS	STANDARDS	TEST RESULT
 Size	EN 14617-16	1500 x 3365 mm
 Thickness	EN 14617-16	12 – 20 – 30 mm
 Specific weight	EN 14617-1	2,4 kg/dm <sup>3</sup>
 Flexural strenght	EN 14617-2	53 N/mm <sup>2</sup>
 Water absorption	EN 14617-1	0,1%
 Resistance to compression	ASTM C773	230-250 N/mm <sup>2</sup>
 Impact resistance	EN 14617-9	3,3 Joule sample: 20 mm thick

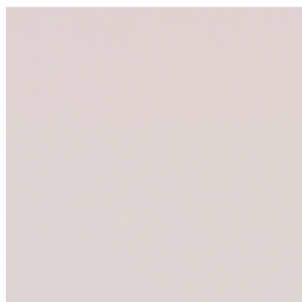
TECHNICAL SPECIFICATIONS	STANDARDS	TEST RESULT
 Deep abrasion resistance	EN 14617-4	25,5 mm
 Frost resistance	EN 14617-5	Resistant
 Fire reaction	EN 13501-1	A1
 Resistance to acids and bases	EN 14617-10	C4 - Resistant
 Colour resistance to light	DIN 51094	No change of colours
 Coefficient of linear thermal expansion	EN 14617-11	$6,3 \times 10^{-6} \text{ } ^\circ\text{C}^{-1}$
 Thermal conductivity	EN ISO 10456	1,3 W /m · °K

# colour options

\*ONLY AVAILABLE FOR THE SATIN AND LUX COLLECTIONS



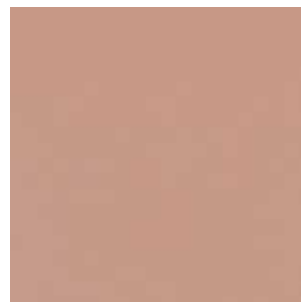
BIANCO POLARE



BIANCO CREMA



AVORIO



SAHARA



GRIGIO CEMENTO



GRIGIO PIOMBO



NERO ANTRACITE



EBANO



TABACCO



PORFIDO ROSSO



ARABESCATO CORALLO\*



ARABESCATO PERLA\*

Our mission is to create additional value by producing high quality products of unequalled performance, with an innovative contemporary or classic elegance design appeal, facilitated by our tireless research and development and by using exclusive technologies and know-how. These are the cornerstones on which Lapitec S.p.A has built, not only its “mission,” but also the first manufacturing site in the world which produces **Lapitec®**.

The technological partnership with **Breton S.p.A.**, the world leader in the production of machines and plants for processing stone and natural engineered stone products and that developed both the exclusive technology and plant - has allowed us to create an innovative, project ready, ceramic based product with the most desired technical properties and design appeal.

**Lapitec S.p.A.**

Via Bassanese 6 | 31050 Veduggio | Treviso | Italy

T. +39 0423 700239 | F. +39 0423 709540

info@lapitec.it | [lapitec.com](http://lapitec.com)