



OUR VISION 2030

A DOOR OF HOPE



King's Church[®]
Eastbourne

**“And there I will give her back her vineyards and make
the Valley of Achor a door of hope.”**

HOSEA 2:15

The gospel is an incredible account of how God searches out the lost and broken people of this world — people locked in the kingdom of darkness — and breaks the power of sin and death over their lives. He brings them into the Kingdom of God, back into relationship with himself and gives them a hope and future. The first thing the gospel does is reconcile us to God.

To be reconciled with God is to walk with him and talk with him; to be brought back into his presence, into relationship. It's to pray without hindrance, to know that you're totally accepted and fully known. To be loved and declared righteous by the God of the Universe is a hope that shines like a light in the darkness. And we believe it's through *hope* that God is drawing people to himself, in Eastbourne and beyond.

We believe as a church we have been called to open doors of hope to those in our community. Doors for the light of the gospel to shine out, doors for the lost to walk through. Many doors have already been opened, and are already active, but we have three that we would love to widen and strengthen in the coming years.

Yet as important as each doorway is, we know it's just the beginning. As we become reconciled with God we realise his plans don't end there. He doesn't just want us to

walk with him individually, but with each other as brothers and sisters. His plan is to bring down all the walls of division that separate, to bring about a church that is united and diverse.

As Galatians 3:28 says:

*“There is no longer Jew or Greek,
there is no longer slave or free, there
is no longer male and female; for all
of you are one in Christ Jesus.”*

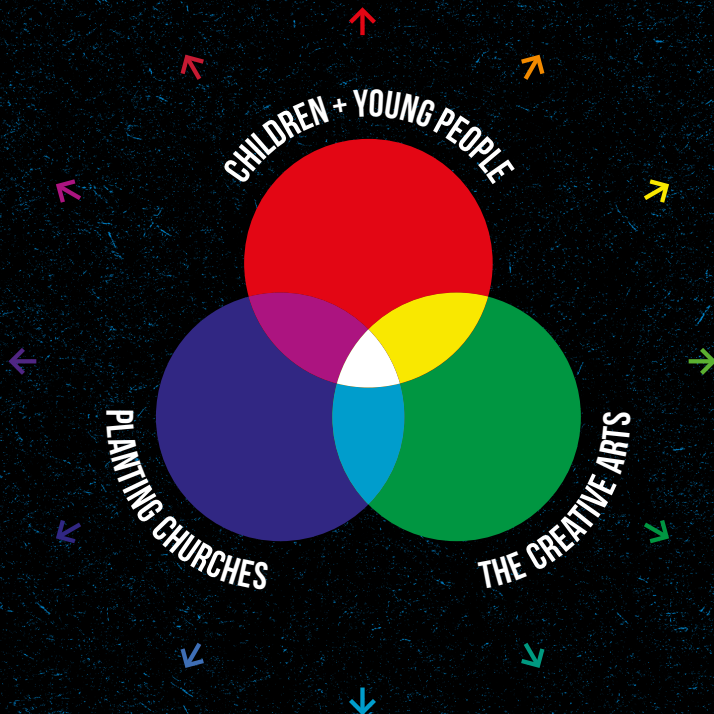
The gospel brings the hope of reconciliation of all kinds; families reconciled with one other, generations reconciled with each other and reconciliation between people from all countries, cultures and backgrounds.

It's Jesus that brings us all together, and diversity with genuine unity sends a powerful message: everyone is included — the gospel is for everyone!

Our Mission —

King's Church exists to proclaim the gospel of Jesus in action and in words, to build a community of worshippers today—and for future generations. Our church has grown from meeting in homes into a warehouse, we have planted churches, built a school and transformed thousands of lives across the world. Through our daily lives shaped by Jesus, we will bring life to everyone, creating kingdom culture in Eastbourne and beyond.

By 2030 we will have celebrated our 40th birthday. As we look towards the next 40 years, we feel called specifically to build a reconciled church and open doors of hope through:



These areas overlap and bleed into each other and may, in the end, touch every area of church life.

1. CHILDREN & YOUNG PEOPLE

We have seen the lives of many children and young people transformed by the grace of God and the work of the Holy Spirit since our church was born in 1988. Thousands of lives have been impacted as we have reached out into schools, got creative and engaged in all kinds of kids and youth work, right from the early days at Ratton School.

The world is a tough place for our children and young people to navigate and we believe that God holds the answers in how he has called us to live and to act.

We are committed to protecting, helping and teaching young people as they grow up today. In the same way we see Paul equip Timothy in his pastoral letters, we need to be sharing our experience and wisdom with children and young people and to be committed to them.

We long for people from all generations to help equip our children and young people, so that by the time they are 18 they are robust in their faith able to make a difference wherever they are.

Aims

Our aim is to double our current reach and see 1000 different people every month engaging in family team activities. This will be done by continuing to disciple and teach our young people to reach the world around them. In addition we will be increasing our midweek activities such as extra focus sessions, alongside more children's, youth events and clubs.



2. THE CREATIVE ARTS

Music and the other creative arts are some of the primary ways that we all engage with each other, and they transcend race, class, age and language.

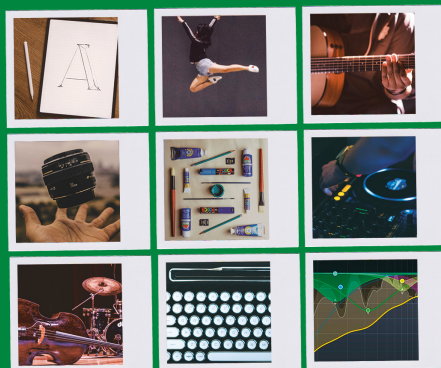
One key area we will actively continue to invest in is by worshipping God and discipling people through the creative arts.



A key area of modern life is the use of digital technology in connecting people and shaping their views. We have seen many people engage with our online meetings and teaching over the past few years and many people who are unable to attend church in person stay connected with our gatherings online.

We want to use every channel available to us to spread the good news of the gospel, explore all the opportunities we have through creative media and technology, and serve the wider community.

There are people all over the world searching for answers and we need to make the most of living in an age where at the press of a button we can help them to know the God whose image they were created in. We all have creativity built into our DNA by the creator God and we all have capacity to engage creatively in our worship of him.



Aims

We aim to build upon our historic reputation as a church that encourages creative people and produces high quality creative art. We hope to increase this reputation exponentially by equipping a diverse and varied group of people to develop and use their gifts which include music, photography, videography, painting, drama and dance.



3. **PLANTING CHURCHES**

In 2010 we planted Life Church in Seaford, which is now thriving and has recently bought its own building.

We planted Grace Community Church in the harbour in Eastbourne in 2023 and are now seeing it grow and flourish as a core group of people have chosen to call it the place that they

gather and grow in and then go and spread the gospel, making disciples.

We have also seen Thursday Church become a key part of our lives together where again a core group of people have found it to be the place they gather with one another to worship God and share their lives. Additionally in recent



LIFE CHURCH SEAFORD



GRACE COMMUNITY CHURCH



THURSDAYS



SUNDAY PM

months we have started our regular Sunday evening meeting which has become a place for people to worship and grow together.

between 2013 and 2021 and feel that by 2030 we want to have planted a church in the town centre that will continue to flourish for years to come.

Aims

Along with our current model of Sunday morning, Thursday morning, Sunday evening meetings and planting Grace Community Church, God willing our aim is to plant churches in the Polegate/Willingdon area and into the town centre. We had a great start in serving the central community in town with our Centro site

Finally at the King's Centre we aim to build Sunday into a day where 'you're never late to church'. Our aim is to continue to add to Sunday in a variety of ways, from social activities throughout the building, opportunities to eat together, study God's word or sing and pray together with no need to watch the clock.

FINANCES



The King's Centre has served us incredibly well since we bought it in 1998, and 2024 saw the start of the most extensive renovation and improvement that it has had since being built over 50 years ago. With the new solar panels in the roof and increased insulation we have begun to future-proof our home for the next 40 years, reducing our bills and becoming more environmentally friendly.

This is down to the generosity of each person in the church who serves tirelessly and gives generously into everything we have been called to do together. The latest renovation has come at significant financial cost, and the trust of every person at King's is testimony to how God builds his church through people.

We would love to pay the mortgage off early if we can, which will be approximately £500,000 over the next five years. Over the decades so far, through the generosity of the church in regular giving and gift days we have been able to do so much together. As we approach our 40th year it would be great to begin once again, mortgage free.

To achieve this together it will require one-off gifts and/or annual gifts days each spring of £100,000. Could you consider giving towards this in the coming years?

Planting churches and investing in the next generation is costly. **If 300 of us were to increase our giving annually by at least £10 per month it would bring in an extra £36,000 each year (£180,000 in total by 2030).** This would help us to resource work into our children and young people, release creative content, operate the church more freely and invest financially as we plant churches. It's a big vision to reconcile all things, so let's remember we have a big God.

Everything we've written here aims to help facilitate our desire to worship God, honour him with everything that we do and to make the doors of our building, our homes and our lives a 'door of hope' for people to walk through and find life.

If you would like to pledge your financial support for increased regular giving or make a one-off donation, use the tear-off slip attached to the right.

WAYS TO GIVE



Scan the QR code to give online now by debit or credit card.

You can also 'Gift Aid' your donation if you are a UK taxpayer, adding up 25% to your giving.

Please give responsibly and without getting into debt.

www.kings.church/hope

Use the giving button to give online.

INTERNET BANKING

Account name: Frontiers Charitable Trust **Account no:** 00639745

Sort Code: 202791 Please use the reference "**HOPE2030**"

GIVING ENVELOPES

You can use the giving envelopes to give via cash, cheque, debit or credit card. Please mark "**HOPE2030**" somewhere on your giving form.





WE LOVE THE BIBLE
WE LOVE GOD'S SPIRIT
WE LOVE WORSHIP
WE LOVE PRAYER
WE LOVE COMMUNITY
WE LOVE DISCIPLESHIP
WE LOVE MISSION
WE LOVE STEWARDSHIP
WE LOVE DIVERSITY.

At King's our purpose is to proclaim the gospel and make disciples.
We believe this is best expressed through the things that we love, before
we tell people the things that we do.

Read up on our values in detail in our booklet online at

www.kings.church/welove

THE BIBLE: Living a life of faith and obedience based on and subject to the Bible — God's Word.

COMMUNITY: Demonstrating the love of God in authentic Christian life together.

GOD'S SPIRIT: Walking daily in the power and presence of the Holy Spirit.

DISCIPLESHIP: Pursuing Christ-like maturity and ministry in ourselves and in others.

WORSHIP: Expressing a life of intimacy with God by worshipping him in Spirit and in truth.

MISSION: Sharing the good news of Jesus in actions and words.

PRAYER: Developing a lifestyle of prayer to fuel all we do as followers of Jesus.

STEWARDSHIP: Managing our resources wisely; giving generously of our time, talents and treasure.

DIVERSITY: A reconciled church, united as family, full of unexpected friendships.

NEW TO KING'S?

If you've come across this booklet and are new to King's, we would love to help you get connected and make our church your home. If you have any questions or would like to know more about joining the church, life groups, serving, or anything else please do get in touch.

www.kings.church/new

CONTACT US

On Sunday mornings The Connect Point is a great place to ask any questions and for help with signing up to groups and events. During the week you can also contact the church office Monday to Friday, 9am to 5pm.

 01323 521125  info@kings.church  www.kings.church/contact

 King's Centre, 27 Edison Road, Eastbourne, East Sussex, BN23 6PT

Socials



@KingsEastbourne



@Kings.Church.E.S



@KingsChurchEastbourne



@KingsChurchSE

**LOVE JESUS
LOVE EASTBOURNE
LOVE OUR WORLD**



www.kings.church
