

In this factfile:

- Explore London
- Explore Kings London
- School facilities
- Local map
- Courses available
- Accommodation options
- **School life and community**
- Activities and excursions
- Clubs and societies
- Enrichment opportunities

Kings London

Choose Kings London

- 1 One of the world's most iconic cities
- 2 Suburban location ensuring safe study environment
- 3 Many top UK universities in London



Explore London

Location factfile: Kings London

As a modern and forward-thinking city, London is vibrant and fast-paced, yet it still retains a great sense of history and tradition. Here, you can find something new to do every day.



Key facts:

Location: South East England

Population: 8.1 million

Nearest airports: Gatwick Airport, Heathrow Airport

Nearest cities: Oxford, Cambridge, Brighton

Journey time to central London: 20 minutes

London highlights



Covent Garden

Visit Covent Garden for boutique shops and an elegant, restaurant-lined piazza. You can often see street performers and musicians busking here.



London Museums

London is home to a huge number of museums, often housed in amazing historical buildings. Popular options include the Natural History Museum, and the Victoria and Albert Museum.



The London Eye

Take a trip on this 135-metre rotating wheel on the bank of the River Thames for amazing 360° views across the UK capital.



Buckingham Palace

No visit to London would be complete without a trip to the official home of the Queen, Buckingham Palace.



London Markets

Markets have been an important part of London life for centuries. You can still find them taking place every week around the city, selling everything from flowers and fashion, to antiques and street food.

Food and drink

There are **thousands of restaurants, cafes, bars and pubs** in London — it has one of the most diverse dining scenes in the world, with options to suit all budgets and tastes.

There are a **huge range of international cuisines** on offer. Head to areas such as China Town or Brick Lane for some of the most authentic options.

Visit one of London's many **traditional British pubs**, some of which have been open since the 1700s!

For information about eating and drinking in Brighton, have a look at these websites:

- [timeout.com/london/restaurants](https://www.timeout.com/london/restaurants)
- [londonist.com/category/food-and-drink](https://www.londonist.com/category/food-and-drink)
- [beckenham.net/food.asp?page=restaurants](https://www.beckenham.net/food.asp?page=restaurants)
- [visitlondon.com/things-to-do/food-and-drink](https://www.visitlondon.com/things-to-do/food-and-drink)



Entertainment, arts and culture

London has an endless array of opportunities when it comes to arts, culture and entertainment.

Visit one of London's **iconic art galleries**, many of which offer free entrance. World-renowned artists often have exhibitions running at galleries such as the **Tate Modern** or **Royal Academy**.

Head to a **theatre production** in the West End. Plays and musicals across all genres are available every day.

There are many **cinemas** around London showing everything from mainstream blockbusters to art house and international films, often in **unusual locations**.

Attend one of **London's many festivals**, taking place in parks and other venues across the city year-round celebrating music, food, arts and much more.



Sports and leisure

Visit the **Spa Leisure Centre**, right across the road from the school. This public facility includes a swimming pool and a variety of fitness equipment.

Tennis — there are 6 public courts in local parks close to the school which are available to use free of charge.

Football — there are many indoor and outdoor football facilities available for public use around Beckenham and Bromley, as well as local teams to join. London is also home to **Premier League teams** such as **Tottenham Hotspur, Arsenal, and Chelsea**.

For information about sports and leisure options near to Kings London, have a look at these websites:

- [The Spa Beckenham](#) (local leisure centre)
- [Goals Football](#) (local football pitches)
- [Breeze Yoga](#) (local yoga studio)

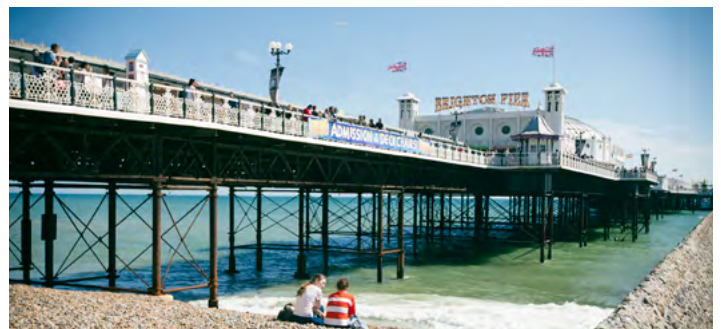


Day trips and excursions

Brighton — visit the vibrant and creative coastal city of Brighton and Hove, a 50-minute train journey from central London.

Greenwich — less than an hour from the school, Greenwich is home to many attractions including the Meridian Line and the Royal Observatory, as well as Greenwich Market and Greenwich Park.

Windsor and Windsor Castle — this picturesque town on the River Thames is home to Windsor Castle, a residence of the British Royal Family.



Budget for your stay in London

You will need to pay for some of the activities and excursions described here. To find out more go to [our website](#) or follow this **QR code**



Explore Kings London

Kings London located in the affluent and leafy suburb of Beckenham, South London.

The main school building consists of two big detached houses linked together by a modern build with floor to ceiling glass, which houses the reception area and cafeteria, and connects the main teaching blocks.

Students also benefit from the lovely school gardens.

Our annexe building, two minutes' walk away, has a large Computer Learning Centre and bright classrooms with interactive whiteboards.

School facilities

Bright classrooms

Interactive whiteboards

Art Studio

Computer Learning Centre

Library resources

On-site cafeteria

Outside eating area

Garden area

Wireless internet access

Science labs

Reception and Student Services

Table tennis area

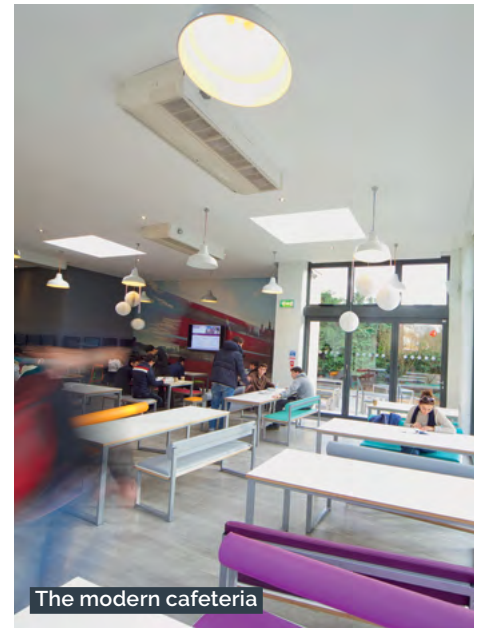
Location factfile: Kings London



The contemporary reception area



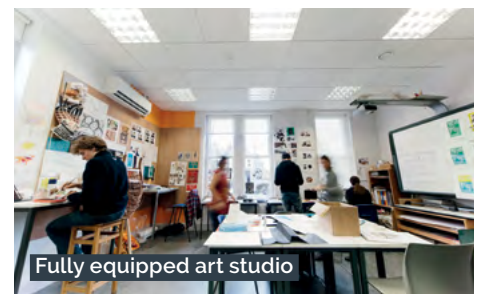
Spacious garden and outside dining



The modern cafeteria



Computer Learning Centre in the annexe building



Fully equipped art studio



Bright and welcoming entrance



School address and contact number

Kings London
25 – 27 Beckenham Road
Beckenham
BR3 4PR

T +44 (0)20 8650 5891

School location

Kings London is located in a safe, green South London suburb called Beckenham.

It is only 20 minutes by train to central London but does not have the noise, expense or uncertainties that city centre living can bring.

The area around the school is dotted with picturesque parks and green spaces, but still offers all the amenities and convenience of urban living.

Local amenities such as shops, cafes, and banks are easily accessible within walking distance from the school.

Courses offered

[General English](#)

[Intensive English](#)

[IELTS Preparation](#)

[Cambridge Exam Preparation \(FCE\)](#)

[Cambridge Exam Preparation \(CAE\)](#)

[English for Law](#)

[English Plus Art and Design](#)

[English Plus Business, Marketing & Finance](#)

[Diploma of General English](#)

[Diploma of Intensive English](#)

Key dates

Kings London is open all year except for the following public holiday dates:

Public Holidays 2023

Monday 2 January
Friday 7 April
Monday 10th April
Monday 1 May
Monday 8 May
Monday 29 May
Monday 28 August

Christmas holiday dates 2023 – 24

25 December 2023 – 7 January 2024
(school reopens 8 January 2024)



Virtual tour and video

[View Kings London virtual tour here](#)

or follow this QR code



Kings London on social media

[Kings London on Facebook](#)

[Kings London on Twitter](#)

[Kings London on Instagram](#)

Who you'll meet

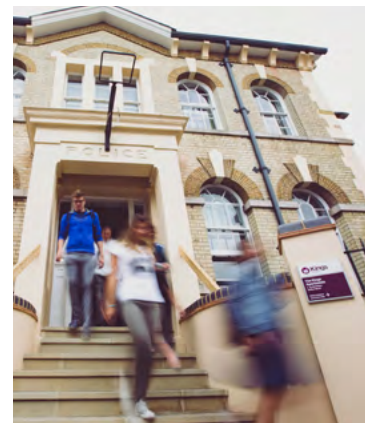


Danny Carroll
Principal

"It's my job to make sure that you have the best possible learning experience. Whether in the classroom, on educational visits, working on special projects or just chatting over a cup of tea, I'm here to help you develop and nurture a sense of curiosity, enthusiasm and satisfaction."

Accommodation options

Location factfile: Kings London



The Kings Apartments — Student Residence

The **Kings Apartments** are located just a 15-minute walk from the school.

Bright and modern bedrooms are offered on a self-catering basis for students aged 18+.

There are also fully-equipped shared kitchen, and communal areas for relaxing.

A range of single and twin rooms with both en suite and shared bathroom options are available.



Homestay

Homestay is a great way to experience day-to-day home life in the UK and practice your English

Every homestay is carefully inspected by our accommodation team and checked on a regular basis

Homestay accommodation offers single rooms with shared bathrooms

Half-board meals (breakfast and dinner 7 days per week) are included in the price

Student Houses

Kings London students can stay in one of our student houses which are located within easy walking distance from the school.

They offer single rooms with shared bathrooms, for students aged 18+.

Student houses are offered on a self-catering basis, with a fully-equipped shared kitchen and communal area.

- [Croydon Road student house](#)
- [Churchfields Road student house](#)
- [Cedars Road student house](#)

Download all London accommodation factsheets and photo galleries here

Visit kings-english.com/london or follow this QR code



School life and community

Take advantage of the wealth of extra-curricular opportunities available at Kings London. These enrichment options are fantastic for both personal and professional development allow you to put your new language skills into practice outside class.

Social programme

Our exciting and varied social programmes offer the opportunity to get involved in just about any activity you wish!

From sports to cultural activities, visits to museums, art galleries, concerts, or even trips to another city or country, your free time will always be full of fun, friendship, and adventure.

Career guidance opportunities

All English language students also have the option to get involved in a range of career guidance opportunities.

This additional support is designed specifically for students who are preparing for their next steps in life, whether that be university progression, preparing to start a new job, or even entering the world of work for the first time.

Example options include – workshops or lectures; one-to-one university counselling; Special Interest Group (SIG) options.

Clubs and societies

There are a wide range of clubs and societies available for all students to join. This is a great opportunity to make friends who have shared interests and develop your language skills within specific contexts or fields. Popular examples in London include:

- Science Club
- Chess Club
- Student Council
- Debating Society
- Book Club
- Spanish Club
- Kings Enterprise



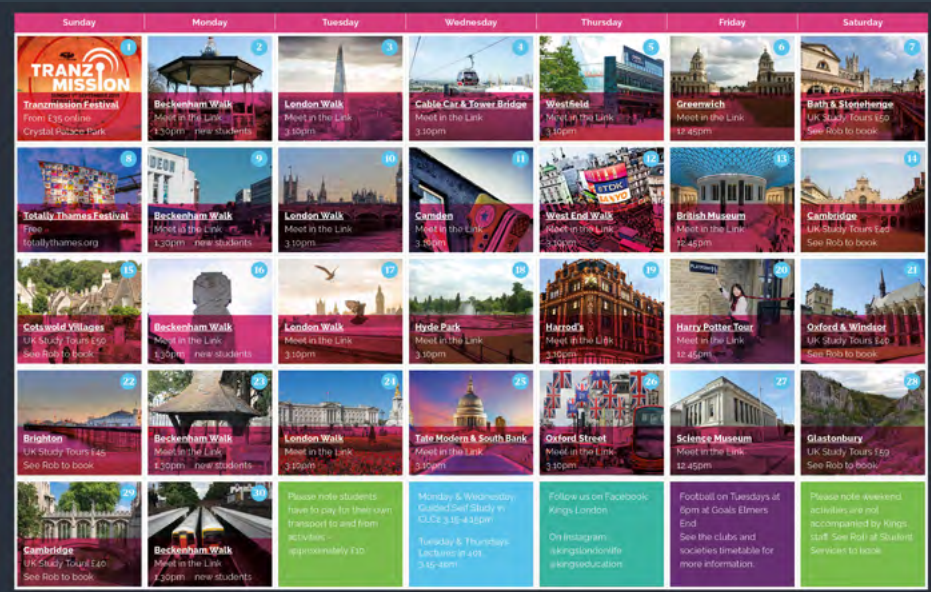
Popular activities include:

- Local walks in Beckenham and London
- Visits to London parks
- Museum visits
- Gallery visits
- Football
- Pilates / yoga
- Weekend full-day trips to other parts of the UK

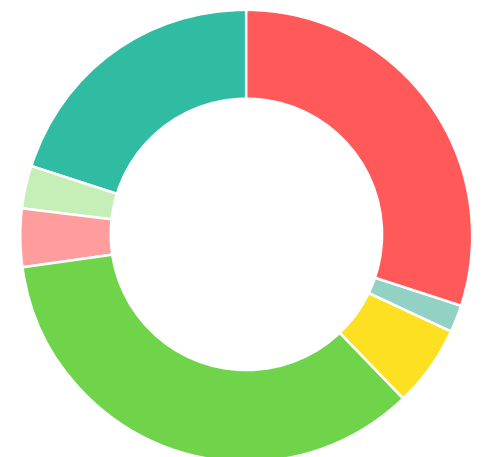


Sample activities calendar

(Click the image below to view current activities calendar)



Nationality statistics



- Western Europe 30%
- Eastern Europe 2%
- Middle East 6%
- Asia 35%
- China/Hong Kong/Macau 4%
- Former Soviet Union 3%
- Americas 20%

DISCLAIMER Please note clubs, societies, lectures and activities are subject to availability of teachers and time of the year.