

CITY CENTER

5 City Place
White Plains, NY 10601



- City Center is located in White Plains, NY and is a mixed-use development with two 35-story apartment and condominium towers. Aside from the parking facilities, there is 600,000 SF of retail, restaurant and theater space.
- The center is anchored by Target, Nordstrom Rack, Burlington, ShopRite, Showcase City Center 15: Cinema de Lux and the White Plains Performing Arts Center.
- The city of White Plains is just 25 miles north of Manhattan – a 35-minute commute by express train, and home to major companies like Disney Publications, IBM, Heineken, and Bloomingdale's.
- This city of 57,000 people sees its population swell to more than 250,000 on an average weekday due to shoppers, visitors and workers. White Plains is also considered one of the wealthiest cities in America: the estimated average household income is over \$108,000.

	3 Mile	5 Mile	7 Mile
2019 Estimated Population	107,225	201,558	413,602
2024 Projected Population	108,492	203,952	417,748
2019 Estimated Households	41,140	73,258	151,129
Average Household Income	\$152,144	\$180,397	\$174,869

LEASING CONTACTS

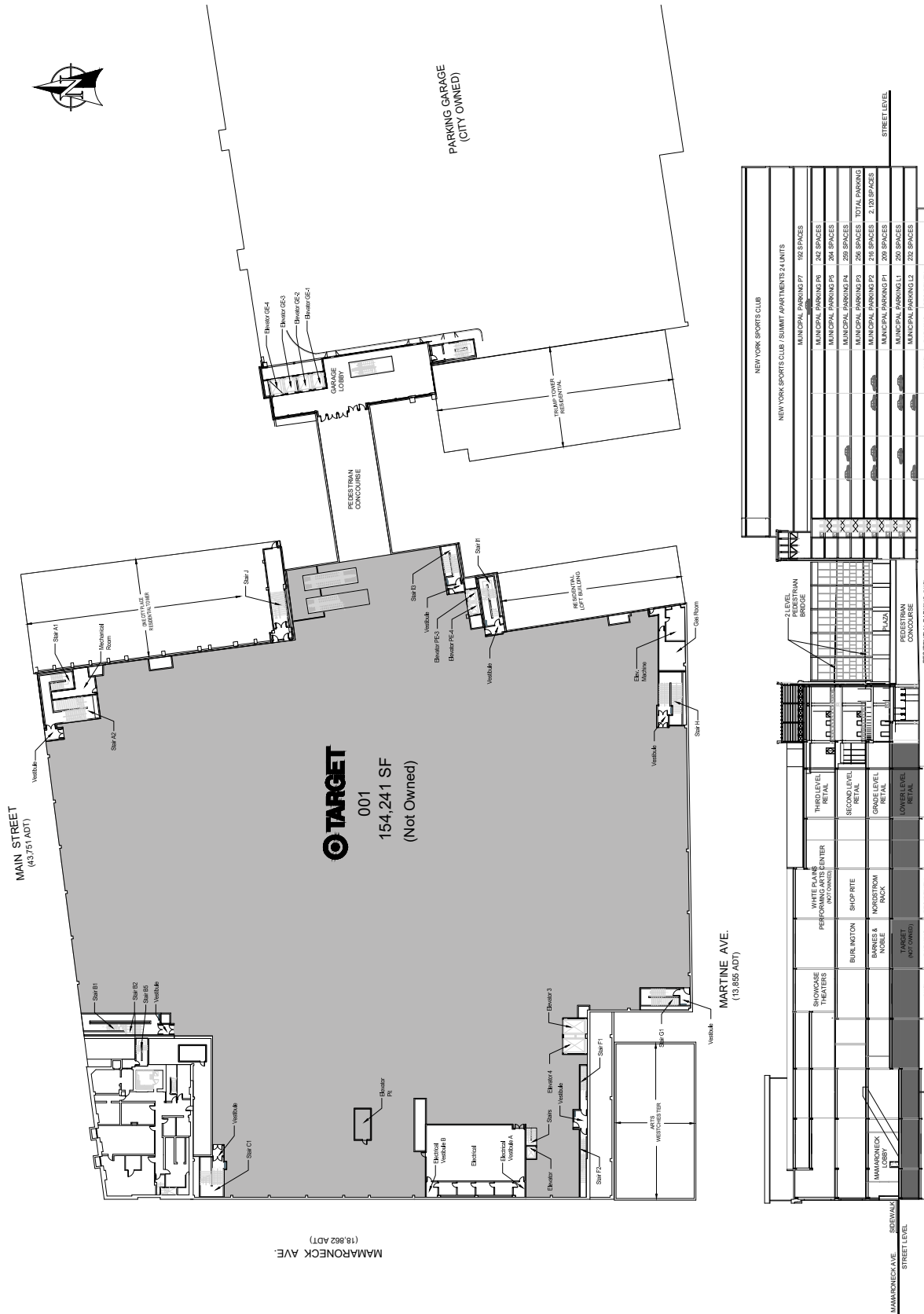
Karly Kilroy
kkilroy@kiterealty.com
214.451.2551

Gregg Poetz
gpoetz@kiterealty.com
317.578.5153

10/16/20

317-577-5600 kiterealty.com

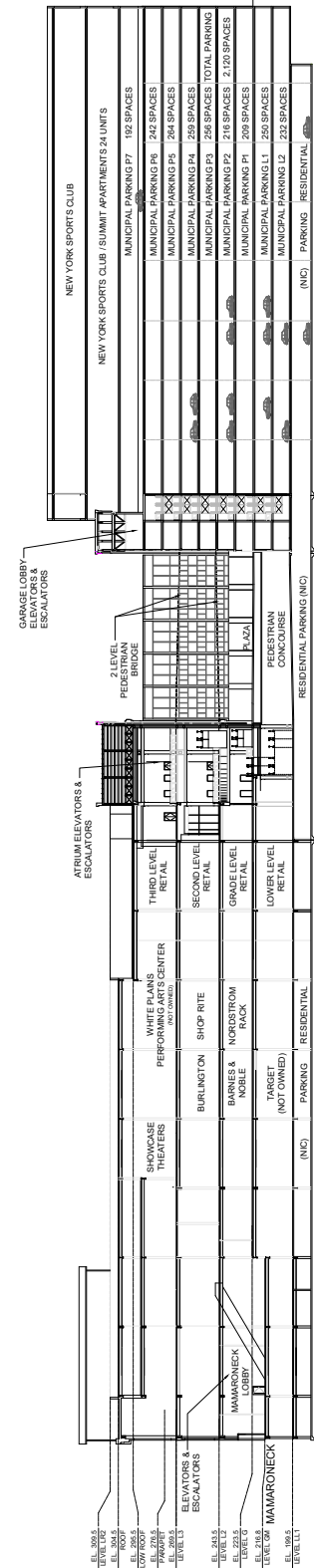
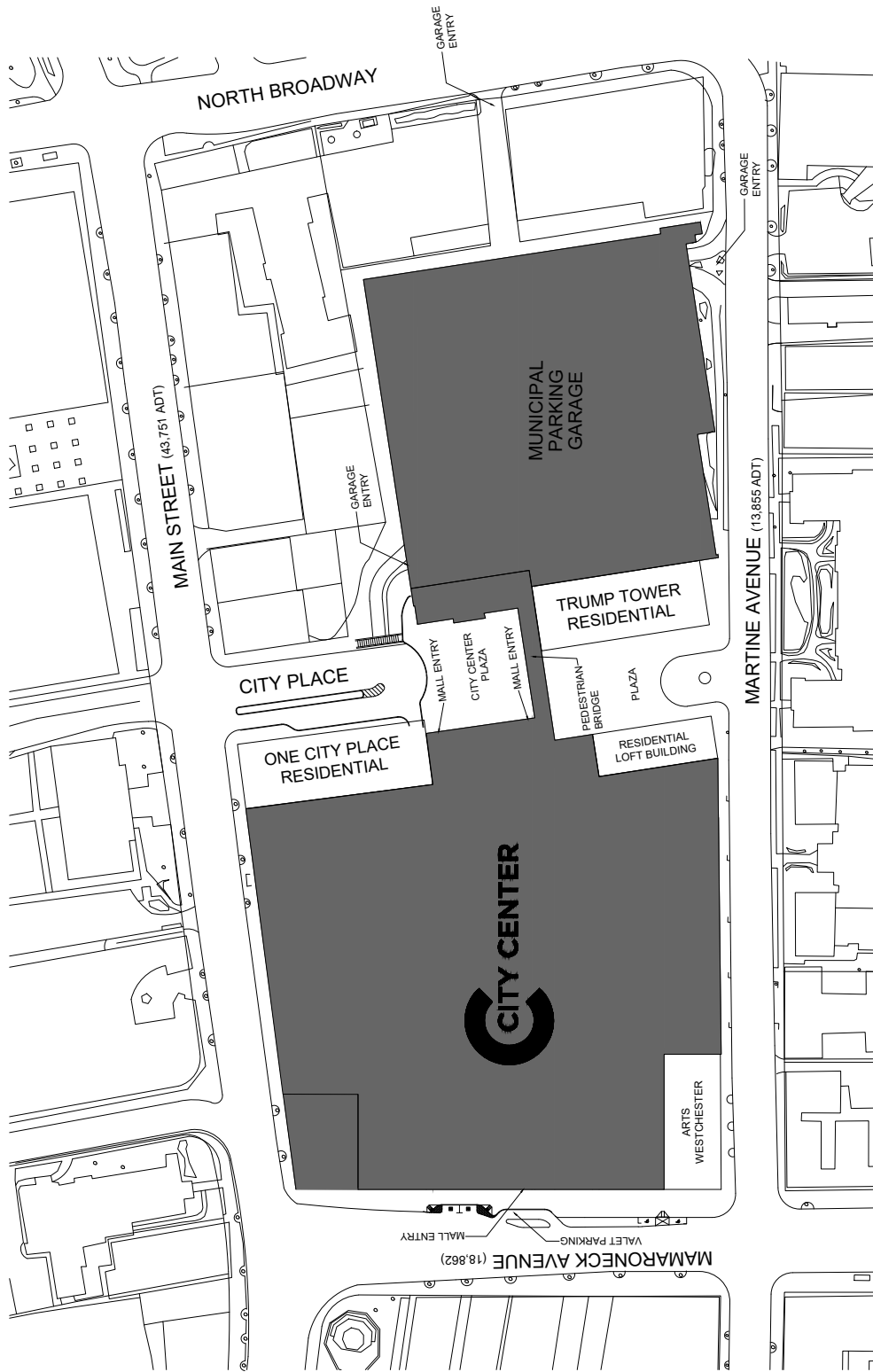




SHEET 2 OF 5

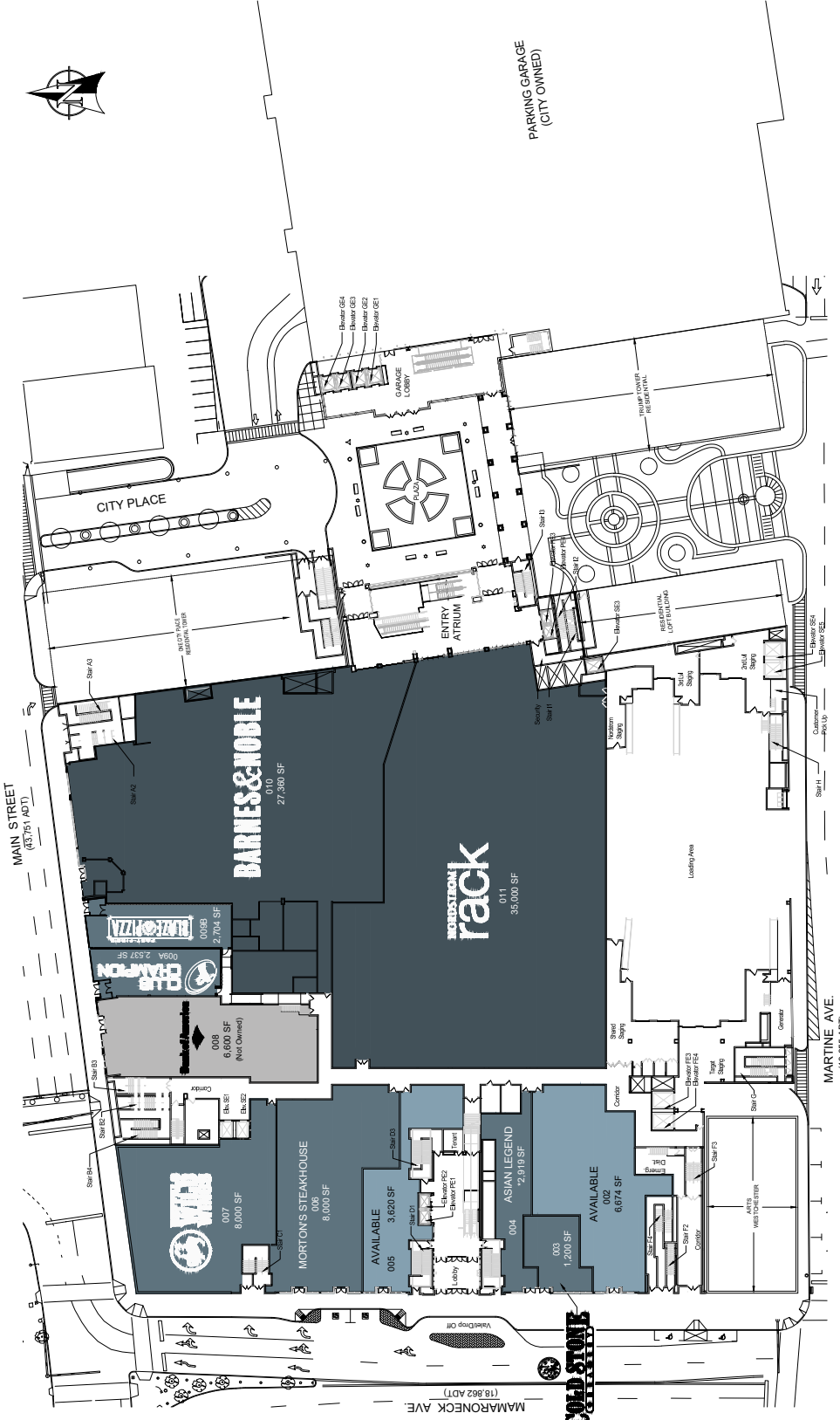
CITY CENTER

5 City Place
White Plains, NY 10601



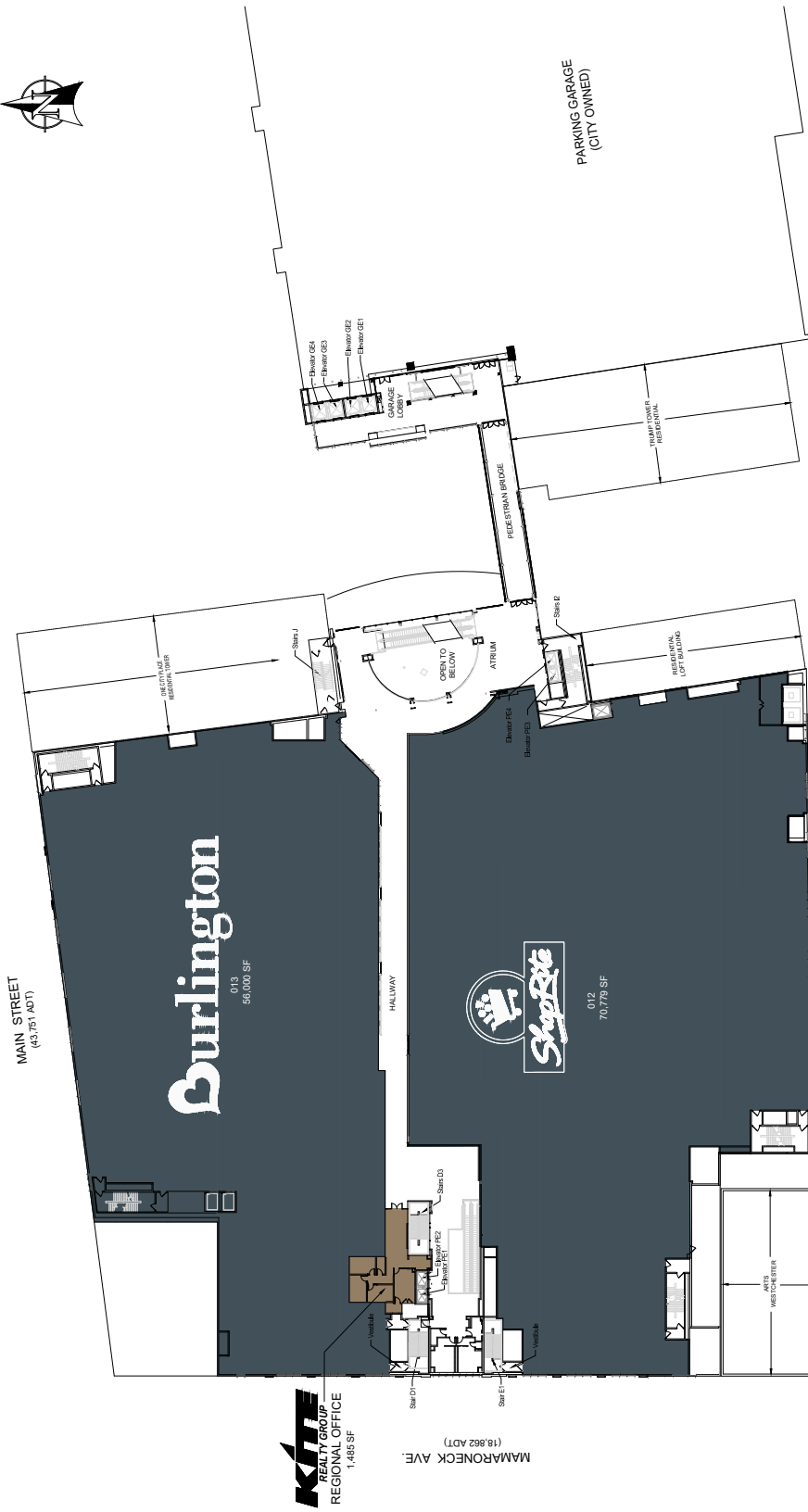
CITY CENTER

5 City Place
White Plains, NY 10601

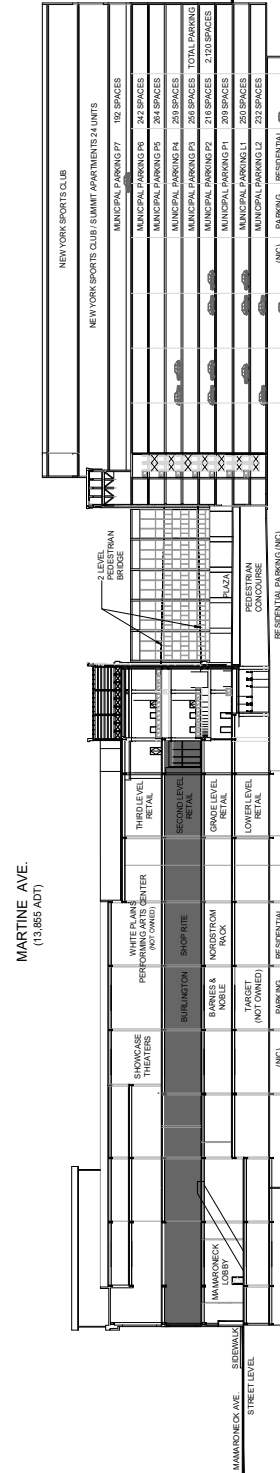


LEVEL	DESCRIPTION	TYPE	SPACES
THIRD LEVEL	RETAIL	RETAIL	242 SPACES
SECOND LEVEL	RETAIL	RETAIL	296 SPACES
GROUND LEVEL	RETAIL	RETAIL	218 SPACES
LOWER LEVEL	RETAIL	RETAIL	208 SPACES
(INC)	PARKING	RESIDENTIAL	232 SPACES
TOTAL PARKING			
210 SPACES			
TOTAL SPACES			
210 SPACES			

SHEET 3 OF 5



MAMARONECK AVE.
(18,862 ADT)



SHEET 4 OF 5

CITY CENTER

5 City Place
White Plains, NY 10601

