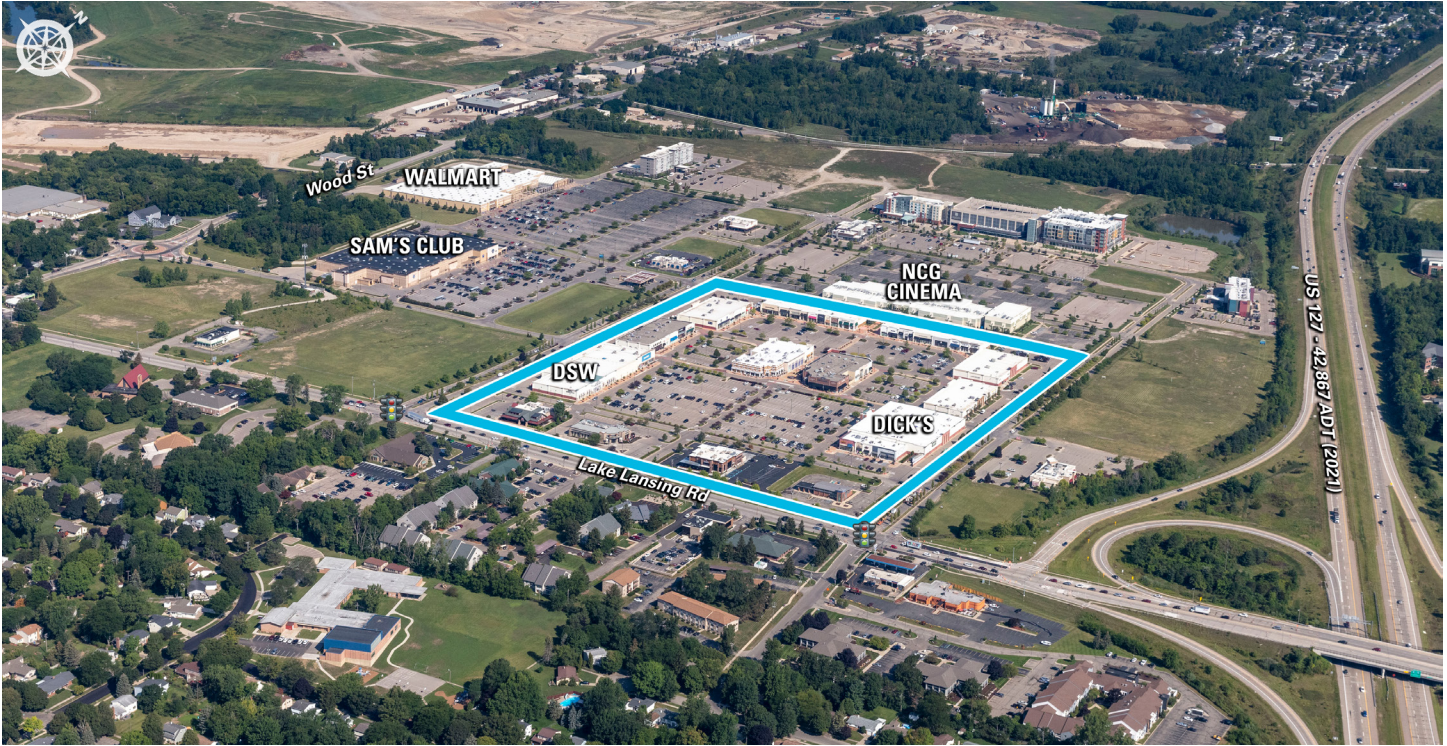


# EASTWOOD TOWNE CENTER

3003 Preyde Boulevard | Lansing, MI 48912



## Eastwood Towne Center

MSA: Lansing, MI | GLA: 307,724

Regional lifestyle destination featuring unmatched collection of premium aspirational brands, services, and popular national dining options. Eastwood offers all of the amenities of a premium fashion mall combined with unparalleled convenience and access. Eastwood Towne Center featured tenants include: Apple, Lululemon, DSW, Pottery Barn, Evereve, and William-Sonoma.

### 3 MILE DEMOGRAPHICS



POPULATION

**76,972**



% POP. GROWTH  
(ANNUAL)

**2.18%**



AVG. HH INCOME

**\$70,303**



MED. HH INCOME

**\$48,564**



HOUSEHOLDS

**32,807**



BACH. DEGREE+

**42.42%**

*\*2023 Demographic Source (PopStats)*

**LEASING CONTACT** - Greg Goldberg - [ggoldberg@kiterealty.com](mailto:ggoldberg@kiterealty.com) - 410.246.5599

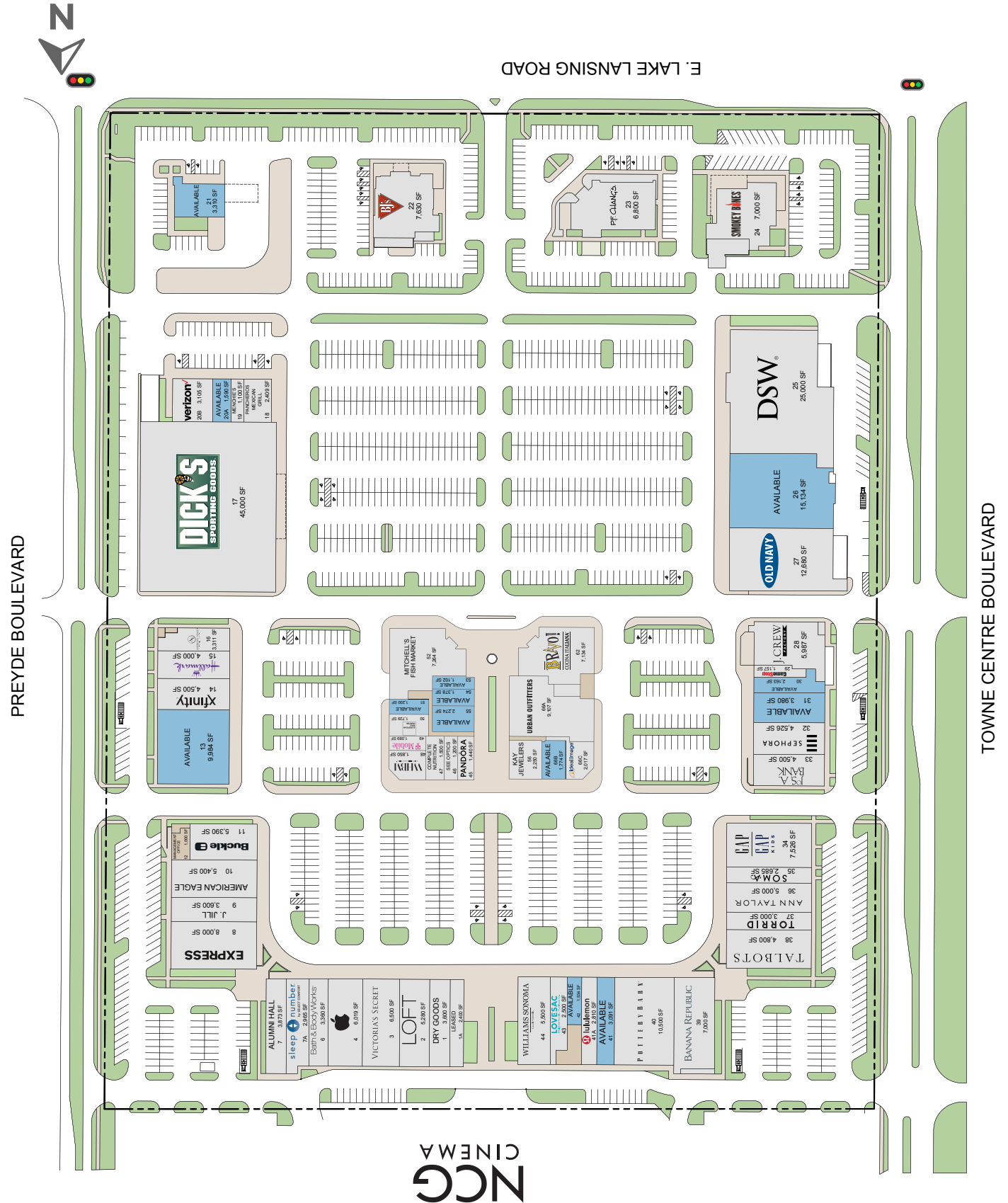


317-577-5600 [kiterealty.com](http://kiterealty.com)

KRG  
LISTED  
NYSE

# EASTWOOD TOWNE CENTER

3003 Preyde Boulevard | Lansing, MI 48912



NGC  
CINEMA



317-577-5600 kiterealty.com

KRG  
LISTED  
NYSE