

GLENDALE TOWN CENTER

6101 North Keystone Avenue
Indianapolis, IN 46220



- Glendale Town Center is located at Keystone Ave between Broad Ripple Ave / 62nd Street and Kessler Boulevard, on the north side of Indianapolis. The center is anchored by Target, Staples, Landmark Theaters, and Lowe's.
- Some of Indianapolis' most exclusive and desirable neighborhoods are located within the Glendale trade area.
- In addition to retail, Glendale also offers community services that attract more than 60,000 people per month for either community services, doctor appointments, classes, events, or movies. Some of these include the Glendale Branch of the Marion County Public Library, School on Wheels, ATI Physical Therapy, and the IU Medical Group.

	3 Mile	5 Mile	7 Mile
2019 Estimated Population	72,319	213,921	425,439
2024 Projected Population	73,664	217,888	438,489
2019 Estimated Households	33,176	94,350	184,201
Average Household Income	\$96,926	\$76,082	\$70,903

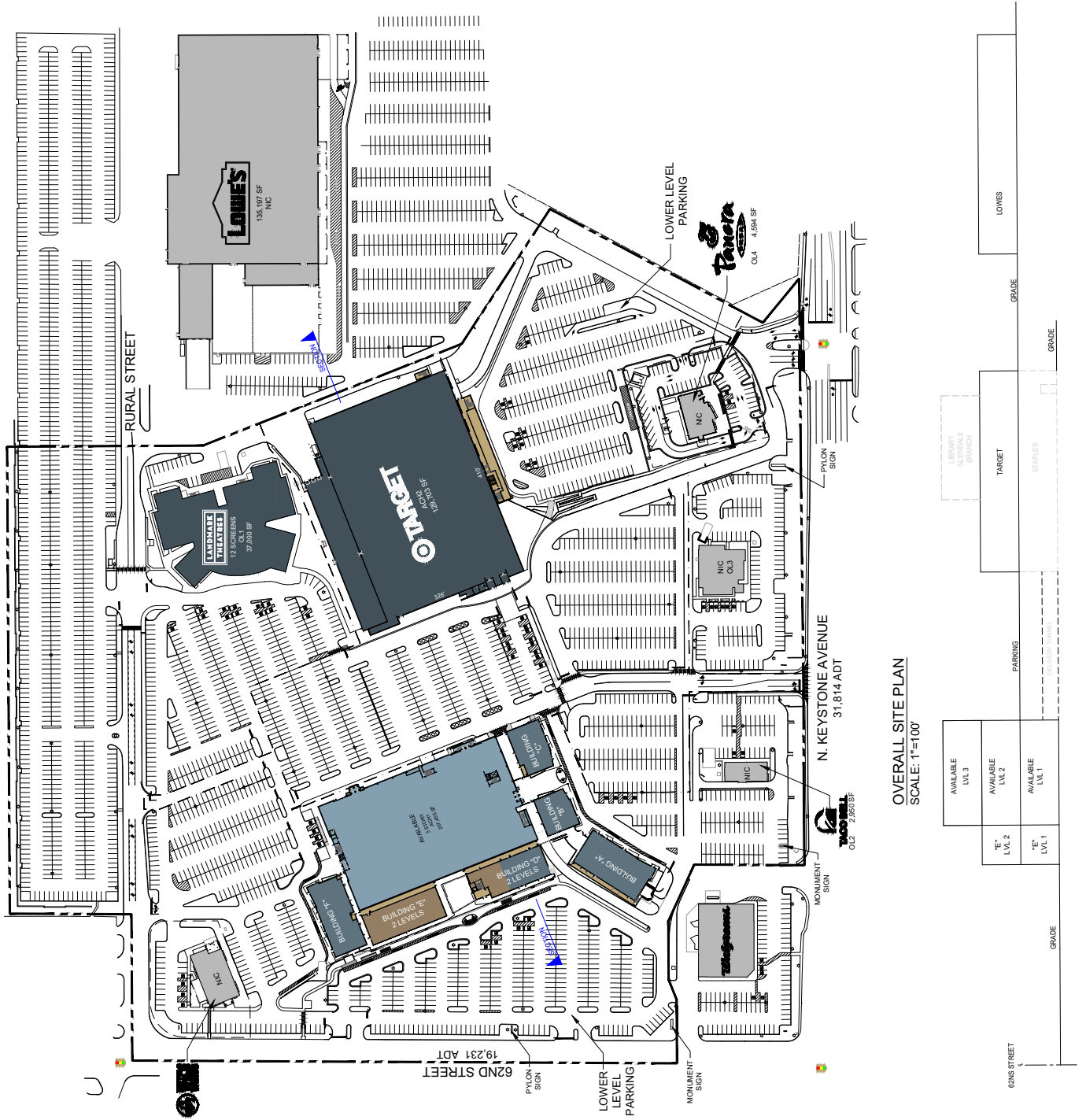
LEASING CONTACTS

Blake Beaver
bbeaver@kiterealty.com
317.713.5640

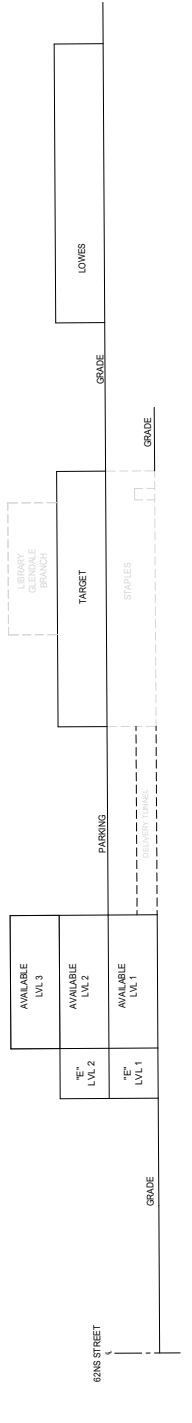
Gregg Poetz
gpoetz@kiterealty.com
317.578.5153

GLENDALE TOWN CENTER

6101 North Keystone Avenue
Indianapolis, IN 46220

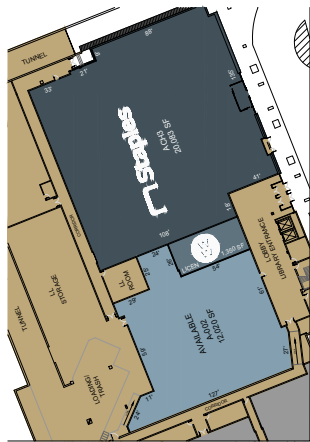


OVERALL SITE PLAN
SCALE: 1"=100'

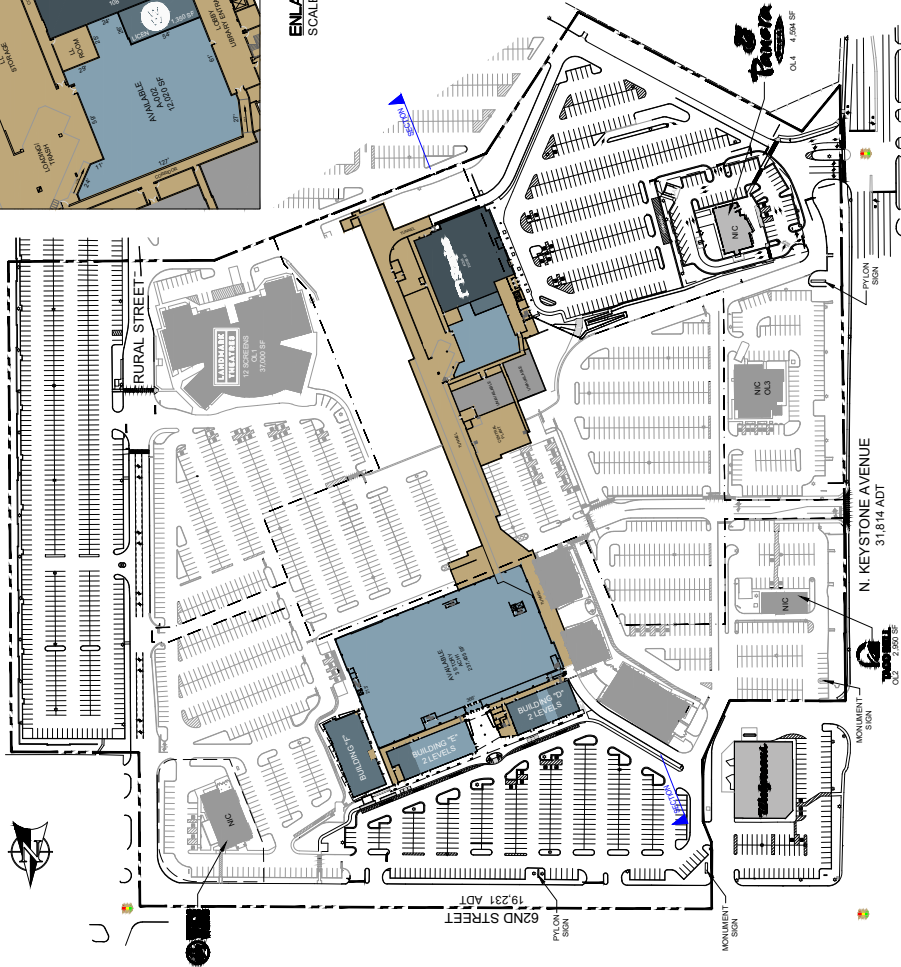


GLENDALE TOWN CENTER

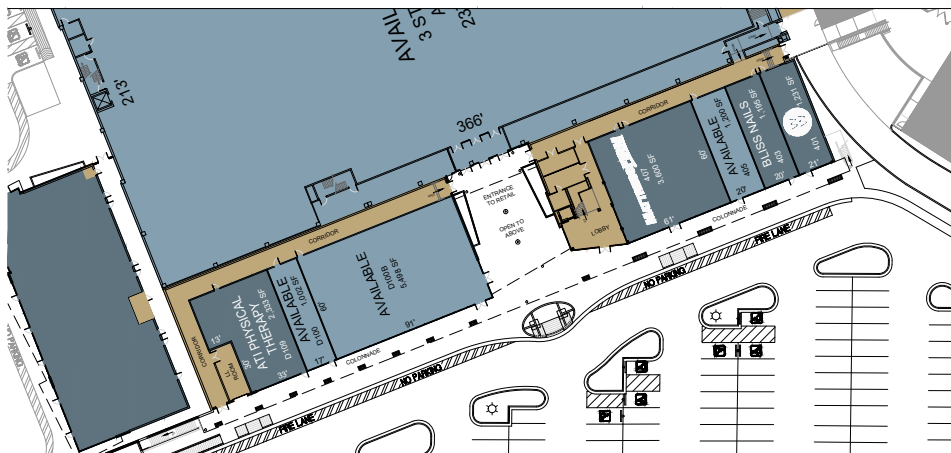
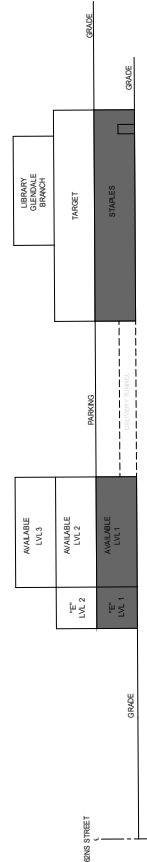
6101 North Keystone Avenue
Indianapolis, IN 46220



ENLARGED VIEW
SCALE: 1"=40'



OVERALL SITE PLAN
SCALE: 1"=100'



ENLARGED VIEW
SCALE: 1"=30'

