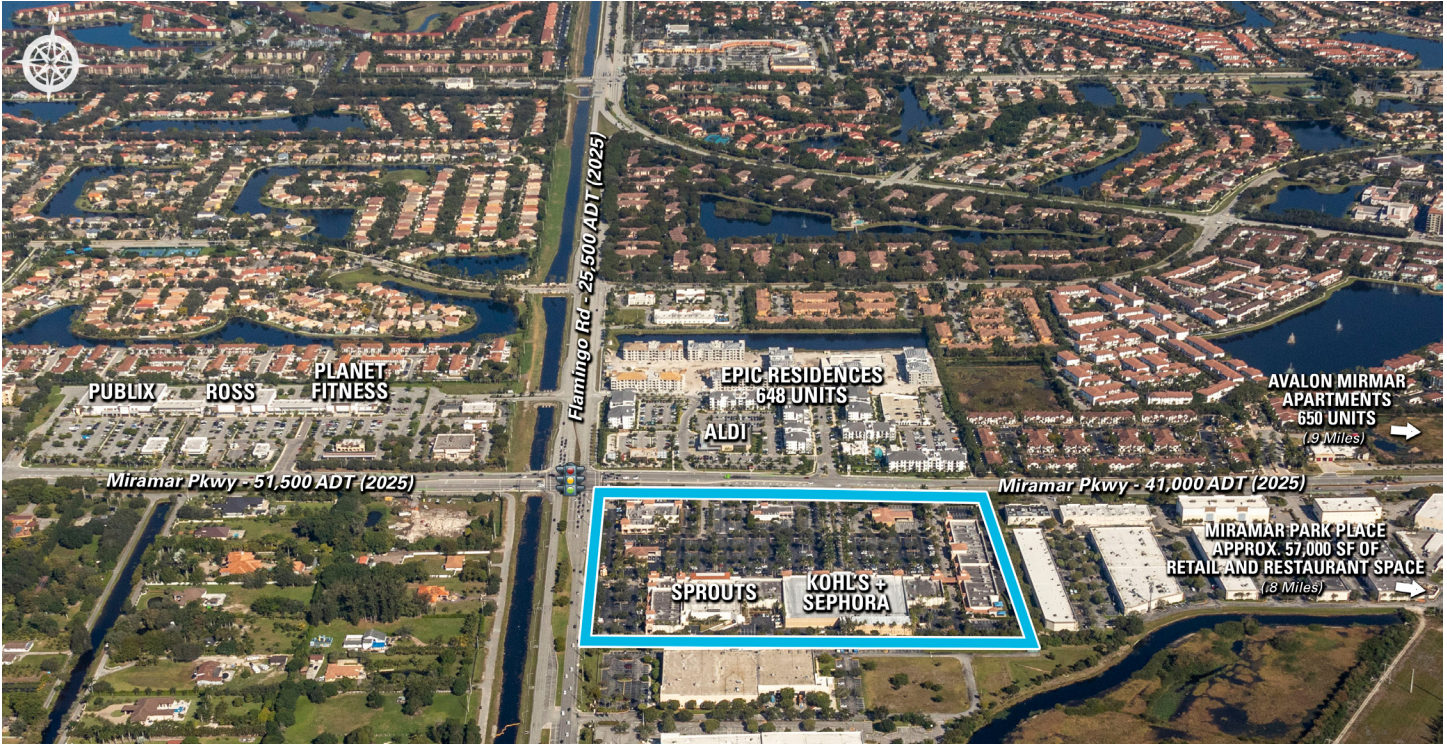


MIRAMAR SQUARE

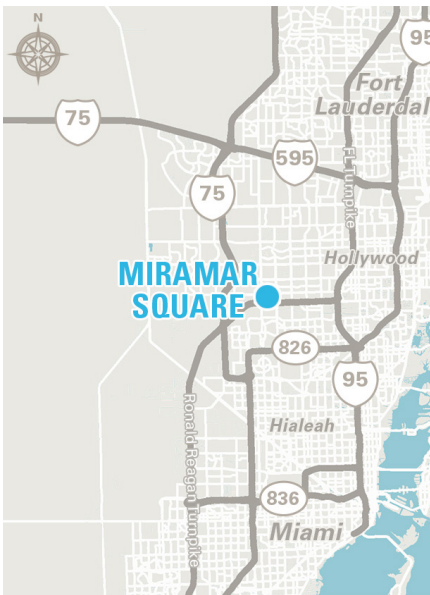
12100 Miramar Parkway | Miramar, FL 33025



Miramar Square

MSA: Miami, FL | GLA: 135,568

Specialty-grocer anchored community shopping destination situated in the high-density south Florida community of Miramar. There are several commercial and residential development projects underway in proximity to center. Miramar Square is anchored by Sprouts and Kohl's+Sephora.



3 MILE DEMOGRAPHICS



POPULATION
188,710



% POP. GROWTH
(ANNUAL)
0.2%



AVG. HH INCOME
\$99,094



MED. HH INCOME
\$79,634



HOUSEHOLDS
67,628



BACH. DEGREE+
32.3%

**2025 Demographic Source (PopStats)*

LEASING CONTACT - Brian Hector - bhector@kiterealty.com - 407.563.0110



317-577-5600 kiterealty.com

KRG
LISTED
NYSE

