

# RANGELINE CROSSING

GLA: 99,497 SF

1344 - 1648 South Rangeline Road  
Carmel, IN 46032



- Rangeline Crossing is located in the heart of Carmel at the corner of Rangeline Road and 116th Street near Carmel City Center, The Palladium, The Monon Trail, and the Monon Community Center and Water Park.
- The center is anchored by Panera Bread, Walgreens, Piada Italian, and City BBQ.
- In 2017, Carmel was named #16 “Best Places to Live” by Money Magazine. The financial publication cited the area’s low unemployment and high economic growth as critical factors in its selection.

	3 Mile	5 Mile	7 Mile
2020 Estimated Population	65,893	163,175	316,003
2025 Projected Population	70,577	176,007	339,458
2020 Estimated Households	27,435	66,645	130,128
Average Household Income	\$117,700	\$125,478	\$112,666

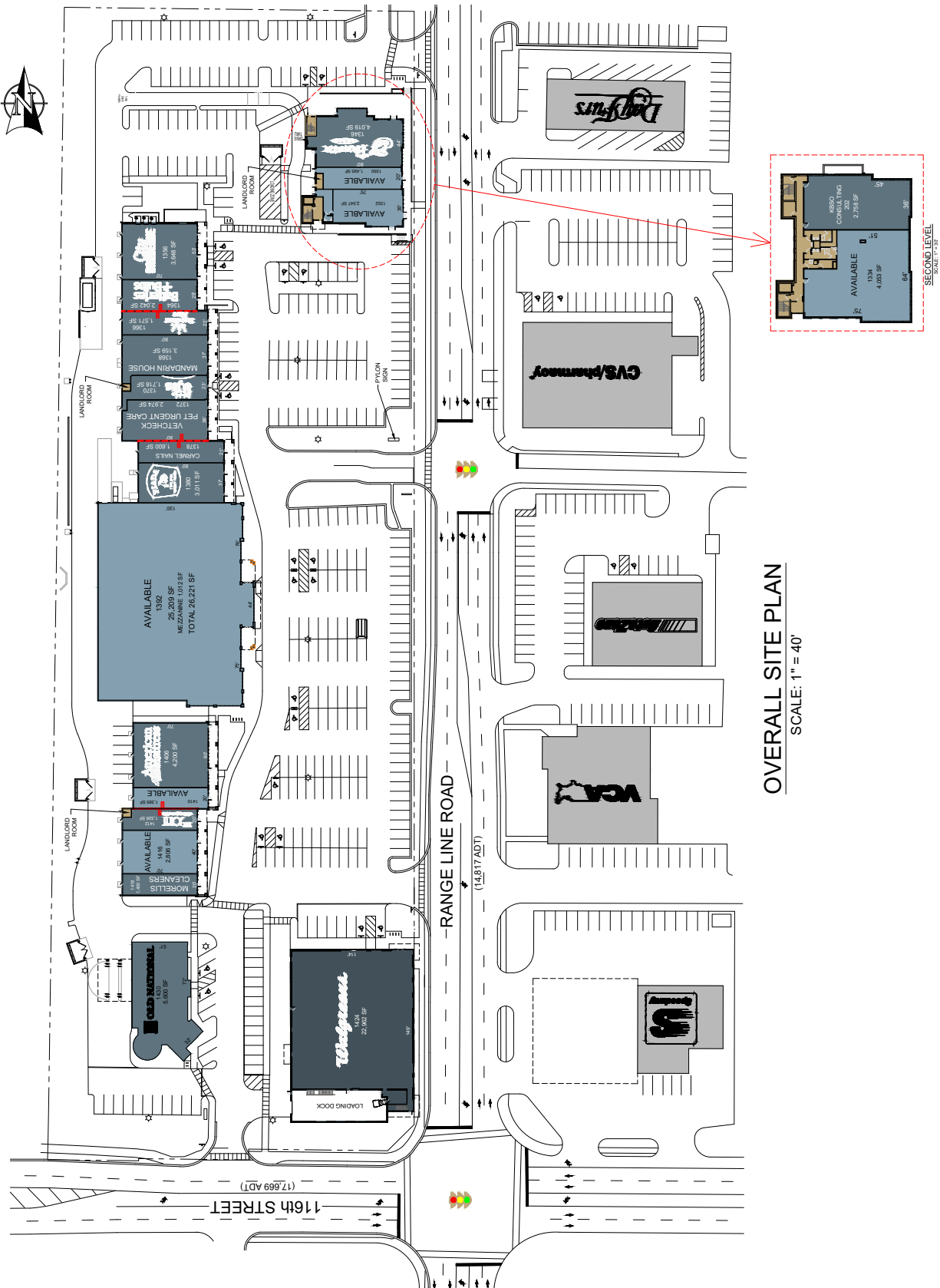
## LEASING CONTACT

**Blake Beaver**  
bbeaver@kiterealty.com  
317.713.5640

# RANGELINE CROSSING

GLA: 99,497 SF

1344 - 1648 South Rangeline Road  
Carmel, IN 46032



OVERALL SITE PLAN  
SCALE: 1" = 40'