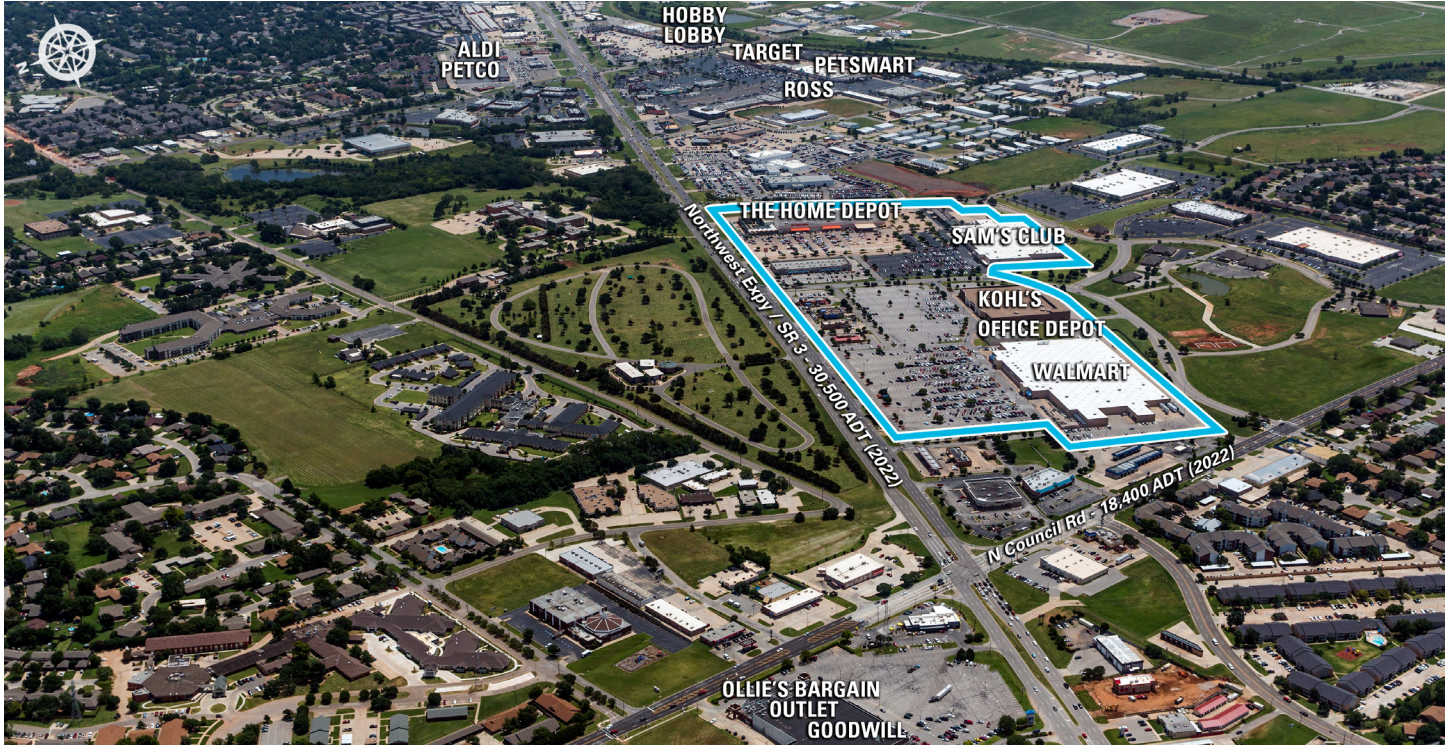


SILVER SPRINGS POINTE

9001 NW Passage Road | Oklahoma City, OK 73132



Silver Springs Pointe

MSA: Oklahoma City, OK | GLA: 48,467

Big-box anchored center featuring an excellent selection of national retailers. The center is located in Oklahoma City and is situated along State Road 3, a key commercial corridor connecting the city's western suburbs to downtown. Silver Springs Pointe is anchored by Kohl's.



3 MILE DEMOGRAPHICS



POPULATION
73,043



% POP. GROWTH
(ANNUAL)
0.13%



AVG. HH INCOME
\$85,534



MED. HH INCOME
\$66,596



HOUSEHOLDS
29,339



BACH. DEGREE+
38.30%

**2023 Demographic Source (PopStats)*

LEASING CONTACT - Gordon Atkinson - gatkinson@kiterealty.com - 972.801.6023



317-577-5600 kiterealty.com

KRG
LISTED
NYSE

SILVER SPRINGS POINTE

9001 NW Passage Road | Oklahoma City, OK 73132



317-577-5600 kiterealty.com

KRG
LISTED
NYSE