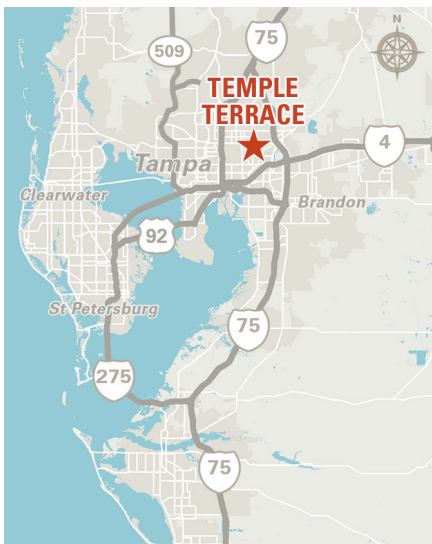
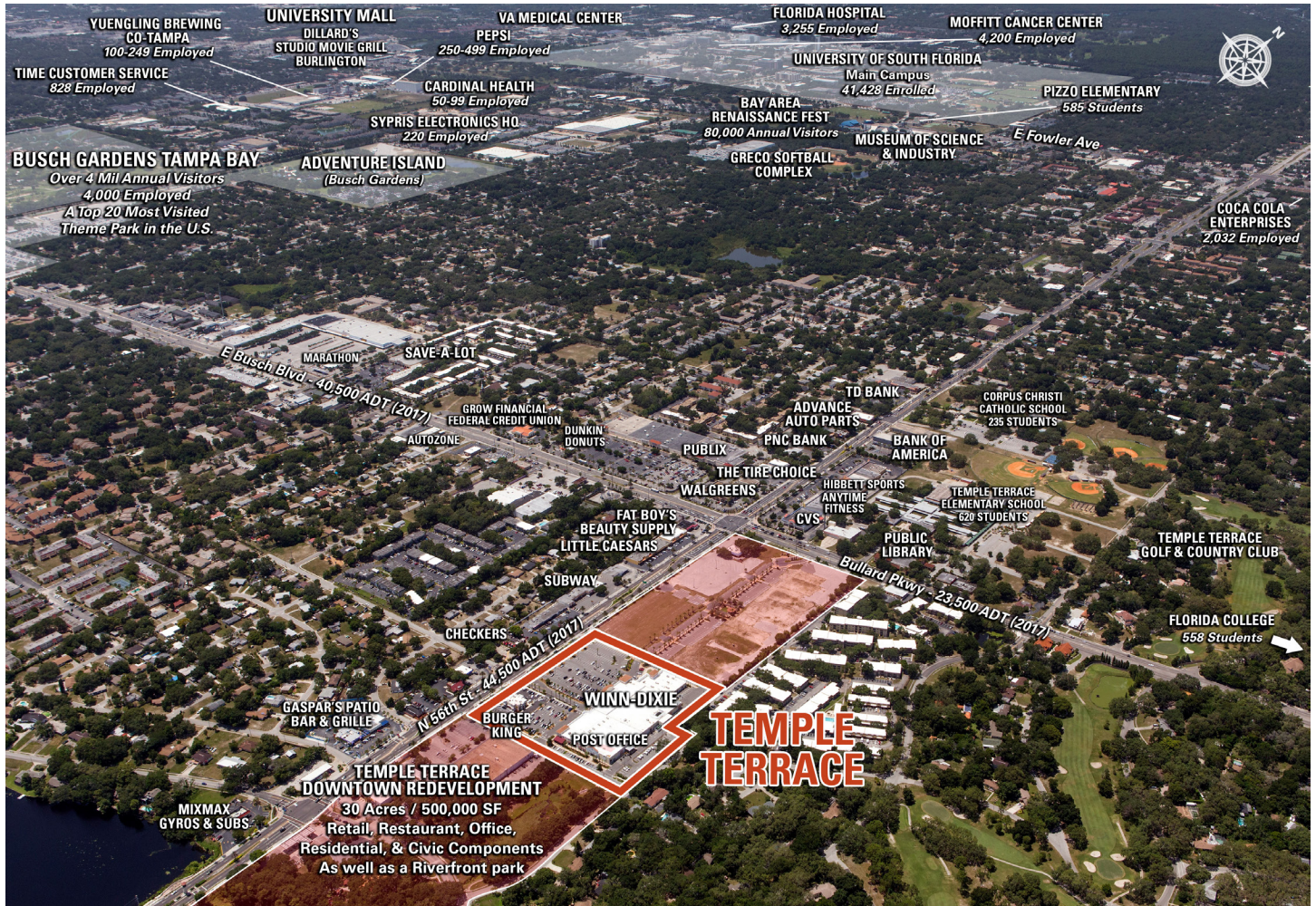


TEMPLE TERRACE

8761-8851 North 56th Street
Temple Terrace, FL 33617



- Temple Terrace is located on the SE corner of North 56th Street and Bullard Parkway in Temple Terrace, Florida. Temple Terrace is a suburb of Tampa and was one of the nation's first master-planned golf course communities. The center is anchored by Winn-Dixie.
- Some of the attractions in this area include Busch Gardens Tampa Bay (4.17 million visitors in 2016), Florida College, and the University of South Florida. The University of South Florida's campus is less than 4 miles from the center and has nearly 50,000 students enrolled, creating an annual economic impact of \$4.4 billion.
- The city is planning a \$1.6 million master-planned redevelopment of their downtown that will serve residents and visitors with a unique mixed-use and lifestyle experience.

	3 Mile	5 Mile	7 Mile
2018 Estimated Population	93,631	240,775	404,060
2023 Projected Population	96,211	249,424	421,105
2018 Estimated Households	36,015	94,194	160,157
Average Household Income	\$49,630	\$47,602	\$55,579

LEASING CONTACTS

Brian Hector
bhector@kiterealty.com
407.563.0110

Gregg Poetz
gpoetz@kiterealty.com
317.578.5153

TEMPLE TERRACE

8761-8851 North 56th Street
 Temple Terrace, FL 33617

