

N. DALE MABRY HIGHWAY - 57,000 AADT

N. GRADY AVENUE

W. LAUREL ST.

3 STORY
PARKING
GARAGE

2ND LEVEL
TARGET

1ST LEVEL
RETAIL

PEDESTRIAN
BRIDGE

LEVEL 3 PARKING 242 SPACES

LEVEL 2 PARKING 367 SPACES

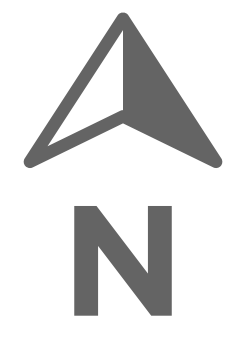
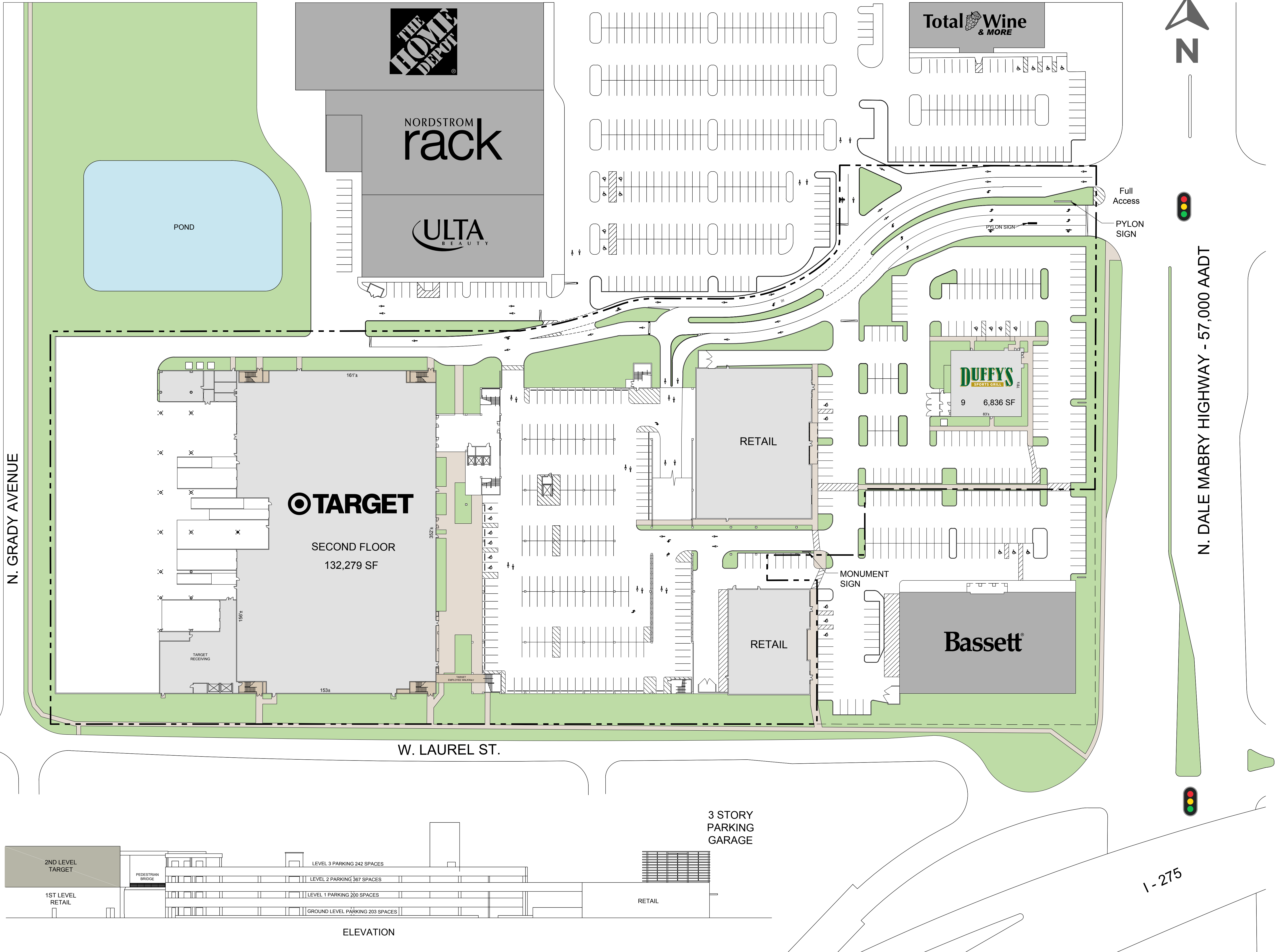
LEVEL 1 PARKING 200 SPACES

GROUND LEVEL PARKING 203 SPACES

RETAIL

ELEVATION

1ST LEVEL



Full Access
PYLON SIGN

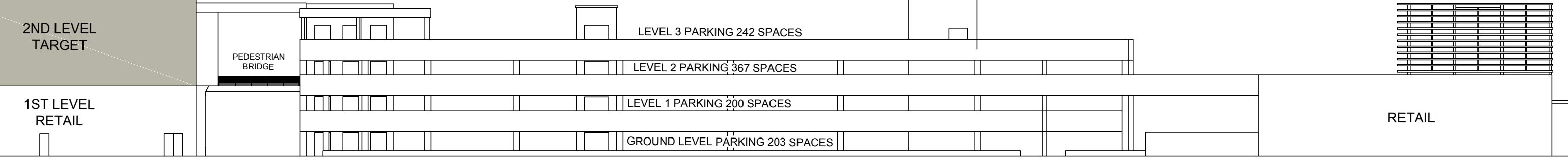
N. DALE MABRY HIGHWAY - 57,000 AADT

I-275

N. GRADY AVENUE

W. LAUREL ST.

3 STORY
PARKING
GARAGE



ELEVATION

2ND LEVEL