



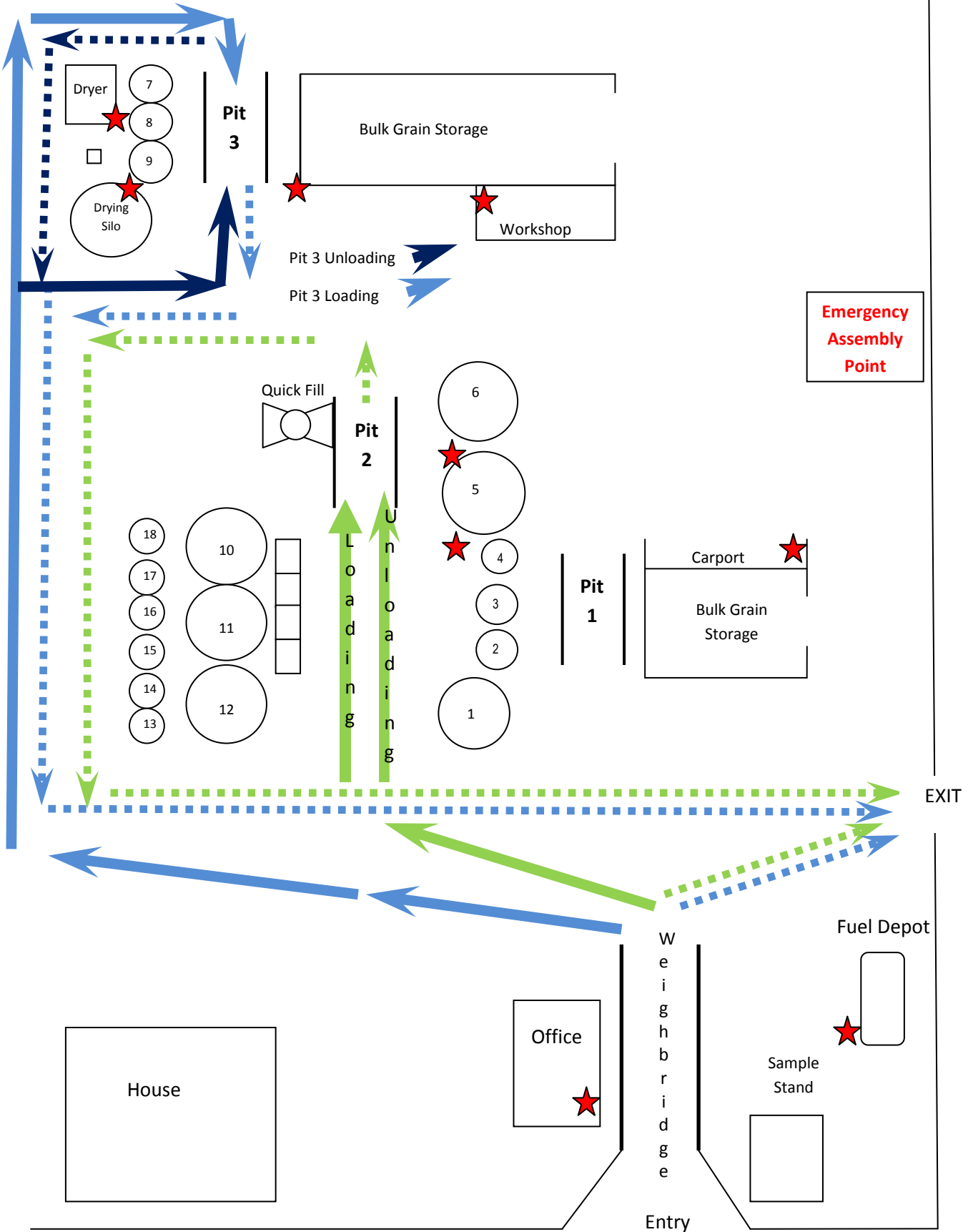
AMPS Premer Site Operating Procedures

- AMPS Storage & Handling operates from 8am to 4pm Monday to Friday, excluding public holidays.
- The weighbridge will close at 4pm otherwise by prior arrangement
- No trucks will be loaded/unloaded outside of these operating hours unless by arrangement
- Under no circumstance will overloaded trucks be received or unloaded at AMPS Waverley Site.

Work Health & Safety Requirements

- Personal Protective Equipment (PPE) must be worn by all persons at all times whilst on site including, but not limited to,
 - High Visibility Clothing
 - Safety Footwear
- Speed limit within the site is 10kpm
- Drivers must at all times, stay within the allocated Waiting Zone
- Passengers and children must stay within the truck cabin
- Drivers must adhere to the nominated traffic route
- Drivers must notify Weighbridge Attendants if leaving the site
- Moving of Plant or Equipment is prohibited unless directed to do so by AMPS staff
- Changing of settings on Plant or Equipment is prohibited
- No drivers are allowed to climb on or around trailers, other than via designated ladders

AMPS Storage & Handling – Premer Site Map



No Through Road

★ Fire Extinguishers