

SMART SOLUTIONS FOR GOVERNMENT

Innovations for training and decision-making

Get Teams up to Speed Faster

SMART displays and software help connect people with vital information worldwide.

First-responders, government departments and military leadership rely on real-time communication between local and remote team members. SMART solutions work with wireless devices so anyone can contribute ideas from anywhere. We enable colleagues to exchange information beyond the walls of meeting, training and control rooms.

We make technology effortless

SMART interactive displays are global technology hubs connecting purpose-built software, content and devices into one active collaboration environment. The applications are limitless.



COLLABORATION

Get everyone on the same page, fast

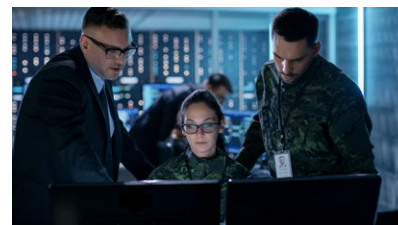
SMART solutions make it easy for everyone to contribute to files in the same unbound digital workspace – across borders and time zones.



TRAINING

Prepare teams anywhere for anything

SMART solutions help you create realistic scenarios using the same types of maps, plans and mobile devices teams would use on the job.



COMMAND & CONTROL

Speed up planning and deployment

SMART solutions speed up planning and decision-making in situations when every minute counts – and you cannot afford miscommunication.

Unparalleled Collaborative Experience

With SMART Board® interactive displays, there's no barrier to what teams can achieve. Simply walk up and use for faster breakthroughs, enhanced productivity and serious ROI.



SMART Learning Suite

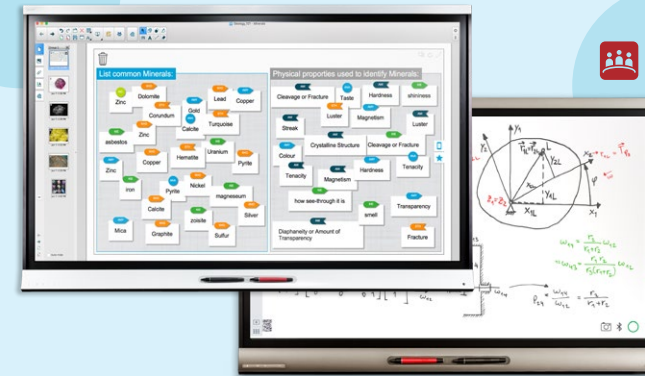


SMART Meeting Pro

SMART Board 7000 & 7000 Pro series with iQ*

Our flagship interactive displays. Featuring HyPr Touch™, they provide the most advanced touch, writing and collaborative experience.

SMART Learning Suite



SMART Meeting Pro

SMART Board 6000 & 6000 Pro series with iQ*

Our most popular interactive displays. Put more heads together to empower collaboration without cables or limits.

Key Features

Multiple colleagues. Multiple tools. Multiple colors. All at the same time. **Only with SMART.**



Simultaneous Tool Differentiation frees multiple colleagues to write, erase and move notes at the same time. **Pen ID™** recognition and **Object awareness™** detection automatically make pens write in different colors, fingers move and palms erase.



SMART Ink® software lets teams write over videos and into PDFs, Microsoft Office® files and websites, then save notes in almost any file type. Automatically convert notes to text and access tools, such as spotlight, magnifier and screen shade.

AVAILABLE WITH Windows 10 Pro on an Intel® Compute Card



OPTIONAL* iQ makes everything one touch away

iQ embedded computing offers one-touch access to collaboration tools including a whiteboard, web browser, and wireless screen sharing from any Android™ (Google Cast), iOS® (AirPlay) and Windows® (Miracast) device – without plugging in hardware or installing apps.

*SMART Board 7000, 6000 and MX series interactive displays are available without the iQ module for federal facilities that have restrictions on Bluetooth and wireless network hardware.

More SMART Solutions

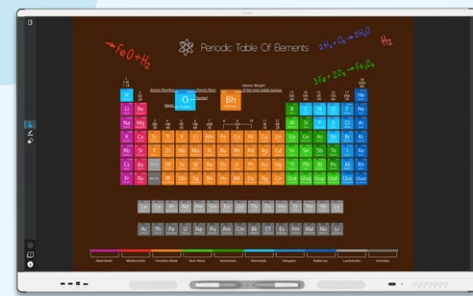


Collaboration Software

All SMART interactive displays come with a 1-year subscription to SMART Meeting Pro or SMART Learning Suite software.



SMART Learning Suite



SMART Board MX series with iQ*

All the essentials

Digital whiteboard. Chromium™ web browser. Easy screen sharing. MX series has all the essential collaboration tools colleagues need to share information, brainstorm options and make decisions quickly – for less than you think.

*iQ is optional



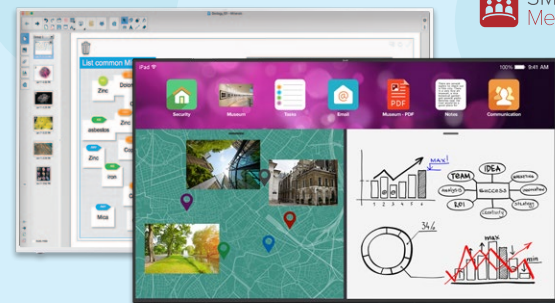
SMART TeamWorks™

Plan. Collaborate. Recap.

With one-touch meeting launch, a connected whiteboard, wireless screen sharing and PDF summaries, SMART TeamWorks is your end-to-end collaboration solution. The whiteboard lets teams interact with all sorts of dynamic content and remote team members can add notes and files as easily as their colleagues in the room.

SMART Learning Suite

SMART Meeting Pro



SMART Board 2000 & 2000 Pro series

Share freely

More than a basic, non-touch display. Wireless screen-sharing makes it easy for colleagues to show whatever is on their Android, iOS, and Windows devices. It's ready to go right out of the box – no apps, wires or extra hardware necessary.



SMART Meeting Pro®

Unbound workspaces

SMART Meeting Pro® visual collaboration software allows colleagues to create and capture ideas in the virtually unlimited interactive workspace. The workspace expands as you add images, files, links and notes – even over multiple displays and meetings – enhancing collaboration.

SMART Meeting Pro

SMART Learning Suite



SMART Podium™ 624

Deliver dynamic presentations

Communicate more effectively. While projecting to a large display, presenters can add notes or illustrations on the 24" touch screen using the cordless, battery free pen – while facing the audience. The SMART Podium also lets instructors deliver training courses from a distance – anywhere, anytime.



SMART Learning Suite

Interactive course content that engages

SMART Learning Suite combines course delivery, collaborative workspaces, game-based learning and assessments into one ultimate software suite. It connects interactive displays and trainee devices enabling instructors to better deliver key concepts, improving engagement and comprehension.

Compare SMART Products

SMART Board
7000 & 7000 Pro
series



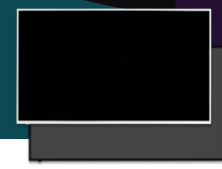
SMART Board
6000 & 6000 Pro
series



SMART Board
MX series



SMART Board
2000 & 2000 Pro
series



SMART Podium
624



SMART Board
7000 & 7000 Pro
series



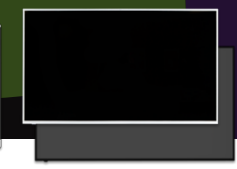
SMART Board
6000 & 6000 Pro
series



SMART Board
MX series



SMART Board
2000 & 2000 Pro
series



SMART Podium
624



MULTIMEDIA

Size(s)	75", 86"	65", 75"	65", 75", 86"	75"	24"
Speakers	2x 10W	2x 10W	2x 10W	2x 10W	N/A
Resolution	4K UHD (HDMI 2.0 video)	4K UHD	4K UHD	4K UHD	1080p

EXPERIENCE

Touch technology	HyPr Touch™ (Hybrid Precision Touch – based on InGlass™)	DViT®	Infrared	Non-touch	Capacitive
iQ technology (embedded computing)	Optional. Available with Windows 10 Pro on an Intel Compute Card.	Optional. Available with Windows 10 Pro on an Intel Compute Card.	Optional. Available with Windows 10 Pro on an Intel Compute Card.	N/A	N/A
Simultaneous Tool Differentiation for multi-user collaboration	Yes	Yes	Yes	N/A	No
Object awareness™	Yes	Yes	Yes	N/A	Automatic tool detection – pen and touch
Pen ID™	4 pens	2 pens	No	N/A	No
SMART ink™	Yes	Yes	Yes	N/A	Yes
Simultaneous touch points	16 (10 touch, 4 pens, 2 erasers) – PC & Mac	8 – PC & Mac	10 – PC & Mac	N/A	10 – PC & Mac
Silktouch™	Yes	Yes	Yes	N/A	Yes
Palm rejection	No	No	No	N/A	Yes
Tools included	4 pens, 1 eraser	2 pens	2 pens	N/A	1 pen – cordless; battery-free

INPUTS

Inputs (including iQ appliance)	1x HDMI 2.0 (4K 60Hz); 1x HDMI 1.4; 1x HDMI-out (HDCP-compliant); 1x Display Port (4K 60 Hz); 1x VGA; 4x USB-B (touch); 4x USB-A; 1x Stereo-in, 1x Stereo- out, 1x SPDIF out; 1x RS-232 In; 1x RS-232 Out; 2x RJ-45	2x HDMI-in 1.4; 1x HDMI-out (HDCP- compliant); 1x Display Port (4K 60 Hz); 3x USB-B (touch); 2x USB-A; 1x Stereo-out; 1x RS-232 In	3x HDMI-in 2.0 (4K 60Hz), 2x HDMI-out (HDCP-compliant), 1x VGA (1080p), 3x ethernet, 4x USB-A, 2x USB-B (touch), 1x SPDIF-out, 1x 3.5mm Stereo-in, 1x 3.5 mm Stereo-out, 1x RS232-in, 3x RJ-45	2x HDMI 1.4; 1x Display Port; 1x VGA; 1x Component; 1x RCA in; RS-232 In; 1x RJ-45; 1x Stereo-in	1x DVI-I-in, 1x DVI-I-out, 1x USB-A, 1x USB-B
Convenience panel	Yes – easy access to power, volume, mute, 1x HDMI, 1x USB-B (touch) and 2x USB-A	No	Yes – 1x HDMI 2.0, 1x USB-B (touch), and 2x USB-A 2.0	No	No
Room control	Yes	Yes	Yes	Yes	No
Presence detection	Dual sensor	Single sensor	No	No	No
Ambient light sensor	No	No	Yes	No	No
Video source switching	On-screen touch with preview	Button toggle	Button with touch on- screen display	Button toggle / Remote control	No

INPUTS (continued)

Menu settings	On-screen display	Buttons	Buttons	Buttons / Remote control	Buttons
Freeze frame	Yes	Yes	Yes	Yes	No
Mini PC mounting points	Yes	Yes	No	Yes	No
Remote control	No	No	Yes	Yes	No

SUSTAINABILITY, REGULATORY AND SAFETY

LED panel lifespan (hours)	50,000	50,000	50,000	30,000	20,000
Conflict-free minerals and materials sourcing	Yes	Yes	Yes	Yes	No
ENERGY STAR® certification	Yes	Yes	Yes – 65"	No	No
Regulatory certifications	EU RED and LV Directives, ISED, cUL, FCC, UL, RCM, CITIC, TRA	65": UL (U.S./Canada), FCC, IC, EMC, LV, VCCI, PSE, KC Mark 75": UL (U.S./Canada), FCC, IC, CE, CCC, EAC, RCM, KC Mark, SPRING, PSE	cULus (U.S. and Canada), FCC, IC, CE Mark, RCM Mark (Australia/New Zealand)	TUV Rheinland (U.S/ Canada), FCC, IC, CE	FCC, ISED, CE Mark, RCM
Environmental compliance	EU: REACH, RoHS, WEEE, Battery and Packaging U.S.: CONEG Packaging, California Prop 65	EU: REACH, RoHS, WEEE and Packaging U.S.: Packaging and Conflict Minerals	EU: REACH, RoHS, WEEE, Battery and Packaging U.S.: Packaging and Conflict Minerals	EU: REACH, RoHS, WEEE, Battery and Packaging U.S.: Packaging and Conflict Minerals	RoHS, REACH, Proposition 65, CONEG Packaging, EU Packaging, WEEE, MEPS and NRCan

SOFTWARE

SMART Learning Suite	SMART Board 7000 series: 1-year subscription	SMART Board 6000 series: 1-year subscription	SMART Board MX series: 1-year subscription	SMART Board 2000 series: 1-year subscription	SP624: 1-year subscription
SMART Meeting Pro <i>One room and 10 personal licenses</i>	SMART Board 7000 Pro series: 1-year subscription with purchase of a Service plan	SMART Board 6000 Pro series: 1-year subscription with purchase of a Service plan	N/A	SMART Board 2000 Pro series: 1-year subscription with purchase of a Service plan	SP624P: 1-year subscription
SMART TeamWorks	Available by subscription	Available by subscription	Available by subscription	Available by subscription	Available by subscription
SMART Remote Management	Available by subscription	Available by subscription	Available by subscription	Available by subscription	Available by subscription

WARRANTY

NA & ROW	3 years standard* Pens: 1 year standard	3 years standard*	3 years standard*	3 years standard*	3 years standard*
UK	5 years standard (7000) 3 years standard (7000 Pro)* Pens: 1 year standard	5 years standard (6000) 3 years standard (6000 Pro)*	5 years standard	3 years standard*	3 years standard*

*1 or 2 year extended options available



Authorized reseller:

SMART Technologies
[smarttech.com/contact](https://www.smarttech.com/contact)

© 2019 SMART Technologies. All rights reserved. SMART Board, SMART Podium, SMART TeamWorks, SMART Meeting Pro, SMART Learning Suite, SMART Ink, HyPr Touch, Object Awareness, Pen ID, Silktouch, the SMART logo and all SMART taglines and product logos are trademarks or registered trademarks of SMART Technologies in the U.S. and/or other countries. All third-party product and company names are for identification purposes only and may be trademarks of their respective owners. 011519