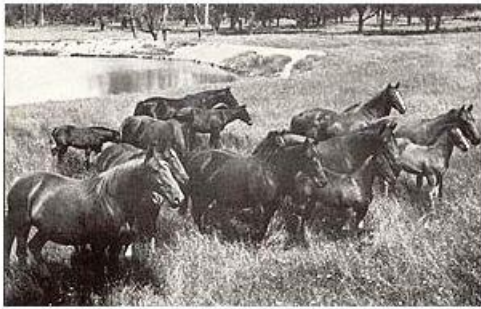


## 1997 HALL OF FAME INDUCTEE

### KING RANCH (AUST) PTY. LTD.



In the early 1950's Robert Kleberg Jnr. began to consider the possibility of expanding the Company's ranching operations beyond the United States. He considered the possibility of breeding Santa Gertrudis cattle in tropical and subtropical climates and subsequent investigation and negotiations led to ventures in Australia. The Company's Australian operations were conducted on more than seven million acres, almost all under lease. Incorporated in 1951,

King Ranch Australia owned the freehold properties of Milton Park, Retford Park and Deltroit in N.S.W. Milton Park and Retford Park (about 3,000 acres between them), were run as a single operation whose principal activities included a Santa Gertrudis stud, a Quarter Horse stud and an artificial insemination centre.

King Ranch Australia also owned ranching properties called Avon Downs, Disney, Elgin Downs and New Twin Hills. A King Ranch Australia subsidiary operated a Northern Territory station called Brunette Downs. The vast pastoral interest of King Ranch certainly must be recognised, however it was for their introduction of the Quarter Horse, and their involvement in the growth and development of the breed in this country, that they are now honoured as part of our own AQHA history.



In 1953 four stallions were selected to be sent to Australia. They arrived in 1954 with Vaquero and Jackaroo going to "Risdon" at Warwick. Gold Standard went to a property in Clermont, Queensland. These three were imported by King Ranch, and the other was Mescal, imported by Sam Hordern. It was another seven years before any more Quarter horses arrived in this country. This was a shipment of three stallions including Tejano Chico and Pronto Mio with eight mares all destined for the King Ranch breeding pastures. Then in 1963 came a shipment of fifteen. There were five stallions, one of these went to Isis Downs in Queensland, and the other four were for King Ranch properties, as were eight of the mares.

King Ranch Australia principals were the key to the development of the Australian Quarter Horse Association in 1964. Starting initially, and based at Milton Park, New South Wales, Peter Bailleau and employees of King Ranch Australia started the Australian Quarter Horse Association. Martin Lemann wrote the first Constitution, and it was King Ranch Australia that drove it in its first few formative years. Peter Bailleau was the first President of the AQHA, and it was King Ranch Australia Directors and their families that were included on the first Board of Directors. These were Sidney Bailleau Myer, Sarah Myer (formerly Hordern), and Martin Lemann (Assistant to the King Ranch Australia General Manager, Peter Bailleau), who was in charge of Quarter Horse stud operations which were run by such great horseman as Stan Shephard, and assisted by Greg Gilpin. It was the performance and Halter horses bred and shown by King Ranch that set the early standards of showing and conformation in Australia.

The important nexus that King Ranch Australia made between the Santa Gertrudis and the Quarter Horse saw many of our great early Quarter Horse breeders like George Greenup, and Barney and Raul Joyce have a connection through their owning both Santa Gertrudis and Quarter Horses. This saw Quarter Horses spread rapidly throughout Queensland and New South Wales. Quarter Horses were sold at every King Ranch bull sale, held annually at Milton Park. They created the high profile of the Quarter Horse that saw their popularity skyrocket.

King Ranch brought American trainer Ronny Kellum to Australia, and he gave demonstrations of cutting at some of these bull sales. He was one of the first U.S. trainers to come here, and ignited enthusiasm for Western events.

King Ranch Australia owned the first Q registered horse (Vaquero Q-1); the first registered Q mare (Maquina Q-5); the first registered Q gelding (Quartermain Q-72); the first R1 registered horse (Chester R1-1); and the first registered R2 horse (Colorado R2-1).

It is now fitting that King Ranch Australia be the first Corporation to be inducted into the AQHA Hall of Fame.

\*\*\*\*\*