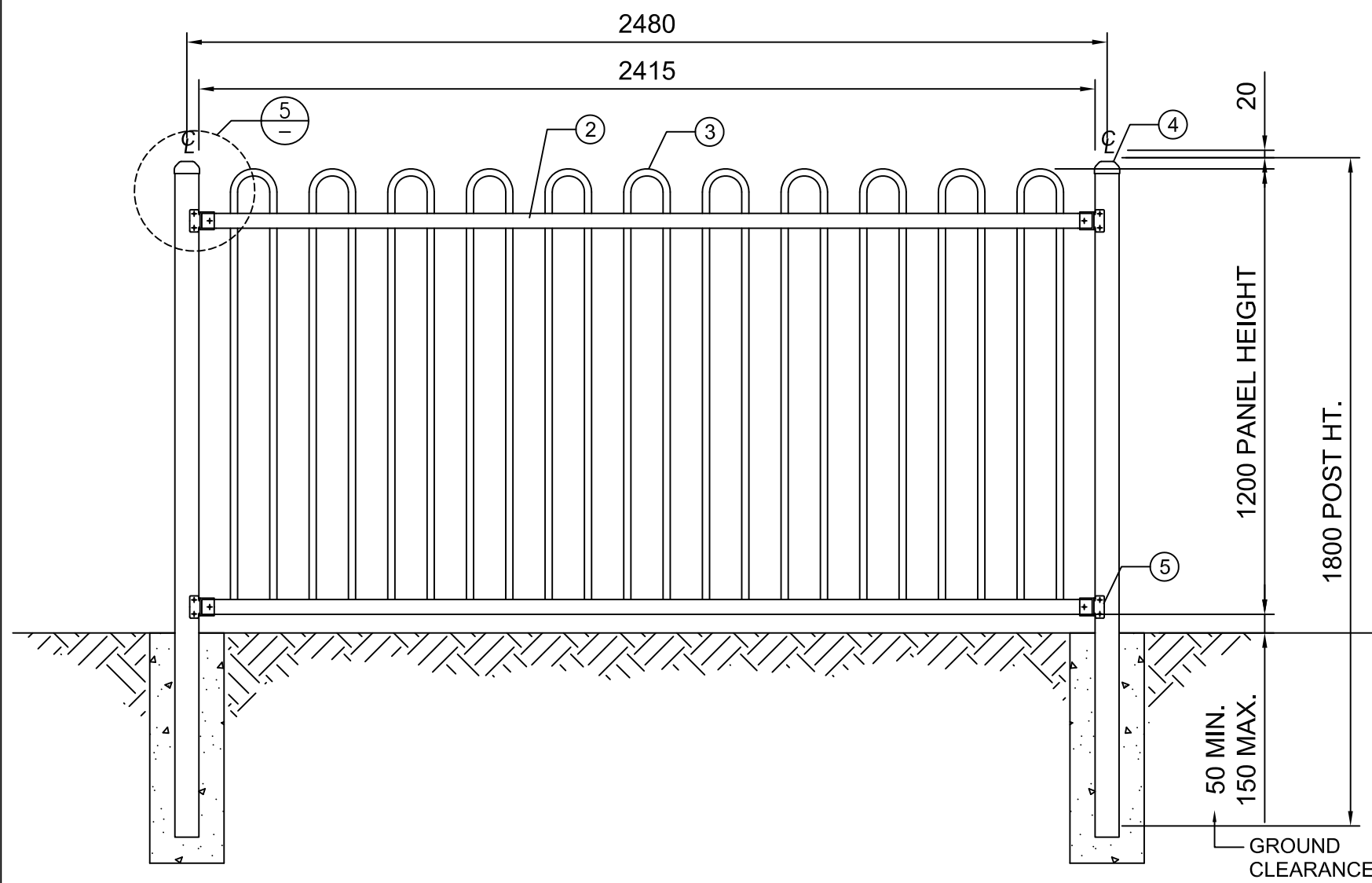
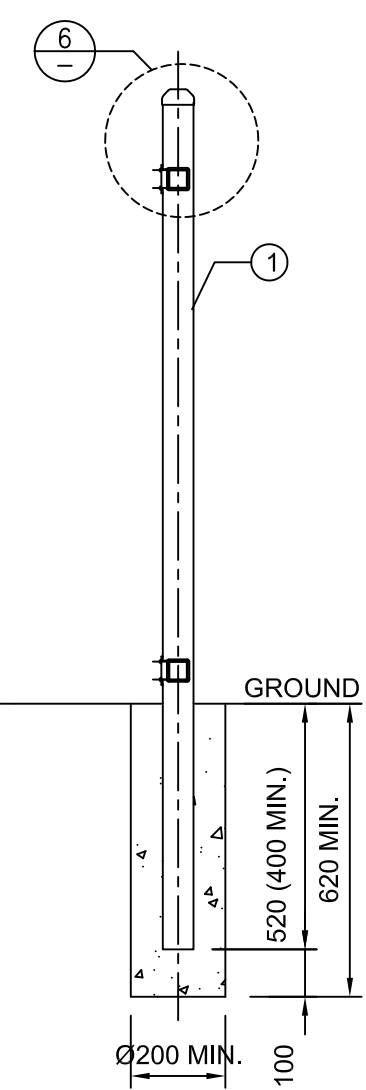


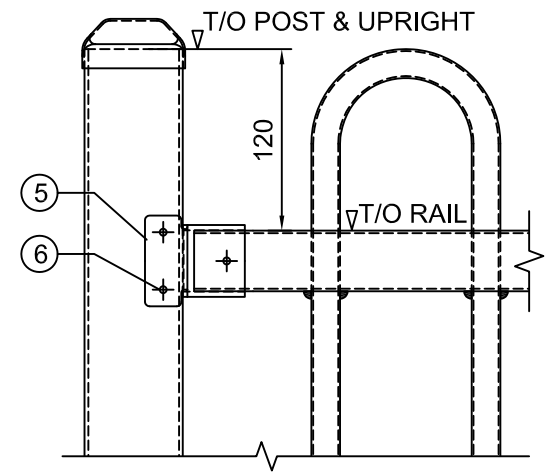
This drawing is copyright. No part of this work may be copied, reproduced, altered or amended, stored in a retrieval system, or transmitted in any form or by any means without the prior permission in writing of the copyright owner.



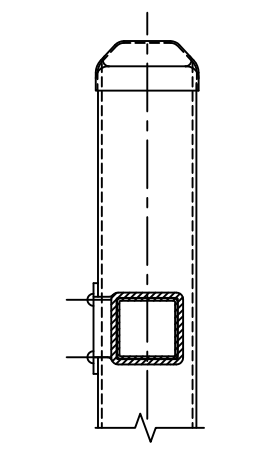
FRONT VIEW
(INSIDE PROPERTY)
SCALE 1:16



SECTION
SCALE 1:20



PANEL TO POST FIXING DETAIL
SCALE 1:5



DETAIL
SCALE 1:5

BILL OF MATERIALS

ITEM	DESCR.	QTY.	SPEC.	MASS (ea)
1	POST	2	65 x 65 x 1.6mm SHS x 1800mm LG	14.93
2	RAIL	2	40 x 40 x 1.6mm SHS x 2400mm LG	-
3	UPRIGHT	11	Ø19 x 1.2mm CHS	-
4	POST CAP	2	65 x 65 STEE CAP	0.08
5	RAIL BRACKET	4	BLUEDOG SECURITY BRACKET	0.15
6	SCREW	12	PENTAFORCE ANTI TAMPER SELF DRILLING TEX SCREW 12G	-
7	PANEL 2400	1	(REF. DWG. "90-19o-LOT-01")	41.53

GENERAL NOTES

- CONCRETE FOOTINGS:- 20MPa MINIMUM.
- SCREWS TO I/SIDE OF FENCE, UNLESS BRACKET RESTRICTED.
- ALL WELDS SILICON BRONZE

BLUEDOG FENCES AUSTRALIA
ph. (02) 9859 6700
f. (02) 9888 5533
bluedogfences.com.au

DRAWN	J.H.	25-01-14
REVIEWED	S.B.	25-01-14
APPROVED	S.B.	25-01-14
SCALE: 1:16, 1:5	@ A3	DO NOT AMEND MANUALLY

© Bluedog Fences Australia Pty Ltd.		
CROWDTUFF® LOOP TOP 2 RAIL 1200 HT. x 2400 LTH. TYPICAL ASSEMBLY		
A3	90-19o-LOT -01	-
CODE	SHEET	AMDT