

SOURCE™

Perfect water for every person, every place.





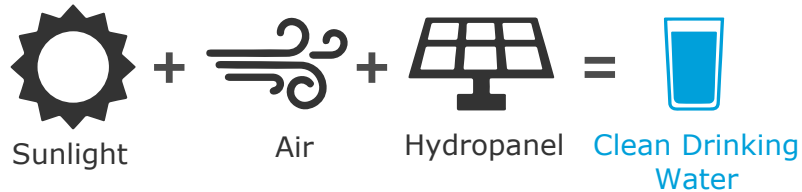
Storing Solar Energy in a Glass

SOURCE™

**solar-powered
drinking water is
the world's first off-grid
renewable water solution**

Offset infrastructure vulnerabilities of
water distribution while offsetting the
energy consumption of bottled water

SOURCE™ : A Virtuous Cycle



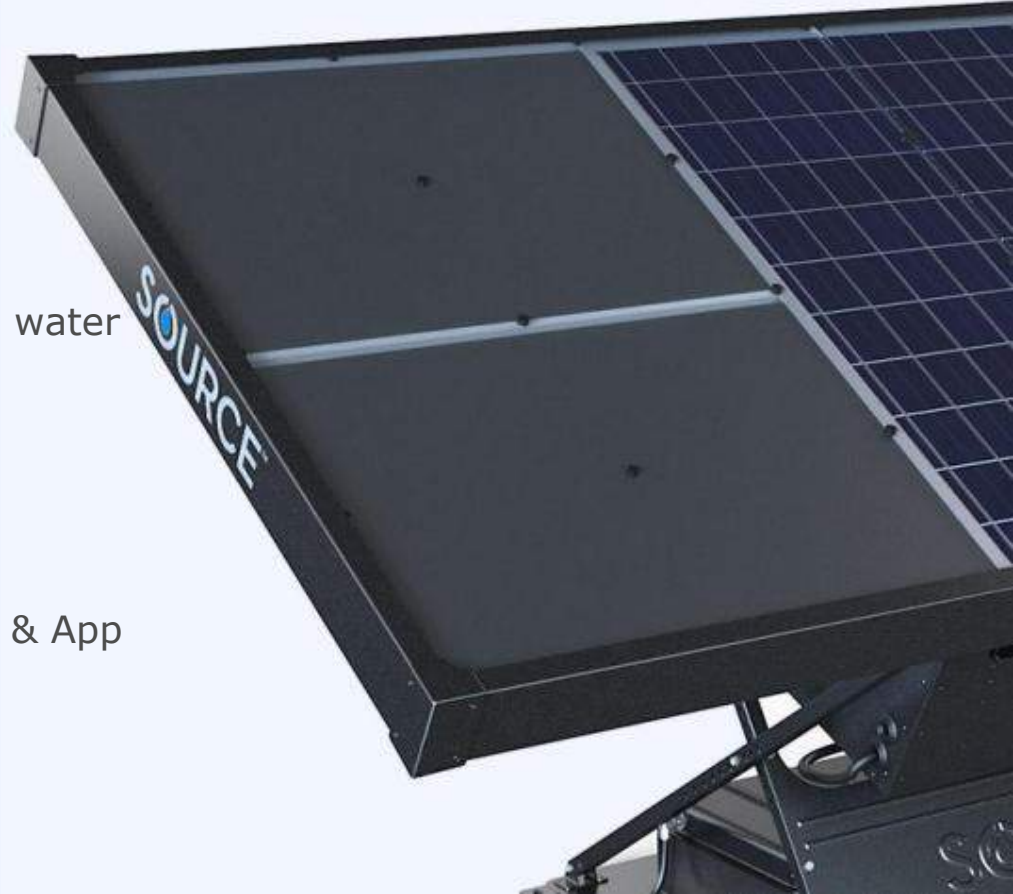
*Bruno Dann - Twin Lakes Cultural Park,
Kimberley WA*

Meet the technology that's perfecting your **water**

SOURCE is an off-grid, healthy & sustainable water solution

Key features:

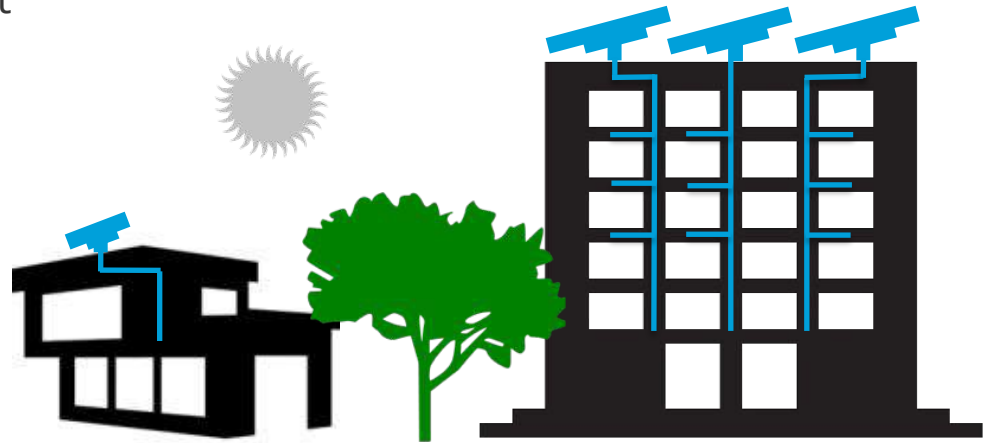
1. Structurally independent, Relocatable
2. 100% Renewable powered
3. Pure mineralised water
4. Remote Operations with Machine Learning & App
5. Water Security



SOURCE™ is Scalable

SOURCE arrays are designed to meet all consumption needs.

From 2-panel household arrays, to large 1000-panel community solutions.



How Does SOURCE Work?



Water vapor from the ambient air around us is drawn into SOURCE via fans and is adsorbed onto special material



Pure water is desorbed into an air-tight system inside SOURCE



Liquid water flows into reservoir and is mineralized



Drinking water passes through flavor polishing cartridge before being dispensed at the tap



SOURCE Hydropanels are connected to a mesh network and are monitored for production and quality

True Cost of Bottled Water



MASSIVE
465,000,000,000

LITRES PER YEAR BY 2020

More broadly, the world consumes roughly 2.6 trillion liters of bottled drinking water per year, all without ownership, security or traceability



EXPENSIVE

\$0.58-7.00

PER LITRE



Huge expenditure while not solving security, access or quality challenges

People spend up to a **third of their income** upgrading their drinking water quality



ENERGY INTENSIVE



Driven by processing, transportation and bottle

Massively wasteful, yet less so than boiling and best alternative to dubious municipal supply



TOXIC **2** %

OF ALL MAN MADE
CO2 EMISSIONS



>465Bn L/yr
x 3 kWh/L
x ~1kg CO2/kWh worldwide avg.
= ~1.4 trillion kg/yr CO2

1.4 trillion kg CO2 /yr
divided by
~50 trillion kg CO2 /yr

Water Production

Using advanced water capture technology, a standard SOURCE array replaces more than a twelve-pack and up to a twenty-pack of bottled water on a sunny day.*



* Two-panel array, > 20°C, >20% RH,
standard 500mL bottles

SOURCE™



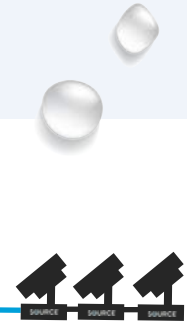
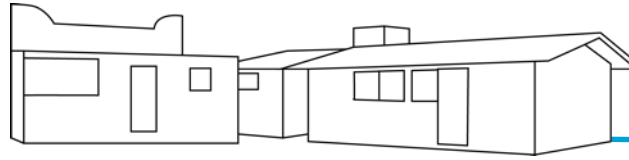
Designed for Simplicity & Safety

Begins with pure water, no contaminants & is mineralised with calcium & magnesium

No supply chain between production & consumption

Simple, efficient delivery from array to your tap

Built from all food-grade materials



Minerals Content	
Calcium	3.2 mg/L
Magnesium	2.3 mg/L
Silica	0.72 mg/L
No Contaminants:	
Total Coliform	No Detections
E. Coli	No Detections
Arsenic	No Detections
Chromium	No Detections
Lead	No Detections

Water tested by certified 3rd party:

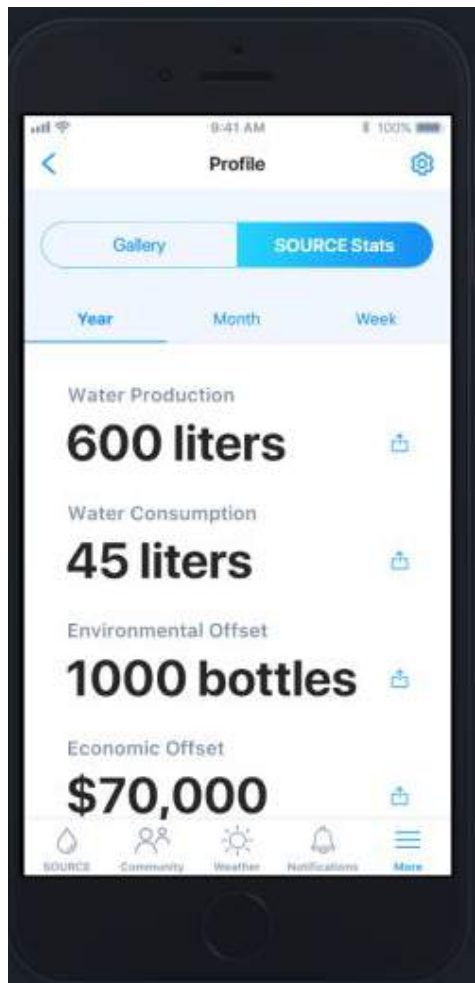
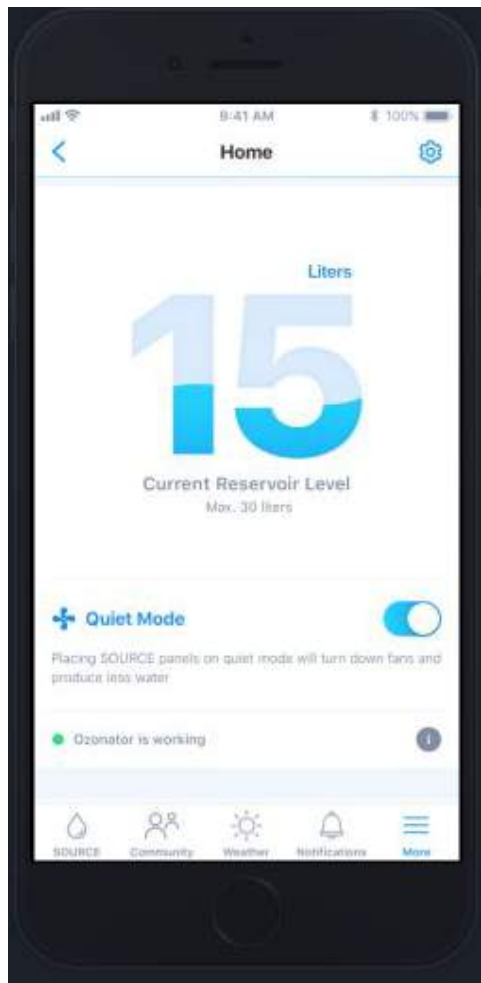
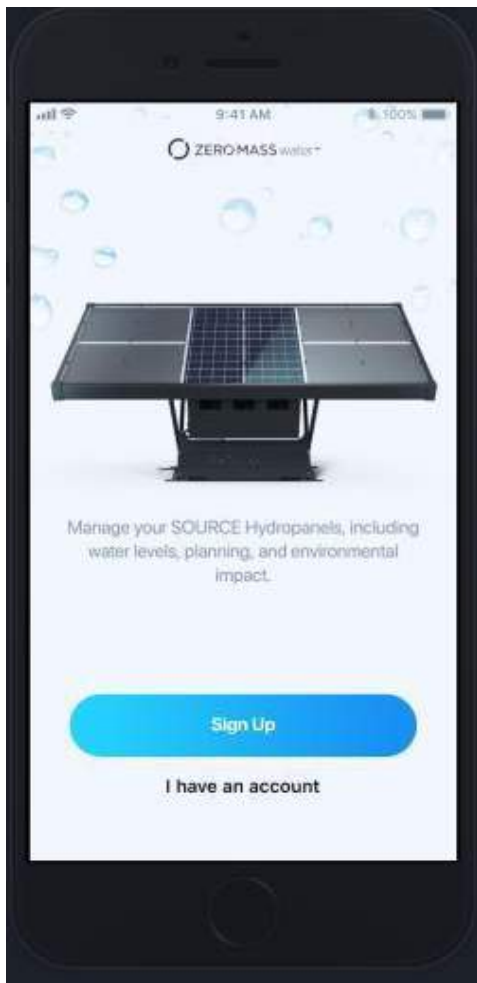


SOURCE

IS RELIABLE, WITH MACHINE LEARNING & APP



- Panels connected to global network
- Real-time performance monitoring
- Remote optimization & machine learning
- Maximizes uptime and efficiency
- User App with system live updates



- Reinforcing commitment to sustainable environmental practice
- Offset millions of plastic bottles - Bill Gates, Jeff Bezos Breakthrough Energy Venture
- Protecting and enhancing local environment
- Affordable, high quality, long-term drinking water solution
- Positive PR, marketing and media engagement
- Anyone, Anywhere





ARENA SOURCE Hydropanel Demonstration Project

- Total project value \$871,000
- All installations completed in January-June, 2018
- SOURCE installed in NSW, QLD, WA, ACT, SA & VIC
- Media Coverage: 7 News, 9 News, 10 Eyewitness News, SMH, Energy Matters & over 20 online publications

SOURCE™

Is installed 60+ locations across Australia, with hospitality, remote, residential, commercial & government customers



ARENA SOURCE Project



SOURCE[™] Around the Globe

Installed on 5 Continents

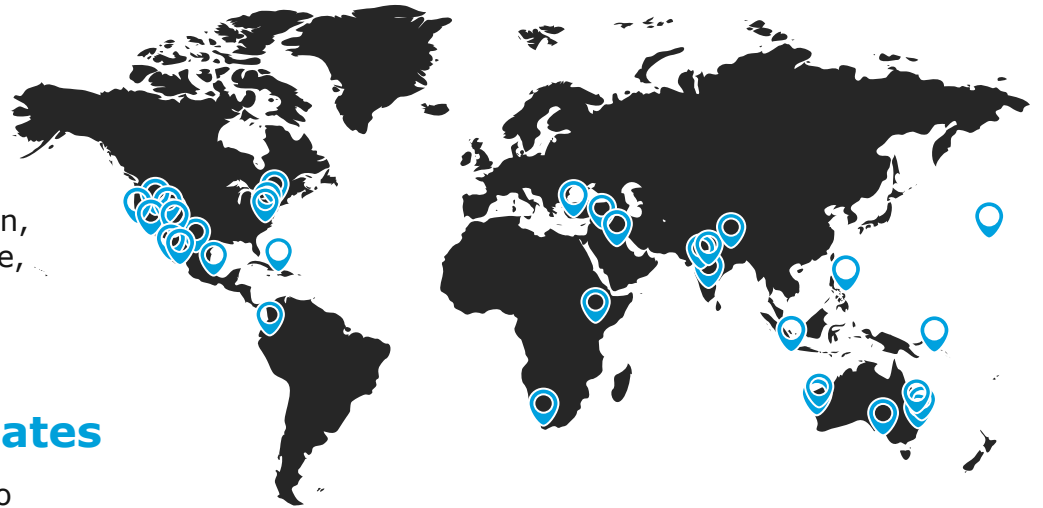
Africa, Asia, Australia, North America, South America

In 23 Countries

United States, Mexico, Ecuador, Jordan, Lebanon, UAE, South Africa, Kenya, Philippines, Singapore, Australia, Vanuatu, India, Indonesia, Fiji, Pakistan

Making Water in Diverse Climates

From Perth to Kangaroo Island, Western NSW to Northern Victoria... and many more locations



Applications of SOURCE™



Hospitality



Schools & Child Care



Disaster Relief



Remote Projects



Single Family Homes



Offices / Commercial



Wildlife



Farms



Government / Council





Hurstville Aquatic Centre, Georges River Council, Sydney





**Lady Elliot Island, Great
Barrier reef**





How do I get SOURCE?

www.hydropoint.com.au

info@hydropoint.com.au

1300 452 385



SOURCE