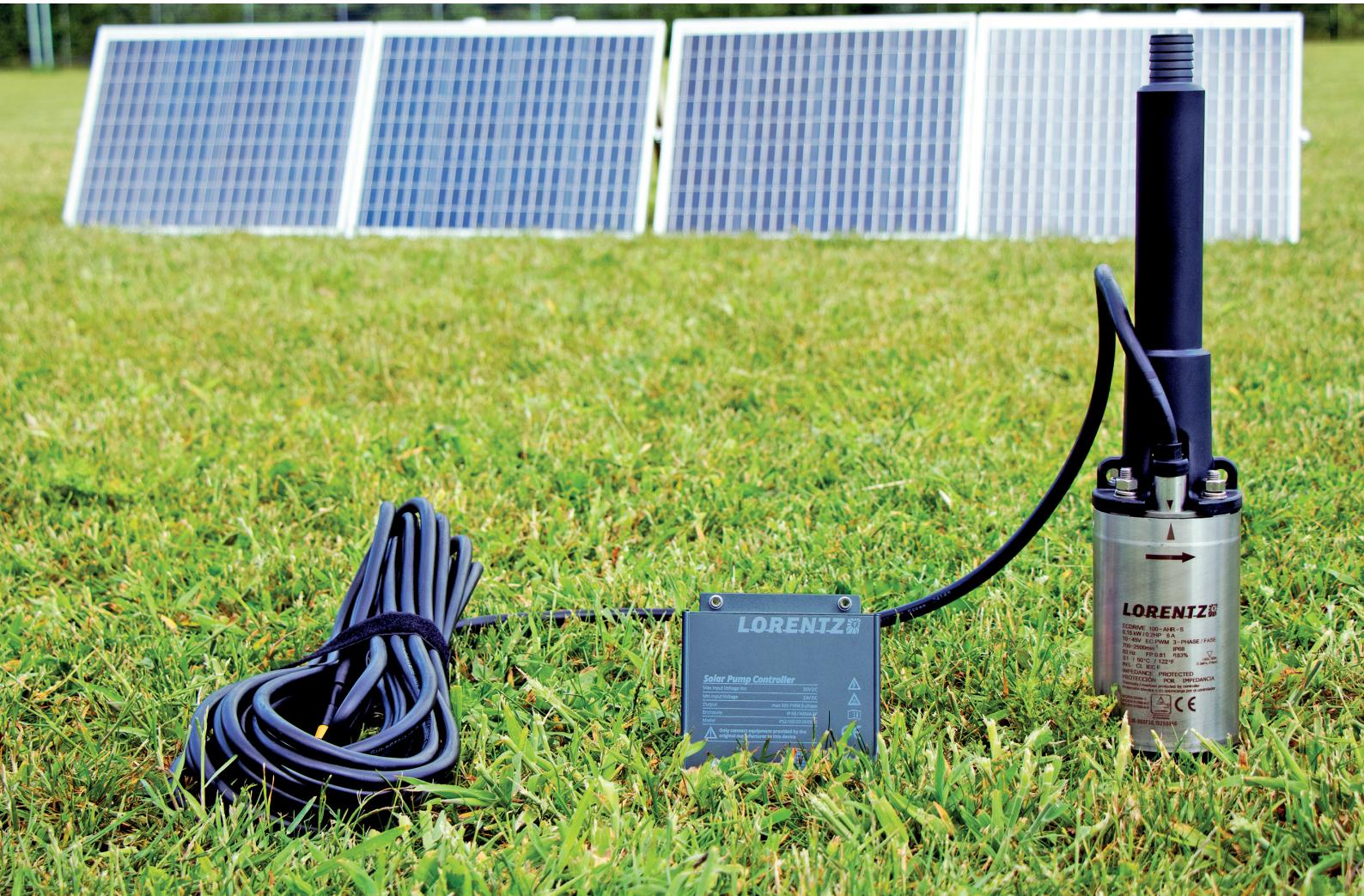


LORENTZ PS2-100

the **small solar water pump** with
incredible **flexibility** and big **performance**



pick it up

a ready to go,
system in a box

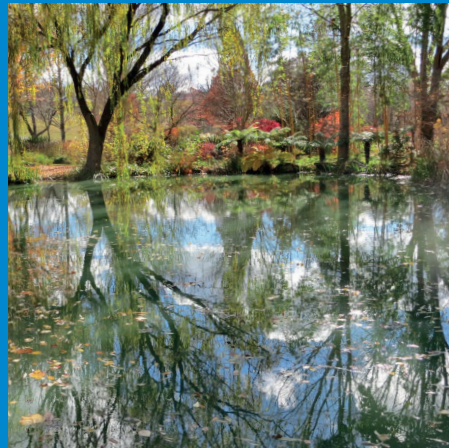
plug it in

no wiring to do, just
plug in and go

pump water

from any source:
pond, stream, well

pond



stream



well



from any source for any application



livestock



drinking water



irrigation

The PS2-100 system includes

- high efficiency DC brushless motor
- helical rotor pump
- 15 m cable attached to the motor with a plug for the controller
- PS2-100 mini controller with accessory inputs for float switch and low water sensor
- PV module adapter to use with any standard PV module (max. 50V Voc)



A small system with big performance

You can pump more than 7,000 gallons per day with one 200 Wp PV module, or pump up to 130 feet vertically. There is a handy chart on the back page where you can see the amazing performance.

Only with high quality materials and high efficiency motors is this performance possible.



Portable and flexible in use

PS2-100 is easy to move, allowing for use in different applications.

The helical rotor submersible pump can be used in a 4" well, can pump water from a tank, pond or stream. The mini pump controller has all of the inputs you need to meet any application.



Quick and easy self install

PS2-100 is a complete system in a box, ready to take away and carry under your arm. Installation is very easy, just connect the plugs and start pumping water. Even the pipe connection fits standard 1" hoses, so no special connections to contend with.

Built by LORENTZ

As you would expect from the global market leader in solar pumping, this small system is built to the same exacting standards as LORENTZ larger solar pumps. We use premium materials and good German engineering for a long life.

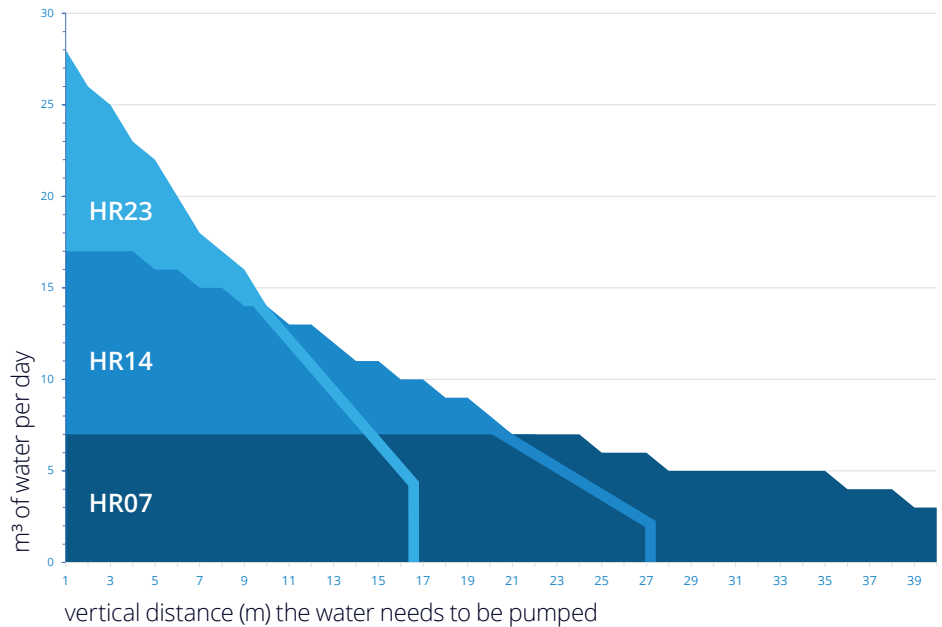
Millions of people, their animals and crops rely on LORENTZ pumps every day.

Free to operate

PS2-100 systems are powered directly by the sun, no batteries, no fuel, no power supply to worry about. It's free to use, quiet, clean and good for the environment.

Amazing Performance

- There are three different pumps to choose from in the PS2-100 range: HR23, HR14 and HR07.
- The chart shows the daily water that will be pumped at different vertical heads.
- Measure the vertical distance that you need to pump water and look on the bottom axis, read across to the left to see how much water to expect per day.



Data provided is the annual daily average based on using a single 205 Wp PV module at location 15N 0E. There are three pump end variants that cover the range of head and flows, please ask your retailer for advice on choosing the one to meet your needs.

**For more information about PS2-100
please contact your local LORENTZ Partner**

1215 Clifton Leyburn Rd Clifton
4361
07 4695 8577
www.qldwindmillandsolar.com.au

