



SPIRETM

Your team, on the same page.

All your data sources in a single reporting interface,
accessible across your entire business.

by **solutek**TM

Why SPIRE?

Combine all of your data sources into a single reporting interface.

Key benefits

SPIRE delivers a low **Total Cost of Ownership** by providing a cutting edge modular approach ensuring you only pay for what you need. These modules work **seamlessly** to ensure every part of your product is in sync and working efficiently.

Our software is deployed by our dedicated team backed by decades of industrial software and controls experience. Our proven data capture systems ensure your **existing PLC and SCADA** infrastructure can be connected to our systems. Don't risk a disparate approach; let us provide your **complete end-to-end system**.

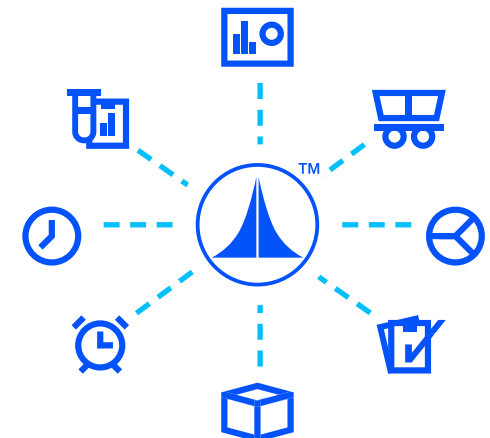
Our **highly configurable interfaces** are proven in the field with end users to provide the information needed in a logically organised and highly accessible, user friendly manner ensuring an exceptional return on your investment.

The **delay accounting module** is a proactive tool used to minimise unscheduled maintenance and resolve problematic areas of production. The ability to view dynamic reports within the interface provides a **valuable tool** to quickly identify causes of lost production.

The reporting module contains an interactive **OLAP cube analysis tool** to ensure data is never locked away in static reports. With SPIRE you have the power and tools to manipulate the information you require into the format and dimension you desire.

SPIRE modules are designed and developed hand in hand with the actual users of the systems to ensure a high level of **suitability, usability and acceptance**.

SPIRE data is securely and openly stored in an industry standard **Microsoft SQL database** allowing easy integration with existing and future systems. Your information is never locked away; it is easily **backed up** or stored to comply with organisational requirements.



Key Performance

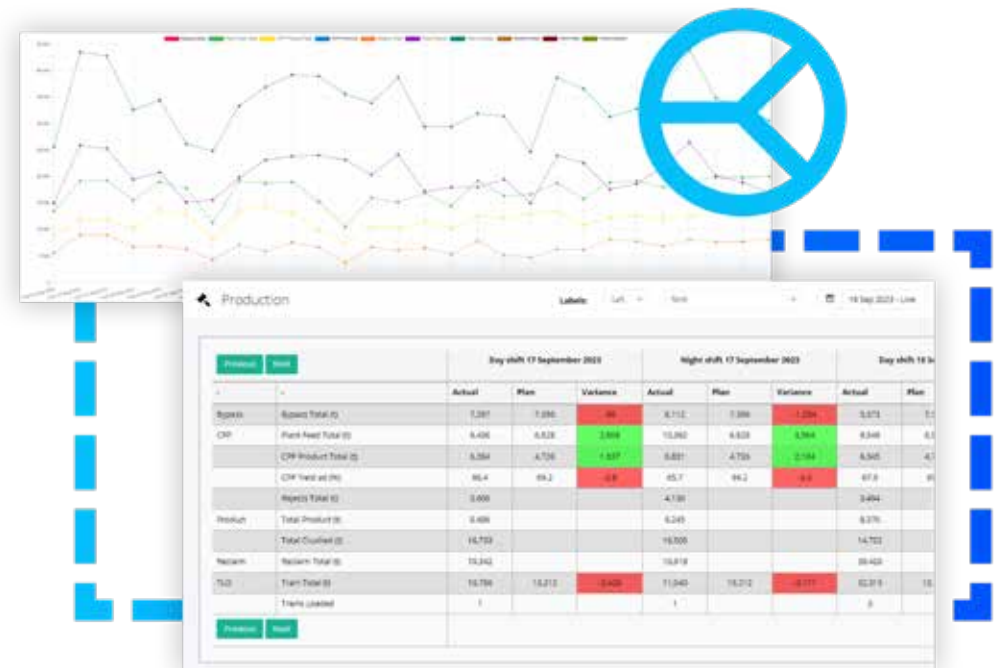
SPIRE Key Performance Indicators (KPI) module provides a quick reference portal for viewing shift performance metrics.

Combining near real time information and scaling target values to highlight progressive shift performance.

Allowing interactive visualisation of performance metrics viewed by shift, day, week, month, year or composite timeframes. Sophisticated charting capabilities and loading of data on demand provides rapid visualisation of key performance information.

The SPIRE KPI module provides the following benefits:

- Centralised interface for viewing key performance indicators
- Information is updated in near real time
- Printable report of the displayed key performance indicator



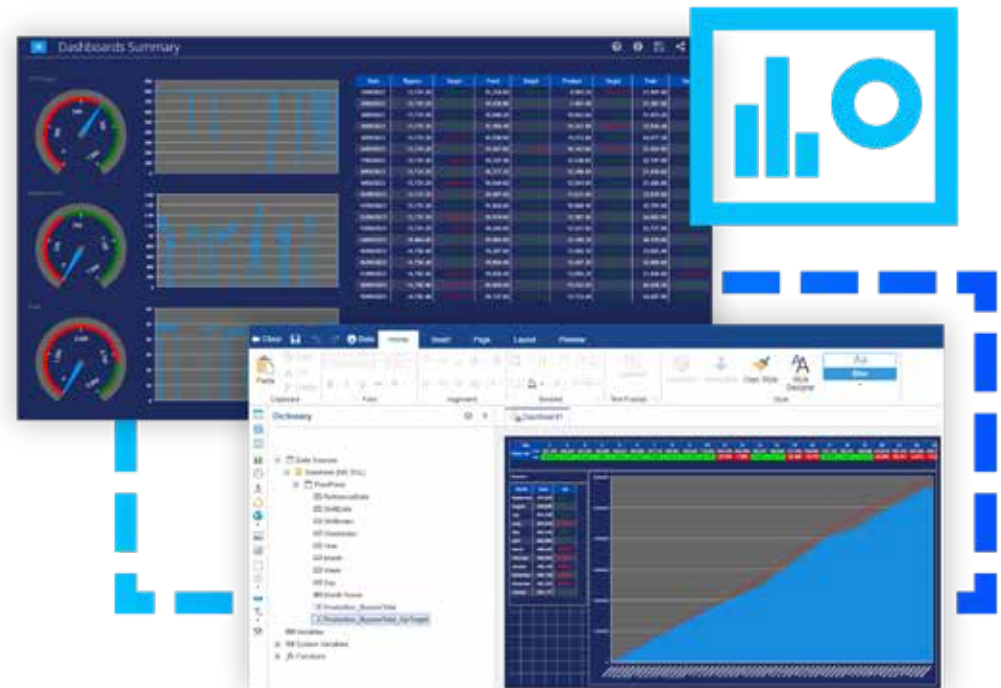
Dashboard

SPIRE Dashboard module provides instant insight into the operation of your plant, combining data from all SPIRE modules.

Displaying critical operational metrics through a set of unique and intuitive visual representations. Any number of role specific dashboards can be configured to ensure that each employee has the information most critical to them.

The auto cycle allows a series of dashboards to be displayed in high traffic areas, promoting awareness of the plant operation.

In addition to the standard dashboard components, SPIRE provides unique module specific controls such as Delay Sequence, showing the correlation between delays and throughput.



Data Analysis

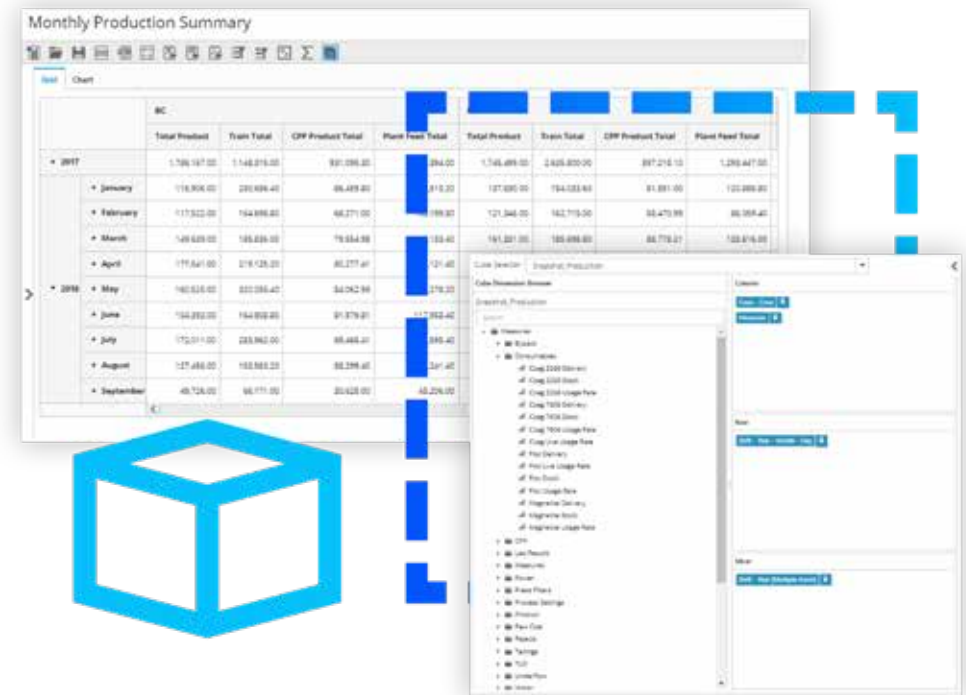
The SPIRE Data Analysis module is used to interrogate large volumes of plant information for patterns and exceptions allowing rapid generation of information to support decision making.

Users can create and share custom views providing completely personalised reporting. This dynamic reporting package delivers business intelligence to all of your organisation.

With this tool information is never locked away in static reports, you have the power to present the information you require in the format and context you choose.

The SPIRE Data Analysis Interface provides the following benefits:

- Microsoft SQL Server based data warehouse (OLAP Cube)
- Built In Charting
- Saving, Loading and Sharing of Views
- Export to Excel
- Hierarchical Drill Downs
- Custom Highlights
- Drag and Drop Interface
- User Calculated Fields



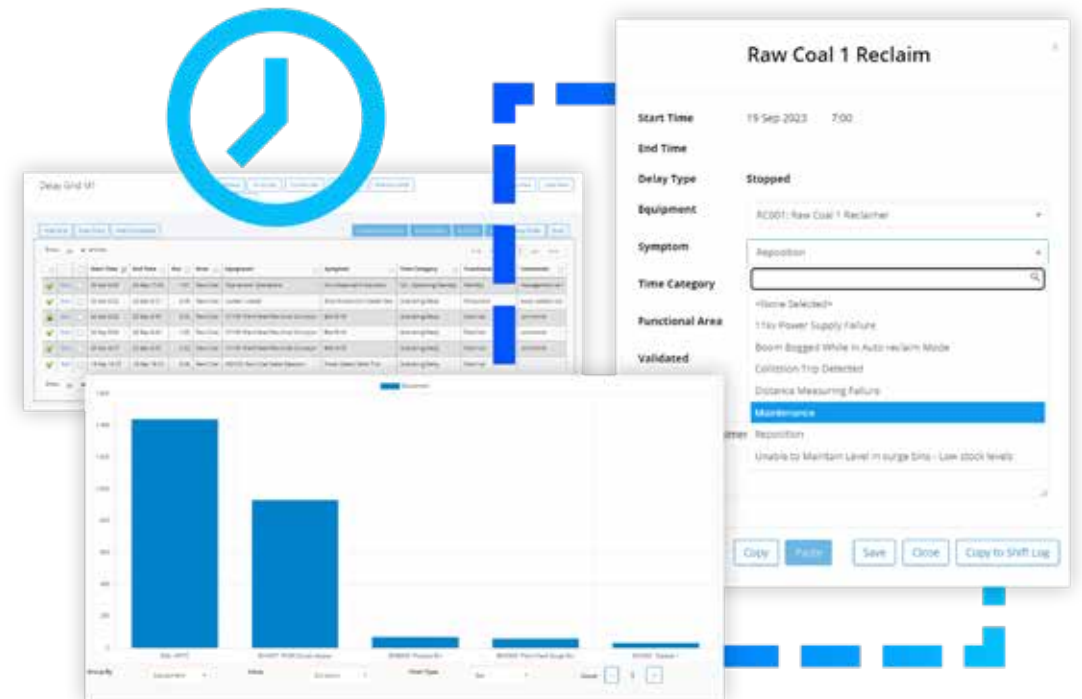
Delay Accounting

SPIRE Delay Accounting module systematically captures production losses (full and partial) for each plant area and can intelligently autocomplete information.

The inbuilt charting allows for instantaneous analysis to focus on current issues. Viewing delay information using the SPIRE Data Analysis module will identify problematic areas of production and common causality.

The SPIRE Delay Accounting Module provides the following benefits:

- Intelligent capture of delay events
- Capture of plant stop (full) and performance loss (partial) delays
- Provides dynamic reporting via filtering and charting without leaving the interface
- Export data directly to Microsoft Excel
- Capture of associated information such as temperature, seam, levels and set points; are fully incorporated into SPIRE Data Analysis
- Fully customisable time model reporting



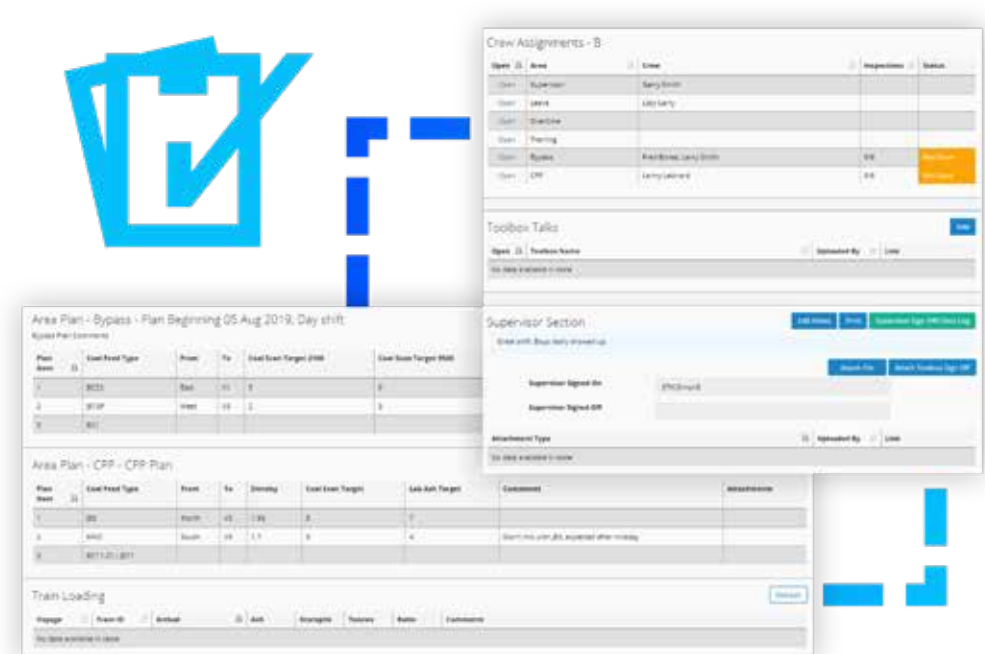
Operations Manager

SPIRE Operations Manager is an electronic shift log and planning tool. It has been designed to safely manage shifts and facilitate the knowledge transfer to the oncoming crew.

The Production Scheduling component allows planners to effectively communicate production plans to plant operators ensuring clear communication and reducing costly mistakes.

Operations Manager provides the following functionality:

- Full statutory auditable shift log
- Plant setting changes and Crew Assignments
- Supervisor pre-start inspections
- Safety checks and Statutory requirements
- Shift Production planning
- Shift Production Summaries and Inspection checklists
- Shift Log and Concern Tracking for shift Knowledge transfer
- Vessel shipment planning and tracking including quality



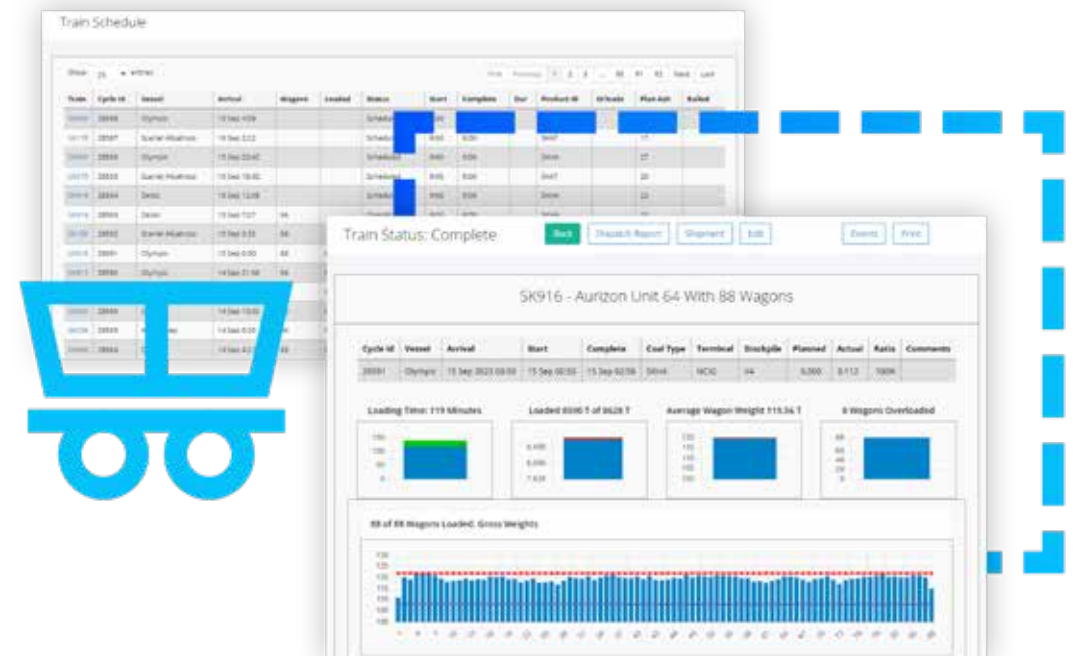
Train Loading

SPIRE Train loading module provides planning, actual and reconciled data for site train loading to improve operational efficiency for technicians and planners.

The SPIRE Train Loading module allows further automation of existing train loading system. The system combines planning, consist, manifest and reconciled port data into a single interface.

The Train Loading Interface provides the following functionality:

- Provide details of inbound trains
- Centralised view of train reclaim planning
- Integration with SPIRE Operations manager and Lab results
- Transfer train consist and reclaim plans directly to site SCADA system
- Full manifest history of loaded trains
- Confirmation of dispatch handling
- Port weights reconciliation



Alarm Analysis

The ISA standard 18.2-2009 was developed specifically to detail an alarm management standard for the process industry.

Part of the process is the automated capture and benchmarking of alarming. The SPIRE Alarm Analyser module is tool designed to manage the alarm life cycle as detailed in the ISA standard. It automatically captures & pre-processes alarms and events from site SCADA systems for analysis.

The SPIRE Alarm Analyser provides the following benefits:

- Automatic Near Real Time Capture of Alarm/Events
- Automated Alarm system performance and benchmarking
- Determine top alarms, by count, chattering alarms & causality
- Group alarms into function, process areas as well as equipment types
- Detailed alarm analysis
- Auditable sequence of events and operator commands
- Saveable views of user generated analysis
- Onboard Documentation to track/measure performance improvements
- Integration into SPIRE Delay Accounting & Train Loading modules
- Subscribe to Reports & analysis



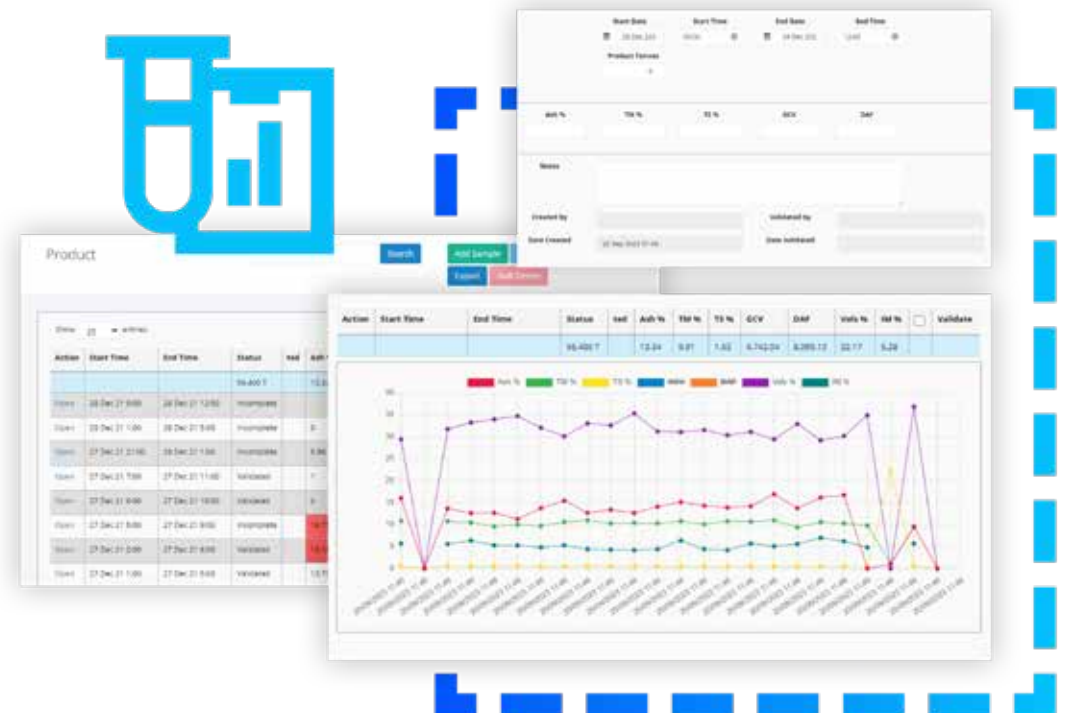
Lab Results

SPIRE lab results module provides an interface for technicians to enter lab data directly into the SPIRE reporting system. The SPIRE data processor will reconcile the information with live production data.

SPIRE lab results provides a two stage data entry system by requiring all data to be validated by another user at a higher level.

The Lab Results interface provides the following functionality:

- Data capture of lab results
- Two stage data validation process
- External facing website for offsite lab to enter data directly into SPIRE
- Configurable areas and fields
- Integration with SPIRE operations manager vessel planning





SPIRETM

Find out more

SPIRE by Solutek
Unit 15-26 Balook Drive,
Beresfield NSW 2322

enquiries@solutek.com.au
(02) 4966 0100
0419 161 909

solutek.com.au