



# Tamworth Regional Local Environmental Plan 2010

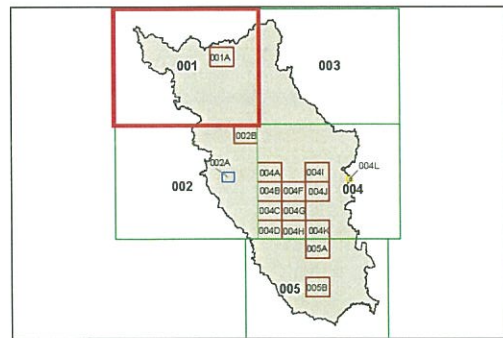
## Land Zoning Map - Sheet LZN\_001

### Zone

- B1 Neighbourhood Centre
- B2 Local Centre
- B3 Commercial Core
- B4 Mixed Use
- B5 Business Development
- B7 Business Park
- E1 National Parks and Nature Reserves
- E2 Environmental Conservation
- E3 Environmental Management
- IN1 General Industrial
- IN3 Heavy Industrial
- R1 General Residential
- R2 Low Density Residential
- R5 Large Lot Residential
- RE1 Public Recreation
- RE2 Private Recreation
- RU1 Primary Production
- RU3 Forestry
- RU4 Rural Small Holdings
- RU5 Village
- RU6 Transition
- SP1 Special Activities
- SP2 Infrastructure
- SP3 Tourist

### Cadastre

□ Cadastre 01/06/2010 © NSW LPMA

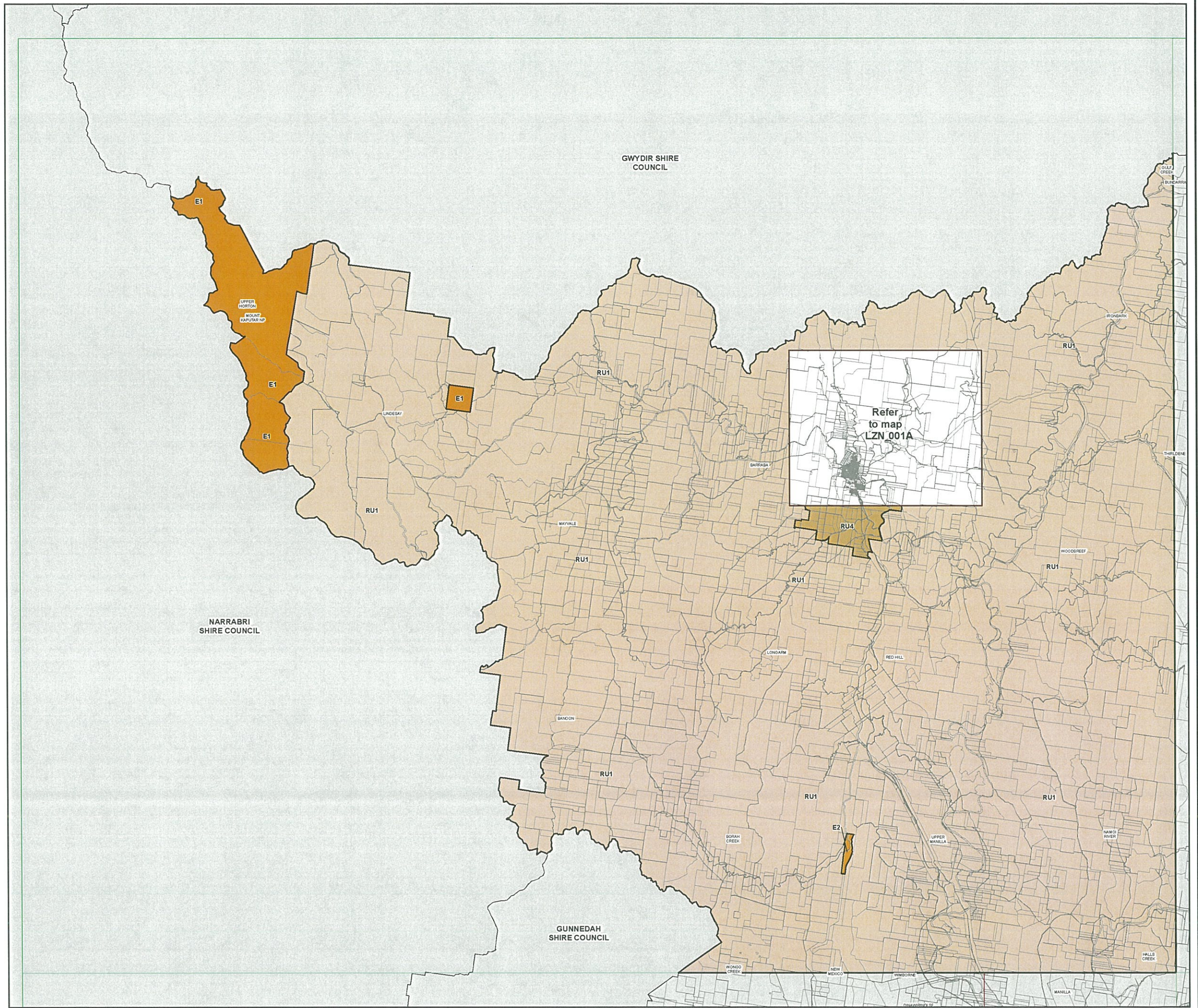


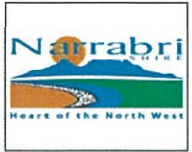
0 2.5 5 Km

Scale 1:240,000 @ A3

Projection: GDA 1994  
Zone 56

Map Identification Number  
7310\_COM\_LZN\_001\_240\_20101022





# Narrabri Local Environmental Plan 2012

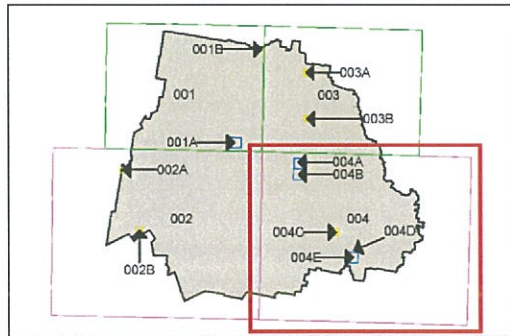
## Land Zoning Map Sheet LZN\_004

### Zone

- B1 Neighbourhood Centre
- B2 Local Centre
- B4 Mixed Use
- E1 National Parks and Nature Reserves
- E3 Environmental Management
- IN1 General Industrial
- IN2 Light Industrial
- R1 General Residential
- R5 Large Lot Residential
- RE1 Public Recreation
- RE2 Private Recreation
- RU1 Primary Production
- RU3 Forestry
- RU4 Primary Production Small Lots
- RU5 Village
- SP2 Infrastructure

### Cadastr

- Cadastre 18/03/2011
- © Land & Property Information (LPI)

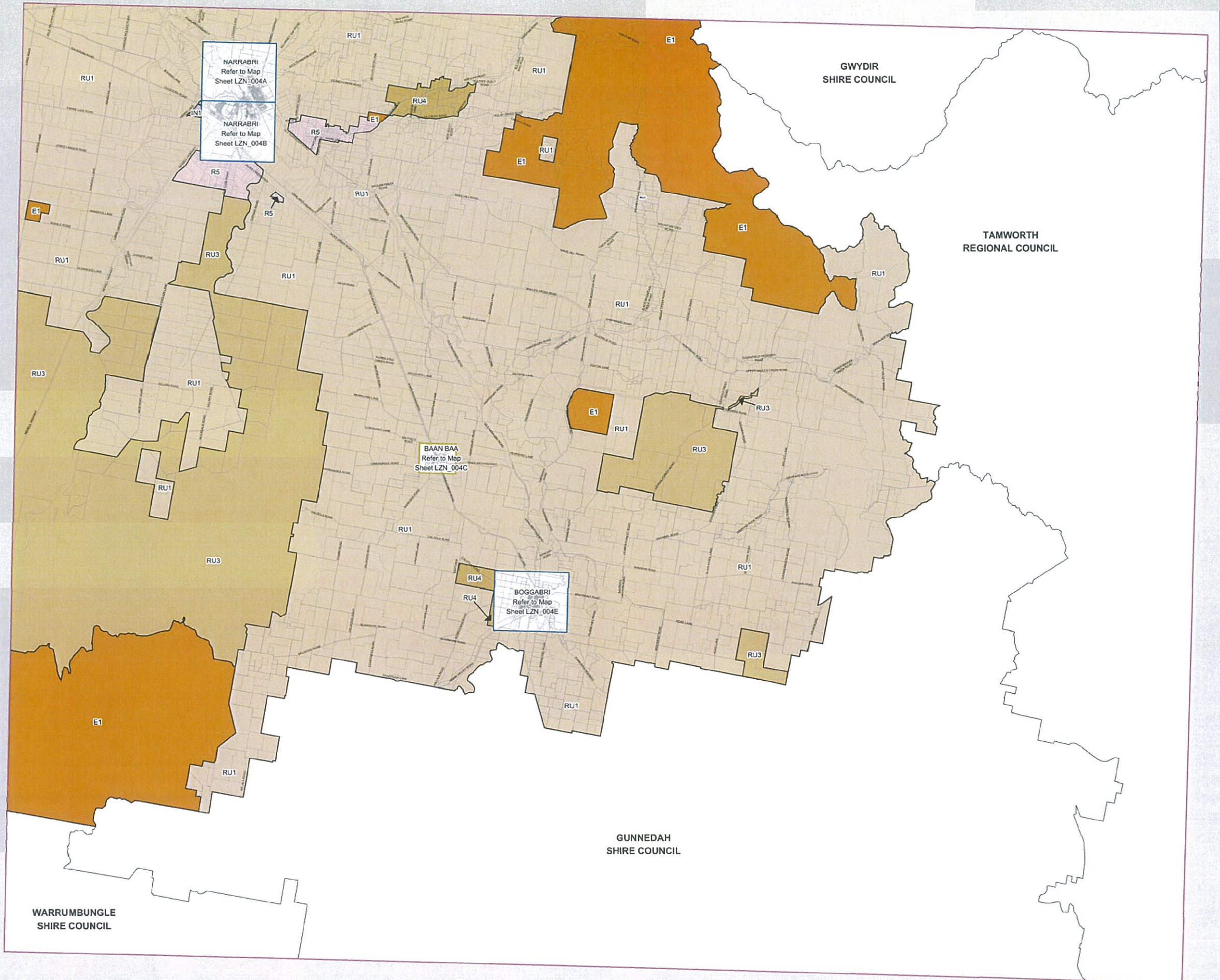


Projection: GDA 1994  
MGA Zone 55

Scale: 1:320,000 @ A3

Map Identification Number:

5750\_COM\_LZN\_004\_320\_20141007





# Warrumbungle Local Environmental Plan 2013

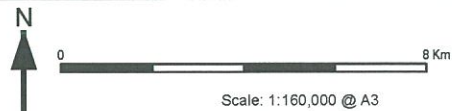
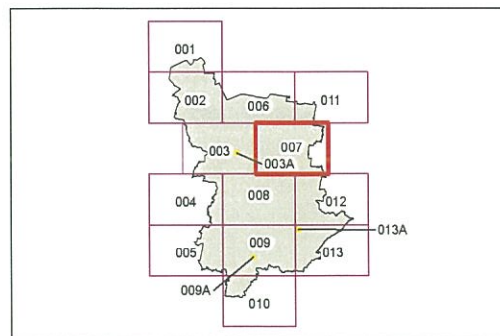
Land Zoning Map - Sheet LZN\_007

## Zone

- B2 Local Centre
- B6 Enterprise Corridor
- E1 National Parks and Nature Reserves
- IN1 General Industrial
- R1 General Residential
- R5 Large Lot Residential
- RE1 Public Recreation
- RE2 Private Recreation
- RU1 Primary Production
- RU3 Forestry
- RU5 Village
- SP2 Infrastructure

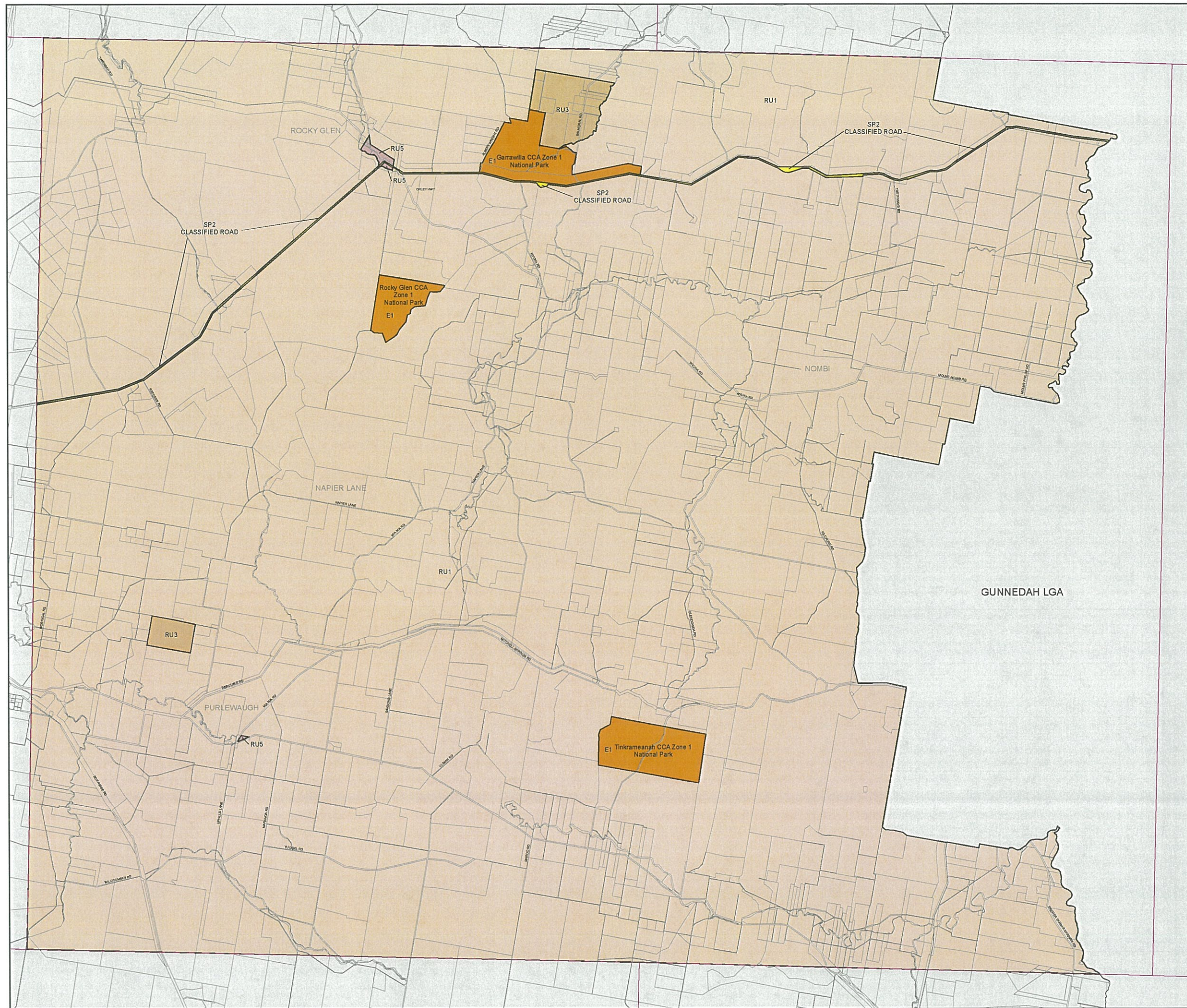
## Cadastre

Cadastre 16/06/11 © Land and Property Information (LPI)



Projection: GDA 1994  
MGA Zone 55

Map identification number: 8020\_COM\_LZN\_007\_160\_20131101





Warrumbungle  
Shire

Gunnedah  
Shire

**Appendix 18 – Aerial Photograph  
of the Warrumbungle LEP map  
LZN\_007 Area.**



**STEWART SURVEYS**

Pty Ltd Inc in NSW ABN 65 002 886 508

109 Conadilly Street

P.O. Box 592

GUNNEDAH NSW 2380

T 02 67422966 F 02 67420684

E office@stewartsurveys.com

Surveyors, Environmental & Landscape Architecture