



Making Connections:

Creating Community in Asynchronous Learning Environments

Kristen Sherman
Instructional Designer
2023

Agenda

01.
Learning Objective

02.
Why Create
Community in
Asynchronous Courses?

03.
Icebreakers

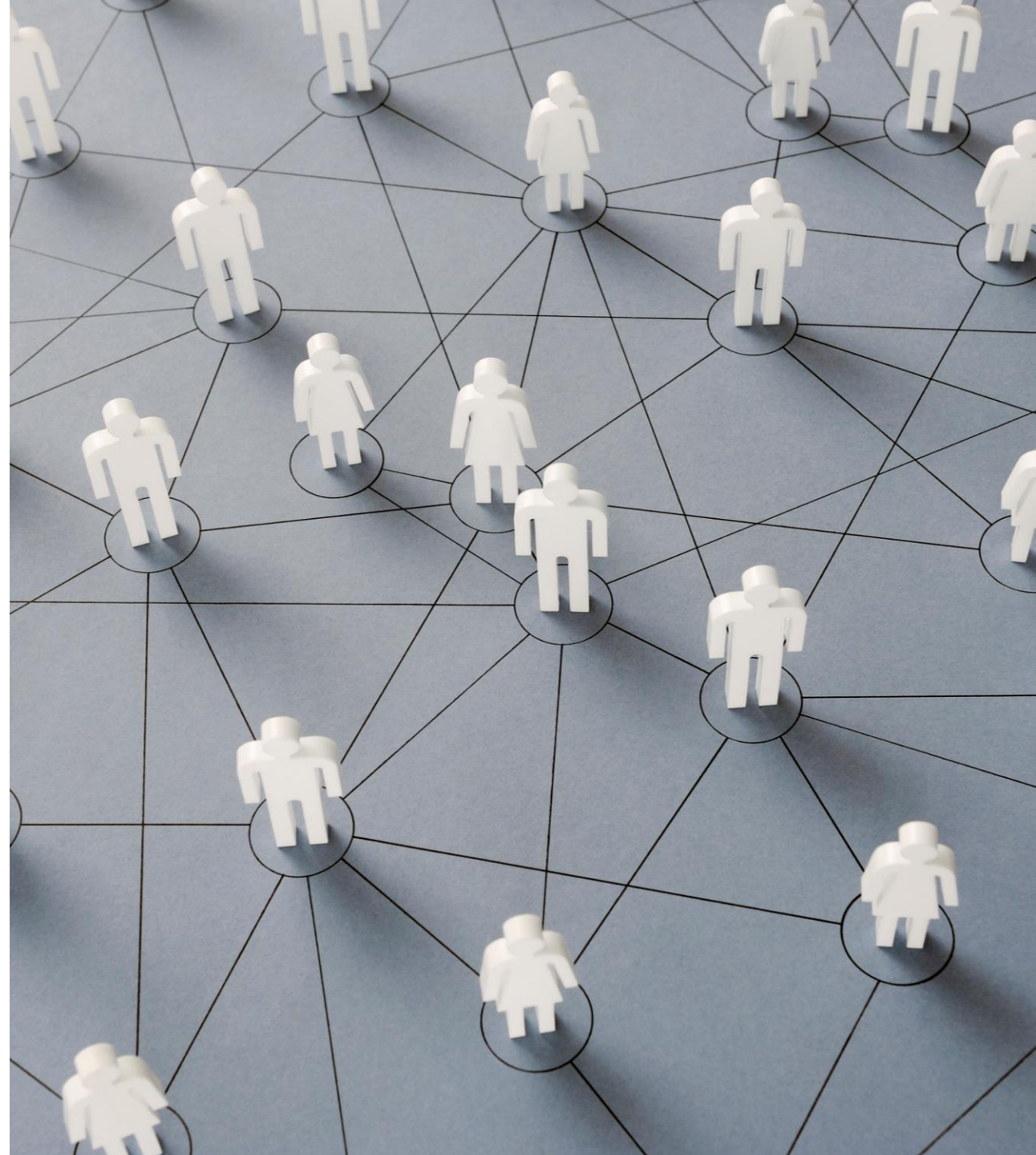
04.
Community-Building
Tools, Tips,
& Techniques

05.
Wrap-up & Questions



Learning Objective

Create a sense of community within asynchronous learning environments using community-building tools, tips, and techniques.





“

Feeling part of a community of learners has been shown to foster students' engagement and sense of belonging, leading to higher retention and achievement of learning outcomes.”

Prodgers, L., Travis, E. & Pownall, M. “It's hard to feel a part of something when you've never met people”: defining “learning community” in an online era. *High Educ* 85, 1219–1234 (2023). <https://doi.org/10.1007/s10734-022-00886-w>



ICEBREAKER

Slido.com Word Cloud Poll


Vote at Slido.com with code #1975424

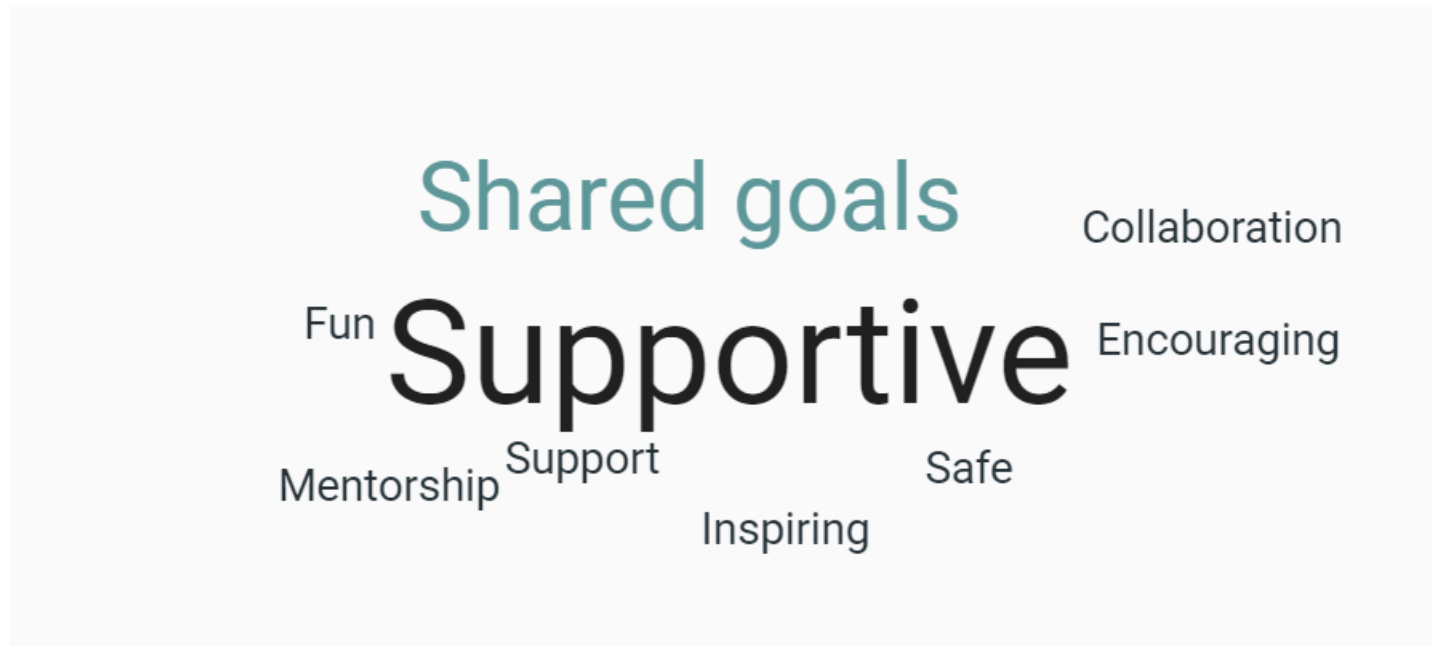
<https://app.sli.do/event/4WaBPFKaMHDVMGmHitzCjk>



slido

What words come to mind when thinking of effective communities of learning?

 What words come to mind when thinking of effective communities of learning? 4 👤 ...







Which part of an automobile do you most identify with and why?



What's Your Name Story?



Rose/Bud/Thorn Share



Video & Audio Intros

ICEBREAKERS

Introductions Using



A screenshot of a Padlet introduction card on a map of the United States. The card is titled "Stewartville, MN" and features a photo of a woman, Kristen Sherman. The text on the card reads: "Hi, I'm Kristen! Ask me about my cats Iggy & Olly!". The map shows the United States with various cities and states labeled. A search bar is visible in the top right corner, and a plus sign icon is in the bottom right corner. The interface includes a search bar at the top right, a user profile icon 'K' at the top right, and a vertical toolbar on the right side with icons for share, copy, refresh, notifications, play, settings, and a menu. At the bottom left, there are icons for full screen, search, and a menu. At the bottom right, there is a plus sign icon. The map shows the United States with various cities and states labeled. A search bar is visible in the top right corner, and a plus sign icon is in the bottom right corner.

Kristen Sherman • 1m

Introduce Yourself!

Place a pin in the location where you grew up or where you lived the longest. Include a photo or video introduction of yourself, if you like, and something you would want someone to ask you about.

Stewartville, MN 

Stewartville, MN

Stewartville, MN



Hi, I'm Kristen! Ask me about my cats Iggy & Olly!

Promote Diversity & Inclusion

Cultivate Safe & Inclusive Environment

Create Space to Share

Prioritize Individual Comfort Levels

Establish Community Guidelines

Foster Mutual Respect



Engage Reluctant Participants



Address Questions & Concerns Promptly

Adapt Language, Examples, & Content

Actively Participate & Provide Feedback

Foster Community



Create Small Groups

Set Up
Discussion Forums

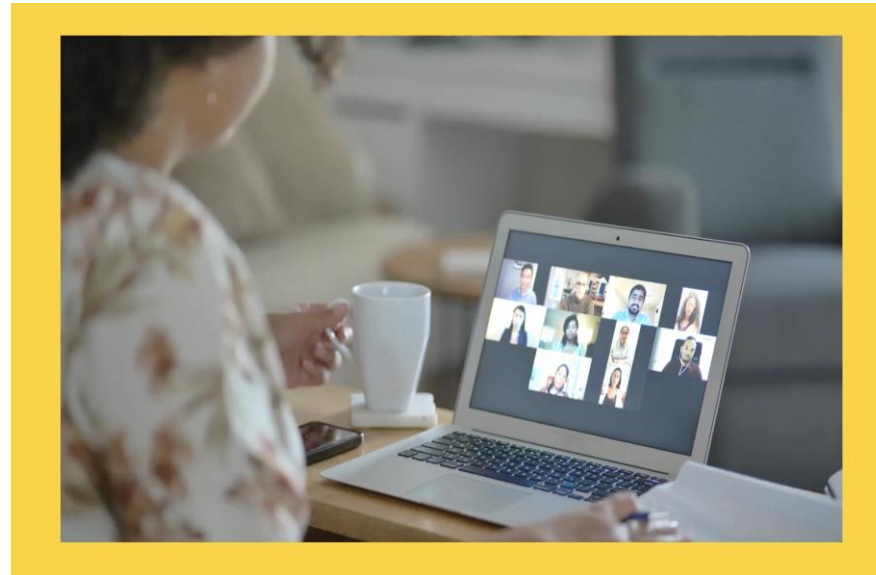
Encourage Reflection
& Peer Feedback

Support & Sustain Community

Schedule Regular Meetings & Check-ins

Celebrate Milestones & Share Challenges

Inspire Growth Mindset



Provide Formal & Informal Opportunities to Interact

Implement Peer Mentorship

Incorporate Gamification Elements

A collection of overlapping geometric shapes in teal, yellow, and green, including triangles and diamonds, scattered across the white background.

“

Create community-
building opportunities
but allow students to
create the community!

Wrap-up



01. Create a sense of community within asynchronous learning environments using community-building tools, tips, and techniques.

02. Importance of Creating Community in Asynchronous Courses

03. Tools





04. Tips

Use Icebreakers
Promote
Diversity & Inclusion
Engage
Reluctant Participants

05. Techniques

Foster, Support, and
Sustain Community
Key: Small Groups
Be Patient & Persistent



What is your
greatest
takeaway?

Thank You!

Questions?