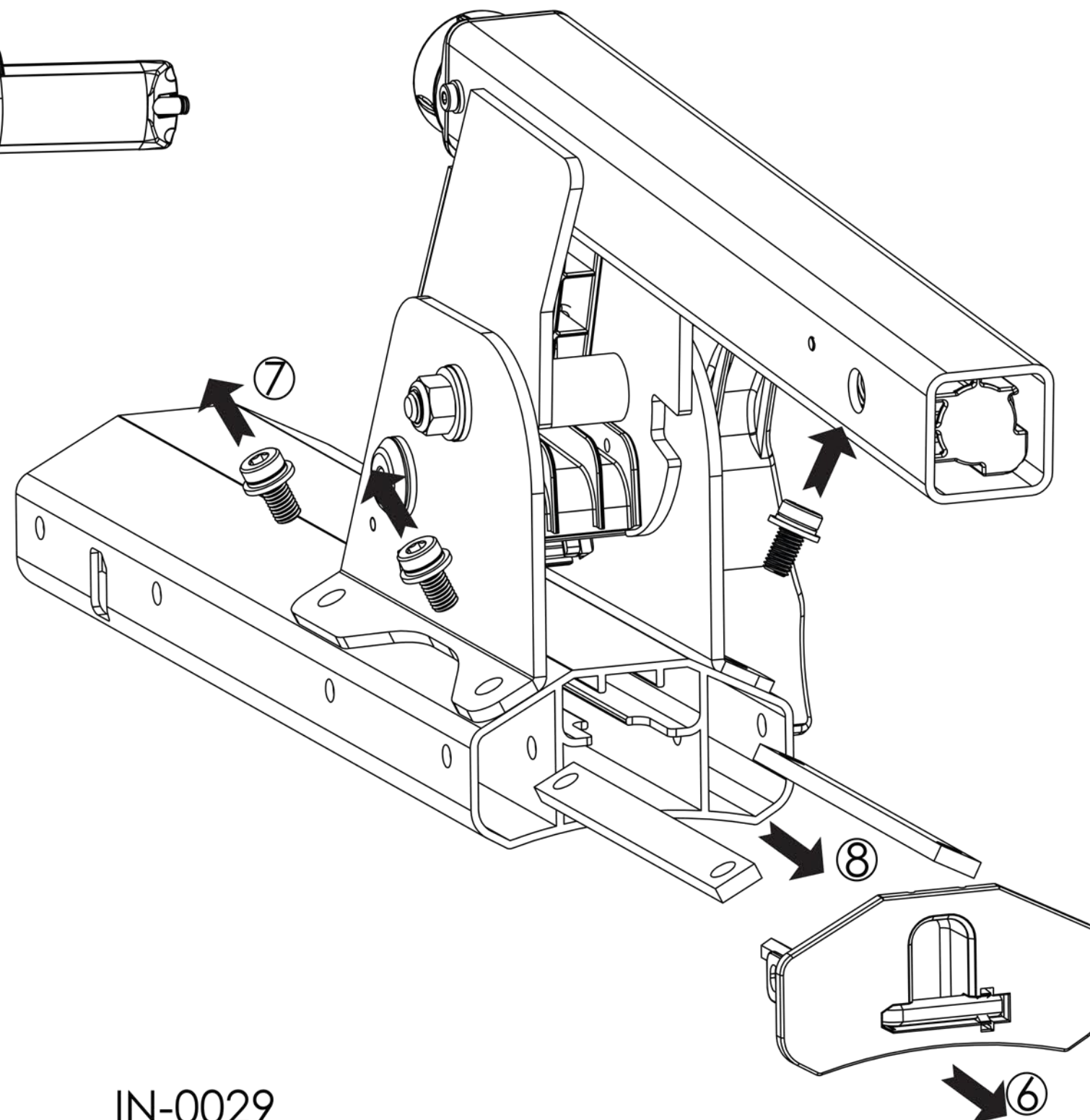
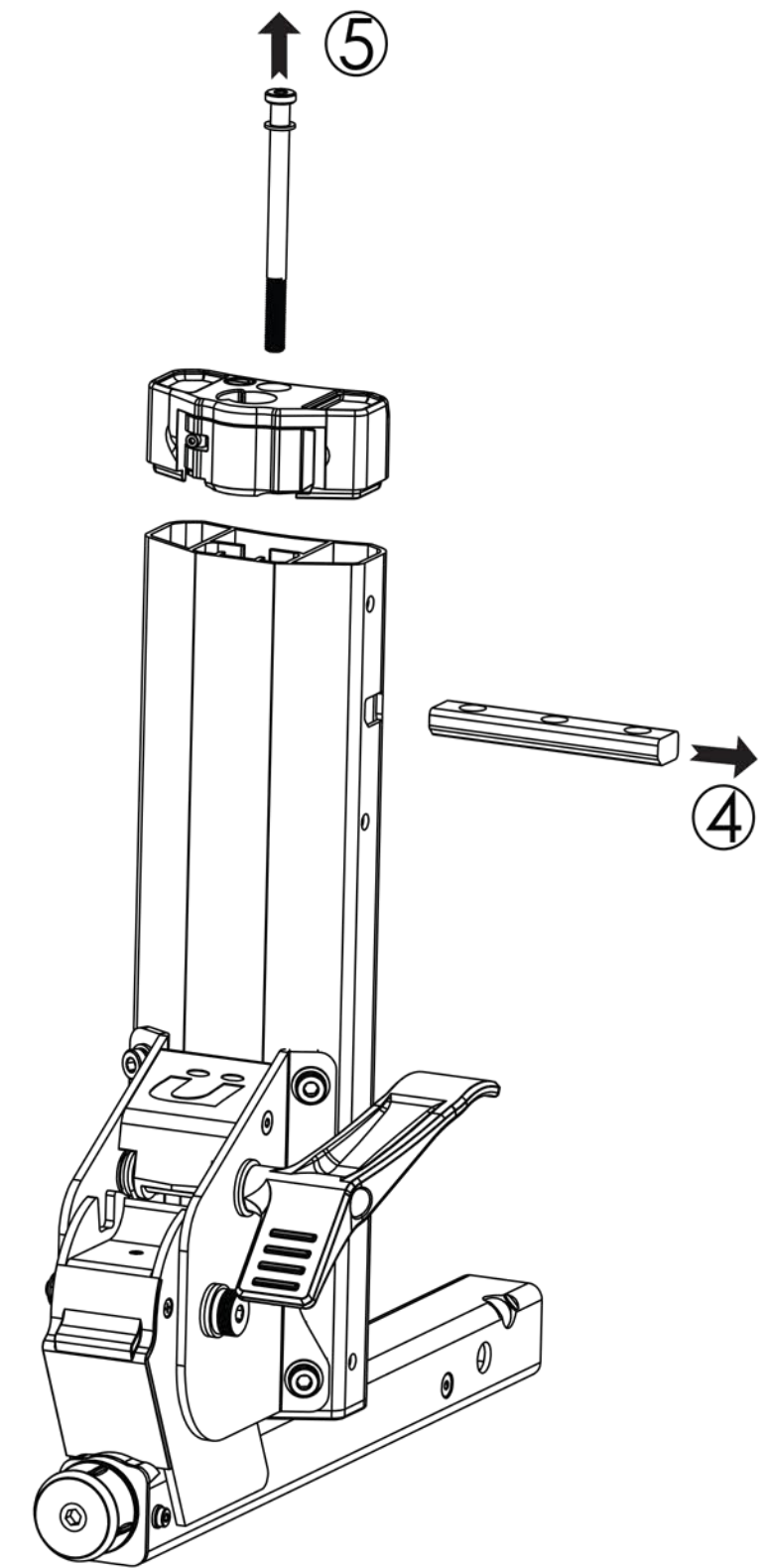
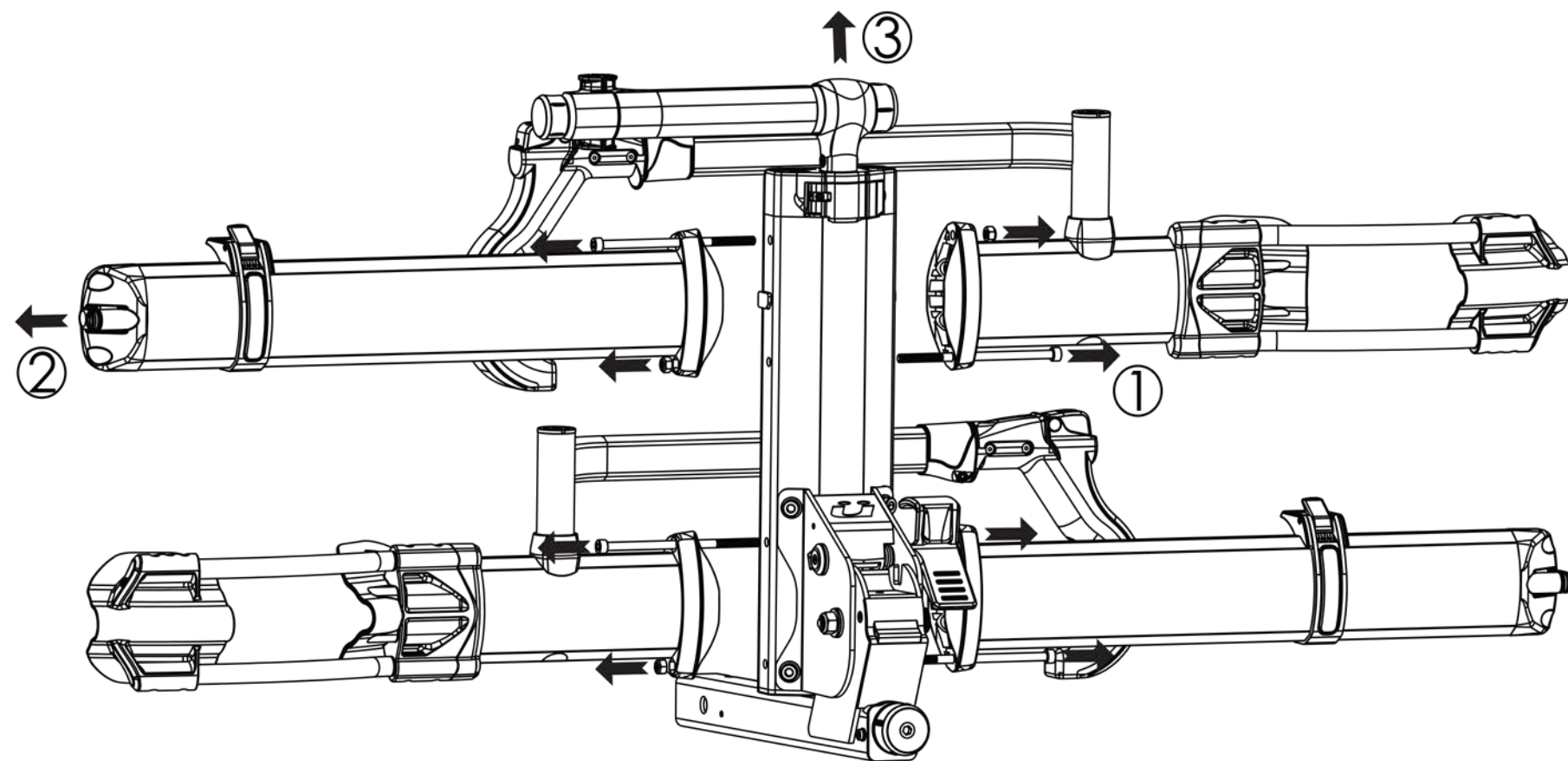


Tool Needed: 6mm Hex Key
Prep: Remove the Trail Doc from the rack.

..kuat®..
(koo-at)

1. Remove four 8mm bolts and nuts with a 6mm hex key on the trays.
2. Slide the trays straight out of the center beam.
3. Remove the Trail Doc.
4. Remove the 10mm bolt with a 6mm hex key from the Trail Doc cap. slide the Trail Doc cap up and out.
5. Slide the Trail Doc mounting bar out of the center beam.
6. Remove the rear cap off of the center beam.
7. Remove four 10mm bolts and washers from the pivot.
8. Slide the pivot mounting bars out of the back of the center beam.



IN-0029

1-877-822-5828
info@kuatracks.com