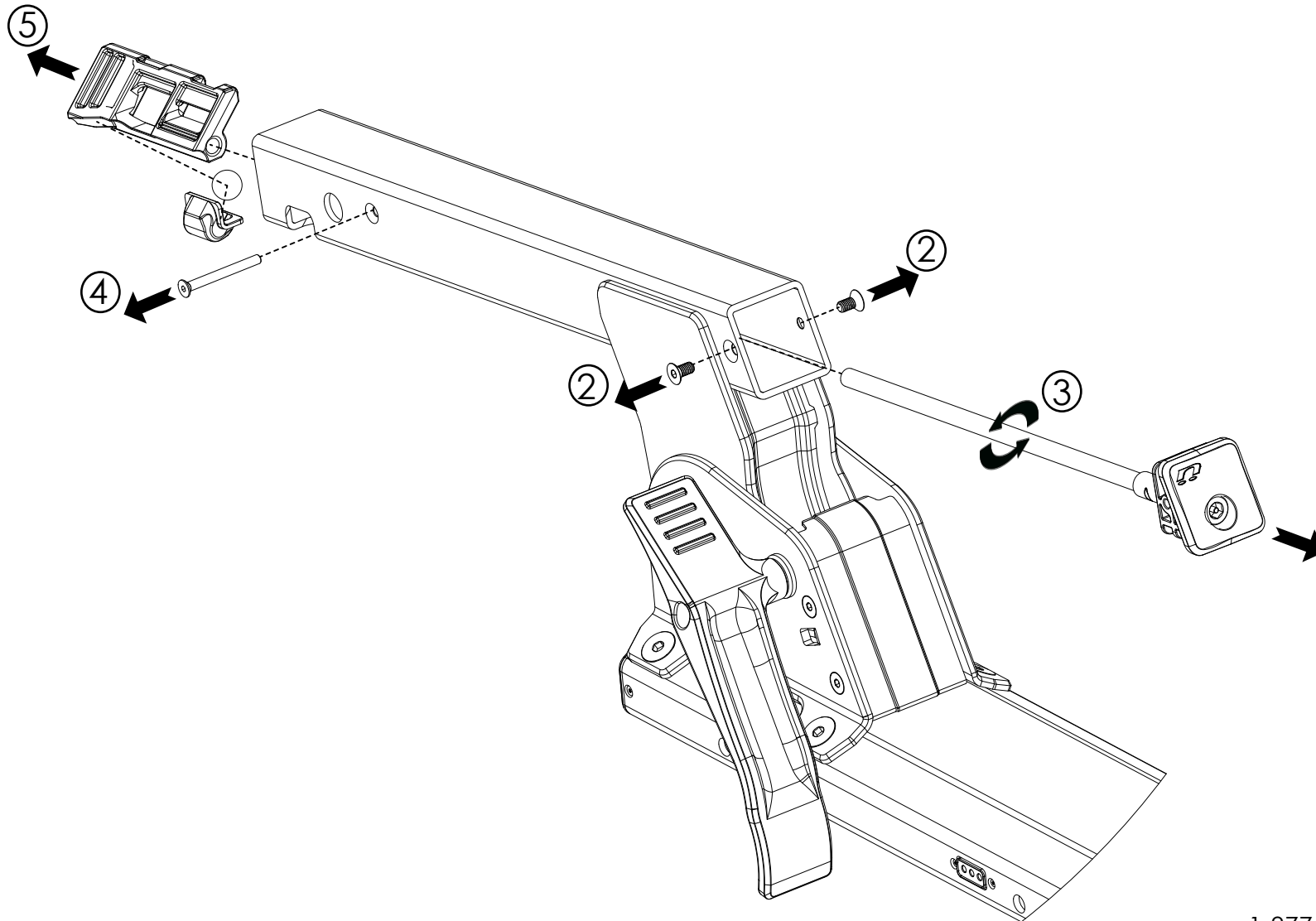


Tools Needed: 3mm, 4mm and 8mm Security Hex Key

kuat®

1. Flip the rack over.
2. Using the 4mm Hex Key, remove the M6 screws.
3. Using the 8mm Security Hex Key, loosen the cam bolt until the hitch cam is no longer attached, and pull the cam bolt assembly out of the hitch tube.
4. Using the 3mm Hex Key, remove the M5 screw holding the hitch cam in.
5. Remove the hitch cam, steel ball, and cam pad out the back of the hitch tube.
6. Repeat these steps in reverse to install the new one.



IN-0085

1-877-822-5828
info@kuatracks.com