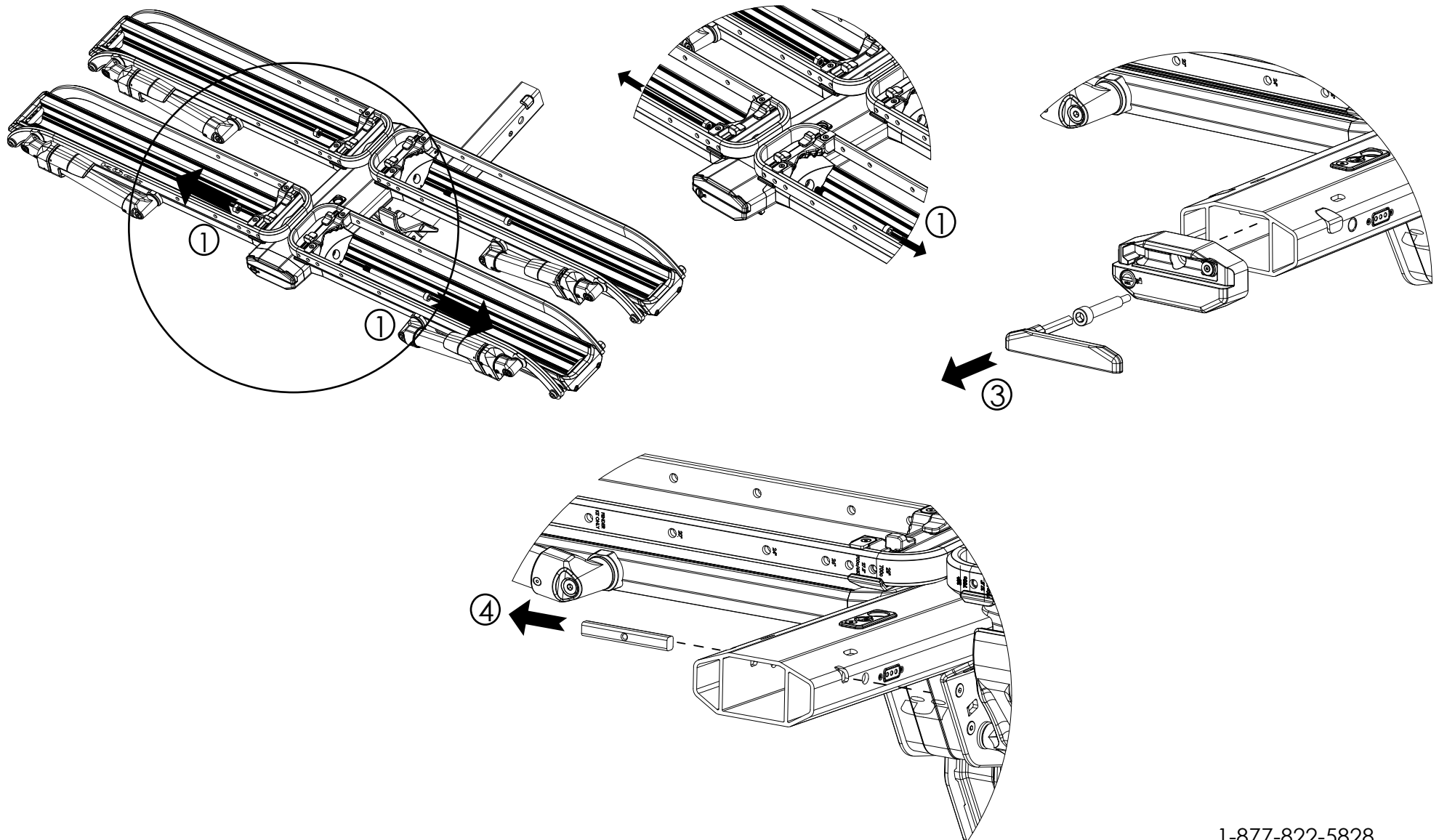


Tools Needed: 8mm Security Hex Key

1. Using the 8mm Security Hex Key, remove the 10mm bolt and nut from each tray.
2. Remove tire trays by lifting up and out.
3. Using the 8mm Security Hex Key, remove the center beam end cap.
4. Slide out the End Cap Bar from either side.
5. Repeat these steps in reverse to install the new one.

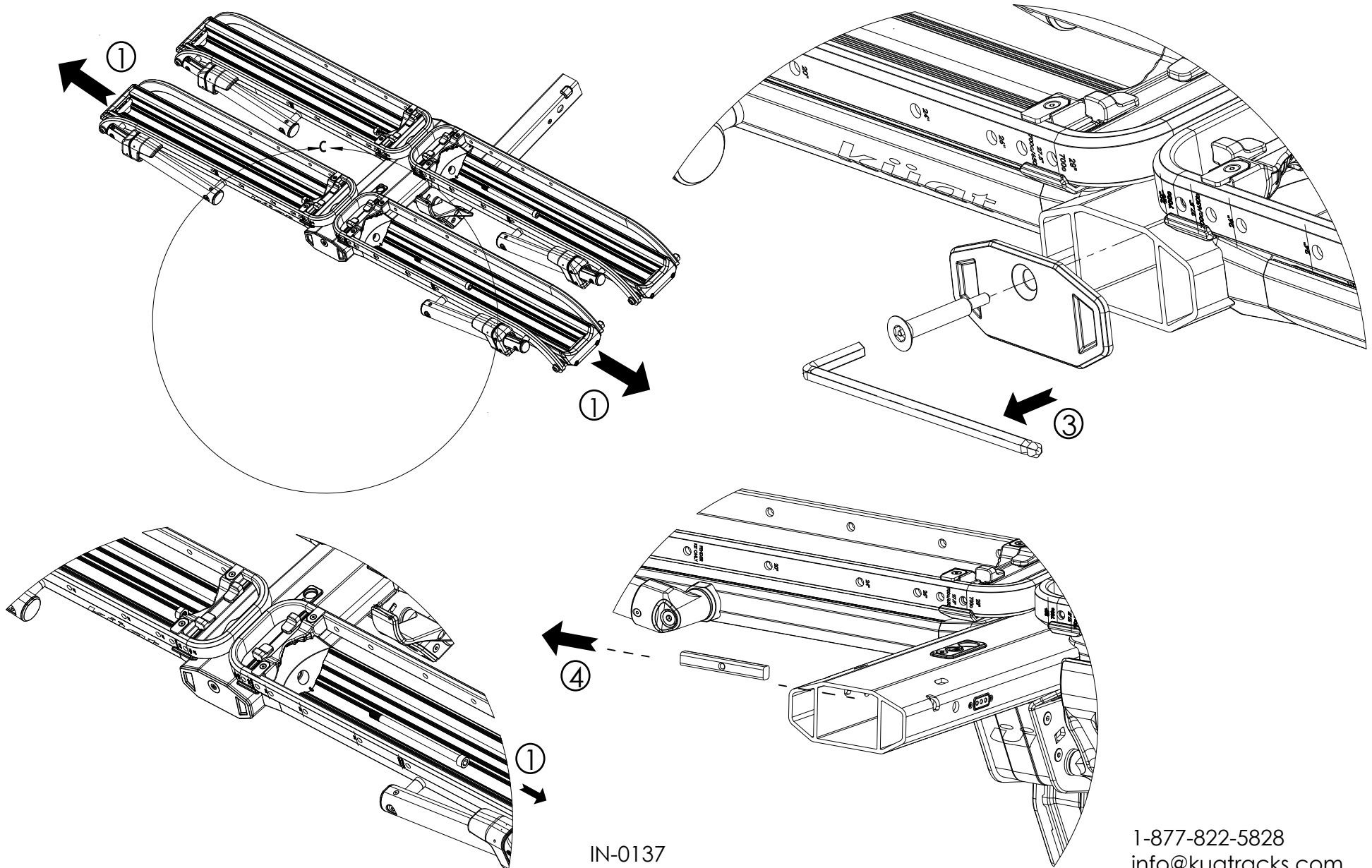


Tools Needed: 8mm Security Hex Key

1. Using the 8mm Security Hex Key, remove the 10mm bolt and nut from each tray.
2. Remove tire trays by lifting up and out.
3. Using the 8mm Security Hex Key, remove the center beam end cap.
4. Slide out the End Cap Bar from either side.
5. Repeat these steps in reverse to install the new one.

kuat®

*For Piston Pro only



IN-0137

1-877-822-5828
info@kuatracks.com