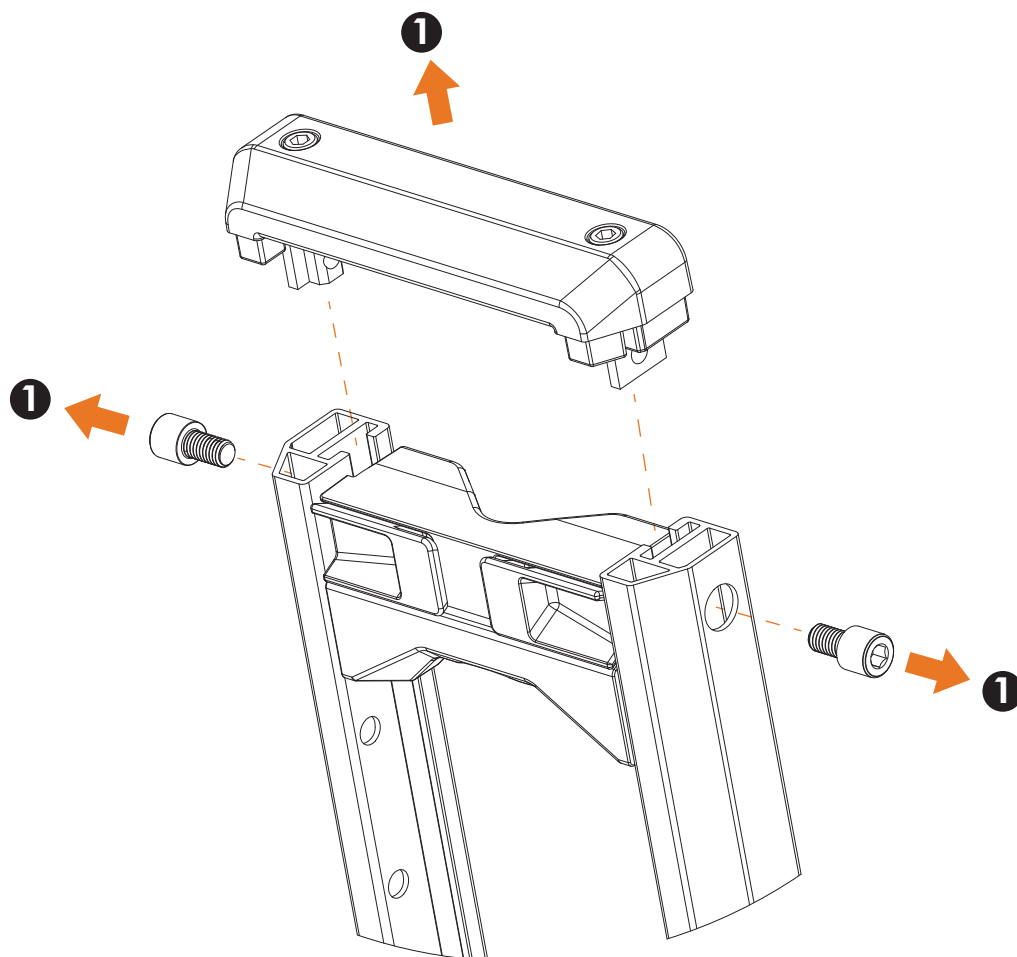


Tools Needed:

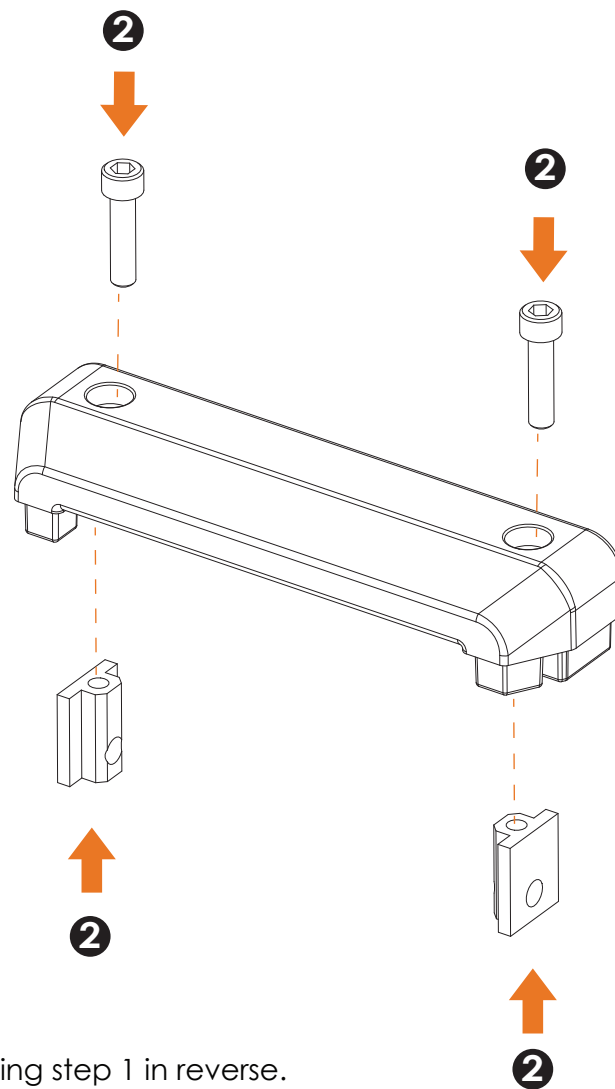
5mm Hex Key, 6mm Hex Key

kuat[®]

- ① Open the tire arm. Using the 6mm Hex Key, remove the two M8 bolts connecting the tire arms to the tire arm bridge. The tire arm bridge can now be removed.



- ② Using the 5mm Hex Key, install the Tire Bridge T-Nuts and M6 bolts to the new Tire Arm Bridge, but do not completely tighten.



- ③ Install the new Tire Arm Bridge by following step 1 in reverse. Torque the M6 screws to 12 Nm and the M8 screws to 20 Nm.