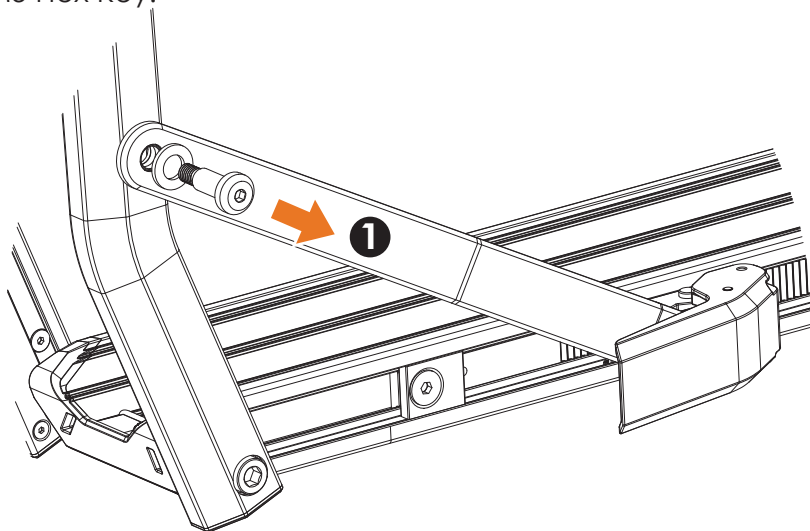


Tools Needed:

5mm Hex Key, 6mm Hex Key, 8mm Hex Key

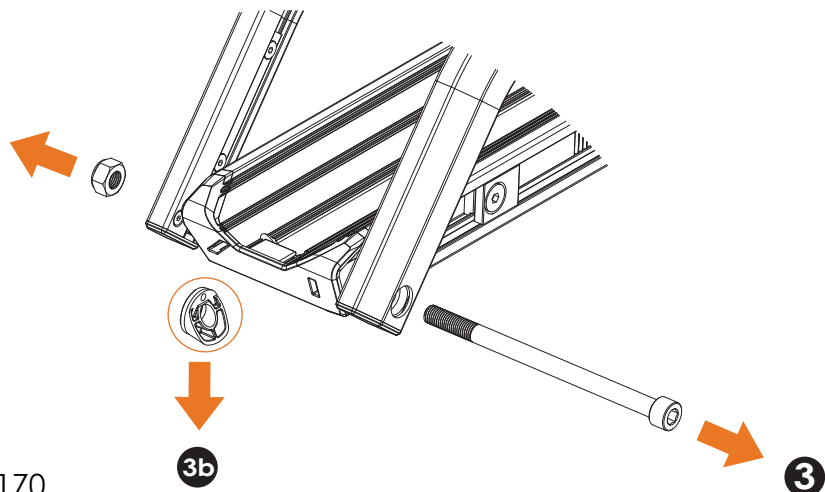
kuat®

- ① Remove Linkage Shoulder Bolt and washer with M5 Hex Key.

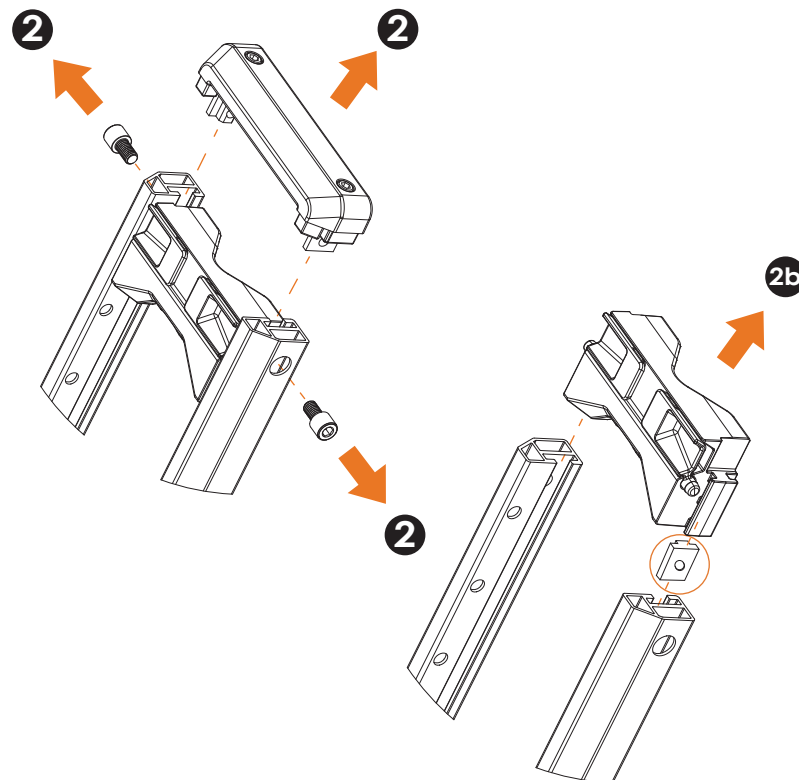


- ③ Open the tire arm. Using the 8mm Hex Key, remove the Pivot Arm Bolt connecting the tire arms to the tray.

- ③b Remove the Arm to Tray Cap.



- ② Remove Tire Arm Bridge from Tire Arms with M6 bolts and Tire Arm Bridge Mounting Nuts attached using the 6mm Hex Key.
- ②b Remove the Tire Chock and Linkage T-Nut from the T-Channels.



- ④ Install the new Tire Arm and reinsert the Tire Arm Bridge and hardware by following steps 1, 2 & 3 in reverse. Torque the Tire Arm Linkage Bolt to 20 Nm., torque the two M6 screws to 12 Nm and torque the Tire Arm Pivot Bolt to 16 Nm.