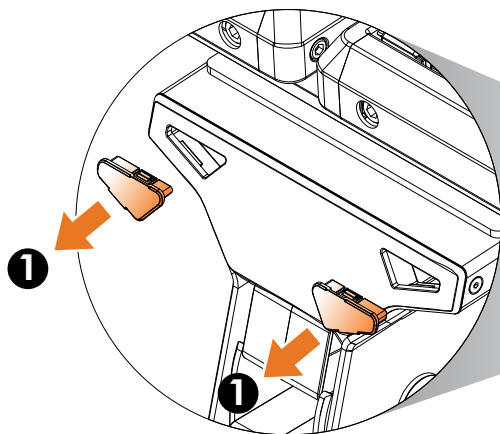


Tools Needed:

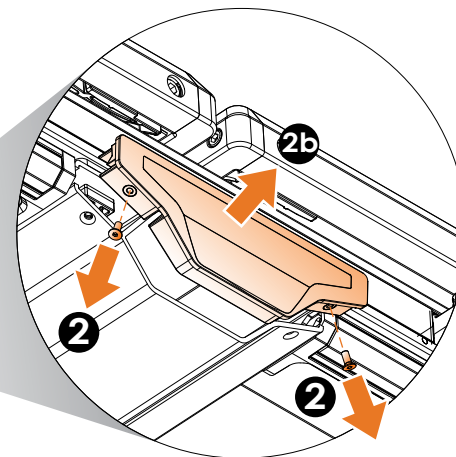
2.5mm Hex Key, Flathead Screwdriver (not included)

kuat®

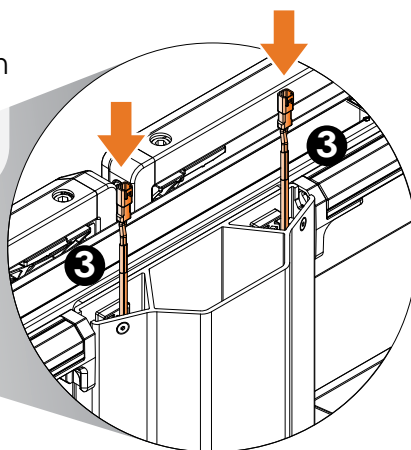
- ① Using a small flathead screwdriver, pry the small cover caps out of the rear beam cap. **Tip: pry from the bottom first.** If replacing existing wiring harness, disconnect harness from extension cables and remove.



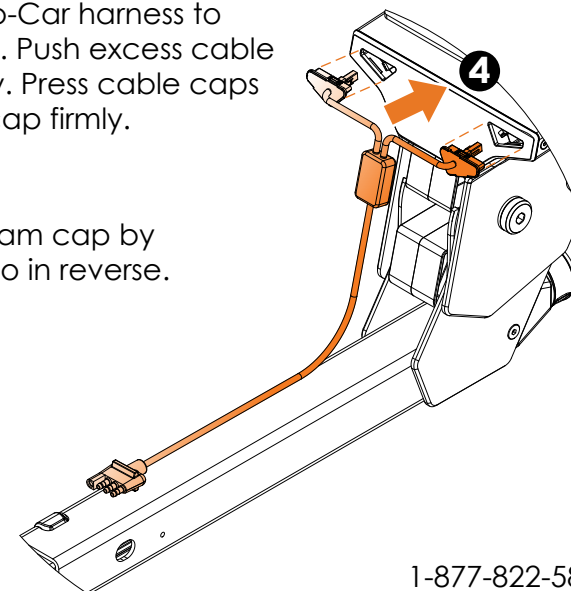
- ② Using the 2.5mm Hex Key, remove the two(2) screws holding the front beam cap.
②b Slide the end cap out of the beam.



- ③ Place rack into stowed position. If replacing existing harness, disconnect extension cables from lights. Feed the new extension cables down into each side of the beam. Connect the extension cables to each light (if installing license plate mount, see instructions for that kit).
③b Pull excess cable out of rear of beam.



- ④ Connect Rack-to-Car harness to extension cables. Push excess cable into beam cavity. Press cable caps into rear beam cap firmly.
⑤ Reinstall front beam cap by following step two in reverse.



IN-0210

1-877-822-5828
info@kuatracks.com