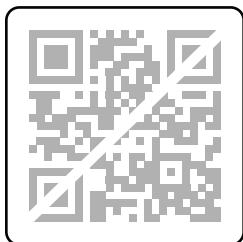


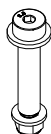
# TRANSFER™ v2

**ONE BIKE**

INSTALLATION



## Parts



(1) Pivot Bolt Assembly

- Pivot Bolt
- Pivot Nut
- M16 Washer
- M12 Washer



(1) Locator Bolt



(1) M6 x 85



(1) Spacer



(1) M6 x 90



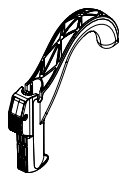
(2) M6 x 60 Flathead



(2) M6 Nut



(2) M6 x 65



(1) Tire Hook



(1) Arm Knuckle



(1) Locking &  
(1) Non-Locking  
Endcaps



(2) M4 x 12



(1) Plates



(1) Hitch Pin



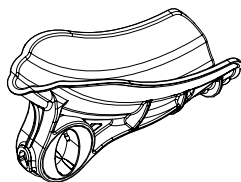
(1) Tire Hook Arm



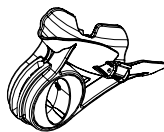
(1) Tire Strap



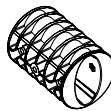
(1) Cotter Pin



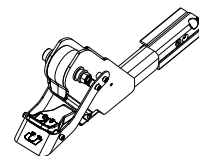
(1) Front Tire Cradle



(1) Rear Tire Cradle



(1) Arm Puck

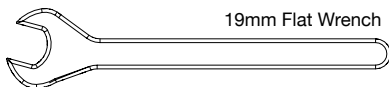


(1) Hitch Shank Assembly

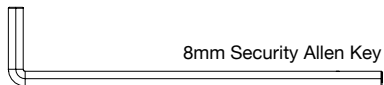


(2) Lock Keys

## Tools



19mm Flat Wrench



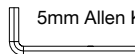
8mm Security Allen Key



2.5mm Allen Key



4mm Allen Key



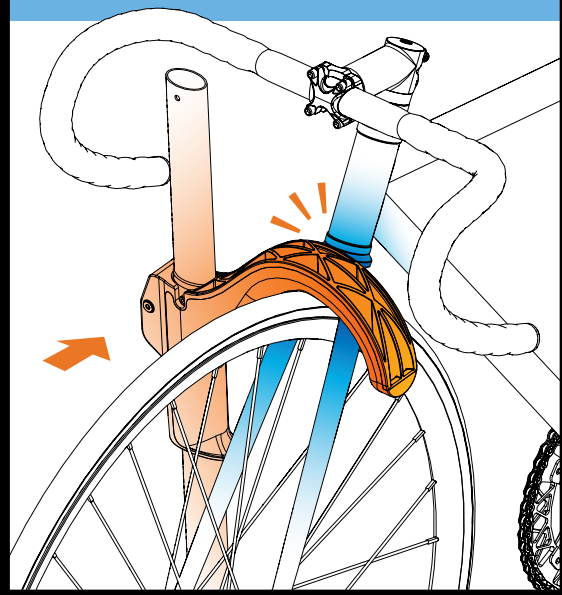
5mm Allen Key



## IMPORTANT

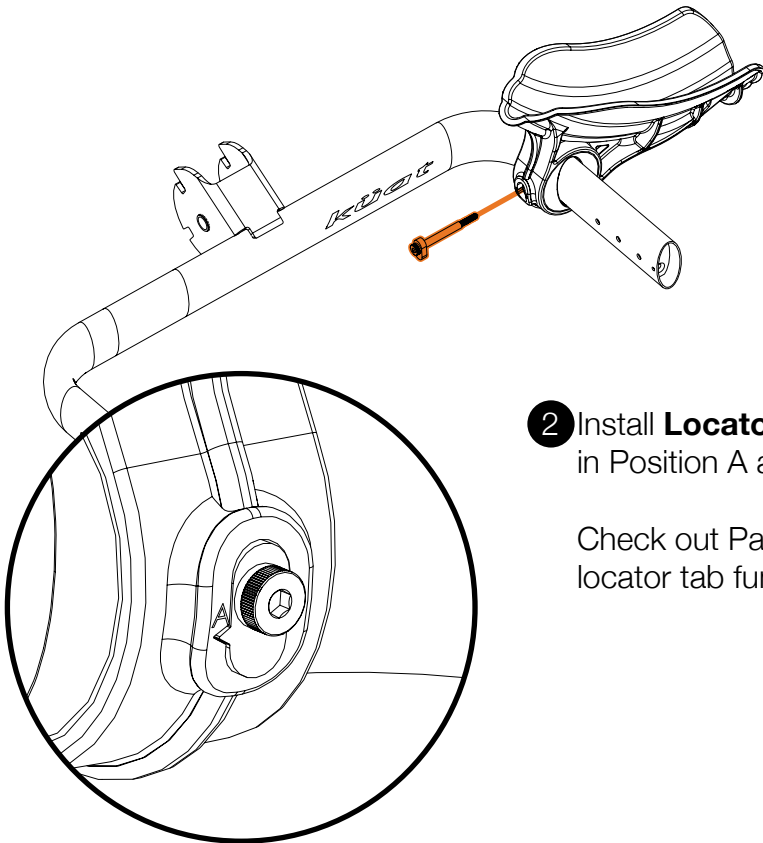
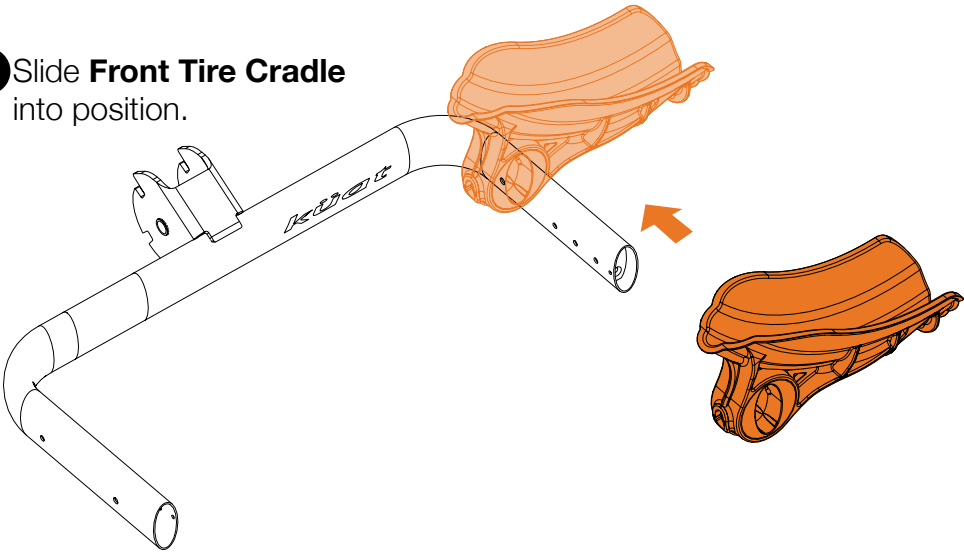
When loading a bicycle, ensure the tire hook is placed as close to the bicycle fork as possible.

Placing the tire hook further away increases the risk of bicycle becoming unsecured in the rack, which may result in falling and damage.



# Assembly

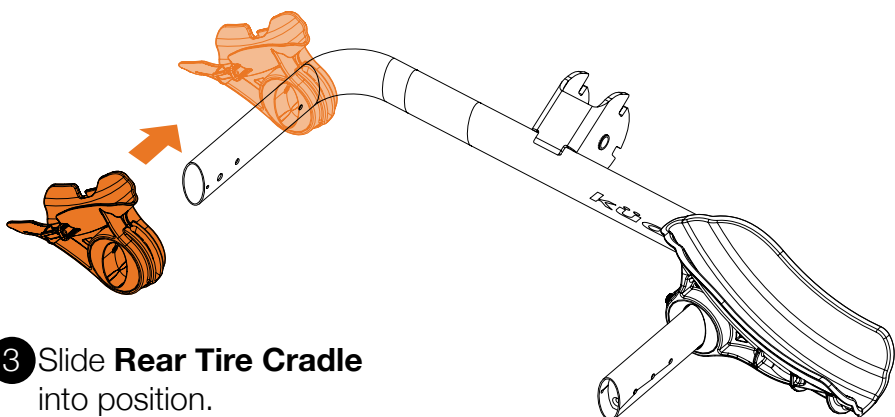
- 1 Slide **Front Tire Cradle** into position.



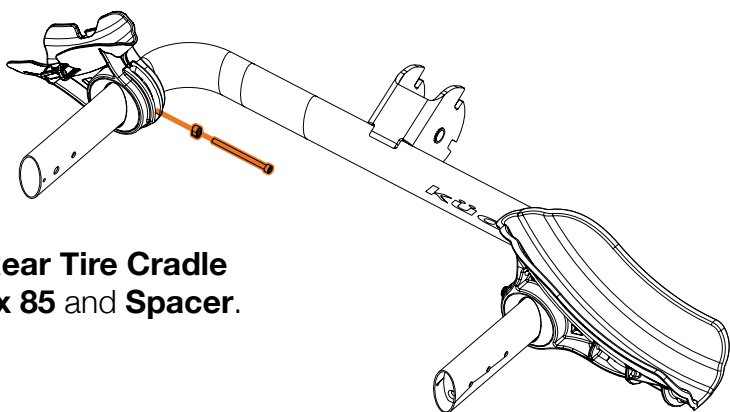
- 2 Install **Locator Bolt** in Position A as shown.

Check out Page 11 for locator tab functionality.

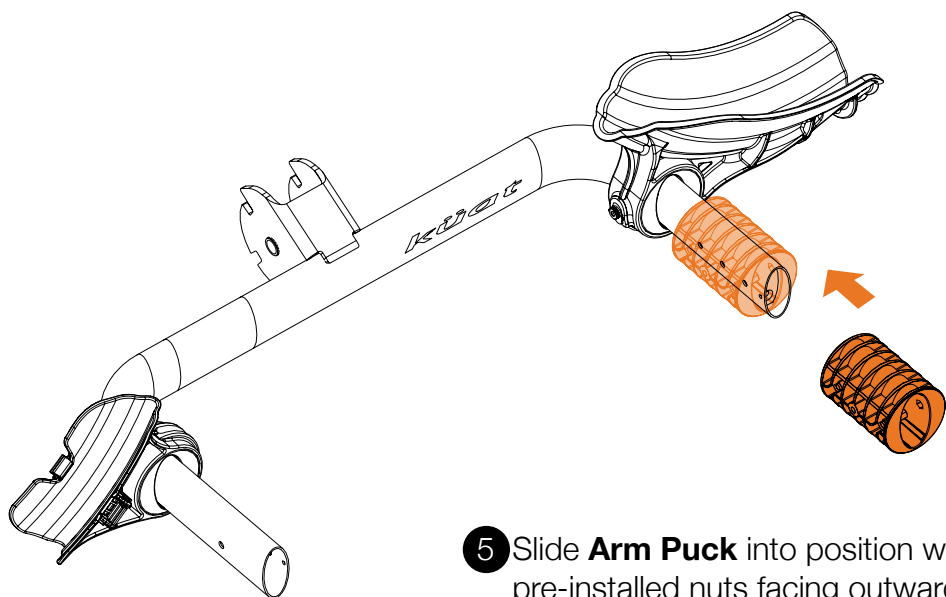




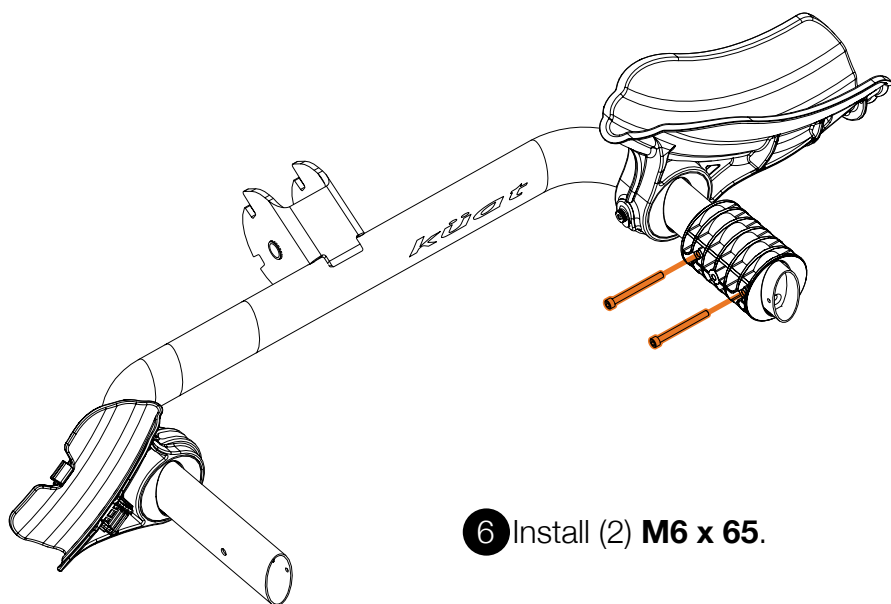
- 3 Slide **Rear Tire Cradle** into position.



- 4 Secure **Rear Tire Cradle** with **M6 x 85** and **Spacer**.



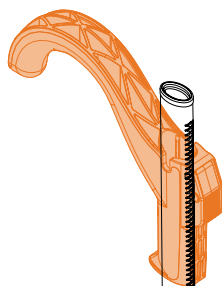
- 5 Slide **Arm Puck** into position with pre-installed nuts facing outward.



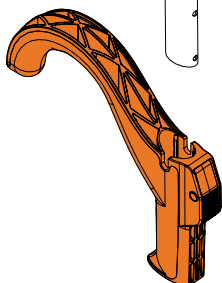
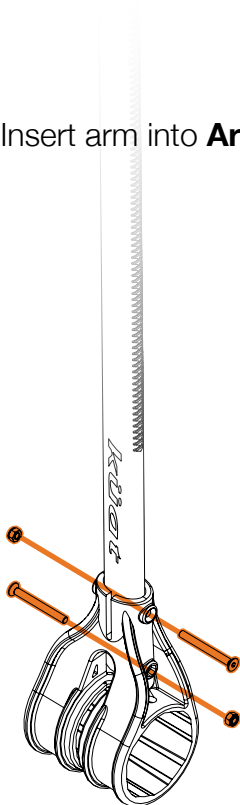
- 6 Install (2) **M6 x 65**.

# Tire Hook Arm Assembly

- 7 Push button on handle and slide **Tire Hook** up the **Tire Hook Arm** from the bottom.



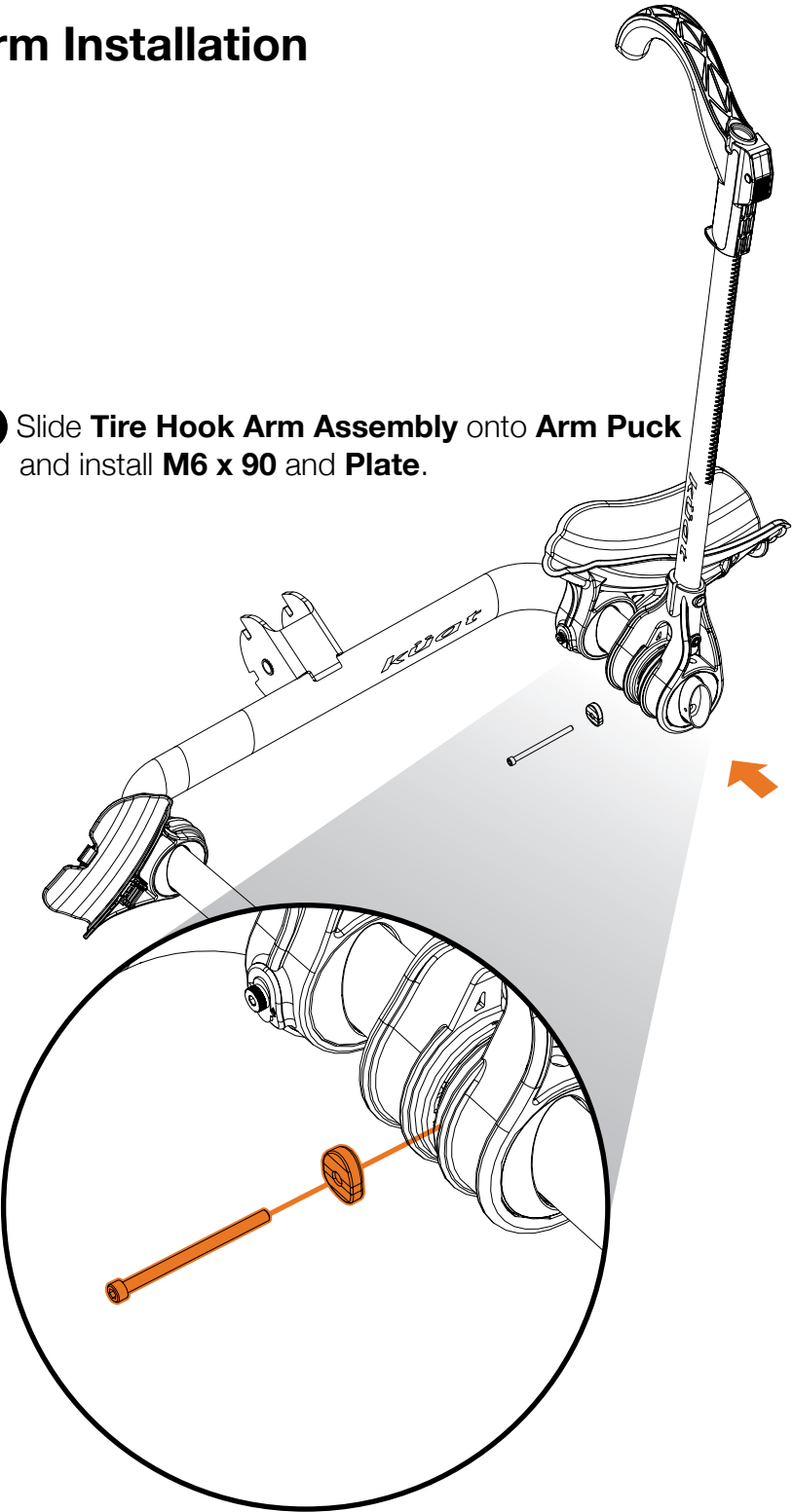
- 8 Insert arm into **Arm Knuckle**.



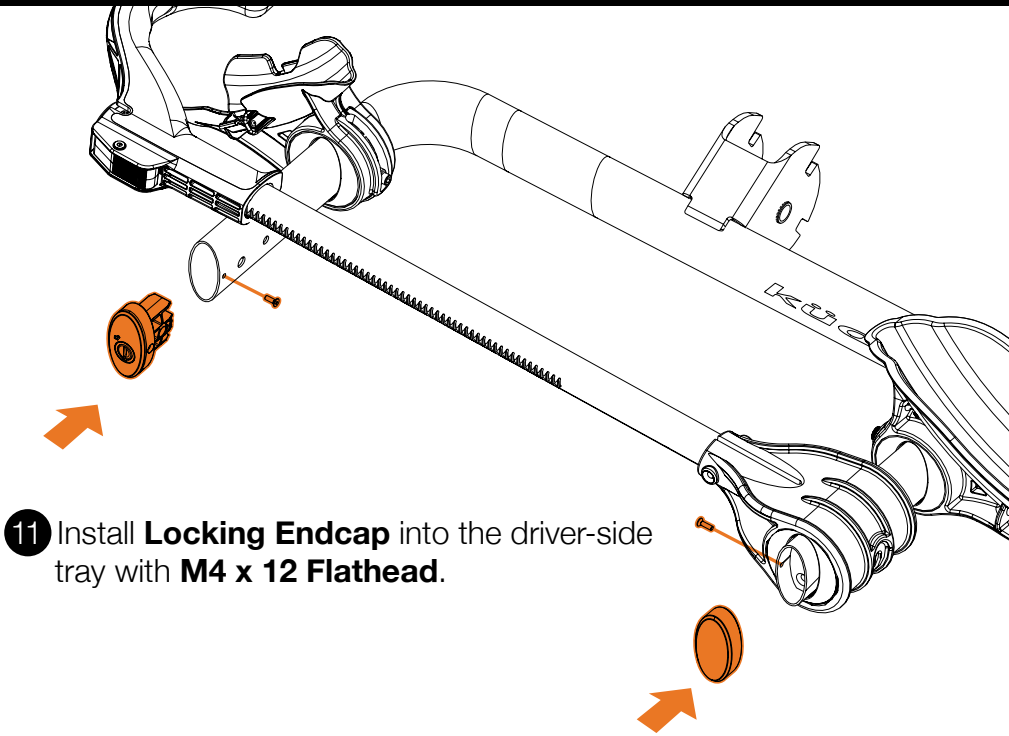
- 9 Install (2) **M6 x 60 Flathead bolts** and (2) **M6 nuts**.

# Arm Installation

- 10 Slide **Tire Hook Arm Assembly** onto **Arm Puck** and install **M6 x 90** and **Plate**.



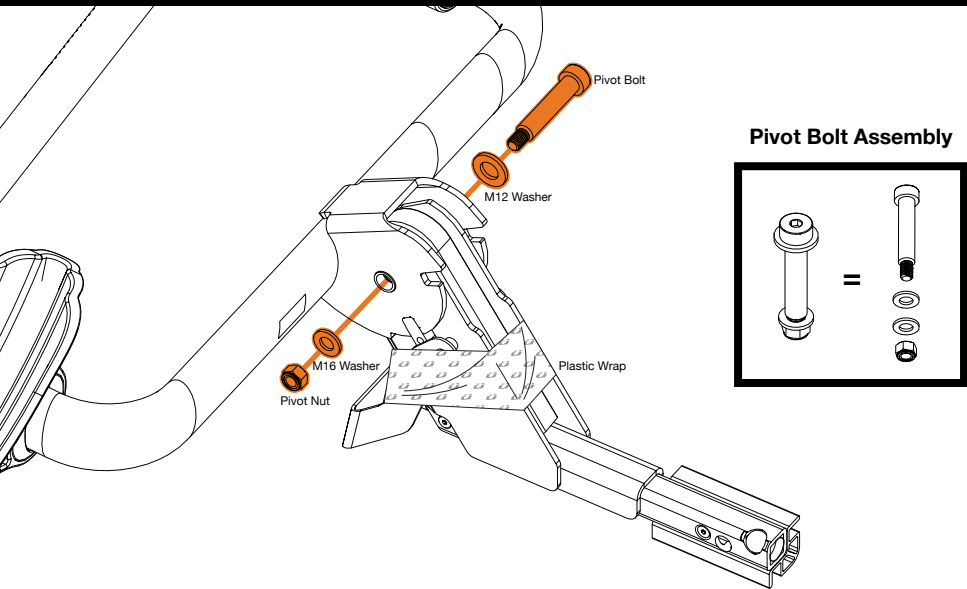
# Endcap Installation



- 11 Install **Locking Endcap** into the driver-side tray with **M4 x 12 Flathead**.

- 12 Install **Non-Locking Endcap** into the passenger-side tray with **M4 x 12 Flathead**.

# Hitch Shank Assembly

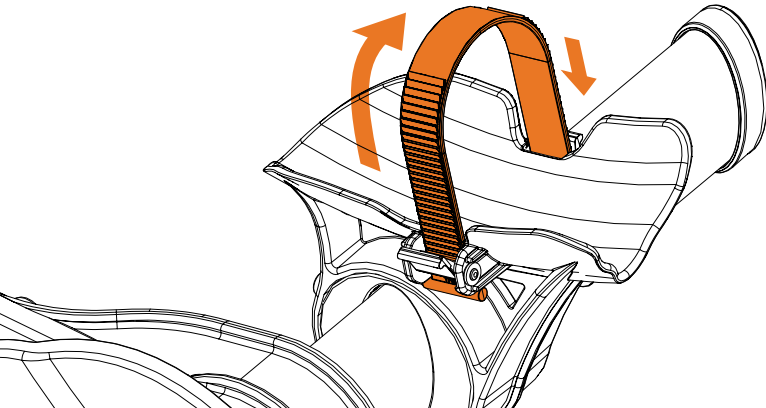


- 13 Install **Hitch Shank Assembly** into the rear of bike tray using the provided **Pivot Bolt**, **Pivot Washers**, and **Pivot Nut**.

! After assembling hitch shank, remove clear plastic wrap to engage foot pivot tension.

## Tire Strap Installation

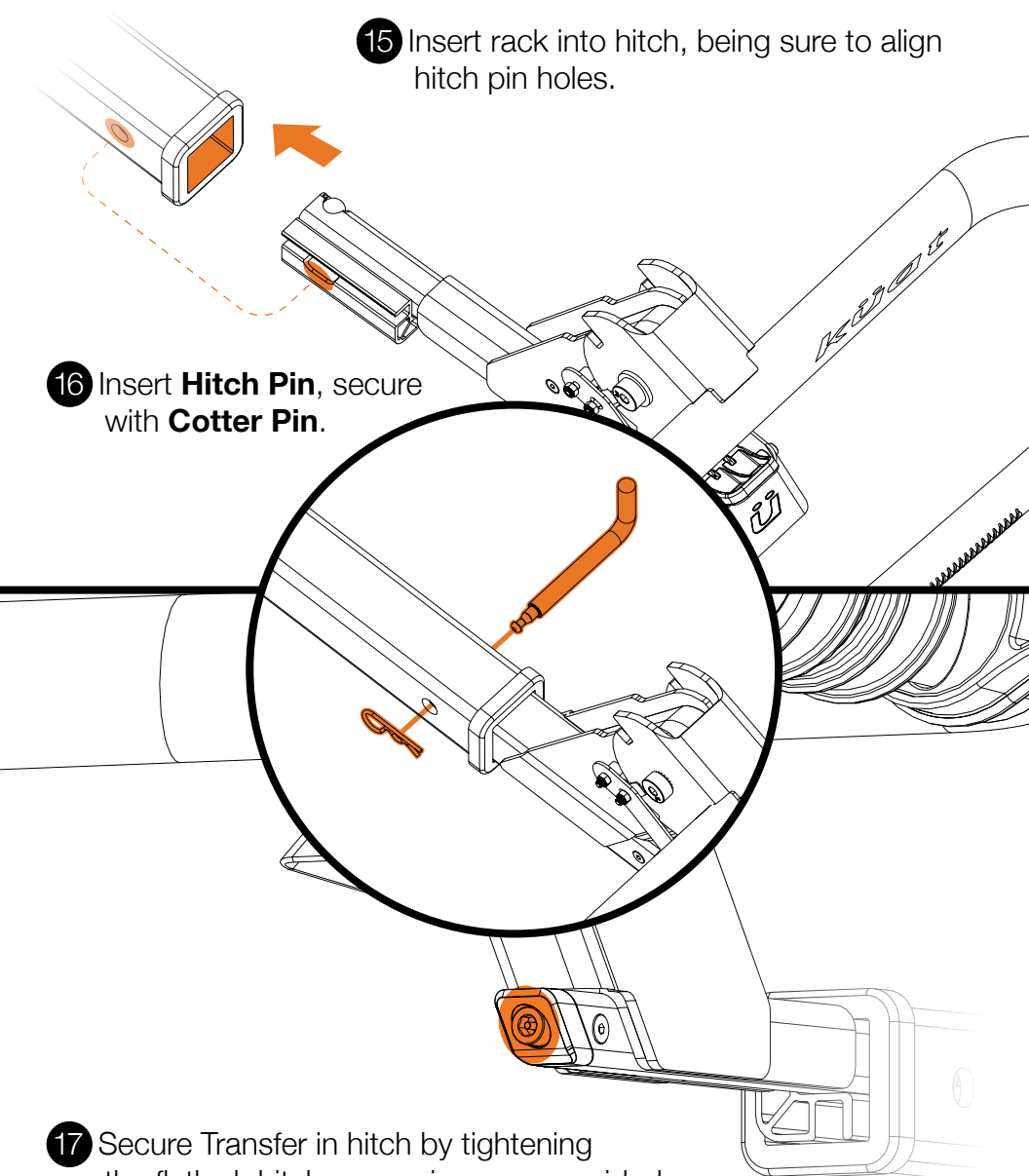
- 14 Thread **Tire Strap** through both ratchets. Open side should face endcaps.



# Vehicle Installation

- 15 Insert rack into hitch, being sure to align hitch pin holes.

- 16 Insert **Hitch Pin**, secure with **Cotter Pin**.



- 17 Secure Transfer in hitch by tightening the flatlock hitch cam using your provided **8mm Security Allen Wrench**.

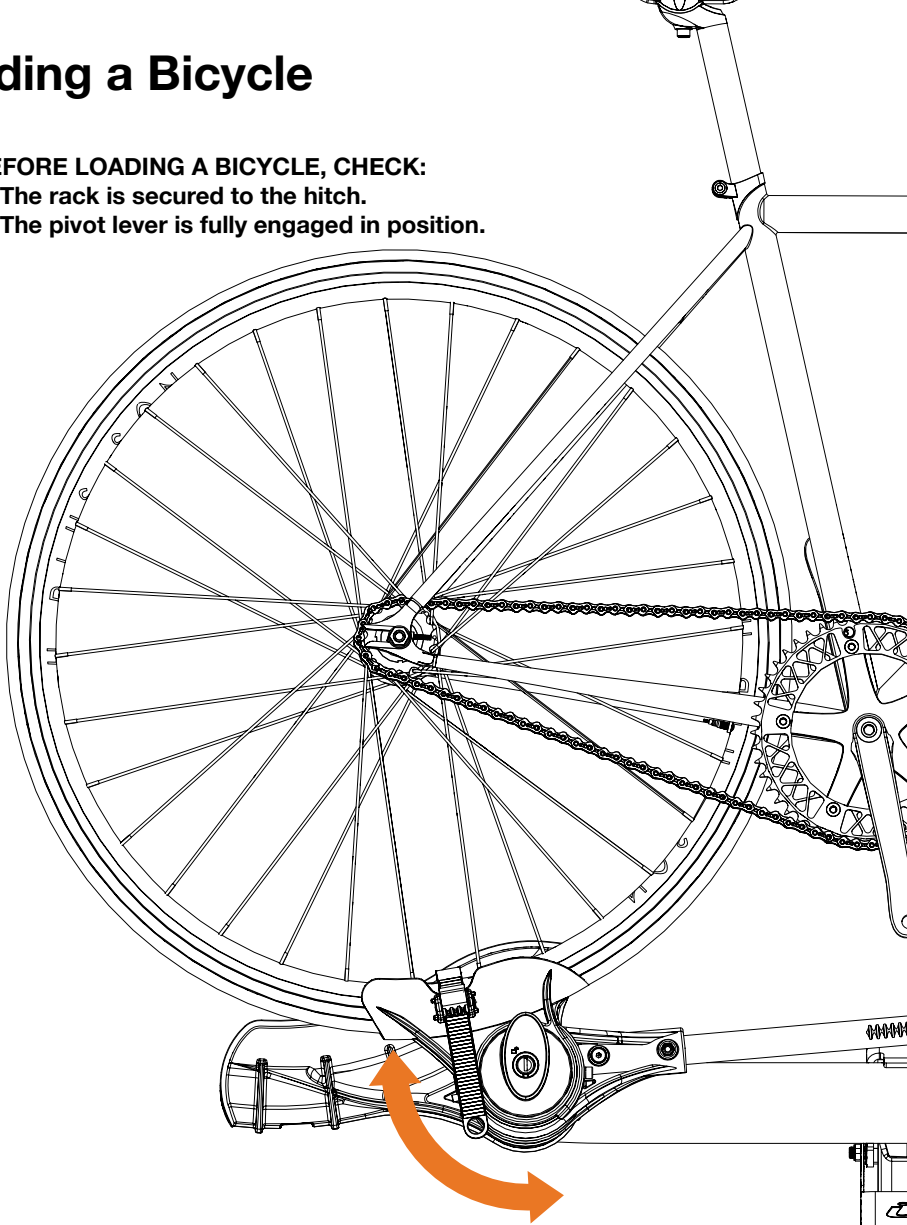


**KEEP THE 8mm SECURITY ALLEN IN A SAFE, CONVENIENT LOCATION.**

# Loading a Bicycle

## ! BEFORE LOADING A BICYCLE, CHECK:

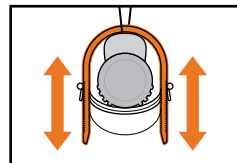
- The rack is secured to the hitch.
- The pivot lever is fully engaged in position.



## STEP 2

Adjust rear tire cradle position to fit bicycle. Tighten tire strap evenly.

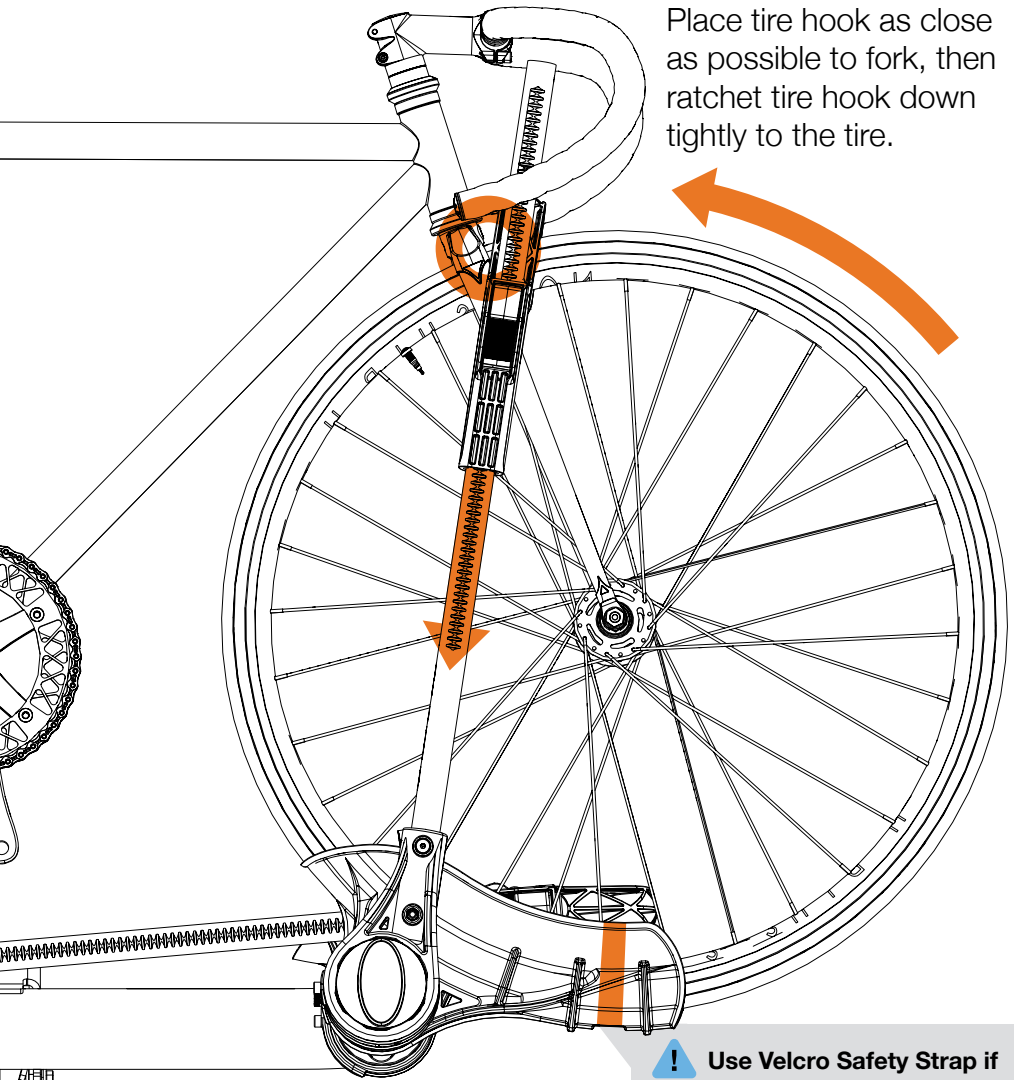
- ! Tire straps can be adjusted independently from each side for a more secure fit on smaller wheels.





## STEP 1

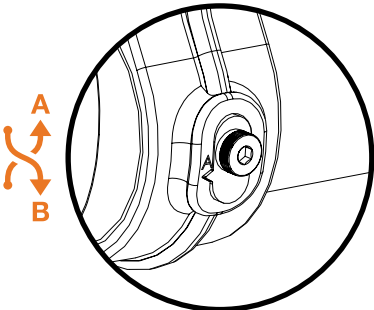
Place tire hook as close as possible to fork, then ratchet tire hook down tightly to the tire.



**!** Use Velcro Safety Strap if any of the following apply:

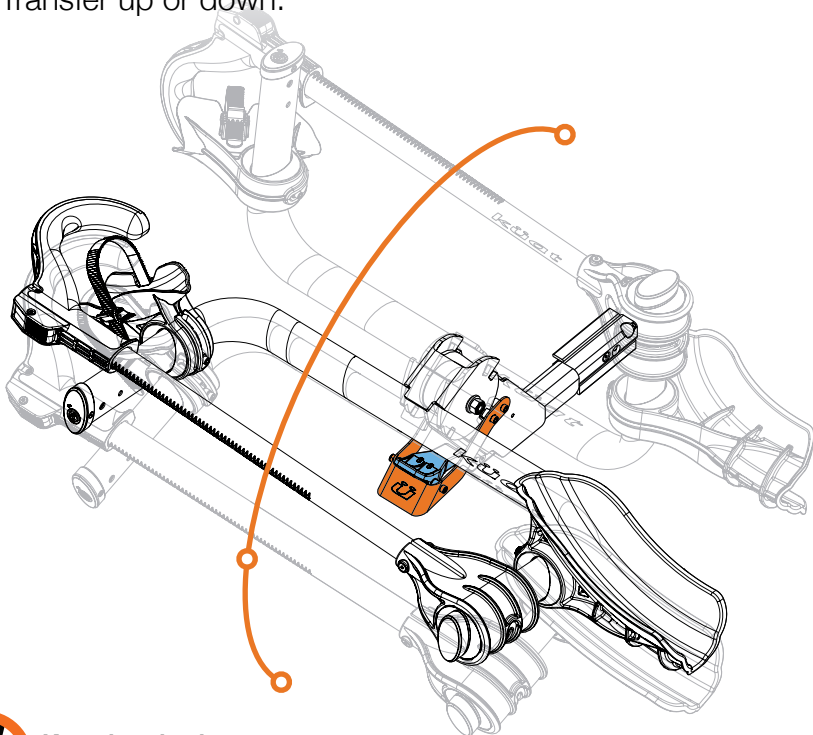
- Bike weight exceeds 35 lbs
- Wheelbase exceeds 46"
- Tire size exceeds 3.25"

Thread strap through wheel and under tire tray in position shown.



**!** Front tire cradle A/B Bolt Tabs can be reversed to adjust the pitch of the bike for a better fit or to eliminate interference between multiple bikes.

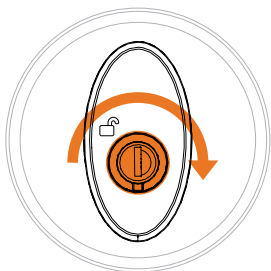
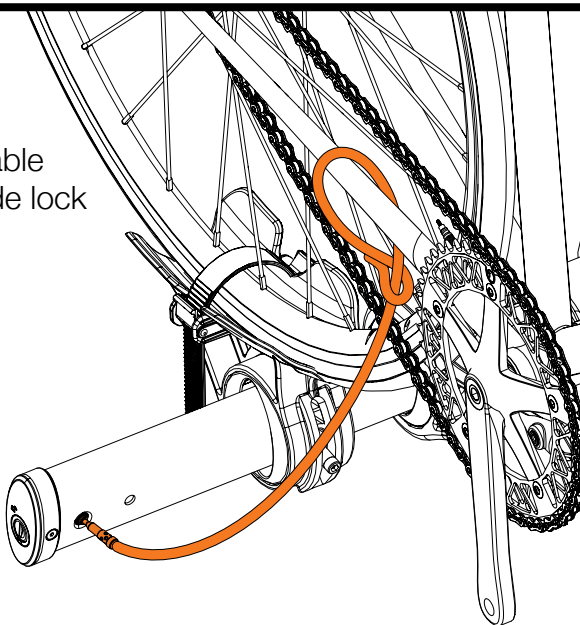
Push **Safety Latch** upward then push **Foot Lever** down to fold Transfer up or down.



**Keep hands clear  
from pivot area!**

## Locks

Thread **Lock Cable** through bicycle, back through Lock Cable Loop, and insert cable tip inside lock port on rack arm.



# Küat Rack Warnings

## ONE BIKE

TRANSFER™ v2

Number Of Bikes

1

Weight Per Bike

60 lb

27.2kg

RV Use

See RV  
Compatibility  
Warning

Max Wheelbase

50 in

1270 mm

Max Tire Width

5 in

127 mm

### WARNINGS

- Follow instructions for proper assembly, installation and use.
- Check tightness of all bolts and screws periodically.
- Make sure rack and vehicle receiver are in working condition before each use.
- Only use Küat hitch extenders with this product.
- Place front tire ratchet arm as close to front fork as possible.
- Do not use front tire bicycle fenders with this product.
- Do not exceed the bicycle or weight limits intended for this rack.
- Do not use rack off road. (rough, washed out, boulder-and-rut-strewn backroads)  
-Smooth gravel roads are not considered off-road.
- Do not use tarps, rain covers or wind covers with this product.
- Do not take through automatic car wash.
- Drive responsibly.

If you have questions or problems, please contact Küat Racks directly by calling toll free 1(877)822-KUAT, or by email: [info@kuatracks.com](mailto:info@kuatracks.com)

### ADVERTENCIAS

- Siga las instrucciones para un montaje, instalación y uso adecuados.
- Compruebe periódicamente la estanqueidad de todos los pernos y tornillos.
- Asegúrese de que el estante y el receptor del vehículo estén funcionando antes de cada uso.
- Utilice únicamente extensores de enganche Küat con este producto.
- Coloque el brazo de trinquete del neumático delantero lo más cerca posible de la horquilla delantera.
- No utilice guardabarros delanteros para bicicletas con este producto.
- No exceda los límites de bicicleta o peso destinados a esta parrilla.
- No utilice el bastidor Off-Road \*. (\* Caminos en bruto, deslavados, llenos de rocas y surcos)  
-Los caminos de grava lisa no se consideran fuera de carretera.
- No use lonas, cubiertas para la lluvia o cubiertas para el viento con este producto.
- No realice el lavado automático de automóviles.
- Conduzca responsablemente.

### AVERTISSEMENTS

- Suivez les instructions pour un assemblage, une installation et une utilisation appropriés.
- Vérifiez régulièrement le serrage de tous les boulons et vis.
- Assurez-vous que le support et le récepteur du véhicule sont en état de marche avant chaque utilisation.
- Utilisez uniquement des rallonges d'attelage Küat avec ce produit.
- Placez le bras de cliquet du pneu avant le plus près possible de la fourche avant.
- N'utilisez pas d'ailes de vélo avant avec ce produit.
- Ne dépassez pas les limites de vélo ou de poids prévues pour ce support.
- N'utilisez pas le rack Off-Road \*. (\* Routes rugueuses, délavées, parsemées de rochers et d'ornières)  
-Les routes de gravier lisses ne sont pas considérées comme hors route.
- N'utilisez pas de bâches, de housses de pluie ou de vent avec ce produit.
- Ne passez pas au lave-auto automatique.
- Conduisez de manière responsable.

# NO WORRIES LIMITED WARRANTY

We stand behind our products, and our customer service reps are waiting to help you out if you have any problems with your product. Our limited warranty covers your purchase for three years. You can review our limited warranty at our website or call customer service at the number below if you have questions or need a repair, replacement, or refund

## Questions or comments?

Drop us an email or call us directly!

[kuat.com](https://www.kuat.com) | [info@kuat.com](mailto:info@kuat.com) | 877.822.5828

# Küat RV Compatibility Warning

Küat's receiver hitch-mounted bicycle racks may be used with some recreational vehicles (RVs) as described below. Many types of RVs subject the rack and bicycles on it to high forces and extreme movements. As a result, Küat does not recommend using our receiver hitch-mounted products on RVs that will likely expose the rack to unacceptable conditions.

Küat's standard warranty will cover use of any of its 2-inch receiver hitch-mounted bicycle racks on motorhomes (as defined in 49 C.F.R. 571.3) satisfying all of the following requirements:

- 1) The receiver hitch is directly attached to the motorhome chassis, not just to the bumper;
- 2) The rear-most point of the receiver hitch where the bicycle rack will be attached is no more than 64 inches from the rear axle of the motorhome; and
- 3) The vehicle is a class B type motorhome as described below.

Class B type motorhomes are commonly known as van conversions and comprise a completed van-type vehicle which has been altered to provide temporary living quarters. Class B type motorhomes have a gross vehicle weight rating of 10,000 lbs or less.

In addition, the 2-inch receiver Transfer™ v2 and the 2-inch receiver Piston™ Pro X may be used on RVs (both motorhomes and trailers) satisfying all of the following requirements:

- 1) The receiver hitch is directly attached to the RV chassis, not just to the bumper; and
- 2) The bicycle rack is in the 2-bike configuration with no add-on unit attached.

Please check the Warnings section of the User Guide for load weight limits applicable to your rack when used on an RV. Lower weight limits may apply.

Even if the conditions above are met, any RV may be operated in a way that will expose Küat's products to conditions that they are not designed to handle. The operator of the RV is responsible to operate the RV in a manner that will not overload the rack, such as by excessive speed over rough roads or speed bumps, rapid turning movements, driving the RV over changes in gradient that will bring the rack in contact with the ground, or other similar actions.

***kuat***<sup>®</sup>

1.877.822.5828

info@kuat.com

**kuat.com**