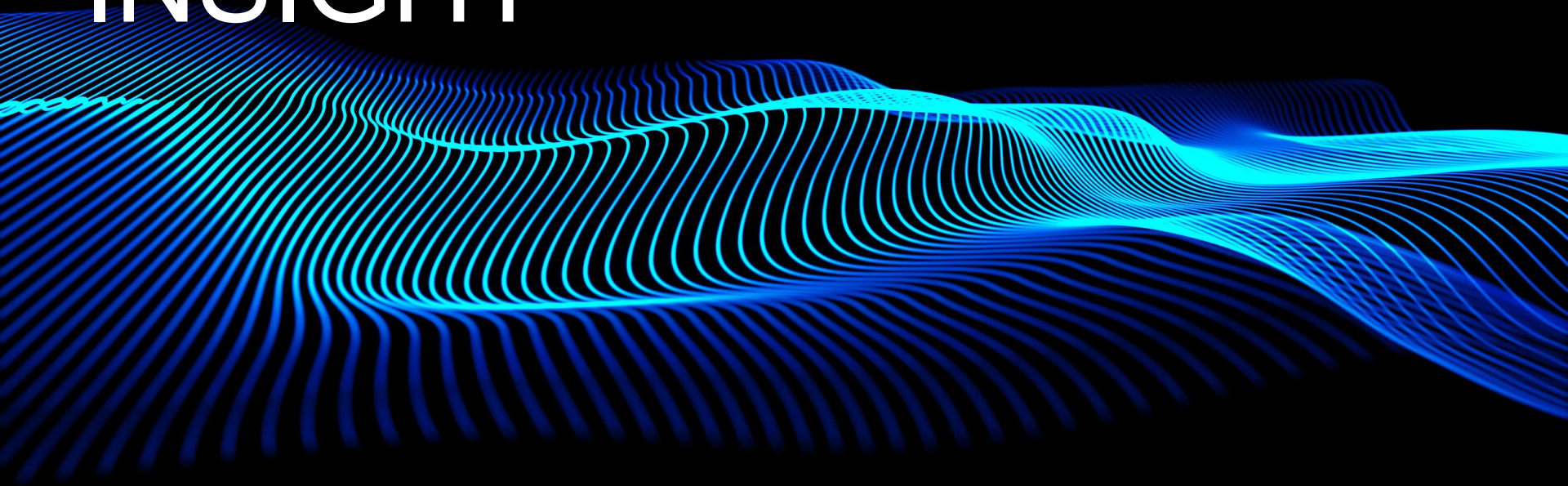
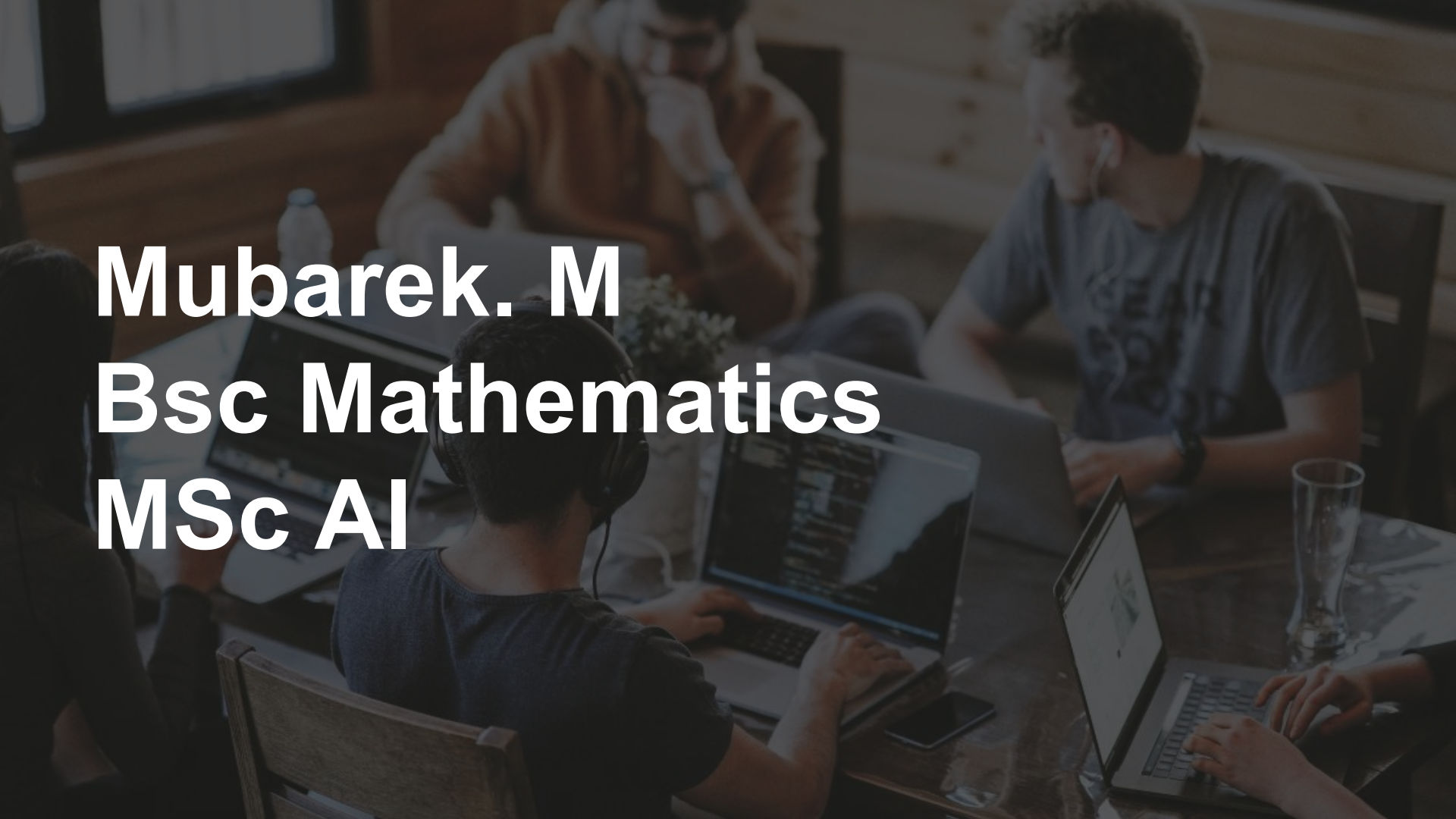


INSIGHT



A group of people are sitting around a table in a meeting room, working on laptops. The scene is dimly lit, with the primary light source being the screens of the laptops. The people are focused on their work, and the atmosphere appears to be one of collaborative effort. The text is overlaid on the left side of the image in a large, white, sans-serif font.

Mubarek. M
Bsc Mathematics
MSc AI

Problem

A large, dimly lit conference hall with a high, vaulted ceiling. The room is filled with people seated at long tables, facing a stage area. The stage features several large presentation screens displaying content. The overall atmosphere is professional and focused.

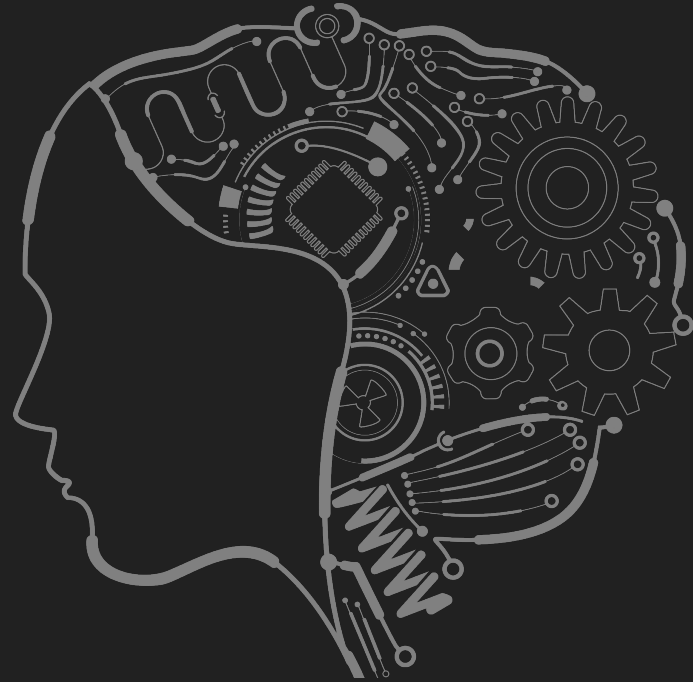
We don't know

-ourselves, even with deep introspection

-how our decisions might turn out to be (we can guess)

Solution: INSIGHT

- A platform you tell it about yourself
- ‘understands’ you
- Tells you a story of yourself from another dimension



**It product tells you
stories of different
versions of yourself
that way you**

Solution



-Use LLM classifying and generating capability to recreate your story in an 'alternate' reality

-simulating effect

Usage?

- Anyone who want to simulate decisions
- Learn about how the world sees you
 - Scenarios you would fail at
 - Scenarios you would succeed in



Tools used

- **Personality mapping : Enneagram**
- **Technology : Django + HTML/CSS**

Improvement



- Detailed information
- More personality mappers
- Mode of delivery (here story)
- Fine tuned model

A

Thanks!

