



# SPAM TRACKER

To detect and spread awareness  
about the phishing attacks to the  
society



*Created by  
Fresh Spar Technologies*





# Table of Content

---

- Problem title
- Creative Team and Mentor details
- Problem statement
- Abstract
- Motivation
- Scope and Objectives
- Innovative Solution approach
- Conclusion



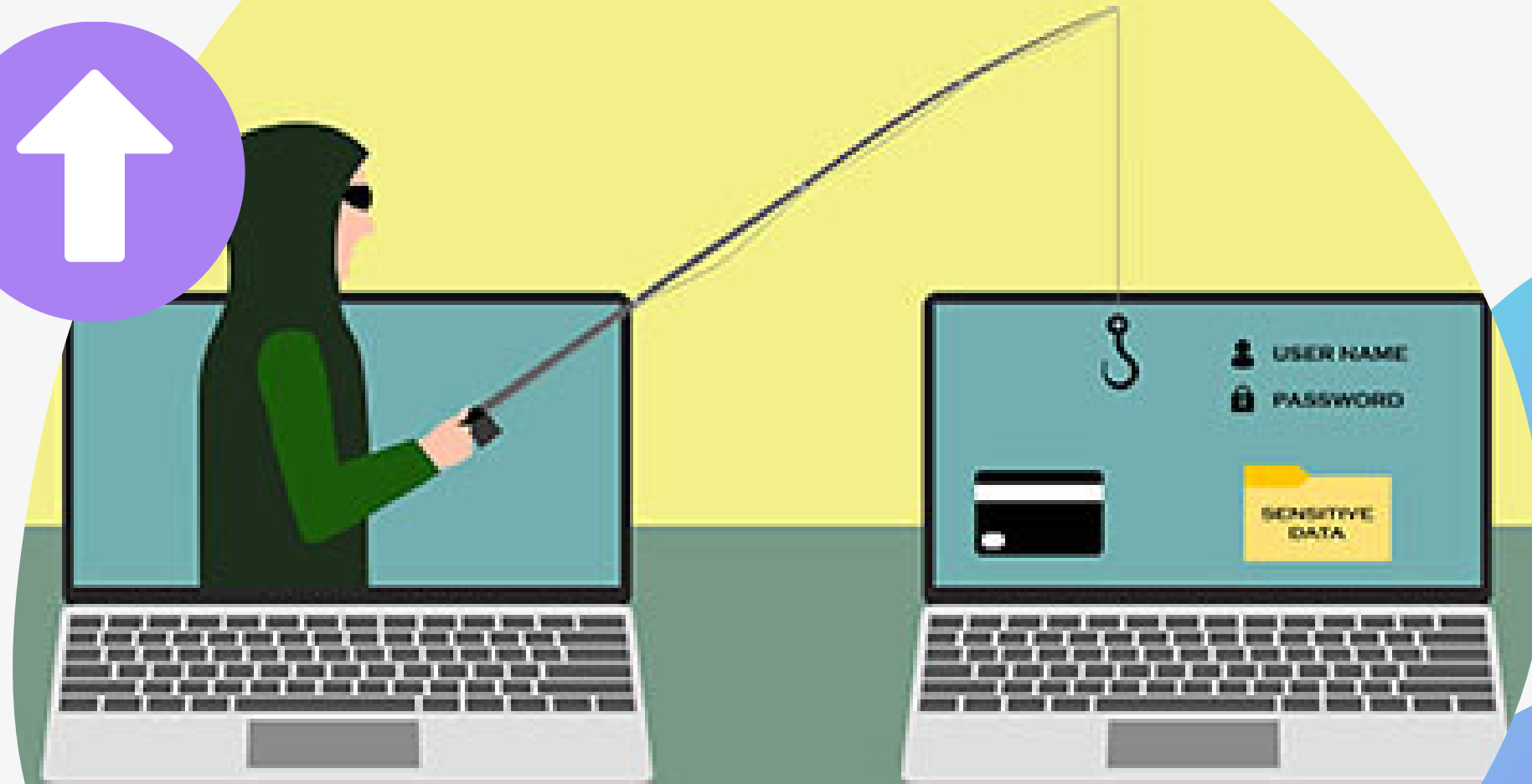


# Problem Statement



Creating a system for detecting and preventing phishing attacks

Develop a system which is capable of detecting and preventing phishing attacks . The solution should be able to detect user which may result in phishing of user information, intimating them and preventing such actions .



# Our Team



**Manojkumar C**



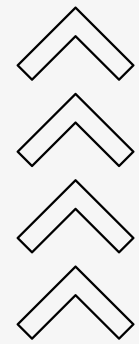
**Sandhya Barathi K**



**Sri Subiksha T**



**Krishna K**



## Mentor

**Dr. Ignisha Rajathi G**

**Department of CSBS**

**Sri Krishna College Of Engineering and Technology**



# Statistical Report :

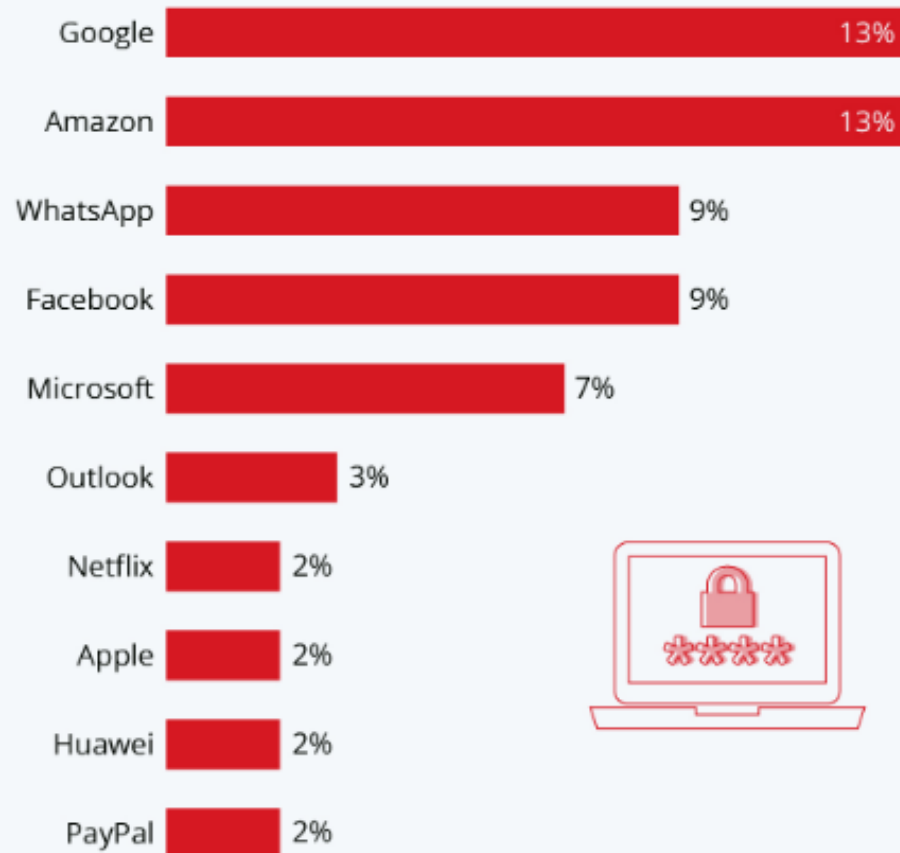


The phishing attacks goes on increasing from year to year and it mostly occur on platform like popular applications

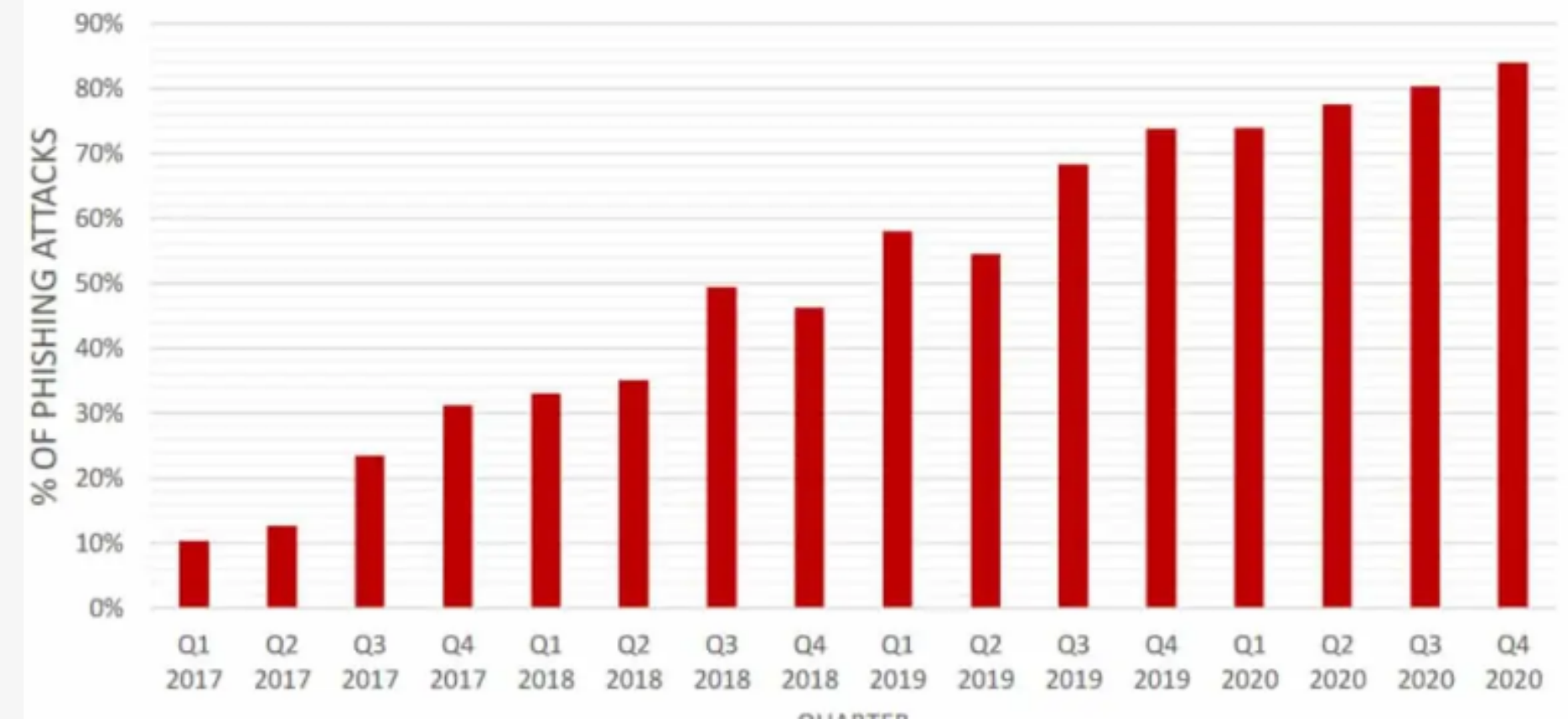
Chart 2020

## The Most Impersonated Brands in Phishing Scams

% of brand phishing attempts imitating the following brands in Q2 2020

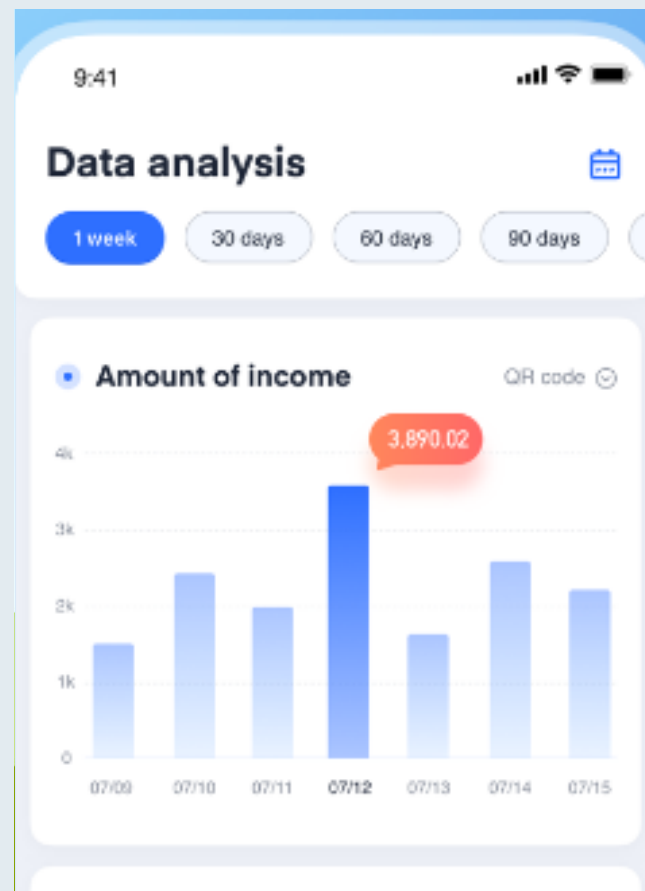


### % of Phishing Attacks Hosted on HTTPS



*Presentations are communication tools that can be used as demonstrations, lectures, speeches, reports, and more.*

# Key Metrics:



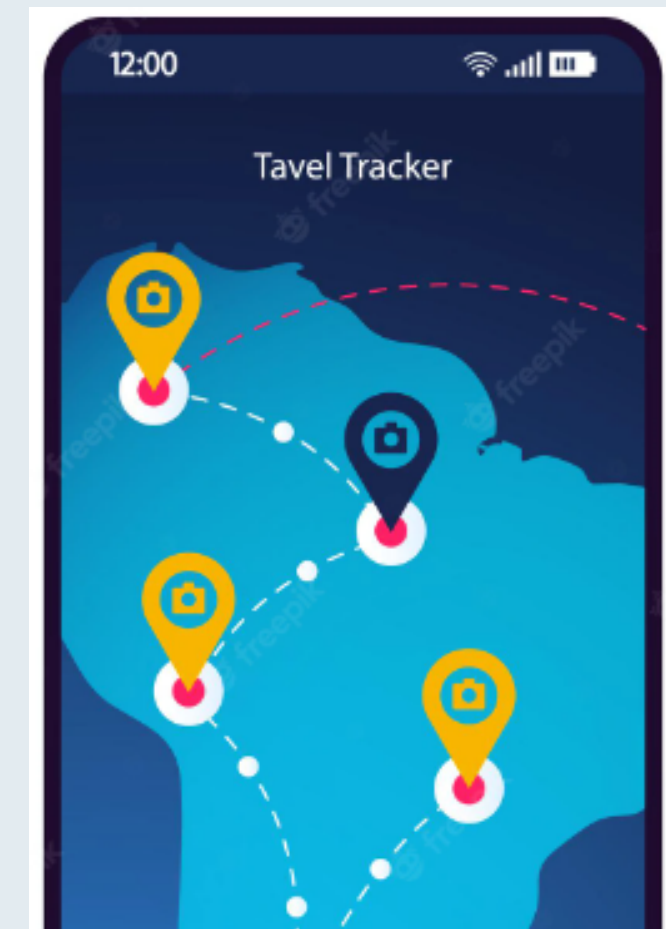
## Analysis TAB

The analysis tab of our app helps to analyze the risk of the spam attacks to the user and makes you aware of about them.



## Blog Page

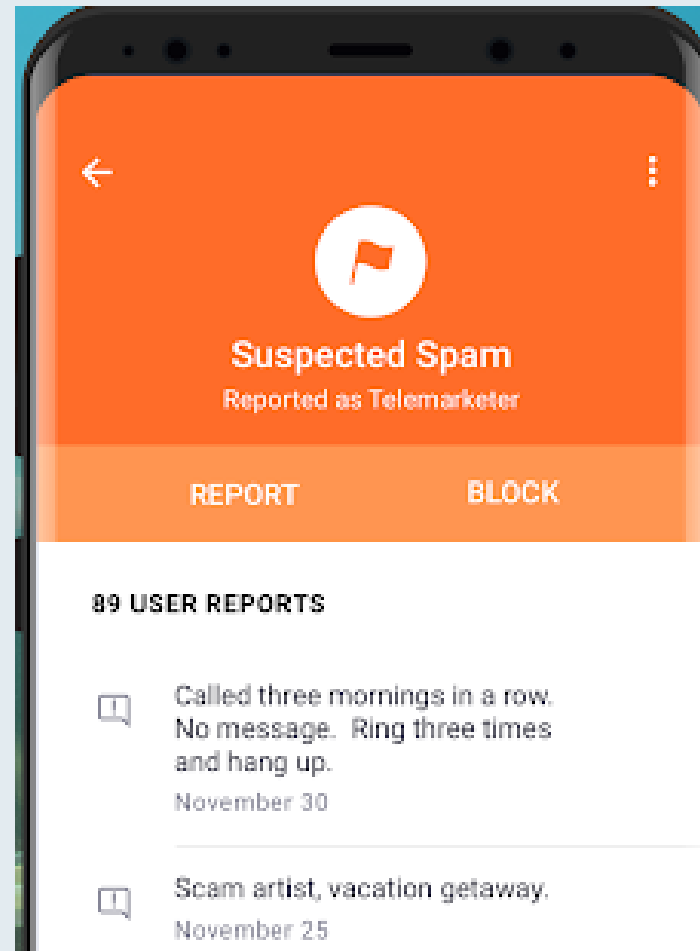
Awariness prevents the starts from scam .This may helps to create awareness about the phishing attacks by using various features such as blogs, Videos and Podcast .



## Tracker Tab :

**The location of the attacker can be tracked by using some machine learning techniques and algorithms . This helps to find the victim and report automatically ot the cyber officials**

# Key Metrics:



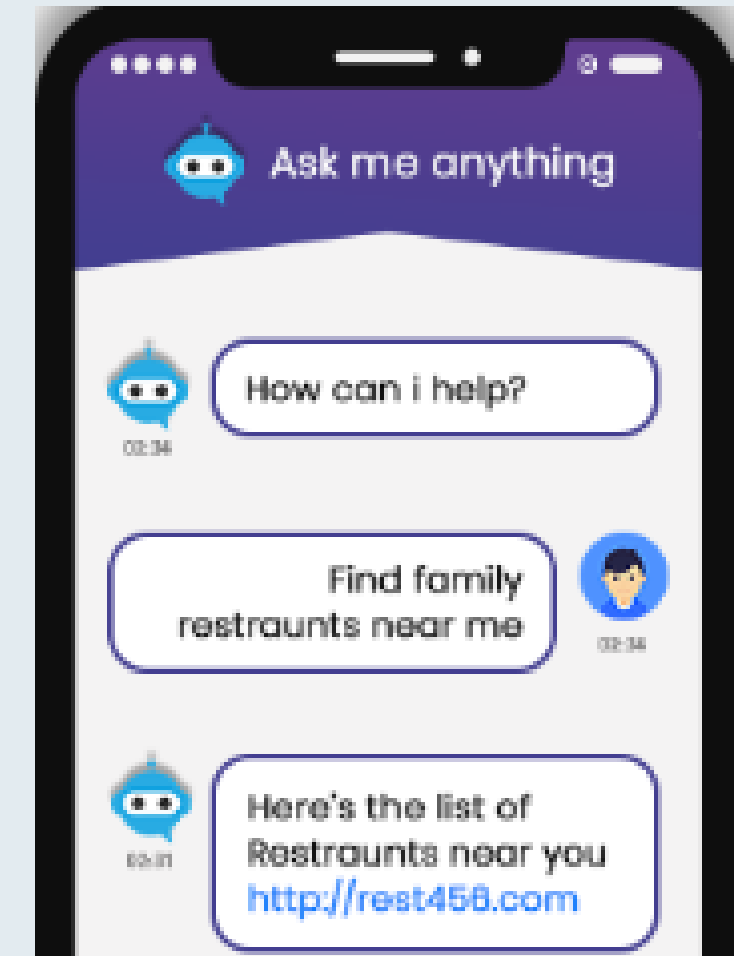
## Spam Detector :

Our app detects the phishing attacks such as E-mail, SMS, URL spam website detection etc ....



## Experts Meeting :

The users can directly interact with security officials and then report their phishing attacks to the security expert



## AI chat Bot:

Using Ai chat the user can immediately report thier issues to the security experts .It helps give immediate analysing of the datas

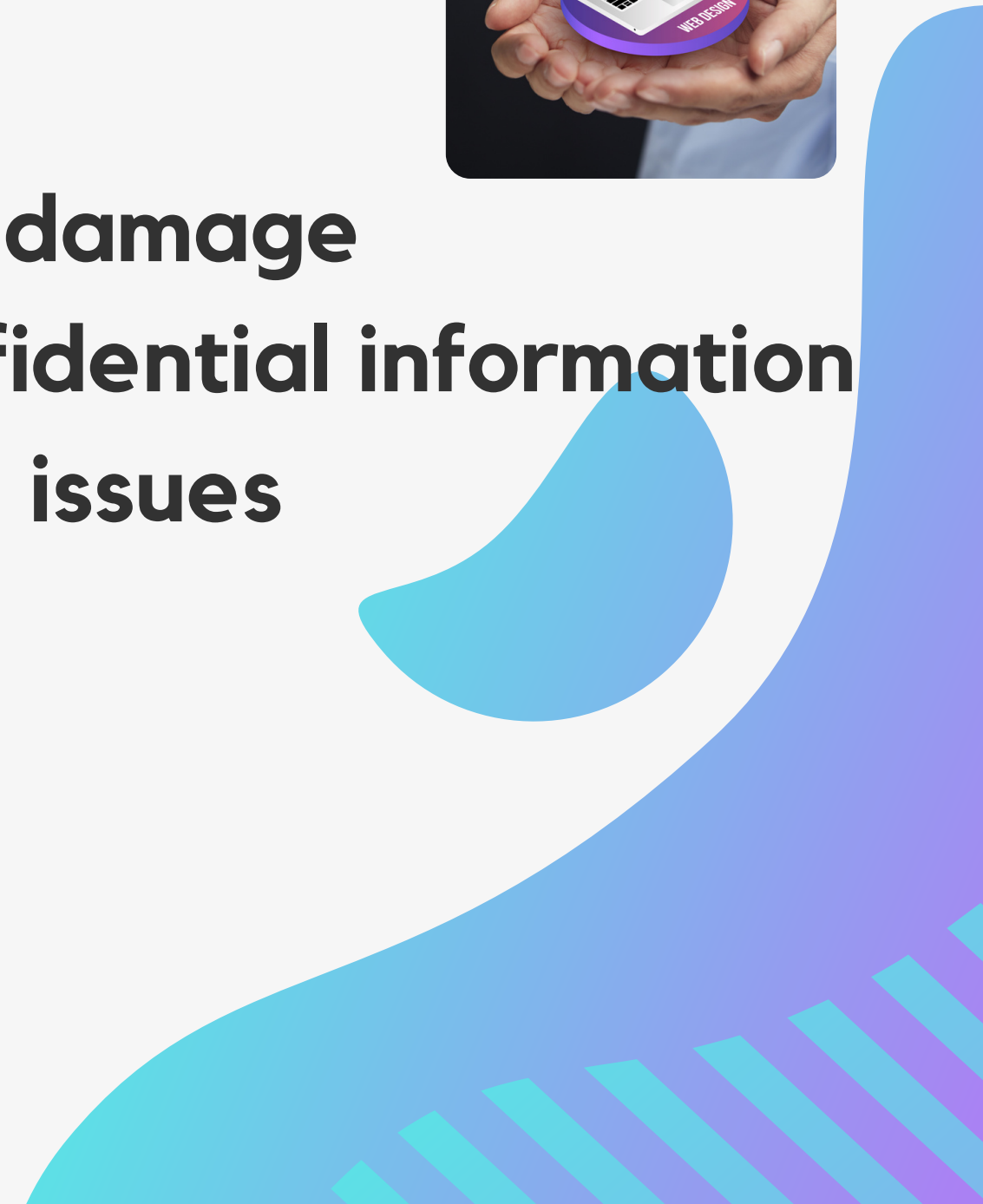


# Risk Factors



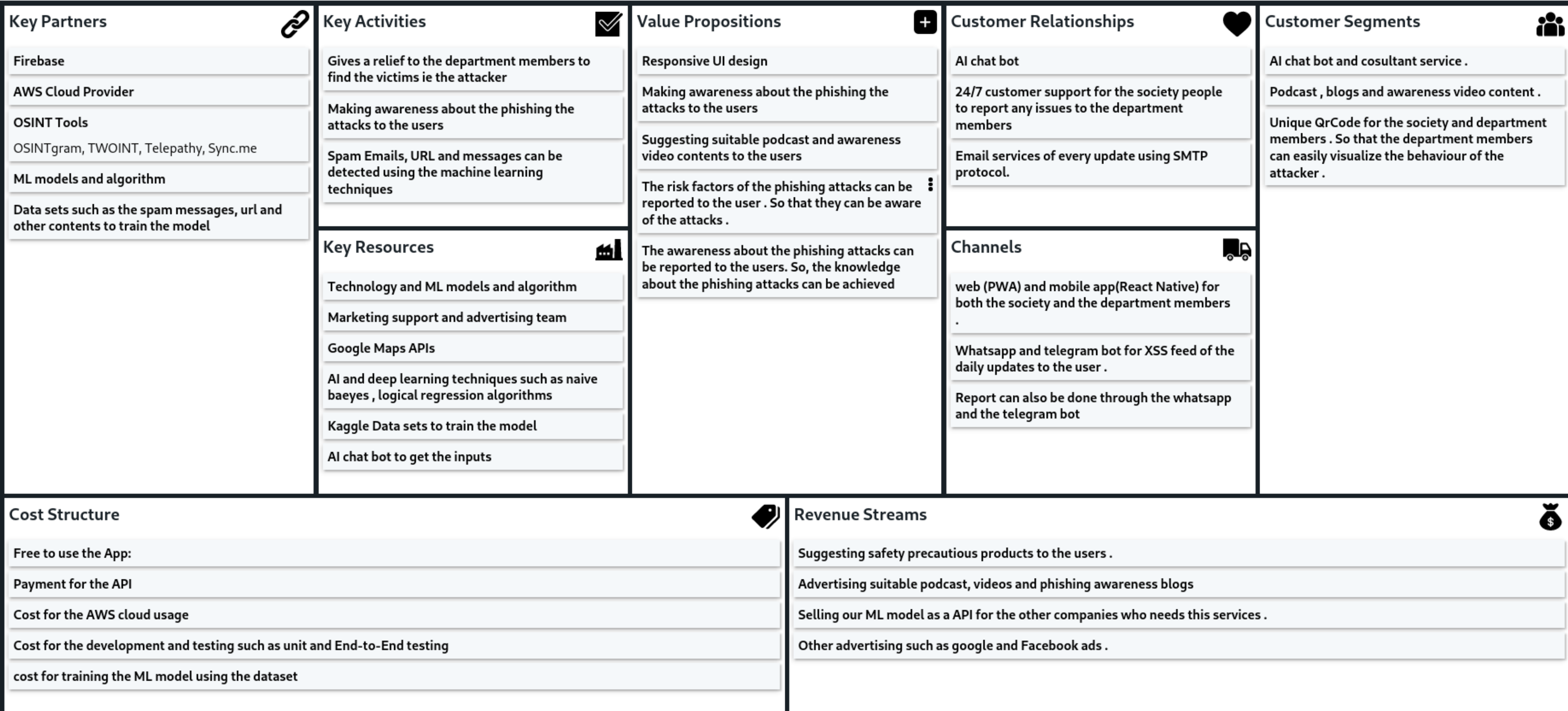
- **Identity theft**
- **Financial loss**
- **Malware infection**

- **Reputation damage**
- **Loss of confidential information**
- **Compliance issues**

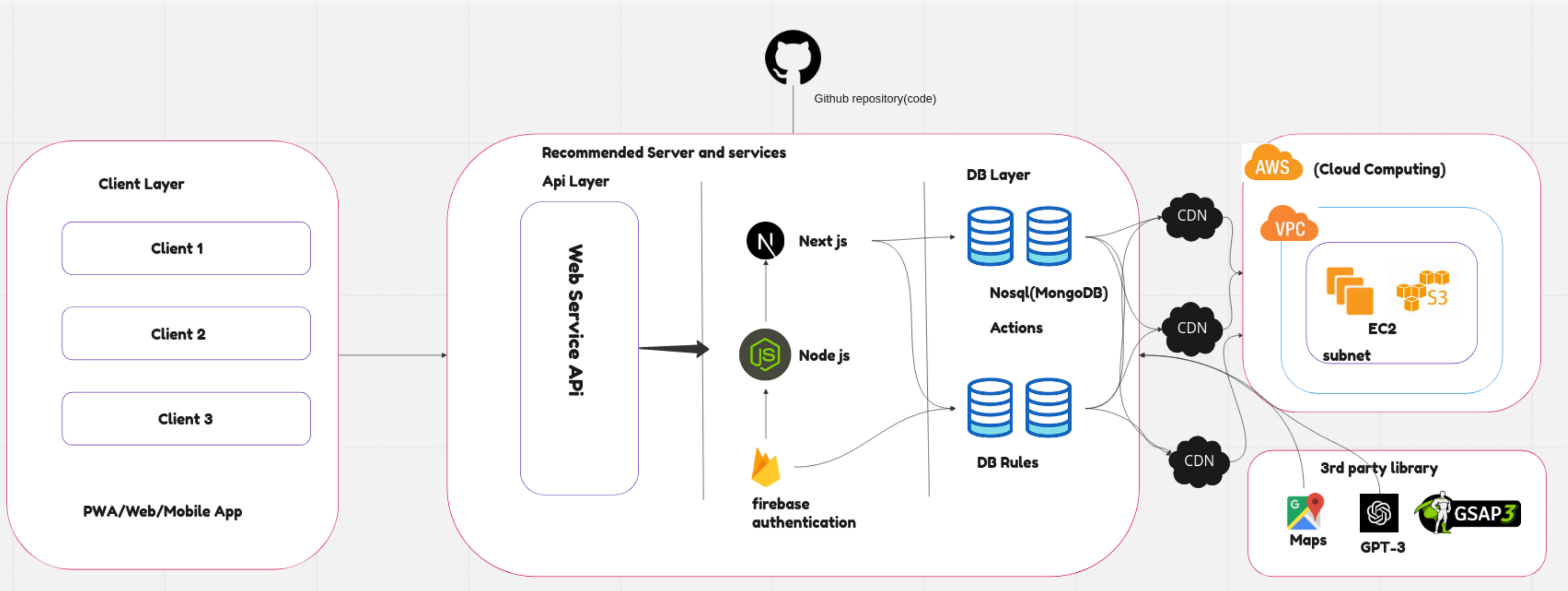




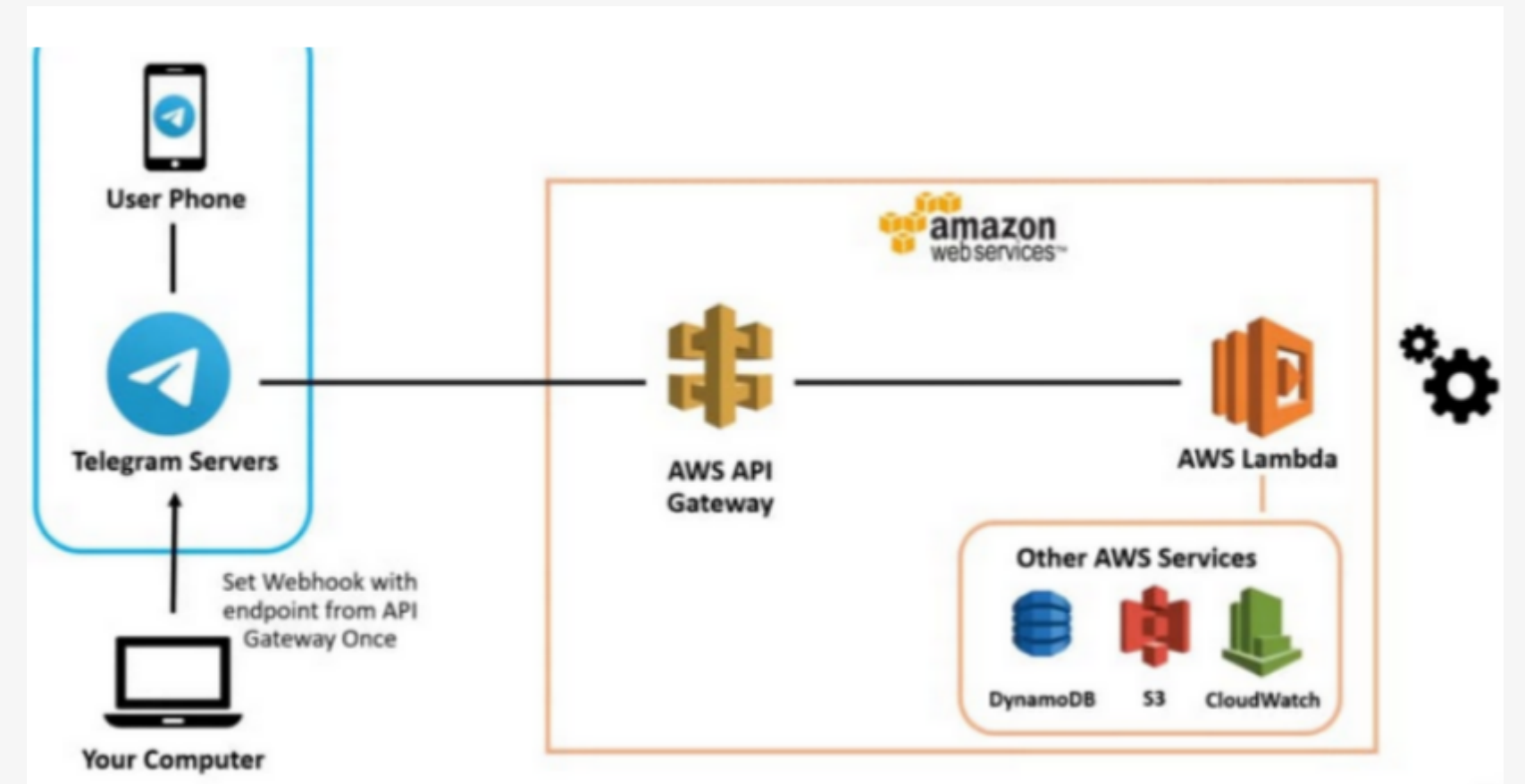
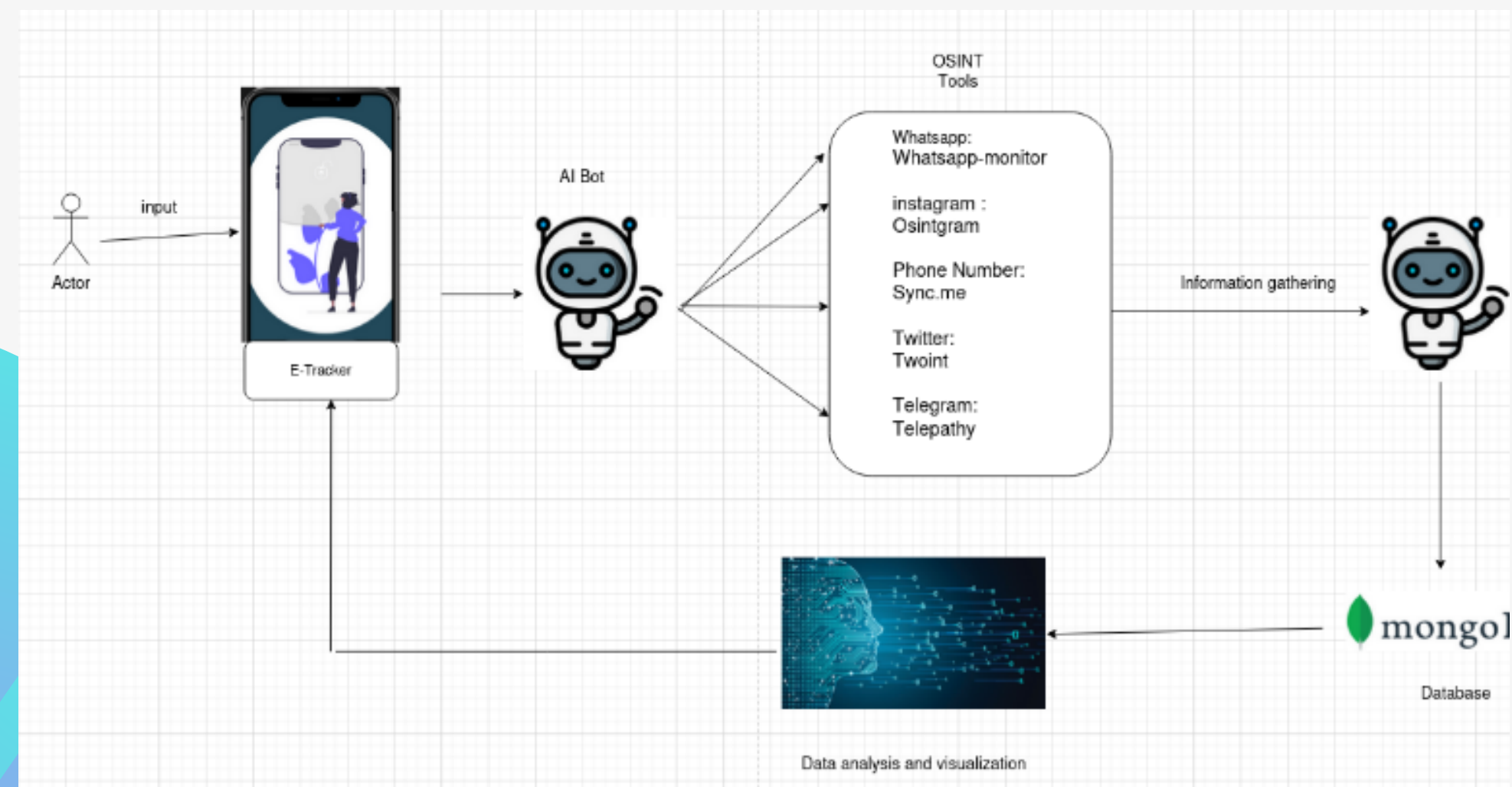
# Business Model:



# App Architecture:



# Bot Architecture:



# TECH STACK USED FOR APP

## MACHINE LEARNING ALGOS AND APIS

Numpy, Pandas, Pytorch, Scikit-Learn ,  
Matplotlib, Logical Regression Model,  
NLP - Transformation Model .

## FRONT-END

REACT-JS, GSAP, ChartJs,

## BACKEND

NODE JS , Express Js  
NEXT-JS FRAMEWORK

## DATABASE

MongoDB, Firebase for  
Authentication

## BACKEND SERVER

AWS --> for deployment of original app

# Source Code Links:

FIGMA PROTOTYPE :

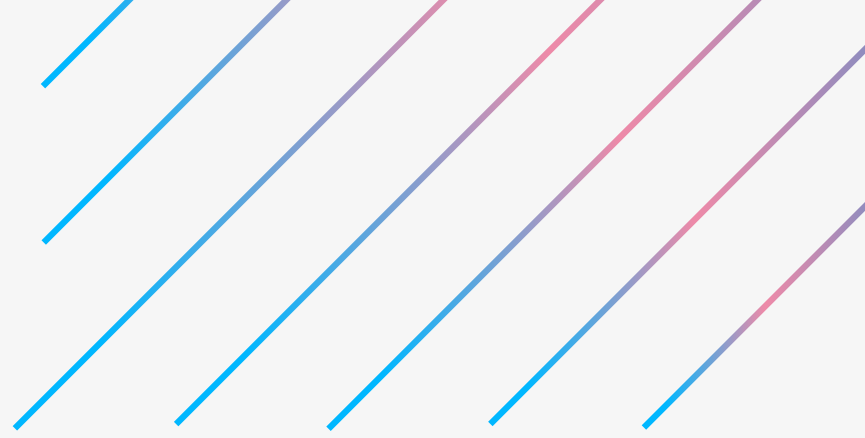
<https://www.figma.com/proto/w1ulvMBummJr1nKVHZMfXY/Untitled?node-id=1%3A2153&scaling=contain&page-id=0%3A1&starting-point-node-id=1%3A2153>

CANVA:

[https://www.canva.com/design/DAFZZhqAMO0/fxqg1Bd6AJwq6jG-Wp95UQ/view?utm\\_content=DAFZZhqAMO0&utm\\_campaign=designshare&utm\\_medium=link2&utm\\_source=sharebutton](https://www.canva.com/design/DAFZZhqAMO0/fxqg1Bd6AJwq6jG-Wp95UQ/view?utm_content=DAFZZhqAMO0&utm_campaign=designshare&utm_medium=link2&utm_source=sharebutton)

YOUTUBE :

GITHUB :



# Thank You



Cybercrime is a constant threat, but awareness can be our strongest defense against phishing attacks



by  
*Fresh Spar Technologies*

