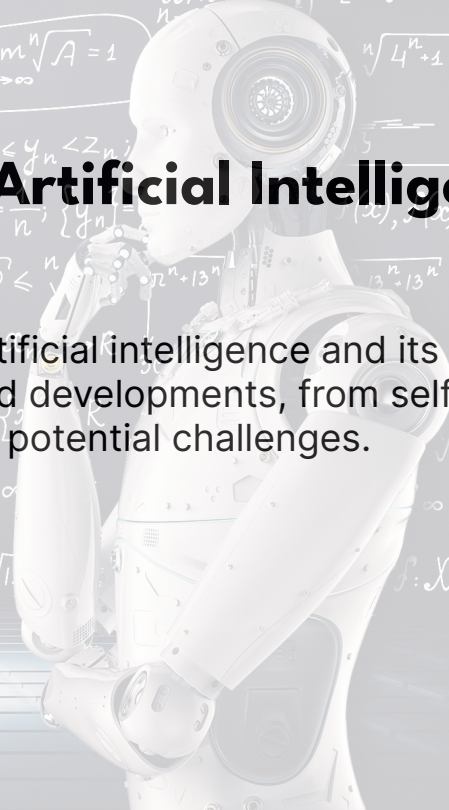


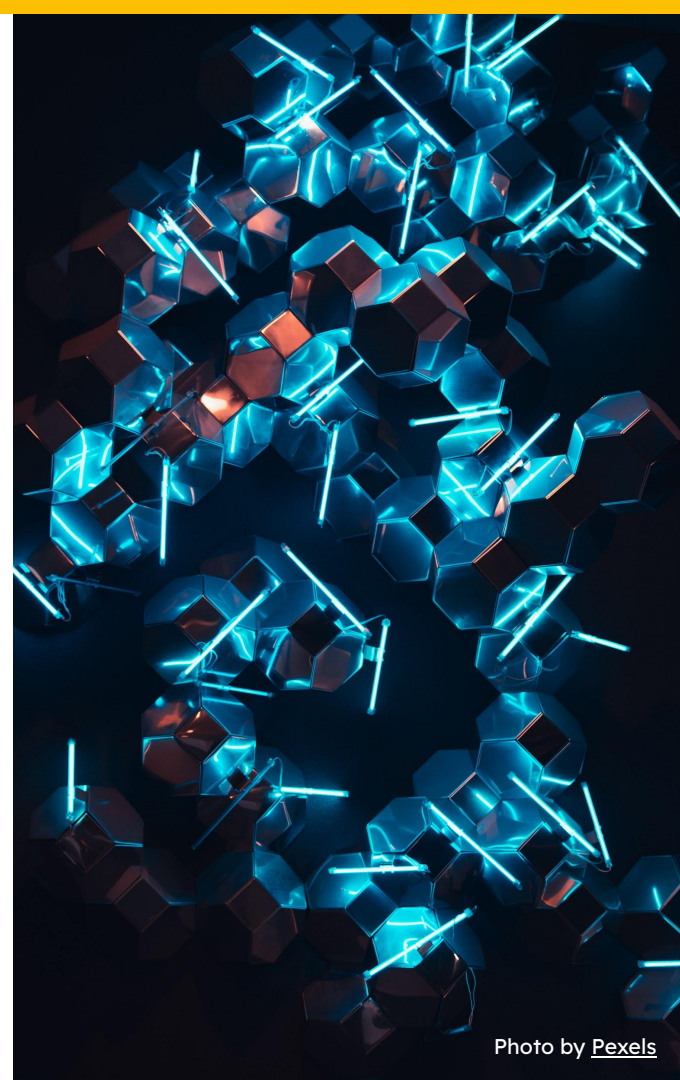
Exploring the Evolving World of Artificial Intelligence

Join us as we explore the rapidly advancing world of artificial intelligence and its impact on society. This presentation covers the latest AI research and developments, from self-driving cars to intelligent virtual assistants, as well as potential challenges.



Overview

- Written by ChatGPT, GPT 3.5, Open AI Davinci, and human assistance.
- Read by Text-to-Speech: Lifelike Speech Synthesis - Google Cloud and Natural Reader Text to Speech.
- Published in Anchor.fm and other platforms.



Description

- Exploring the rapidly advancing world of artificial intelligence.
- Discussing the latest AI research and developments.
- Potential and challenges of this rapidly evolving technology.



Episode Details

- Season 1 started on December 15, 2022, new episode every other day.
- Season 2 started on February 16, 2023, 5 Episode currently.
- Length: 15-24 mins.



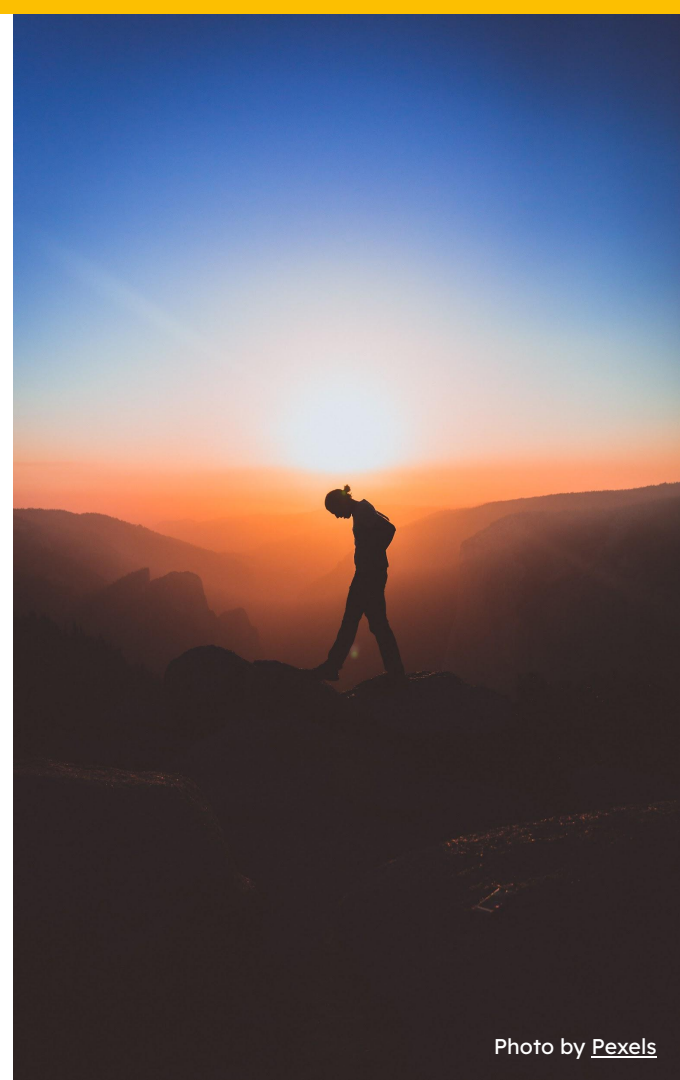
Potential Impact

- Self-driving cars, intelligent virtual assistants.
- Impact on various industries and aspects of our daily lives.



Challenges

- Potential challenges of this rapidly evolving technology.



Conclusion

- Stay up-to-date on the future of AI and its impact on society.

Thank you. Please feel free to ask any questions. 😊