

■ AI ARK-ITECHTS

# ConnectAI

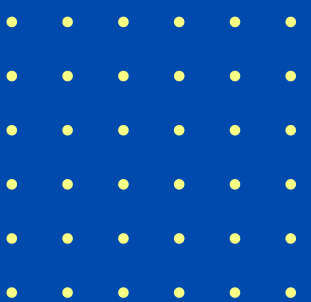
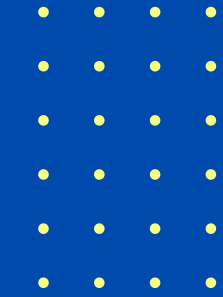
Making Artificial Connections Real

AI Companion to find your social  
match



# Problem

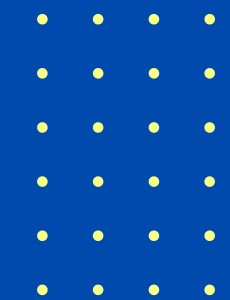
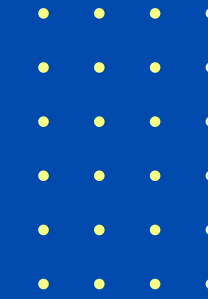
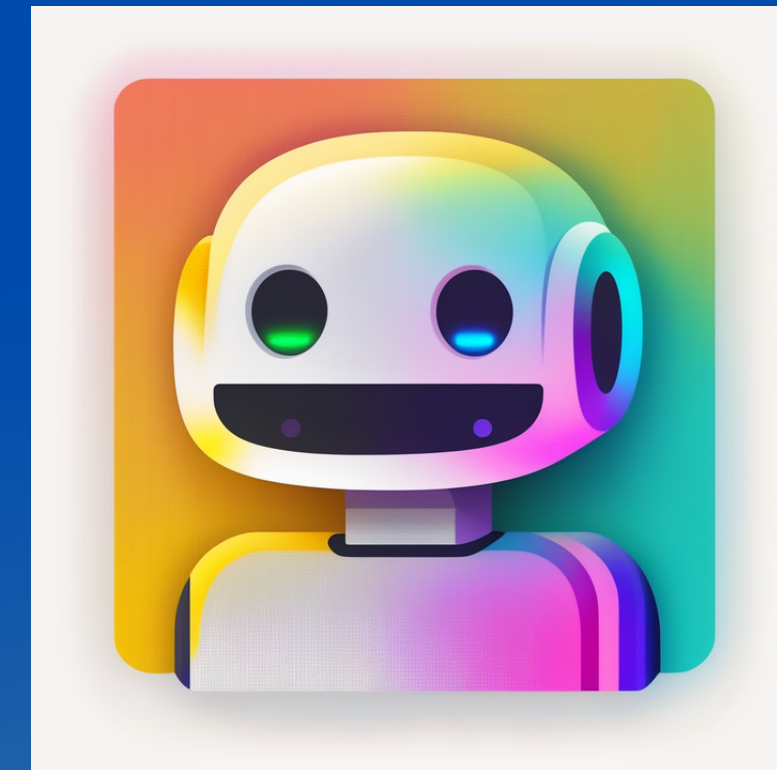
- Loneliness is a growing problem, with over 61% of adults in the US reporting feeling lonely in 2020.
- The COVID-19 pandemic has further exacerbated this issue leading to increased isolation.
- People often find it hard to make real connections with others who share their interests.
- Rapid growth of AI Companion bots such as Replika.ai but it can not replace the value of human connections and relationships.



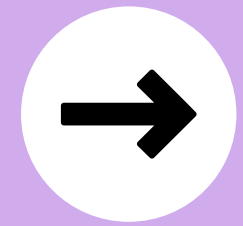
# Solution

Our chatbot companion uses AI technology to learn about the user's interests and preferences, and provide personalized conversation.

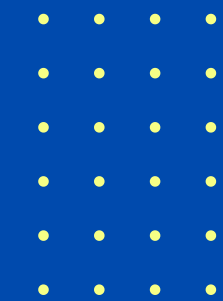
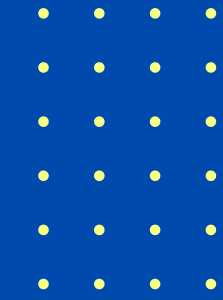
The chatbot also matches the user with other users who share similar interests, and provides the option to connect with a real human friend.



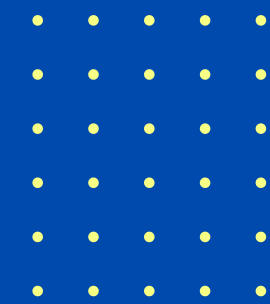
# Features



- Personalized conversation
- Interest matching
- Option to connect with a real human friend



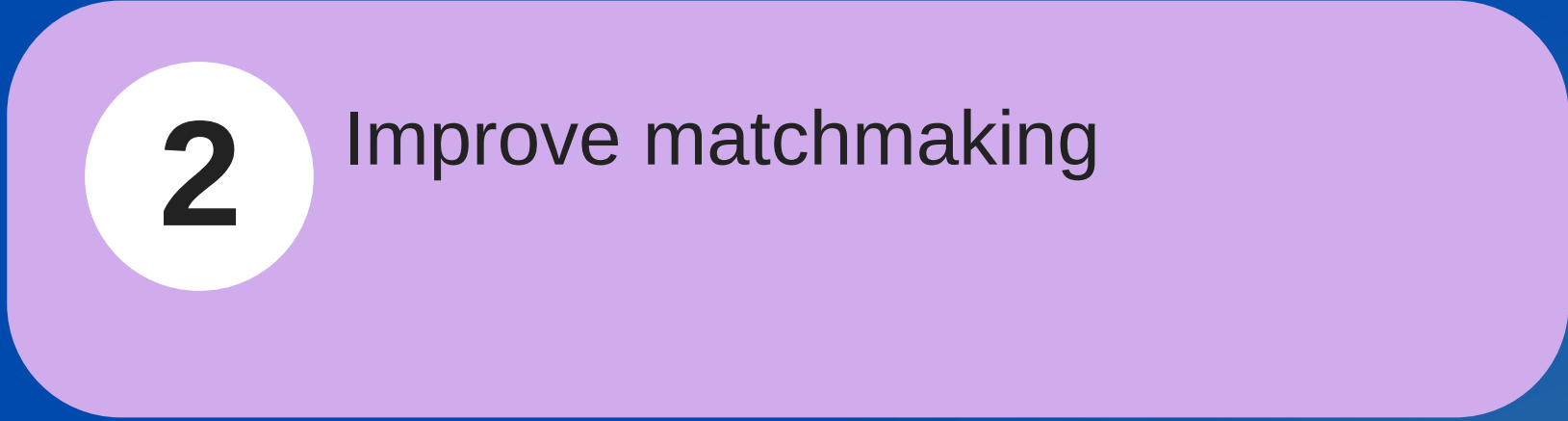
**Demo**



# Future Improvements



**1** User registration and management



**2** Improve matchmaking



**3** Privacy issues

# Team



**Suman Kumar Polepaka**

Founder, Product & Tech Leader



**Daniel Munioz**

ML Engineer, Backend



**Mphatso Karen Chiomba**

Frontend

**Thank You!!**

