
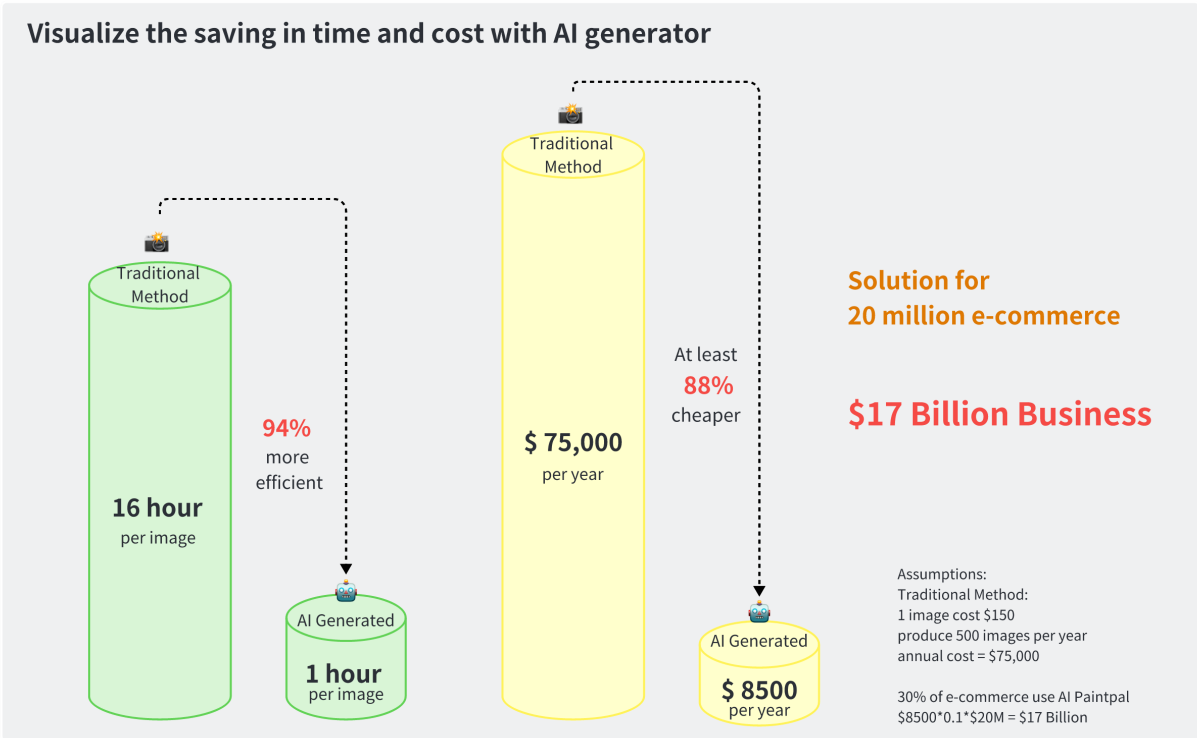


# Hackathon Demo

 We use AI to facilitate industrial design and modeling images.  
Our first product is Paintpal

## Business Values

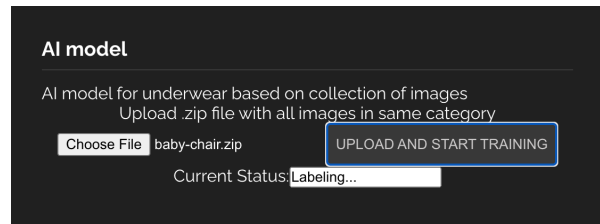
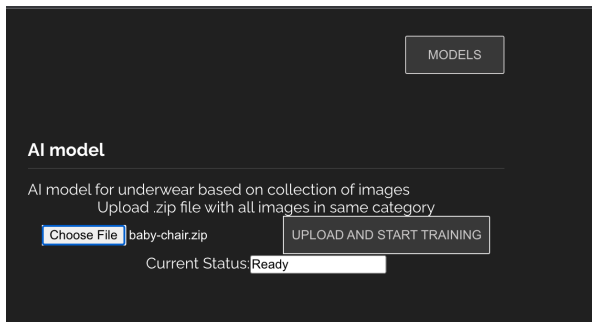
- Current market volumn for industrail design and modeling is high.
- The potential for cost reduction and efficiency improvement is huge.
- There are 20 million small business companies who can benefit from this.

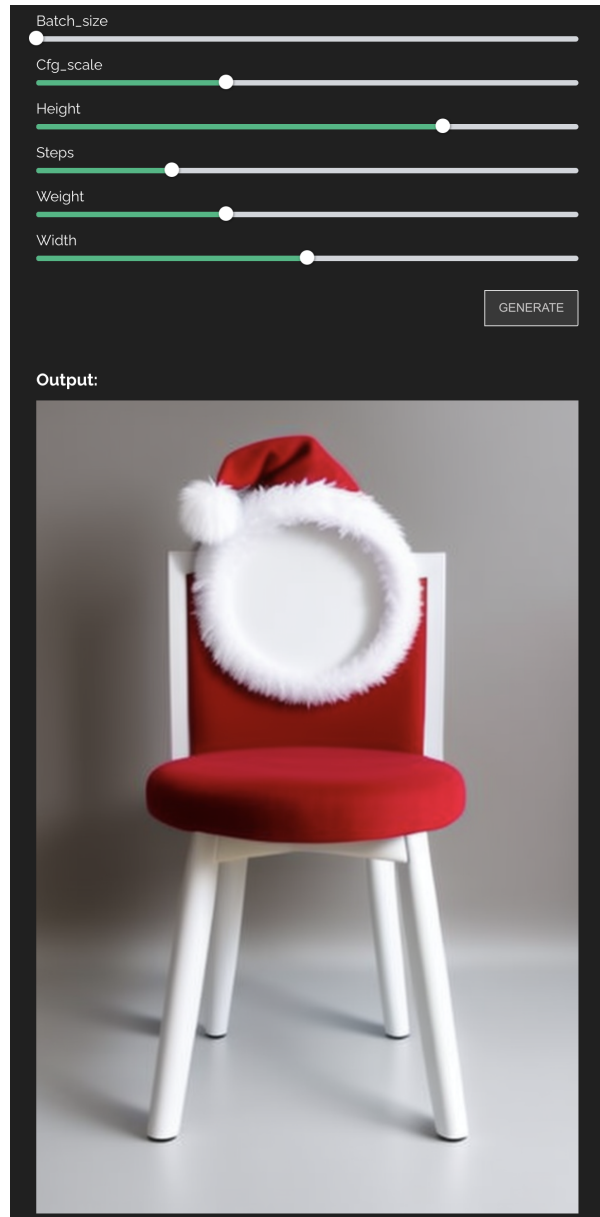


## What we do

You can

- generate designs based on descriptions and existing collections.
- try new designs in real-world pictures.
- Upload batch images to train your own model to generate image in the same category





For example, you can use the model to

- generate streamlined, leather material body e-cigarette design based on the <200 images collection>
- try <helmet-design> on 6-month kids playing on grass.

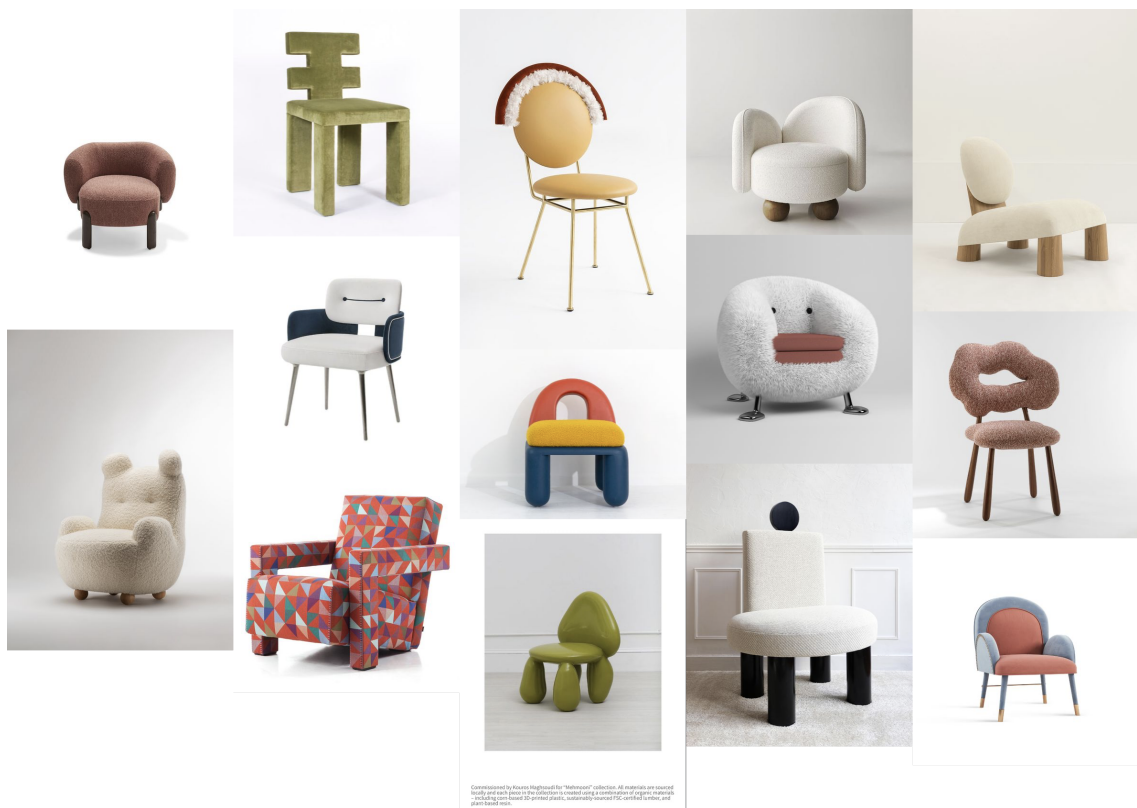


## Originality and Customer Use Cases

- Originality
  - Found during working with existing customers
- Innovation
  - Solve practical problems for small companies with state-of-art AI technologies
- Actual use cases in collaboration with real users

▼ Children's chair

Training set



Parameters\_1

children's chair, no humans, white background, simple background, still life, chair, stool, table, santa hat, <lora:ertongyi:0.8>

### Paintpal

Type: Stable diffusion  
Model: AI children's chair based on collection of in

Prompt:  
children's chair, no humans, white background, simple background, still life, chair, stool, table, santa hat, <lora:ertongyi:0.8>

130 Characters

Negative\_prompt:  
Embossed, ((bad construction)), words, text, ((distorted structure)), deformedeyes, ((disfigured)), ((badart)), ((deformed)), ((extra limbs)), ((duplicate)), ((morbid)), ((mutilated)), outof frame, extra fingers, mutated hands, poorly drawn eyes, ((poorly drawnhands)), ((poorlydrawn face))

621 Characters

Sampler\_index:  
DPM++ SDE Karras

16 Characters

Width: [Slider]

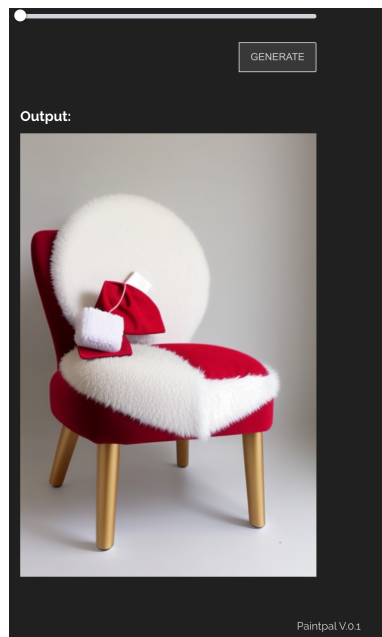
Height: [Slider]

Steps: [Slider]

Cfg\_scale: [Slider]

Batch\_size: [Slider]

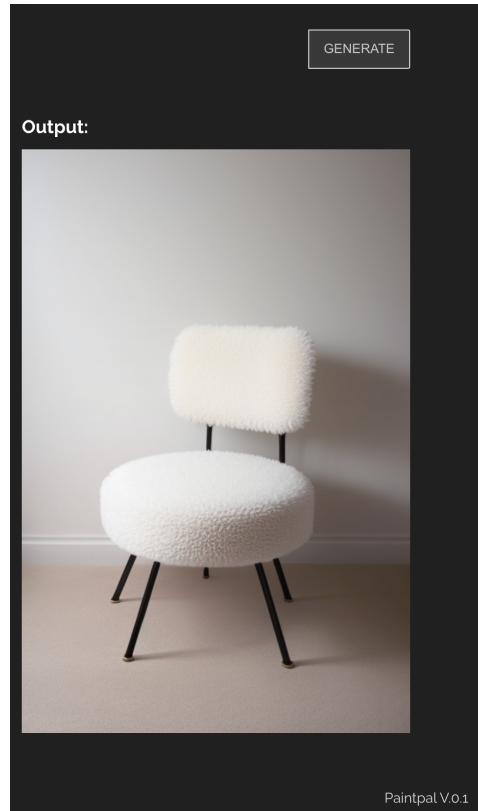
## Results\_1



## Parameters\_2

children's chair, no humans, white background, simple background, still life, chair, stool, table, Shearling, <lora:ertongyi:0.8>

## Results\_2



### ▼ AI modeling for helmet

Training set



screenshot-2023  
0324-170432.png



screenshot-2023  
0324-170445.png

Parameters\_1

```
a cute boy , helmet , sitting on the  
sofa ,smiling <lora:helt3.27-0000  
12:1>
```

# Paintpal

Type: Stable diffusion  
Model: AI children's helmet

Prompt

```
a cute boy , helmet , sitting on the sofa ,smiling <lora:helt3.27-000012:1>
```

78 Characters

Negative\_prompt

```
Embossed, ((bad construction)), words, text, ((distorted structure)), deformedeyes, ((disfigured)), ((badart)), ((deformed)), ((extra limbs)), (((duplicate))), ((morbid)), ((mutilated)), outof frame, extra
```

621 Characters

Sampler\_index

```
DPM++ SDE Karras
```

16 Characters

Width

Height

Steps

Cfg\_scale

Batch\_size

## Results\_1





## Parameters\_2

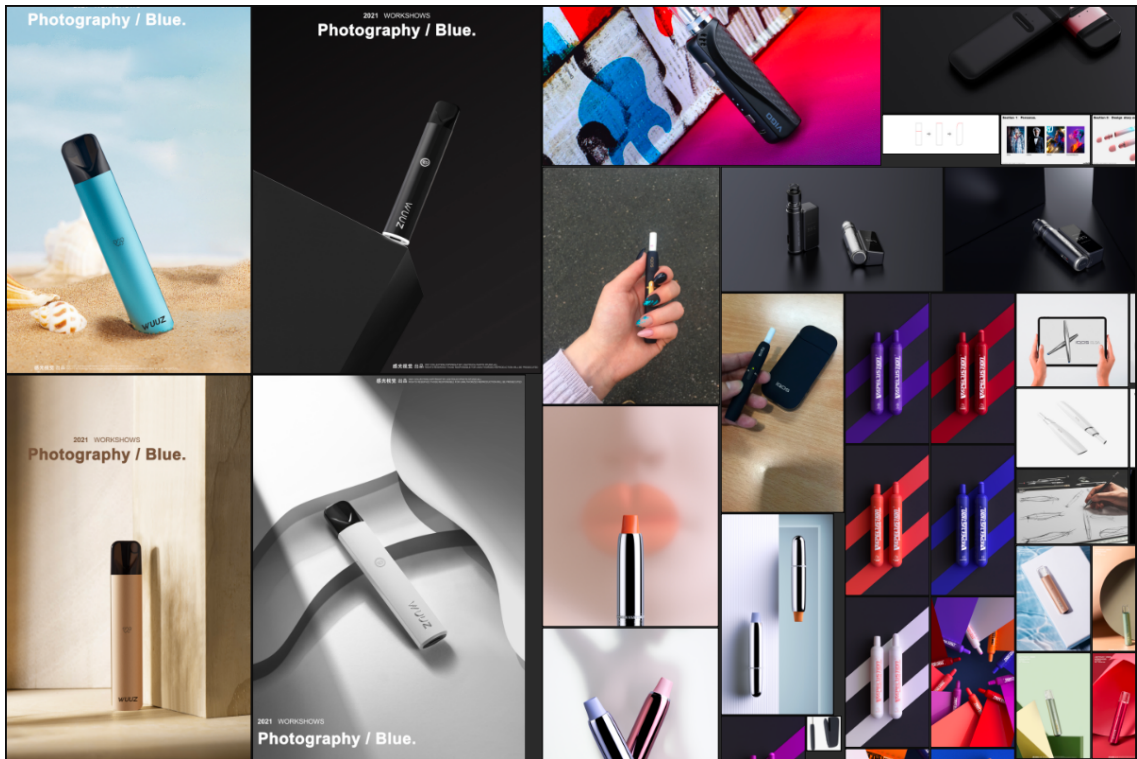
```
a cute boy , helmet , on grass ,smiling <lora:helt3.27-000012:1>
```

## Results\_2



▼ e-cigarette industrial design

Training set



Parameters\_1

e-cigarette,sports,classic,light, poor ,simple background,

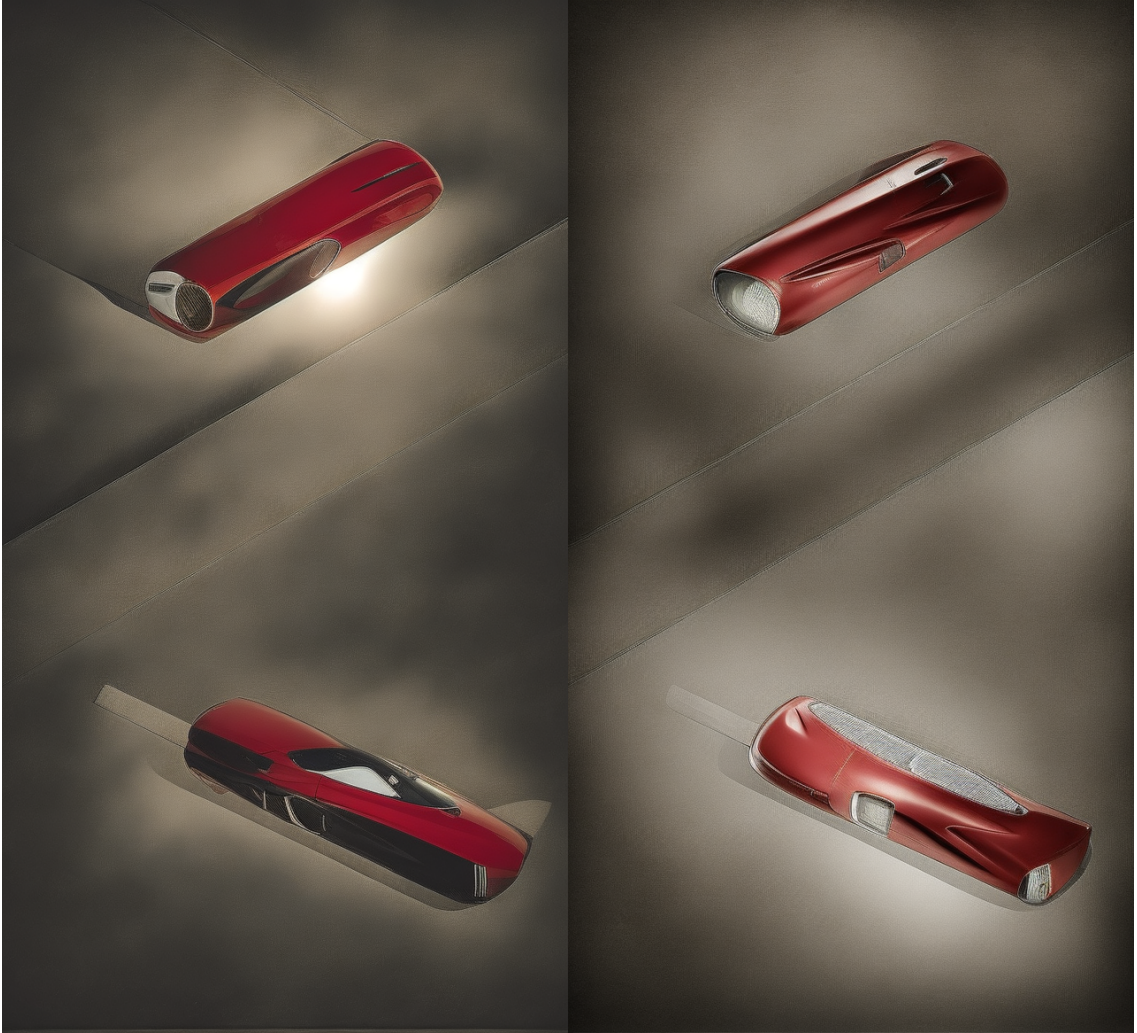
Results\_1



Parameters\_2

sports,classic,light, poor ,simple background,

Results\_2

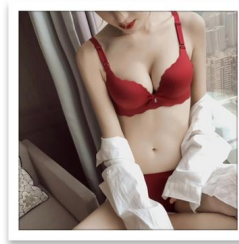


▼ AI model for dressing

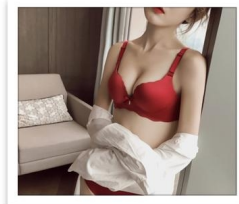
Training set



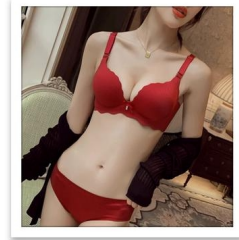
红色内衣一套 a-1.jpeg



红色内衣一套 a-2.png



红色内衣一套 a-3.png



## Parameters\_1

Type: Stable diffusion

Model: AI model

Prompt: 8k uhd,RAW photo,lgirl, (real person:1.3),(highres:1.4), (detailed:1.5),(realistic:1.7), masterwork,RAW photo,art portrait photography,real person,RAW photograph,ultra high res,photorealistic,best quality,(high detailed skin,skin details) visible pores shiny  
832 Characters

Negative\_prompt: Embossed, ((bad construction)), words, text, ((distorted structure)), deformedeyes,((disfigured)),((badart)), ((deformed)),((extra limbs)),(((duplicate))),((morbid)), ((mutilated)),outof frame,extra fingers,muted hands,poorly drawn eyes ((poorly drawnhands)) ((poorlydrawn face))  
621 Characters

Model\_name: ChilloutMix-Ni.safetensors  
26 Characters

Sampler\_index: DPM++ SDE Karras  
16 Characters

Width: [Slider]

Height: [Slider]

Steps: [Slider]

Cfg\_scale: [Slider]

Batch\_size: [Slider]

## Results\_1



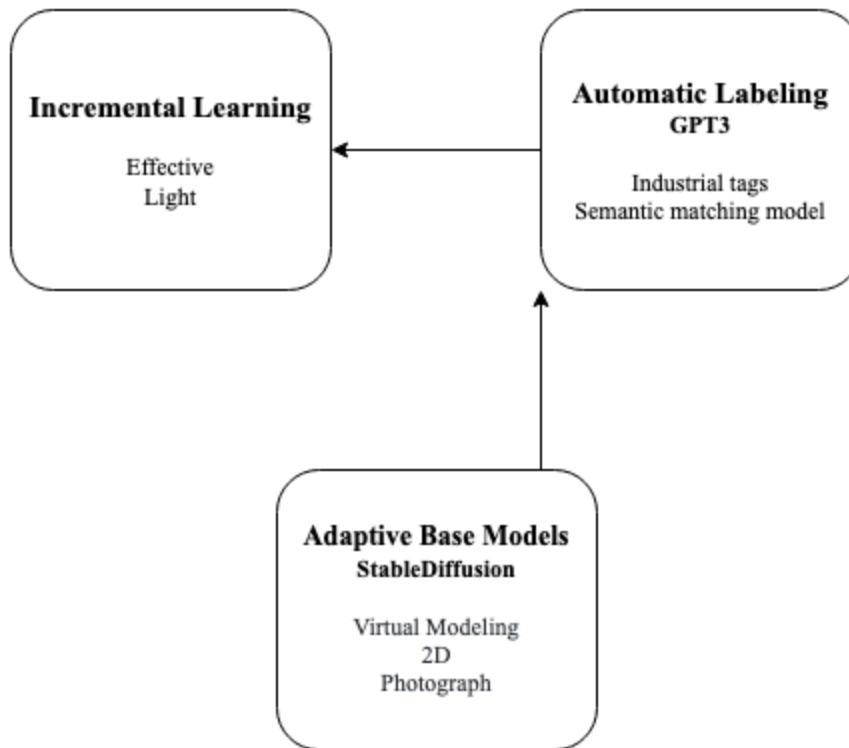
### Overall Impression

- Users can provide a collection of reference images
- Users can use simple words to *generate* and *modify* images
- The user's product can be displayed in different scenarios

## Technology

---

- System diagram



## Impact

- Tailored for industrial design. Where the output image is applicable for massive production.
- Unique labeling system and algorithm.
- Make the state-of-art technology more accessible to people with no tech background.

## Demo Link for Paintpal

Please remember this is still a very early-stage demo. We'll continue improving it 😊

<https://paintpal-lablab.mindblink.co/>

## Contact



If you're interested in our product and would like to speak with us, you can schedule a call at <https://calendly.com/mindblink/30min>

You can also send us an email to [contact.mindblink@gmail.com](mailto:contact.mindblink@gmail.com)

Thank you for your interest!