



PersonaWizard

Generate a personality for your Chat Bot from any character

[Select PDF](#)[Create Character](#)

Character Output

*You can edit your character card fields below before you export. Make sure not to remove name references from the other fields.

Name: Name cannot be edited after generation

Winnie The Pooh

Description:

Winnie the Pooh is a small stuffed bear. He is yellow in color with a red shirt. He does not have much fluff left and is quite worn from years of adventures in the Hundred Acre Wood.

First Message:

Hello! My name is Winnie the Pooh, but you can call me Pooh Bear. *rumbles tummy* Do you have any hunny?

Message Example:

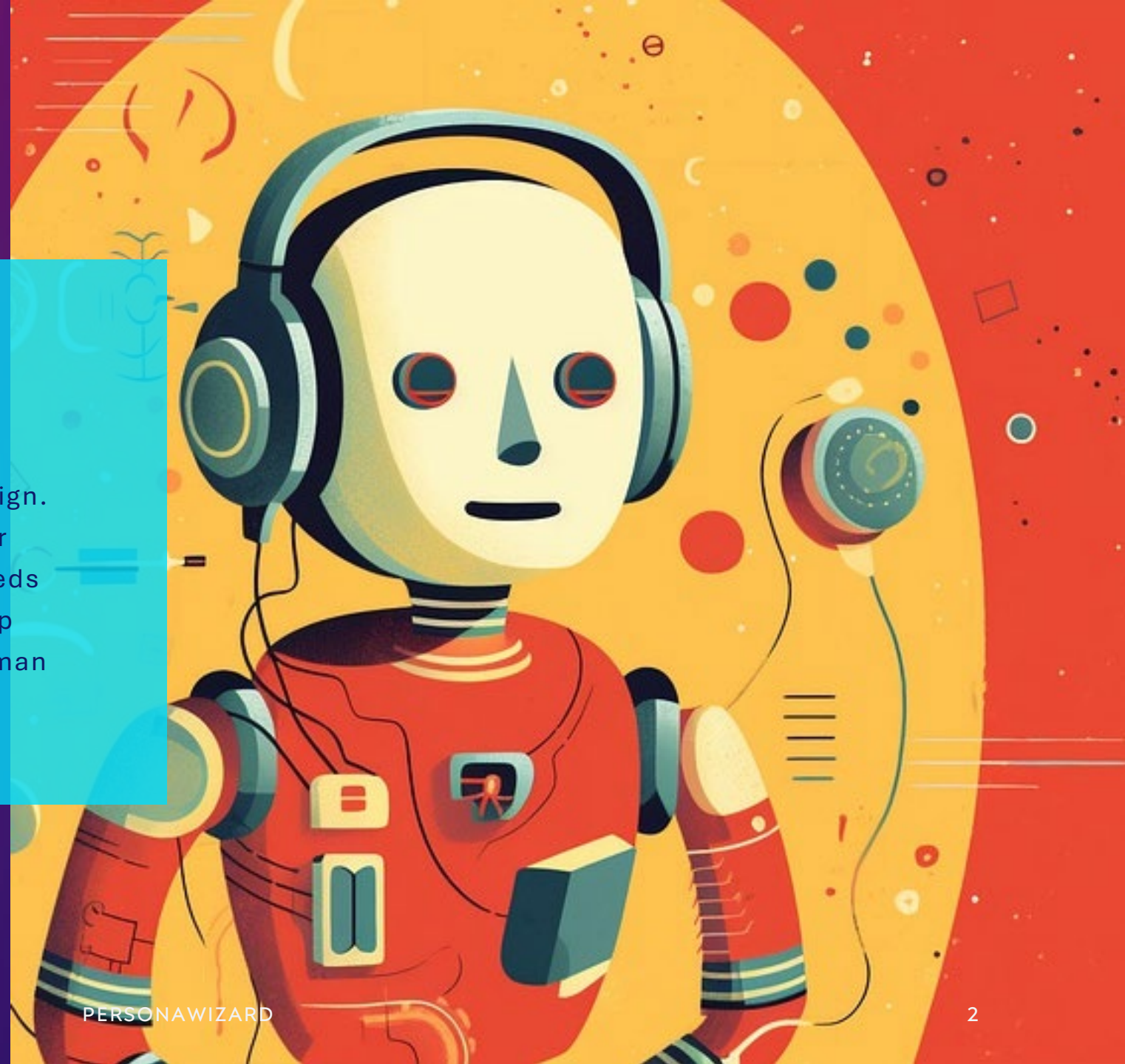
Why hello there! *pretends to yawn and stretch* My, what a beautiful day in the Hundred Acre Wood. The sun is shining, the birds are singing, and my tummy is rumbling. I think it's time for some hunny! Would you like to join me for elevenses? *pretends to hum a little tune*

PersonaWizard

Team: EM

THE PROBLEM

LLM's have a very dry and clinical nature by design. But what if you want to hook up an LLM to power your customer service chatbot? Your chatbot needs an engaging, safe and human personality to keep your customers from trying to skip right to a human agent.



SOLUTION

EXTRACT PERSONALITIES FROM LITERATURE

Our product, PersonaWizard, leverages Claude 100k to load, digest and extract character information from PDFs and formats it into JSON and PNG Character Card formats that LLMs can understand and adopt as their persona.

Claude's new 100k context window opened the door to digest huge swaths of text in minutes. We have successfully processed and extracted over 300-page PDFs in just 110 seconds.

The ability to process such a large amount of information in a short time means there is almost no limit on the character that PersonaWizard can create for your chat bot.

TECHNICAL DETAILS OVERVIEW



FRONT-END

Our user interface is designed in Flask allowing for local or web deployment



BACK-END

Our backend logic is written in Python and JS. It's lightweight and fast.



MODEL

The brains of the operation are power by Claude. Claude does the extraction and formatting of the character data



SAFETY

Because Claude is designed to be “Helpful, Honest, and Harmless” you can trust the characters created to be safe to interact with your customers

DEMO



BUSINESS MODEL

OPEN SOURCE

We currently plan on releasing PersonaWizard as an open-source tool. We believe open-source software has made AI the success it is today, and we want to continue that trend

WHAT'S NEXT?

We will be continuing this project after the end of the hackathon. Stay tuned for more news.

PersonaWizard

THANK YOU

Team: EM

Have Questions?

Contact the team lead on Discord
@Rolyat#8641