



# Contextually Enriched Translation

---

Yunus Muhaimin

# The Power of LLMs Is More Than Just for Chatting

## 1. Description

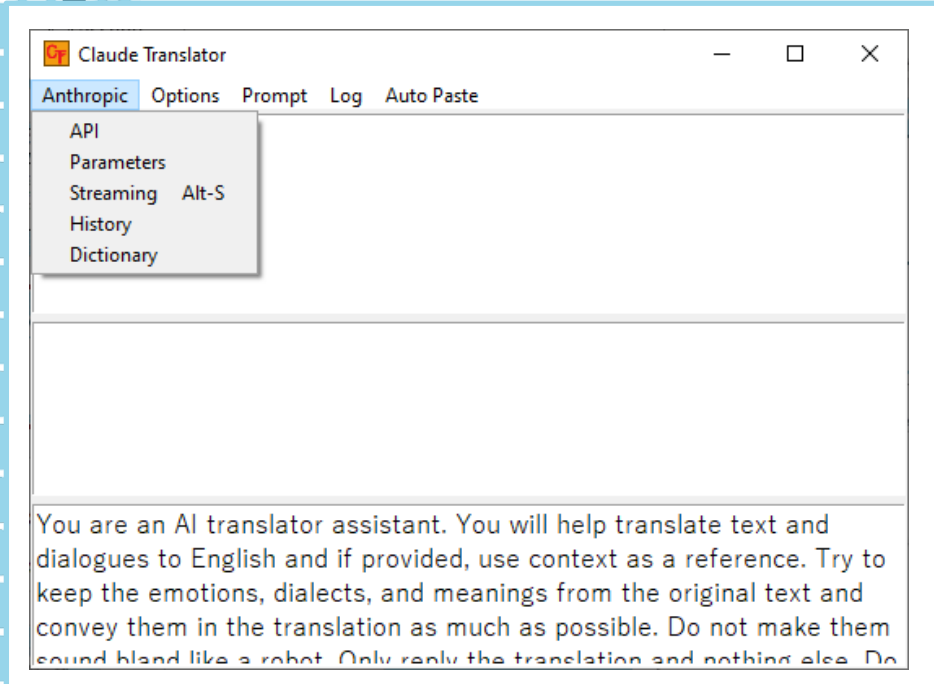
I'm creating a program that utilizes the LLM (Large Language Model) to perform text translation into English. LLMs stand out from other ordinary translation tools due to its exceptional capabilities. LLMs, with their context window and writing flow, offer a significant advantage over traditional translation machines like Google Translate and DeepL.

## 2. Key Advantages

One of the key strengths of LLMs is their ability to generate more coherent translations with enhanced contextual understanding.

Unlike conventional translation machines, which tend to get confused when fed with large amounts of text, LLMs excel at maintaining the overall context and delivering more accurate translations.

# Prototype UI





# UI Guide

01

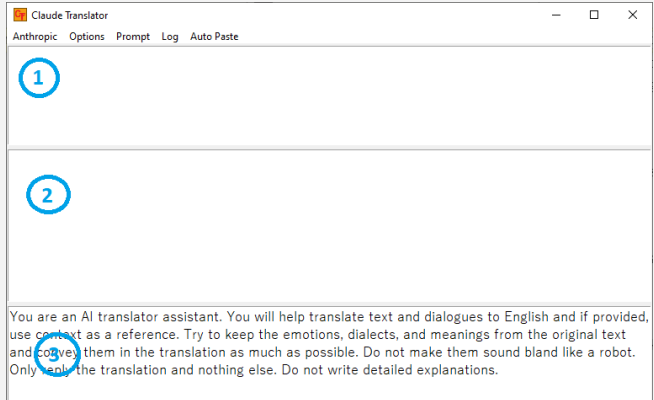
This is where you input the text that you want to translate.

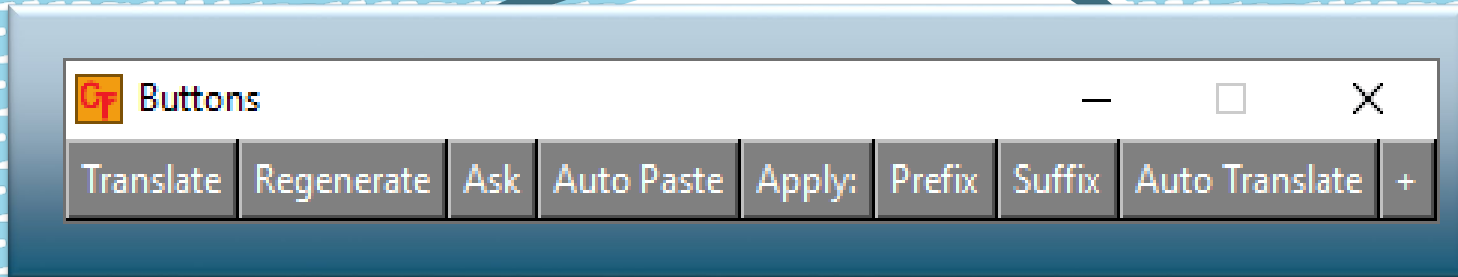
02

This is where the translations will appear.

03

This is where you want to customize the system prompt.



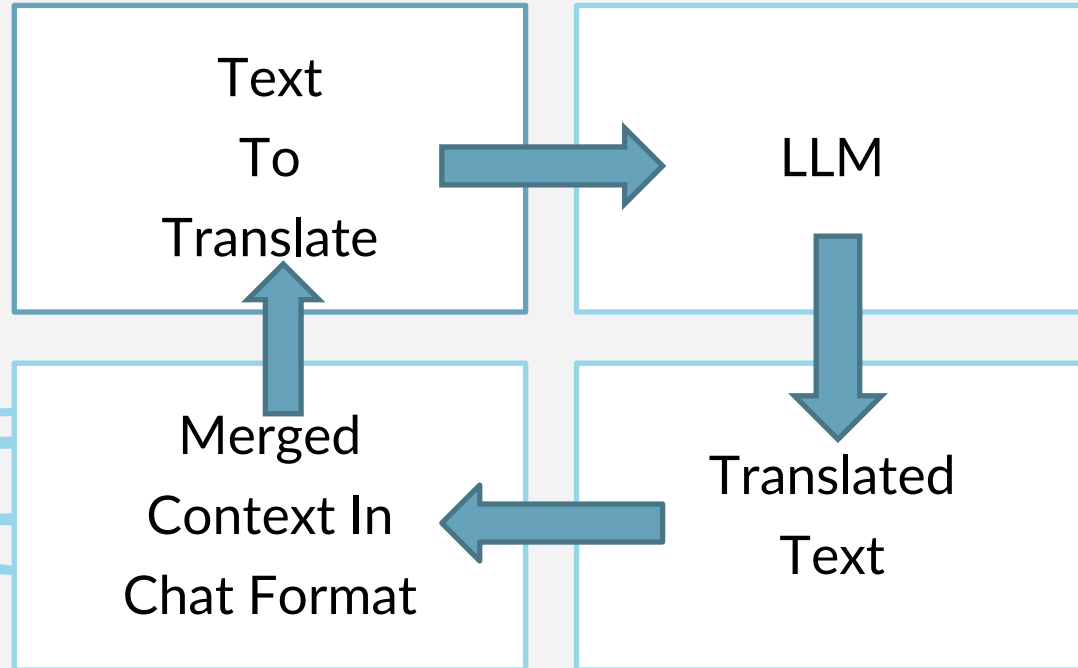


### Buttons Window

This window contains various buttons for additional features.  
Use the translate button to initiate translation.

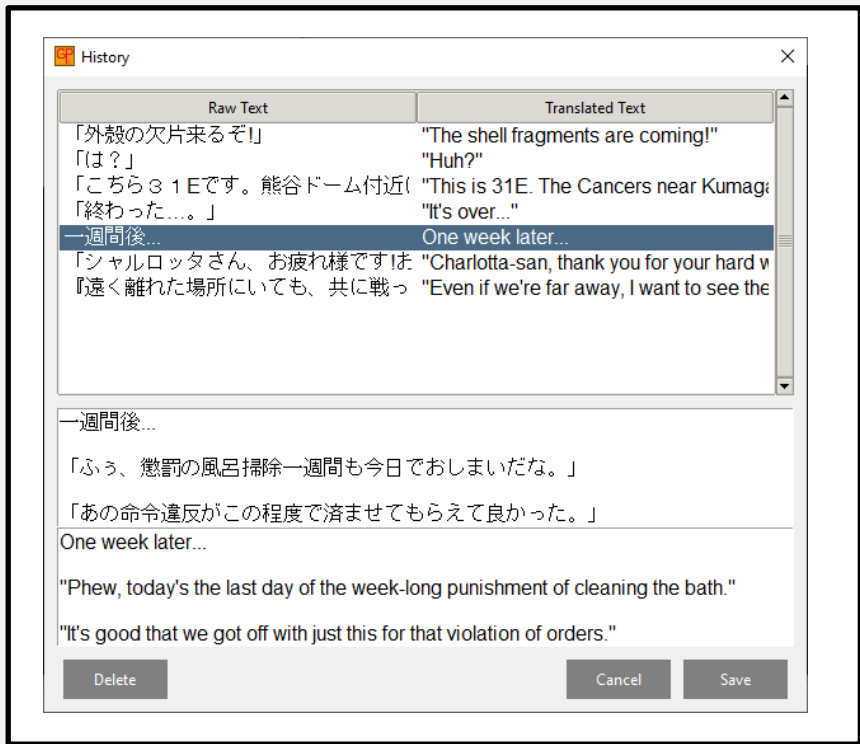
May subject to change.

Utilizing the context window of LLMs, translations will be saved and sent back along with new text to be translated. This approach differs from conventional translation machines that handle each text input independently, without considering any prior context.



# History Window

-What-

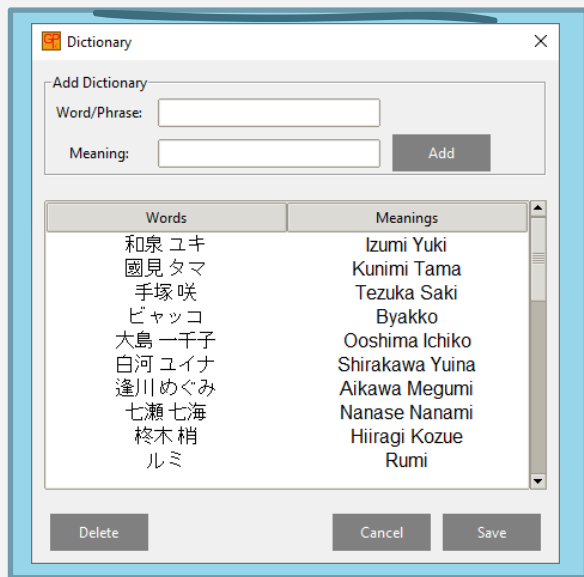


The history window displays the saved translations, which are continuously added until they reach the context size you have set. Then, older translations will be gradually removed to make room for new ones.

## Other Settings

### Dictionary

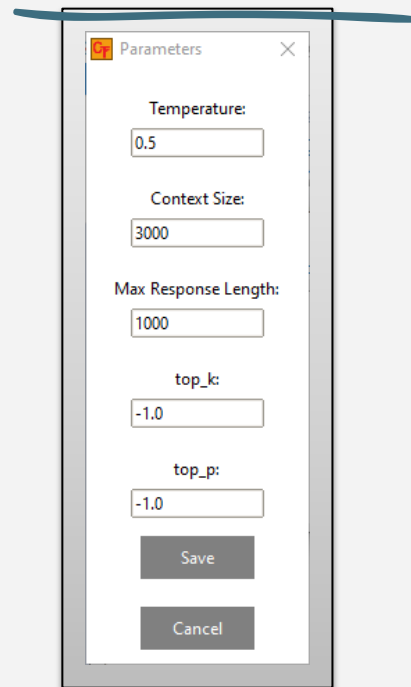
Here, you can manage and customize the terms and words used as references by the model during the translation process.



### Parameters Window

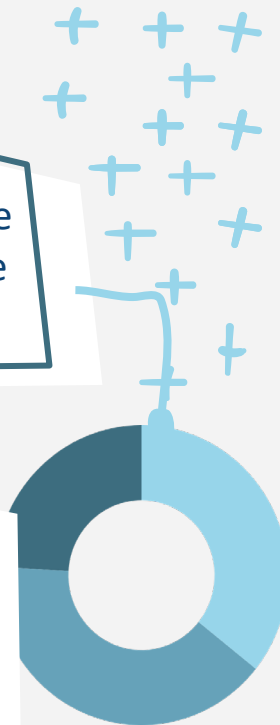
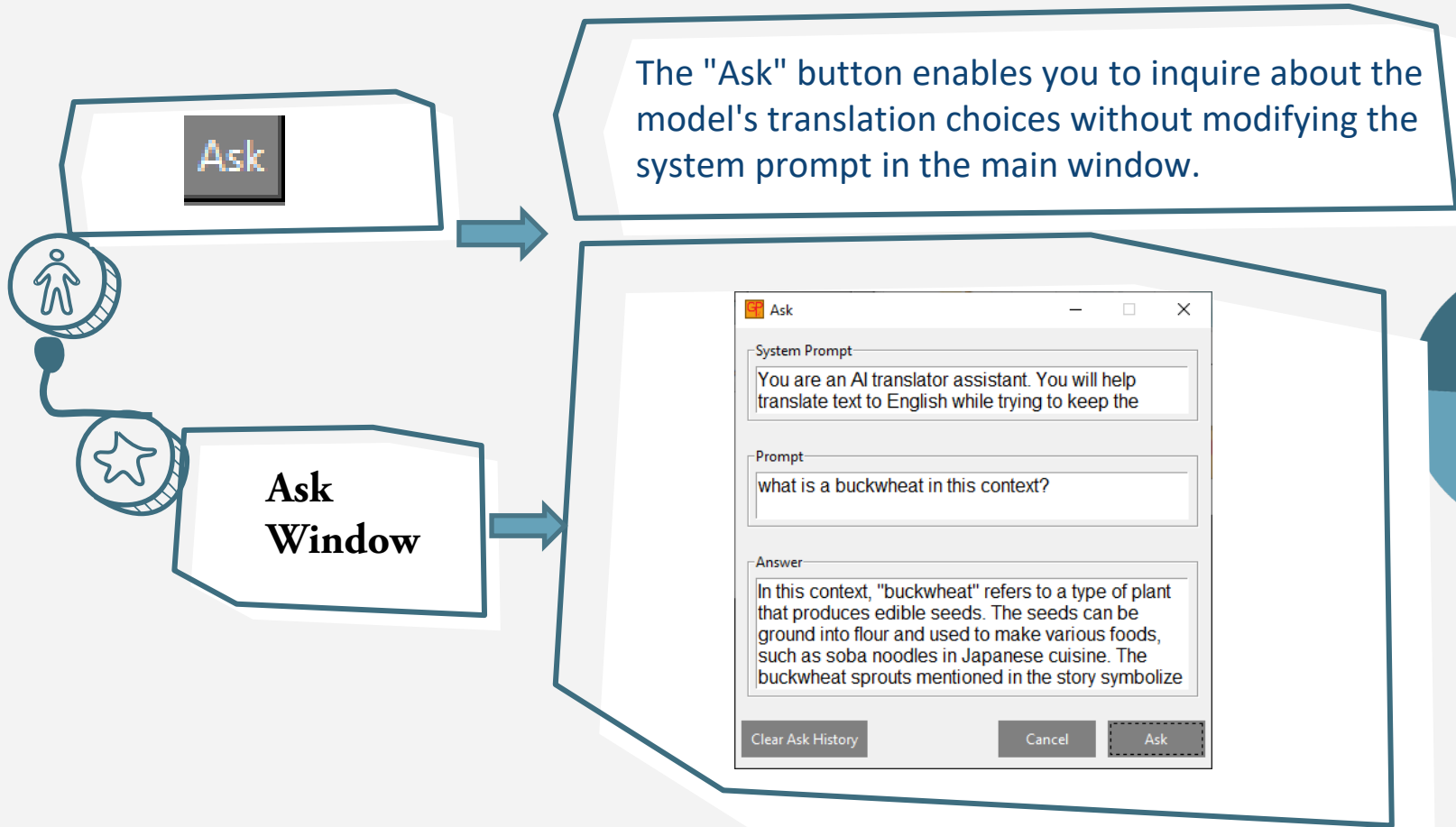
Self explanatory.

The context size is for setting the saved translation limit.





# Ask The Model for Their Choice



And that's it, I have presented to you a prototype project that utilizes the power of the LLM models.

In the future I want to turn this project into a online services like Google TL or Deepl, but I'm still a novice and only known a little python code. So this was mostly for personal use for now.

That's it for my presentation. Thanks for your attention.



# Thanks!

Do you have any questions?



CREDITS: This presentation template was created by [Slidesgo](#), including icons by [Flaticon](#), and infographics & images by [Freepik](#).

