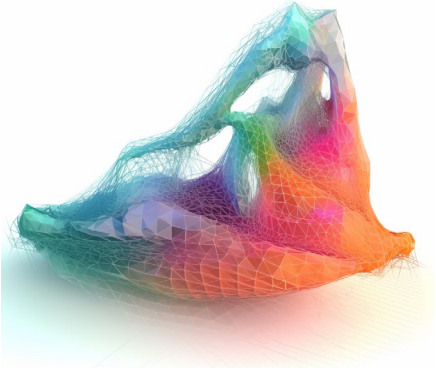


A futuristic, high-tech environment with people working at various stations and equipment. The scene is filled with complex machinery, screens, and people in a dark, industrial setting. The overall aesthetic is that of a advanced control room or a space station interior.

Exploring the Potential of Py Interpreter

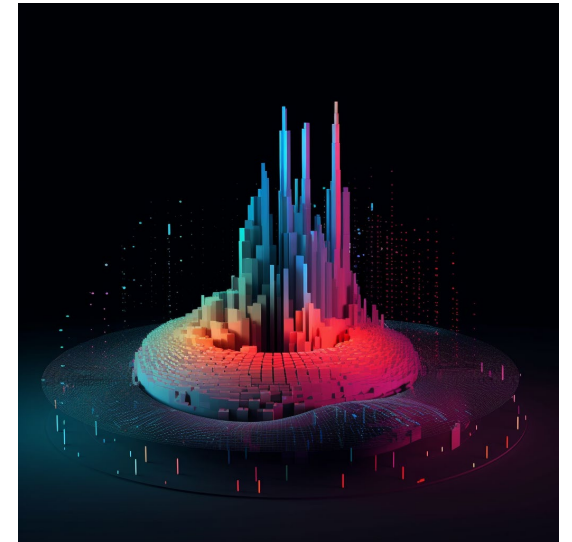
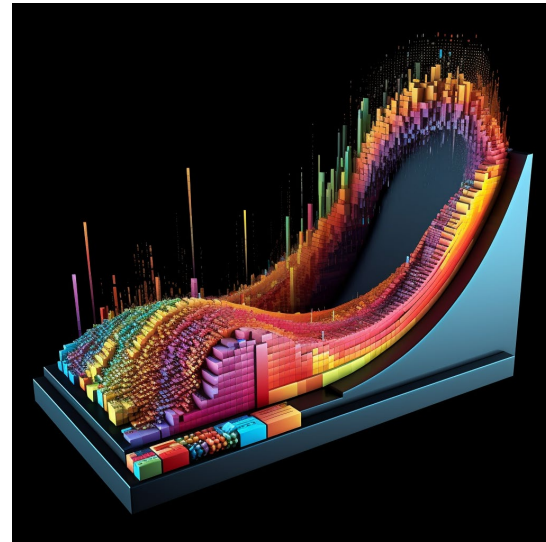
A Web-Based, API-Enabled Platform for:
AI-Generated, Accelerated Data Analysis,
Code Generation, and Statistical Insights



Py Interpreter Overview

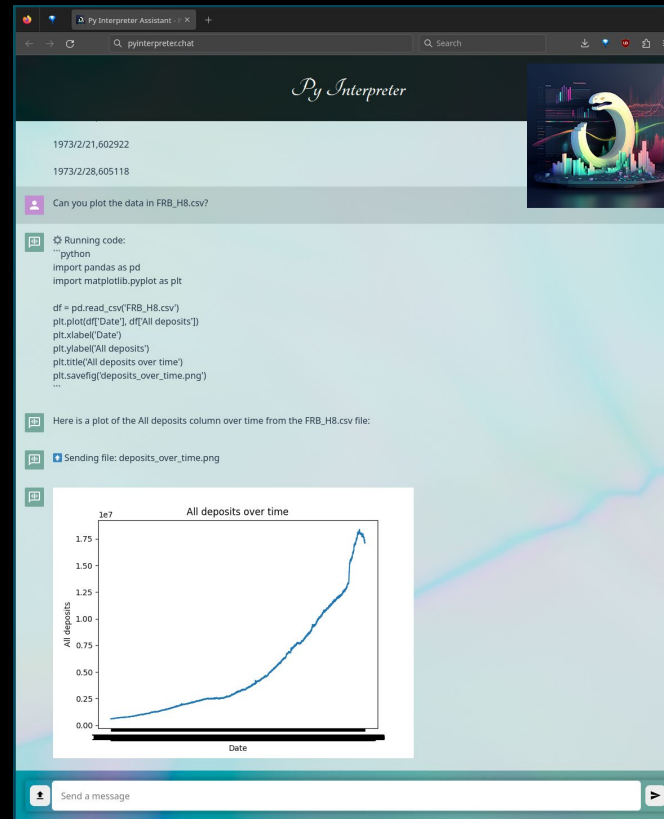


The **Py Interpreter** is a powerful platform for data analysis, allowing users to quickly and accurately process large amounts of data, with chat assistance from Claude. It is web-based and API-enabled, making it easy to integrate with other applications.



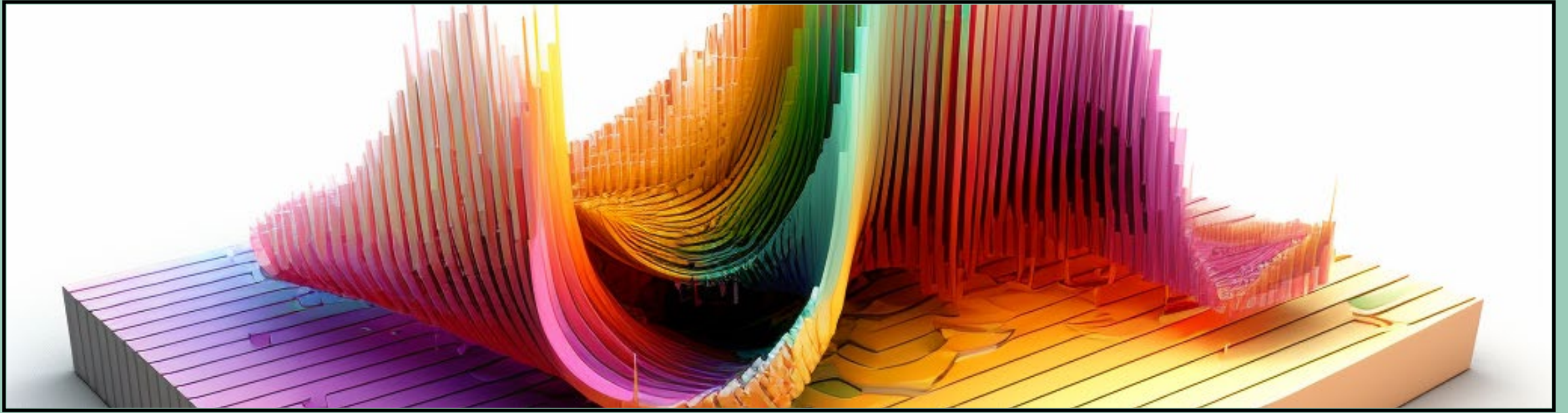
Streamlined Workflow Effects

SAVE TIME GETTING DATA INSIGHTS



STREAMLINED WORKFLOW HAS A POSITIVE EFFECT ON TIME SAVED, REDUCING COSTS, AND INCREASING EFFICIENCY

*Claude 100k after several attempts at a marketable answer



“Data analysis is the process of semantically interpreting the meaning of data.”

On-Demand Statistical Analysis

2015

Python 3.5 released,
introducing asyncio for
asynchronous I/O

2018

Amazon releases
Amazon SageMaker, a
cloud-based machine
learning platform

2023

On-Demand Mass
Statistical Analysis and
code generation becomes
available with Py
Interpreter

2017

Google releases
TensorFlow, an open
source machine
learning library

2021

Anthropic founded,
specializing in general
AI with responsible AI
ethos.

With **Claude's 100,000** tokens, we get a rich context to work with.

We combine that with a **hosted code-running** suite.

We can write and run programs with human guidance. The result is fast **insights**.

Team Members



AUTOMETA
Alignment Lab AI



ENTROPI
Vital Time



SHROOMINIC
Full-Stack

AI-Optimized Visualizations



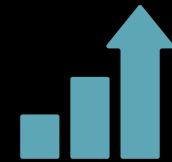
AI-OPTIMIZED VISUALIZATIONS

AI-generated visualizations can help to quickly and accurately interpret data, allowing for faster and more efficient analysis.



API-ENABLED PLATFORM

The PY Interpreter platform is API-enabled, allowing for easy integration with other applications.



ACCELERATED DATA ANALYSIS

The platform enables accelerated data analysis, allowing for faster insights and decision-making.

AI-OPTIMIZED VISUALIZATIONS, API-ENABLED PLATFORM, AND ACCELERATED DATA ANALYSIS ARE ALL KEY FEATURES OF THE PY INTERPRETER PLATFORM, MAKING IT AN IDEAL CHOICE FOR WEB-BASED, AI-GENERATED DATA ANALYSIS.

Cost-Effective Advantages



REDUCED LABOR COSTS

Py Interpreter eliminates the need for manual data entry and analysis, reducing labor costs.



INCREASED EFFICIENCY

Py Interpreter's API-enabled platform allows for faster data analysis, increasing efficiency.



IMPROVED ACCURACY

AI-generated data analysis ensures accuracy and precision, improving overall results.

PY INTERPRETER OFFERS A COST-EFFECTIVE SOLUTION FOR ACCELERATED DATA ANALYSIS WITH IMPROVED ACCURACY AND EFFICIENCY.

Innovative Programming Features



HIGH-SPEED PROCESSING

Py Interpreter enables fast data analysis with its AI-generated algorithms.



SECURE DATA HANDLING

Py Interpreter securely handles data with its ephemeral, API-enabled platform.



USER-FRIENDLY INTERFACE

Py Interpreter offers an intuitive natural language interface, with easy controls.

PY INTERPRETER IS THE PERFECT PLATFORM FOR ACCELERATED ANALYSIS, OFFERING HIGH-SPEED PROCESSING, SECURE DATA HANDLING, AND A USER-FRIENDLY INTERFACE.