



GITHELPERS

# Summar.AI

Time To **Git** Into Open Source!

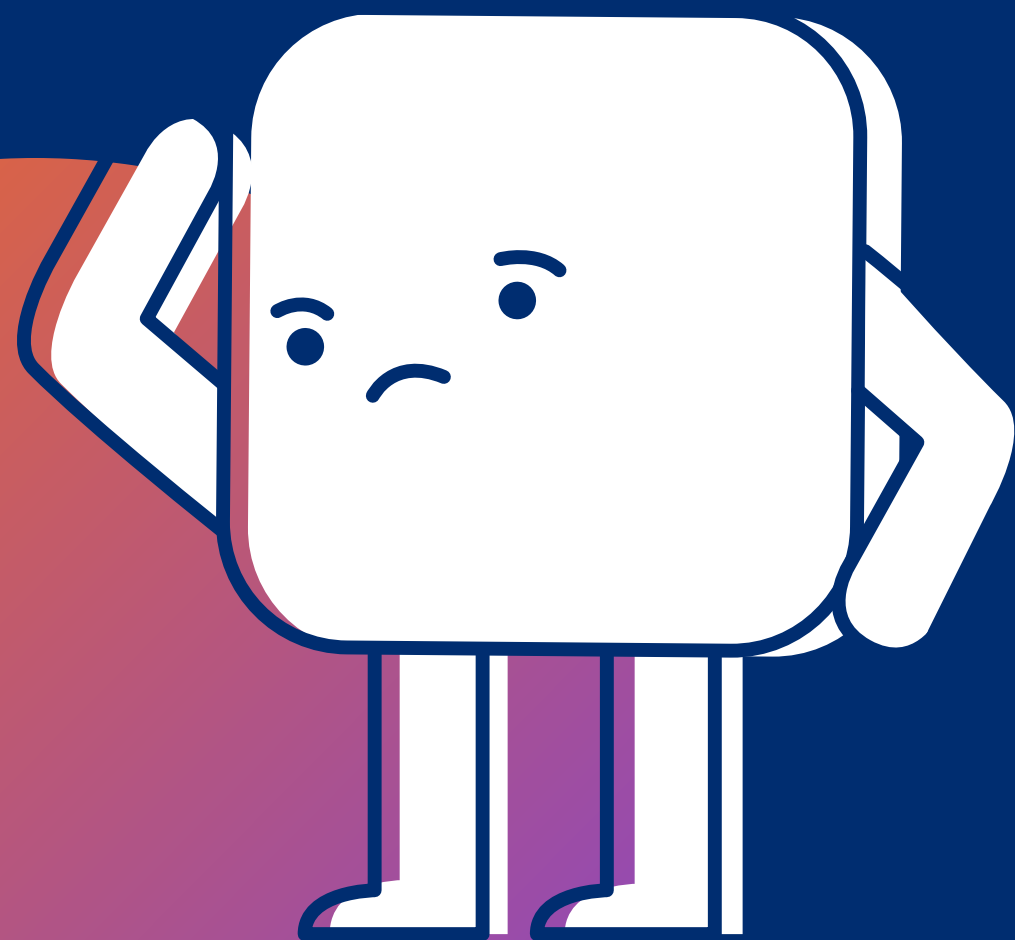


PLUG INTO AI WITH AI21



GITHELPERS

# Our Problem Space



Contributing to a GitHub repository can be overwhelming!

Those new to the world of open source struggle to understand where, how and why they should contribute, according to VMWare.

Individual contributions to open source provide users a platform to turn their ideas into reality, which is what we want to make easier.





GITHELPERS

# Summar.AI

Summar.AI is a Chrome extension that streamlines the contribution process on GitHub by offering a comprehensive overview, interactive guidance, and focused areas for developers to make a positive impact.

With its user-friendly interface and powerful features, Summar.AI empowers developers to contribute effectively and fosters collaboration within the open-source community.





# Our Contribution

01

## Summary

We provide a summary about the repository that the user is currently browsing, offering a concise overview that helps developers quickly grasp the key aspects of the project.

02

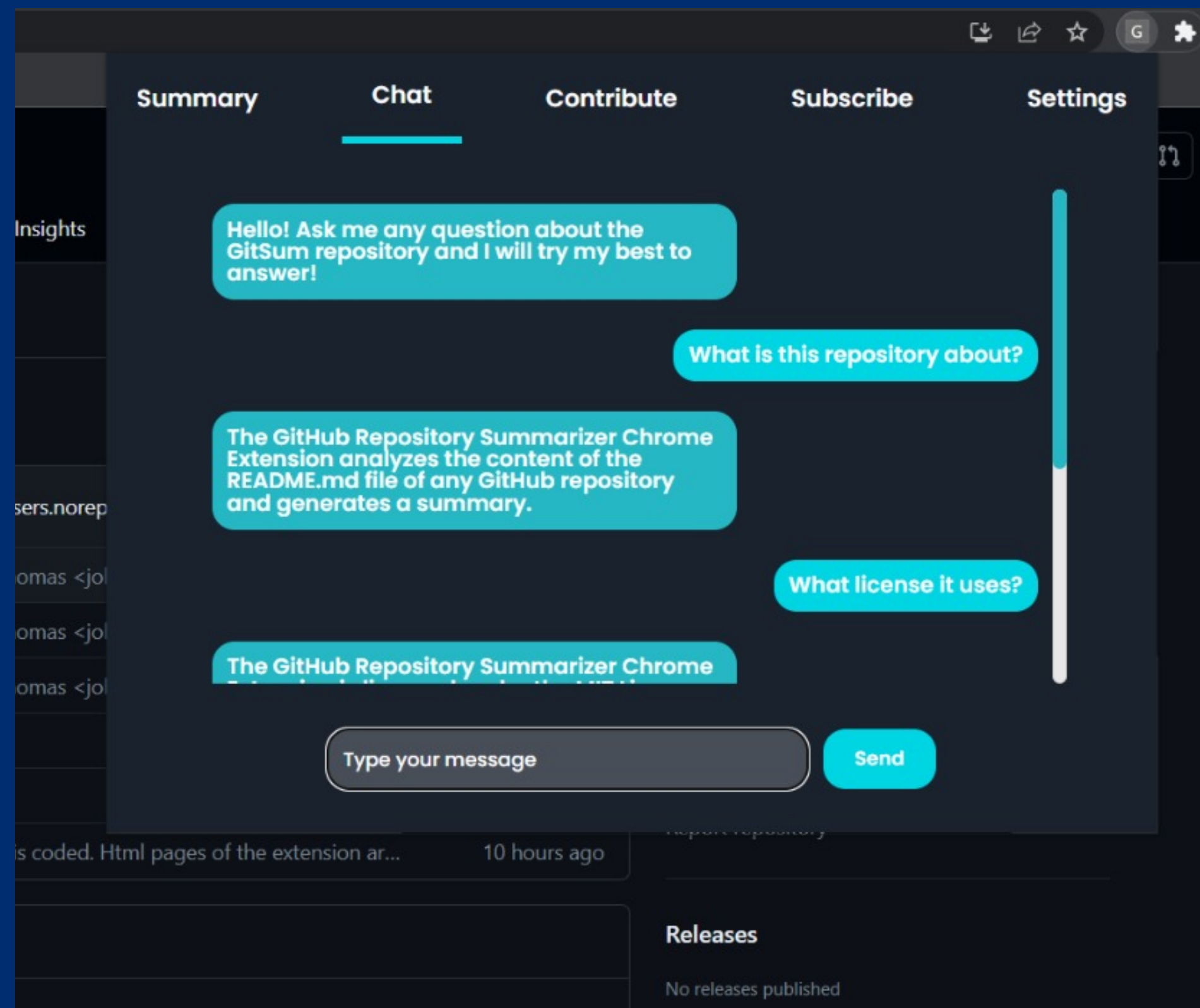
## Chat

Our integrated chatbot allows users to interact and ask questions about the repository directly within the extension.

03

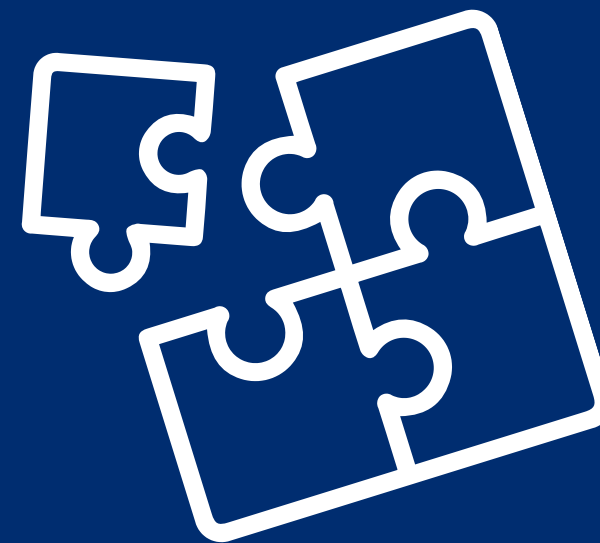
## Contribute

The contribute feature gives you areas of the repository that need contribution, along with a description.





GITHELPERS



# Implementation

## Summarizer

The comprehensive summaries that Summar.AI offers, give contributors a quick overview of the project's purpose and is **powered by AI21's Task Specific Summary API.**

## Chat Feature

Our knowledgeable chatbot that allows developers to further their understanding of a repository is **implemented using AI21's QnA Task Specific API.**

## Contribution Feature

Specific areas within the repository that require contributions are identified using **GitHub's API** and **uses the Jurassic-2-Ultra model to suggest how users might fix these issues.**







# Subscription Model

Summary   Chat   Contribute   **Subscribe**   Settings

---

## 8/15 Daily Repository Summarizing Limit

Subscribe Now For Membership:  
\$10 Per Month

[Subscribe Now](#)

*Our extension's features are free to use for up to 15 repositories per day, after which a subscription is needed.*



# Future Plans

## Enhanced Functionality

With a granular file-level communication feature, developers can address issues directly, allowing for a more effective contribution process.

## Personalisation

With personalized contribution suggestions, developers can make meaningful and impactful contributions that align with their capabilities and interests.

