

# LABLAB.AI PROJECT



# INTRODUCTION

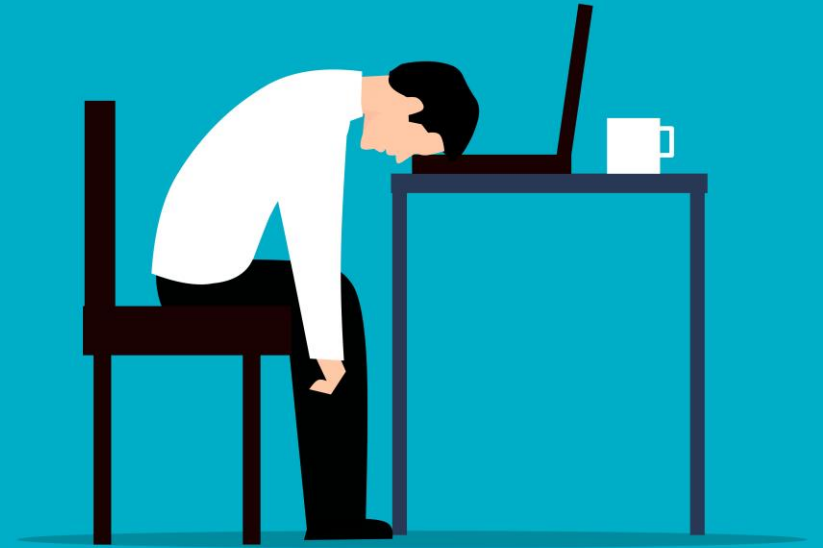
We have created an amazing app **BotLangua**.

BotLangua: A user-friendly and innovative web application.

Developed to provide a seamless and interactive platform.

Aims to cater to the needs of language learners, travellers, and those seeking efficient language solutions.

Main features: Language translation, Chatbot interaction, Text-to-Speech (TTS)





## Overview of BotLangua

- **Text-to-Speech (TTS):** Converts written text into spoken words.
- **Multiple Languages:** Supports seamless language translation for effective communication.
- **Intelligent Chatbot:** Engages in interactive conversations for instant assistance.
- **Personalization:** Users can customize their language preferences.



## MODULE 2

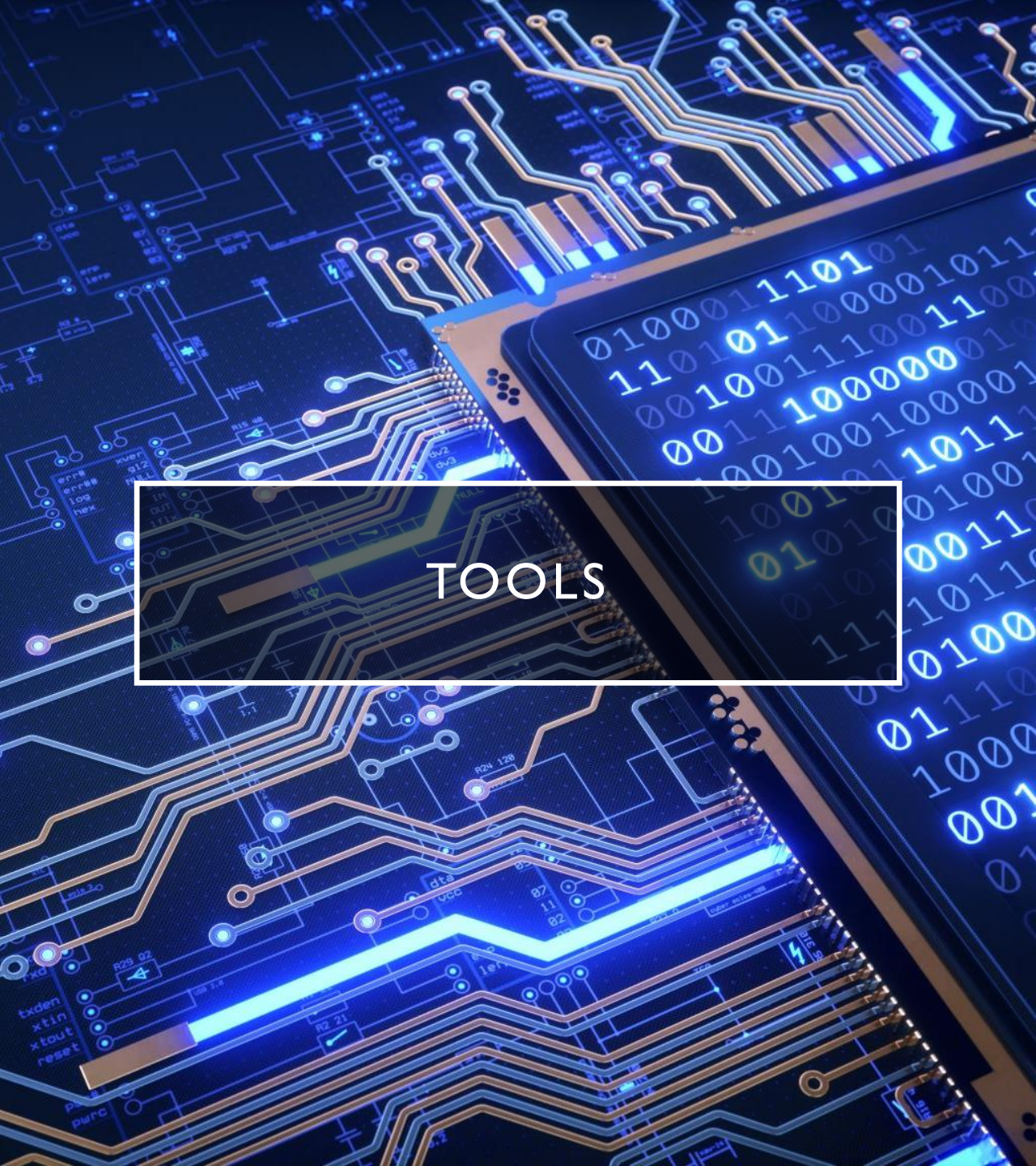
### • Main Features

1. Text-to-Speech (TTS) Demo: Show a screenshot of the TTS feature and its controls.
2. Language Translation: Highlight the ease of translating between multiple languages.
3. Intelligent Chatbot: Illustrate how the chatbot offers quick and accurate responses.

# DEMONSTRATION

- BotLangua is a user-friendly web application that offers a range of powerful functionalities to enhance user experience and streamline tasks. Firstly, it features a convenient Text-to-Speech function that converts written text into spoken words, providing accessibility to visually impaired users and allowing anyone to listen to content on the go.
- Secondly, the app supports multiple languages, enabling seamless language translation for effective communication across linguistic barriers. Additionally, an intelligent chatbot engages in interactive conversations, offering quick and accurate responses, making it a valuable tool for instant assistance.
- Lastly, users can personalize their language preferences, creating a tailored experience that remembers settings for future use. Together, these functionalities ensure an intuitive and user-friendly platform, catering to language learners, travellers, and anyone seeking efficient solutions for language-related tasks. Whether you're an everyday individual looking to engage in lively conversations, language learners or travellers, our app is designed to meet your needs and preferences.





## TOOLS

- **Languages:**  
HTML, CSS , Java Script.
- **Frameworks:**  
Express, NodeJS, ReactJS.
- **API:**  
Lang Chain, OpenAI,  
Responsive Voice.



## BENEFITS IN REAL WORLD PROBLEM

- 1. Language Barriers:** In a globalized world, language barriers can hinder effective communication and collaboration. BotLangua's language translation feature helps break down these barriers by enabling seamless and accurate translation between multiple languages. This fosters better understanding and interaction among individuals from diverse linguistic backgrounds.
- 2. Accessibility:** People with visual impairments often face challenges in accessing written content online. BotLangua's Text-to-Speech (TTS) functionality provides an audio representation of text, making digital content accessible to visually impaired users. This feature promotes inclusivity and ensures that everyone can participate in the digital space.





## BENEFITS IN REAL WORLD PROBLEM

1. **Language Learning:** Language learners often need practice and exposure to real-life conversations. BotLangua's interactive Chatbot facilitates language learning by providing opportunities for learners to engage in conversational exercises, improving their language proficiency in a practical **Efficient Communication:** Businesses and individuals dealing with international clients or partners face challenges in effectively communicating across language barriers. BotLangua's language translation and Chatbot features enhance communication efficiency, enabling seamless interactions and fostering stronger relationships.

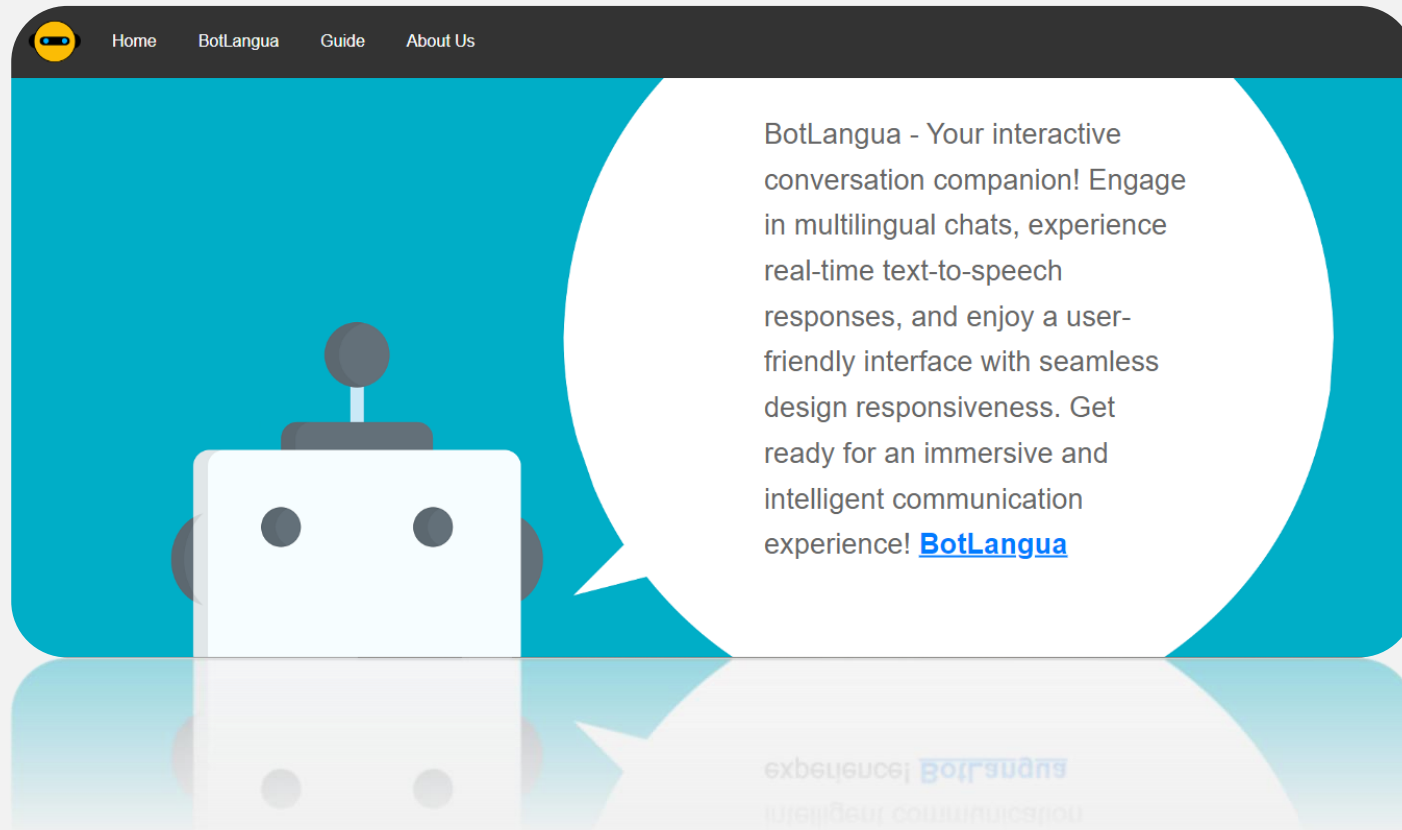




## BENEFITS IN REAL WORLD PROBLEM

1. **Digital Innovation:** As technology continues to evolve, innovative web applications like BotLangua demonstrate the power of technology in solving real-world problems. It showcases how advancements in natural language processing, machine learning, and user experience design can be harnessed to create user-friendly and impactful solutions.

# BOTLANGUA INTERFACE



# BOTLANGUA

## BotLangua

Introducing BotLangua with Text-to-Speech allows you to engage in conversations with an intelligent ChatBot. Enter your input text, choose your preferred input and output languages, and witness the ChatBot's quick and accurate responses. Utilize the built-in Text-to-Speech feature to listen to the ChatBot's answers in your chosen language. **Start interacting with the ChatBot now and experience seamless communication!**

Enter your Text

Input Language

English

Output Language

English

Send

## BotLangua

Introducing BotLangua with Text-to-Speech allows you to engage in conversations with an intelligent ChatBot. Enter your input text, choose your preferred input and output languages, and witness the ChatBot's quick and accurate responses. Utilize the built-in Text-to-Speech feature to listen to the ChatBot's answers in your chosen language. **Start interacting with the ChatBot now and experience seamless communication!**

Hello! How are you?

Input Language

English

Output Language

English

Send



I'm doing well too, thank you for asking.

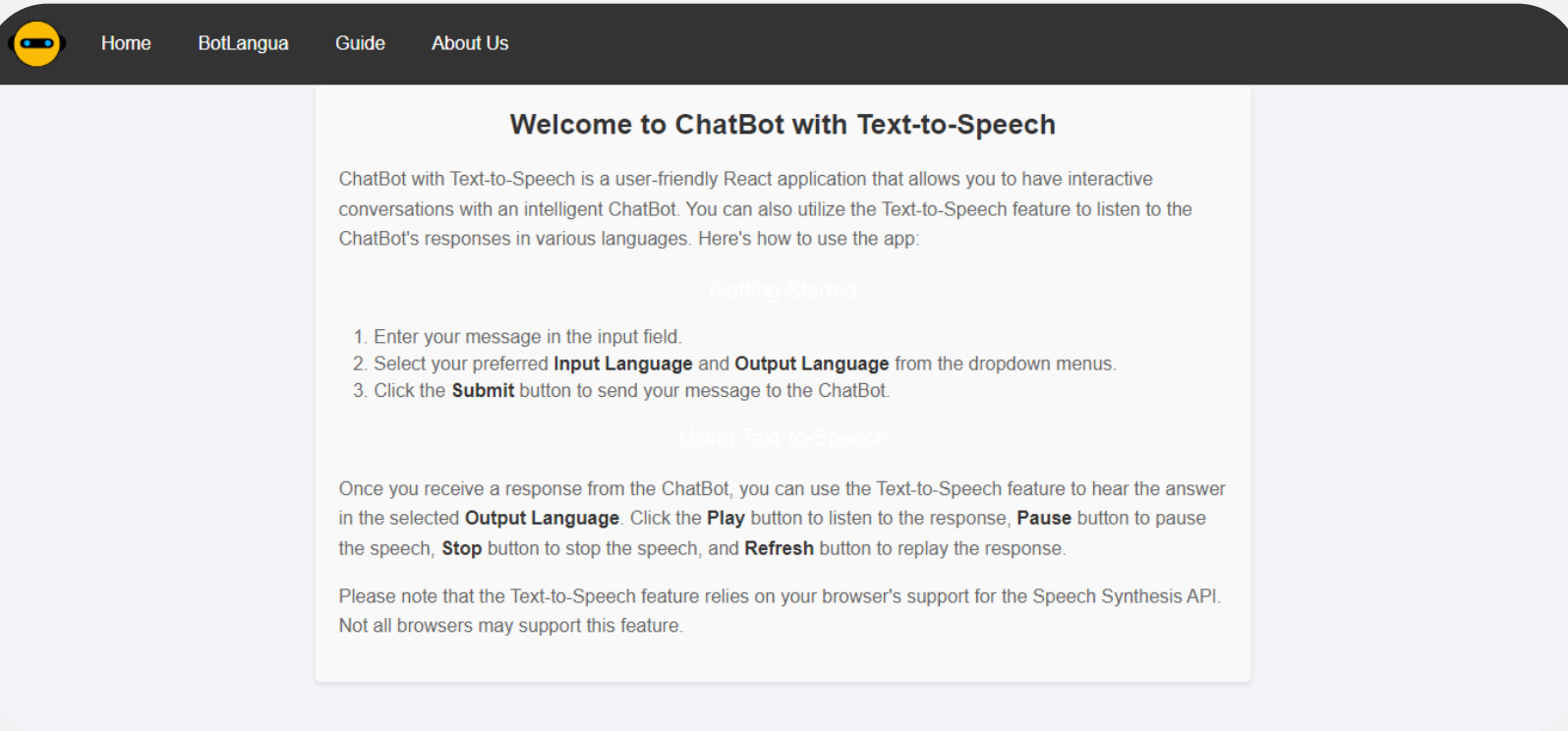
Play

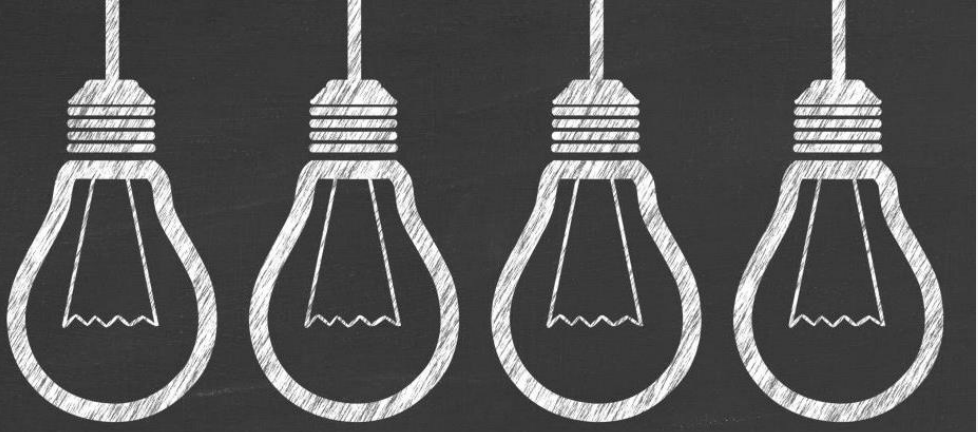
Pause

Stop



# BOTLANGUA (GUIDE)





## TEAM MEMBERS

- **Mohsan Ali:** Developed, Designed and Deployed the project using all the languages, frameworks and API's. Developing, testing, finalizing and overall designing of project included in Mohsan's part.
- **Rabeet UI Jash:** Provided Idea about application and helped in designing.
- **Fakhra Riaz:** Supervised the team on building the AI startup project.



THANK  
YOU