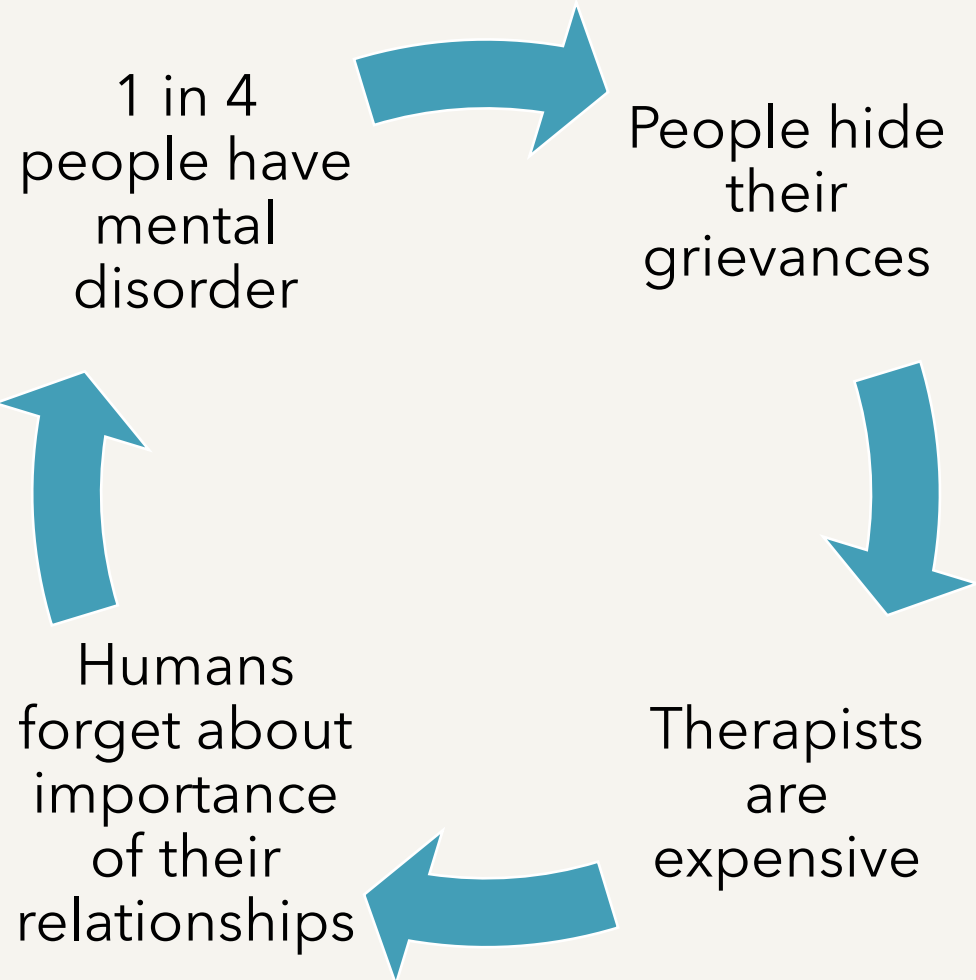


MentalSync

AI relationship manager

Saves you 90% of your time in any interactions

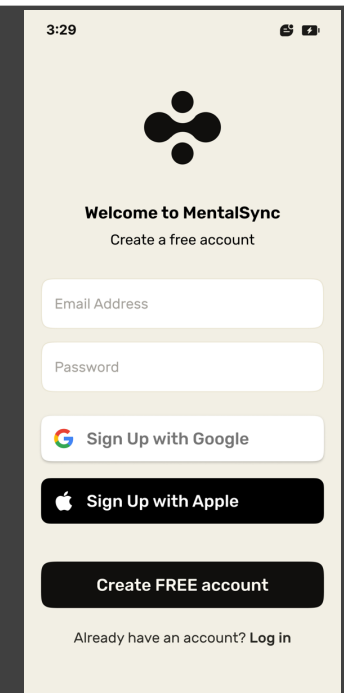
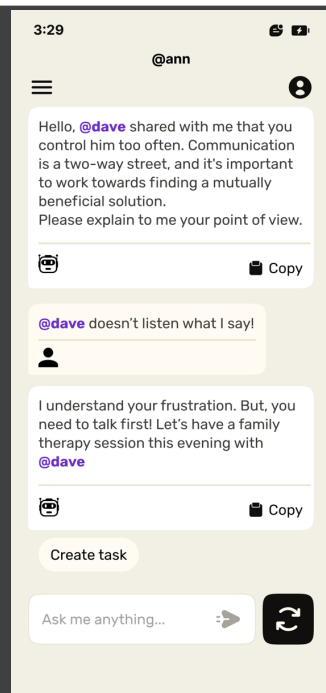
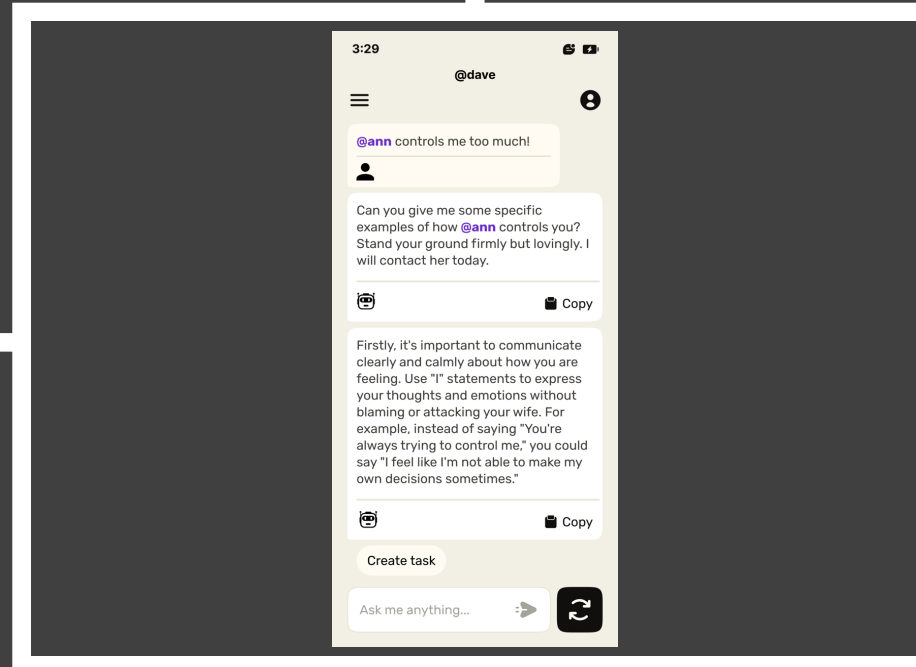
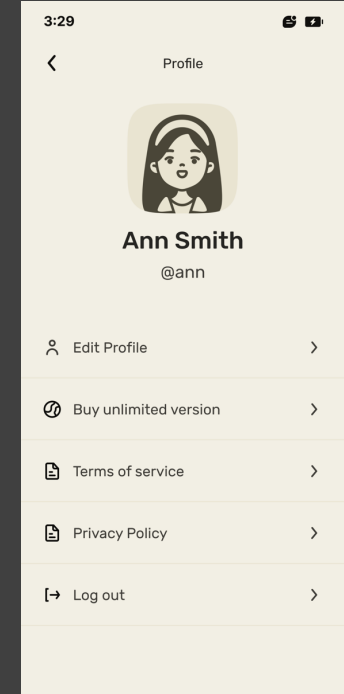
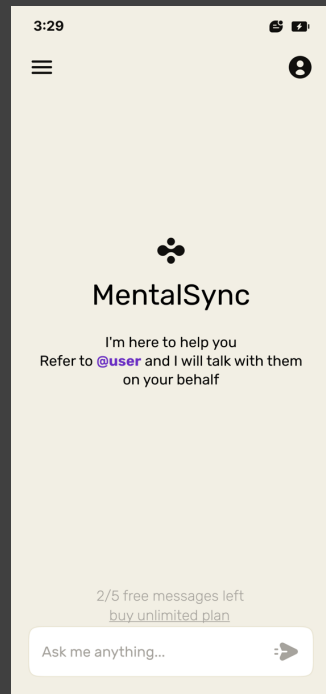
The problem



Solution

- AI - personal relationship manager
- MentalSync is ready to help 24/7
- Supports voice and text messages
- Trained on psychological materials
- Guides user to the therapists
- Connects people together





mentalsync.net

Market Size

- TAM: over 2B people
- SAM: over 600M people
- SOM: over 100M people

- **Target:** Private Clinics, Home care, B2C/B2B
- Location: US/EU/WORLD



Business Model



SUBSCRIPTION TO
THE SAAS



PRIVATE SESSION
WITH THERAPIST



INSURANCE
REIMBURSEMENT

Traction



NUMBER OF
REGISTERED
USERS



NUMBER OF
ACTIVE USERS



SESSION
BOOKINGS



REVENUE



CUSTOMER
SATISFACTION



Milestones

- Reach 100,000 users
- Expand globally
- Increase customer engagement
- Release mobile apps
- Improve therapist matching

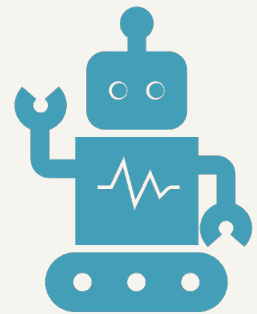
Team



Timur Lazizov
FOUNDER & CEO



Yakov Keselman
FOUNDER & CTO



Artificial Intelligence
CUSTOM LLM