

Team AI Agents MindfulAI

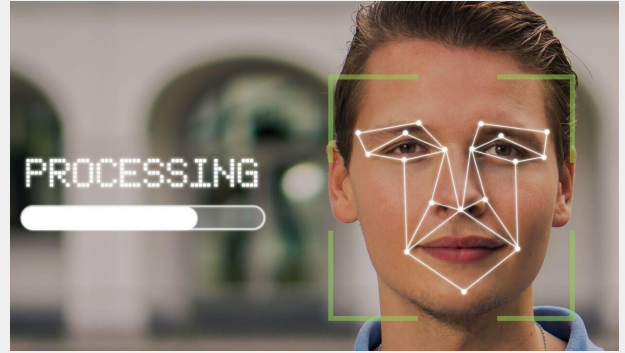
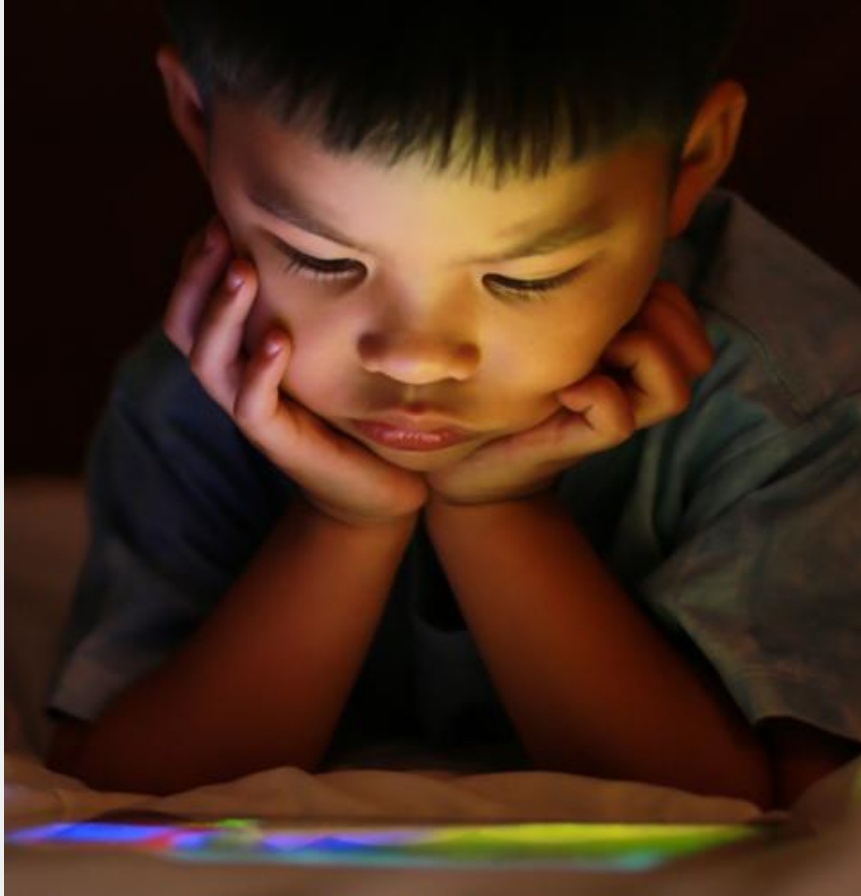
Revolutionizing Mental Wellness and Eye Health with AI

Team Leader: Dhairya Shah

Team members: Homan | Timothe | Dhairya | Faran | Abdullah | Anubhab

The Problem

AI therapist with **mood recognition** and **eye care** functionalities directly addresses the pressing challenges of modern life, catering to diverse user groups with tailored assistance for **emotional support**, **stress management**, **eyes health**, and overall **well-being enhancement**.



< Health Concerns in Modern Life we live / >

COVID-19 Pandemic

Pre-Pandemic Usage

- Survey conducted by the Pew Research Center in 2018 found that 81% of U.S. teens aged 13 to 17 owned a smartphone with 45% online constancy.

Post-Pandemic Surge

- The COVID-19 pandemic accelerated the adoption of technology for remote learning, leisure, and communication.
- According to a report by Common Sense Media in 2021, **82%** of U.S. kids aged 2 to 18 now own a smartphone, **up from 53%** in 2015.
- *With the average teen **spending ~7 hours and 22 minutes** on their phone per day.*

< Health Concerns in Modern Life we live / >

**Mood
Recognition**

Healthcare

Education

Workspace

**Public
Safety**

< Health Concerns in Modern Life we live / >

**Mood
Recognition**

Emotional
Support

Convenience
Accessibility

Angry: 0.00
Disgust: 0.00
Fear: 0.00
Happy: 0.00
Neutral: 0.99
Sad: 0.01
Surprise: 0.00

< MindfulAI - AI Therapist Lean Canvas / >

PROBLEM	SOLUTION	UNIQUE VALUE PROPOSITION	UNFAIR ADVANTAGE
<p>1. Digital Eye Strain and Discomfort</p> <p>2. Difficulty in managing work-life balance, long hours on screen and working with screens.</p> <p>Existing Alternatives</p> <ul style="list-style-type: none"> * Eye checkups and therapy sessions which can be expensive. * Waiting to get appointments for doctors and specialists is tedious and time consuming 	<p>1. A comprehensive platform that allows to track eye health and mental health real-time using webcam</p> <p>2. EASY-TO-USE, educates and suggests recommendations for eyes and moods</p> <p>* Incorporate a "AI Therapist" feature to help users get feedback and suggestion from AI.</p>	<p>"Discover Mental Care and Eye Care with Webcam: Real time tracking of your moods and eye health"</p> <p>HIGH-LEVEL CONCEPT:</p> <p>COMPREHENSIVE PLATFORM THAT OFFERS MENTAL HEALTH WELLNESS AND EYE HEALTH</p>	<ul style="list-style-type: none"> ● Seamless Integration of Services ● AI-Driven Personalization ● Real-Time Interventions ● Educational Content <p><i>Exclusive partnerships with local health centres, mental wellbeing centres and government hospitals, ensuring access to good dataset of patients.</i></p> <p><i>A vast database of patients, models trained for eye care and tracking moods for mental health, we have a lot of social good and wellness to contribute. An app for people by innovators.</i></p>
	<p>KEY METRICS</p>		<p>CHANNELS</p>
	<ol style="list-style-type: none"> 1. N. Downloads 2. Active Users 3. User Engagement 4. Reduction of Eye and Mental health issues Reported from Users 	<p>Inbound: App Store Optimization (ASO), social media marketing, content marketing, wellness blogs.</p> <p>Outbound: Collaborations with government healthcare centers, public and private clinics, and targeted online ads.</p>	

Business Plan & Go-to-market Strategy

Go-to-market Strategy & Business Plan

- **Freemium Model:** *starting with basic features then earning money by Premium features*

Market Size

according to a report by MarketsandMarkets the global market for AI-powered mental health solutions is expected to reach **\$2.8 billion by 2026**, from **\$0.8 billion in 2021**. This growth is being driven by the increasing prevalence of mental health conditions, the rising demand for personalized and affordable mental health care, and the growing adoption of AI technologies.

The Project Demo

Here are few screenshots of our project, showcasing the Eye care and Mental Wellness features of our project



AI Therapist tracking real time mood using webcam and showing server response using Autonomous Agent deployed on AWS and built using SuperAGI



Eye care AI Autonomous Agent deployed on AWS and built using SuperAGI tracking blinks real-time from webcam

Project Video

— — —

Youtube Link - https://youtu.be/2w_Zcp3dwUE

